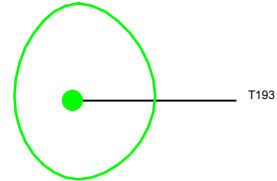
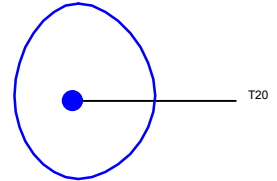


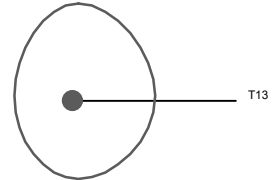
NOTES



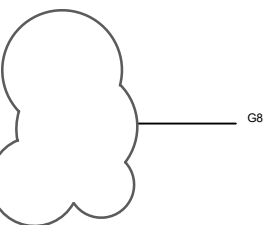
CATEGORY A (GREEN) TREES
Trees of high quality with an estimated remaining life expectancy of at least 40 years



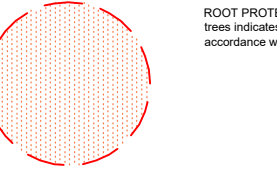
CATEGORY B (BLUE) TREES
Trees of moderate quality with an estimated remaining life expectancy of at least 20 years



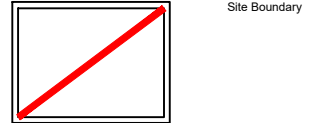
CATEGORY C (GREY) TREES
Trees of low quality with an estimated remaining life expectancy of at least 10 years, or young trees with a stem diameter below 150 mm



Refers to groups of trees



ROOT PROTECTION ZONE: Area of hatching around protected trees indicates the minimum Root Protection Area required in accordance with BB Trees Ltd Pre Development Tree Survey.



Site Boundary

C Site renamed, boundary and tree survey updated 28-07-21 JG
B Title block updated 31-10-19 MAB
A Issued for planning 12-08-19 MAB
REV NOTE DATE AUTH

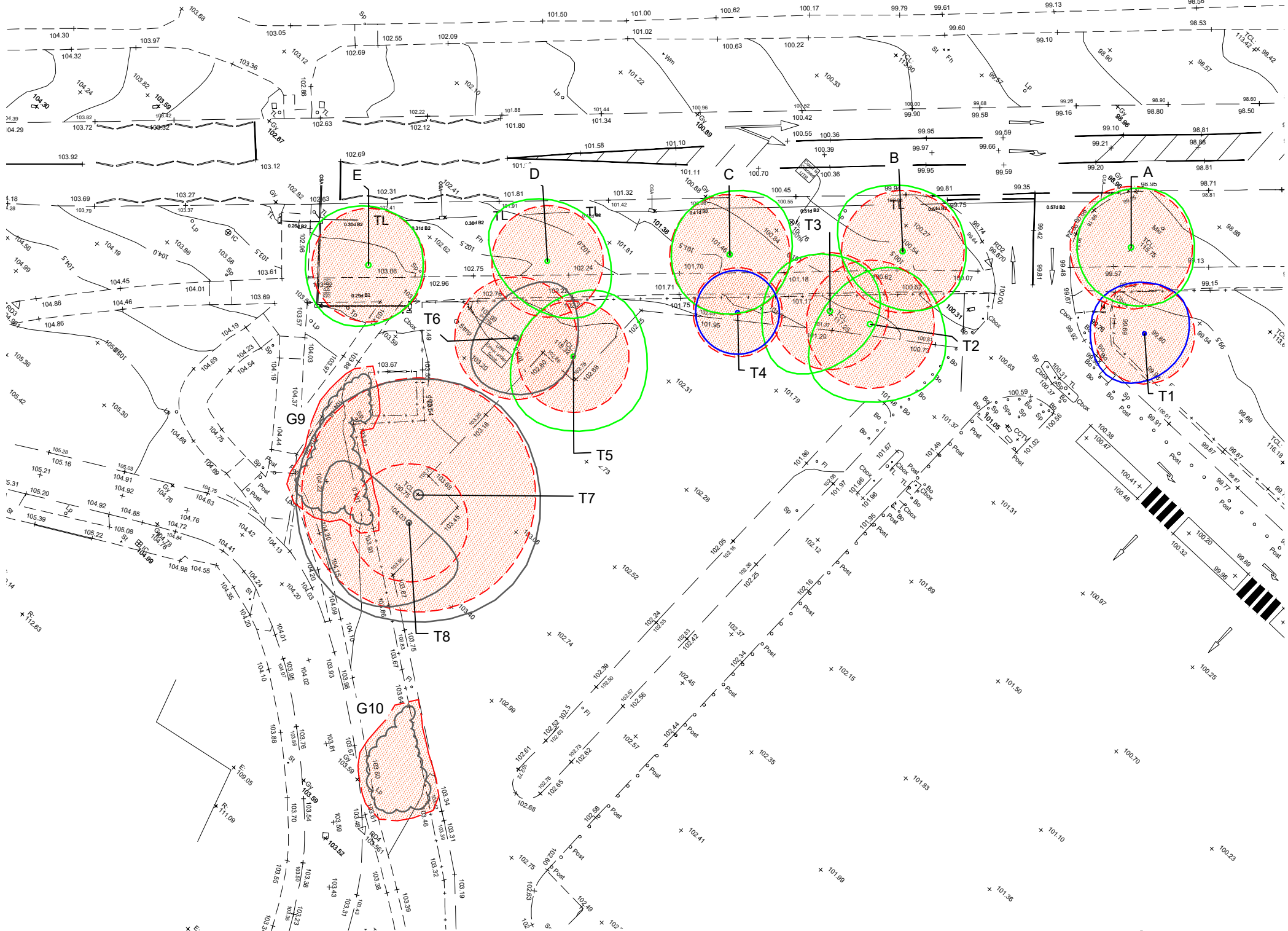


CLIENT
PALOMA CAPITAL

PROJECT
JACOB DOUWE EGBERTS,
RUSCOTE AVENUE, BANBURY

DRAWING
TREE CONSTRAINTS PLAN
SITE 3

CONTRACT	1953/19	DRG NO.	02
DATE	15/04/19	DRAWN	
ISSUE	Planning	CHECKED	MG
SCALE	1:500	ORIG SHEET	A3
CAD FILE	1953/19-01.dwg	REV	C



REFER TO BB TREES LTD PRE DEVELOPMENT TREE SURVEY DATED 20th JULY 2021 FOR DETAILS OF EXISTING TREES.

TREE LOCATIONS SHOWN ARE BASED ON INFORMATION PROVIDED BY GREENHATCH SURVEYS

THIS DRAWING HAS BEEN PREPARED IN ACCORDANCE WITH BS5837:2012.

SCALE 1:500 0 12.5 25 37.5 50m



SCALE 1:1 0 10 20 30 40 50 60 70 80 90 100mm

