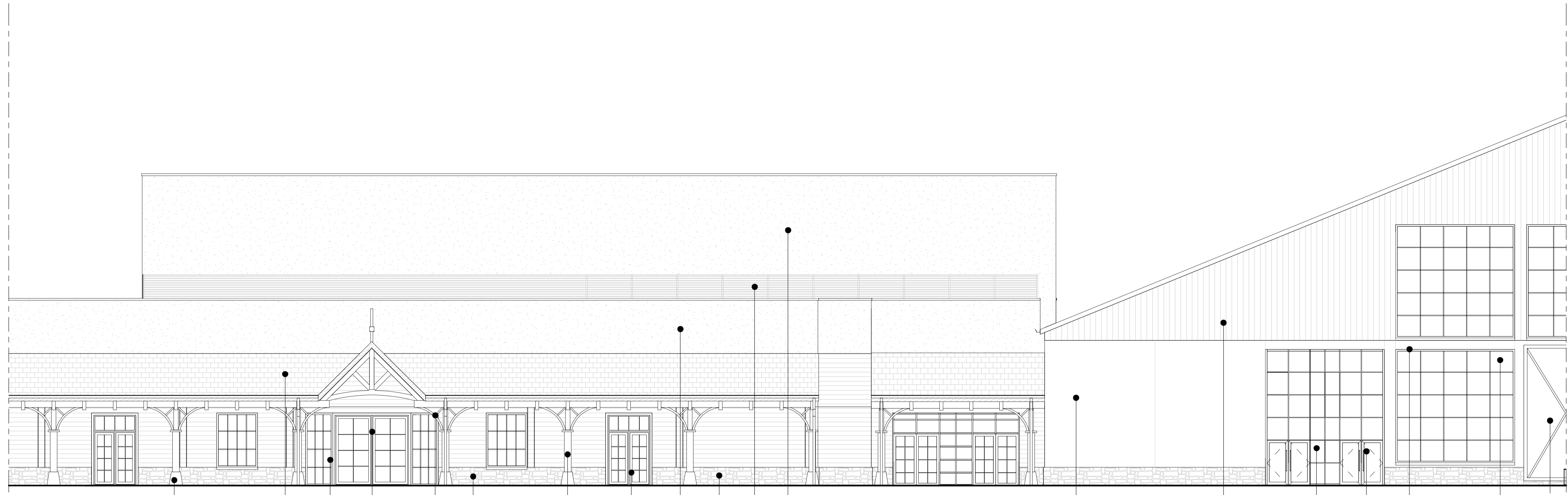
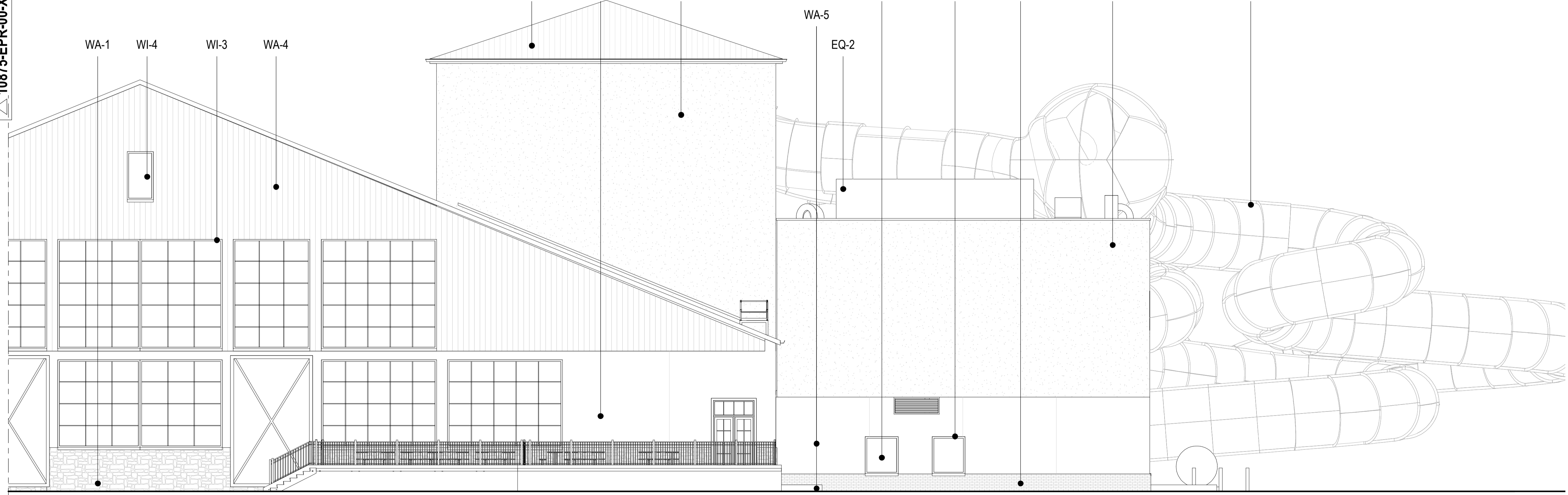


10875-EPR-00-XX-DR-A-TP-4205

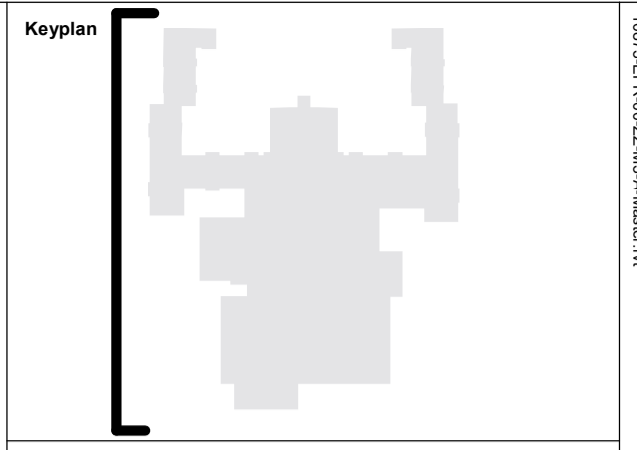
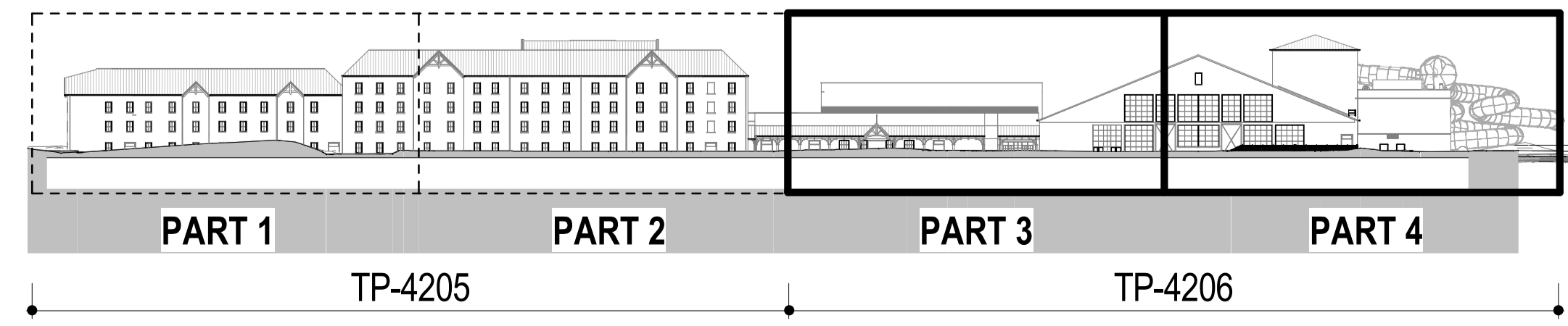


2 NW Elevation - Part 3
1:100

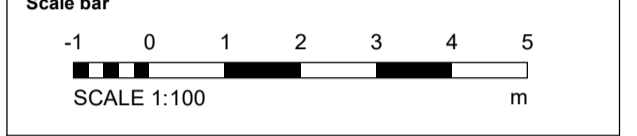
DT-7 RF-2 WI-1 DR-3 DT-5 WA-1 RF-3 DT-5 WA-5 DR-3 WA-2 WA-1 DT-11 WA-2 WI-4 WI-3 WA-6 WA-5 WA-2 WA-4 DT-13 WI-4 DR-1 WI-3 WI-4



1 NW Elevation - Part 4
1:100



Notes:
Do not scale off this document/drawing/model for any purposes other than those required in connection with the application for planning consent for the project.
This document/drawing/model is prepared for the sole use of EPR Architects' employer and the benefit of the employer's permitted licensees. No liability to any other persons is accepted by EPR Architects.
EPR Architects accepts no liability for any use of this document/drawing/model by parties other than the party for whom it was prepared or for purposes other than those for which it was prepared. Copyright in the design contained in this document/drawing/model remains vested in EPR Architects.



Key:
WA-1- Stone
WA-2- Light cream render
WA-3- Timber cladding
WA-4- Green coloured metal corrugated cladding
WA-5- Concrete panels
WA-6- Engineering buff brick

RF-1- Dark red roof tiles
RF-2- Dark grey roof tiles
RF-3- Green corrugated metal cladding

WI-1- Dark slate grey metal window frame
WI-2- Cream metal window frame
WI-3- Light grey metal window frame
WI-4- Glass

DR-1- Light grey metal door frame
DR-2- Grey metal barn doors - fixed
DR-3- Dark slate grey door frame
DR-4- Cream metal door frame

DT-1- Stone facade detailing
DT-2- Metal coping
DT-3- Dark grey gutter
DT-4- Dark grey downpipe
DT-5- Timber
DT-6- Timber board for sign
DT-7- Concrete
DT-8- Metal decorative element
DT-9- Light grey metal window cill
DT-10- Dark slate grey metal window cill
DT-11- Metal louvres
DT-12- Timber louvres
DT-13- Multi-coloured water slides
DT-14- Roller shutter

EQ-1-Flue
EQ-2- Air handling unit
EQ-3- PV panels

Notes:
1. Stonework, render, timber cladding & roof tile patterns indicative - shown for illustrative purposes.
2. This drawing has been prepared for use in connection with the application for planning consent for the project only.

P05	S2 - Planning Addendum Issue	10.12.21	NG	AJ
P04	S2 - Planning draft issued for information	07.12.21	NG	AJ
P03	Planning Issue	08.11.19	LGO	AJ
P02	Preliminary Planning Issue	30.10.19	LGO	AJ
P01	Preliminary Planning Issue	25.10.19	LGO	CT

EPR Architects
30 Millbank, London SW1P 4DU
+44(0)20 79327600
www.epr.co.uk

Proposed Great Wolf Lodge - Chesterton, Bicester, Oxfordshire
EPR Project No 10875

Proposed Elevations - North-West

Scale @A1 Status Suitability Revision
As indicated Planning S2 - P05

Project Code Originator Zone Level Type Rate Class Number
10875 - EPR - 00 - XX - DR - A - TP-4206