

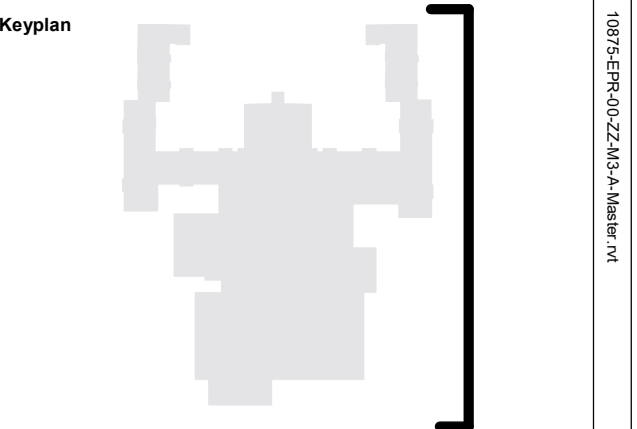
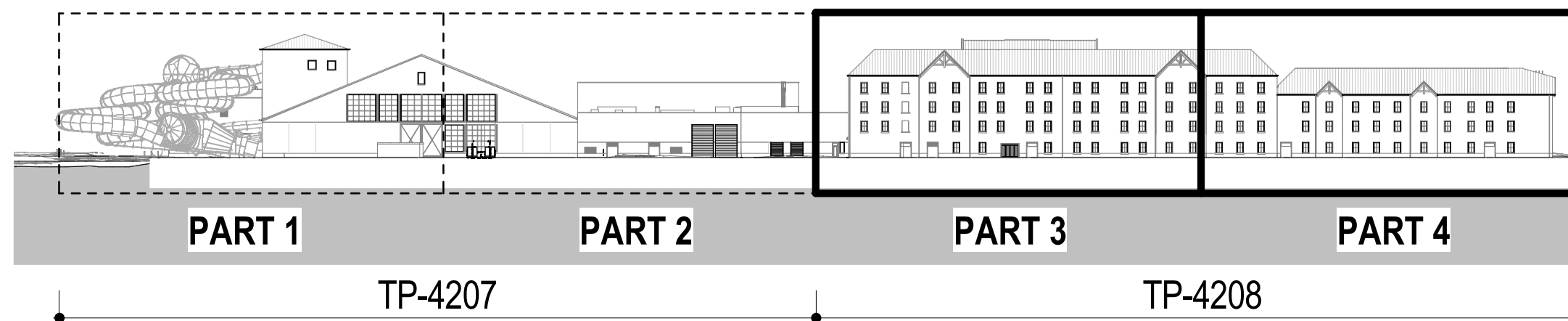


3 SE Elevation - Part 3  
04-0001 1:100

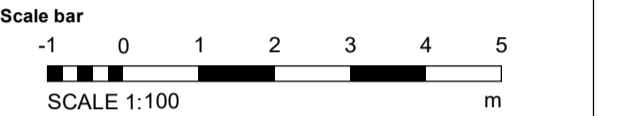
DT-1 WI-4 WI-2 WA-2 DR-4 WA-2 DR-3 DT-11 WA-3 WI-1 DT-4 DT-3 RF-2 WA-3 WI-1 DT-11 DR-3 DT-11 WI-4 DR-4 WA-1 DT-4 WA-2 RF-1 WI-4 DR-3 WI-4 WI-2 RF-2 WA-1



1 SE Elevation - Part 4  
04-0001 1:100



**Notes:**  
Do not scale off this document/drawing/model for any purposes other than those required in connection with the application for planning consent for the project.  
This document/drawing/model is prepared for the sole use of EPR Architects' employer and the benefit of the employer's permitted licensees. No liability to any other persons is accepted by EPR Architects.  
EPR Architects accepts no liability for any use of this document/drawing/model by parties other than the party for whom it was prepared or for purposes other than those for which it was prepared. Copyright in the design contained in this document/drawing/model remains vested in EPR Architects.



**Key:**  
WA-1- Stone  
WA-2- Light cream render  
WA-3- Timber cladding  
WA-4- Green coloured metal corrugated cladding  
WA-5- Concrete panels  
WA-6- Engineering buff brick

RF-1- Dark red roof tiles  
RF-2- Dark grey roof tiles  
RF-3- Green corrugated metal cladding

WI-1- Dark slate grey metal window frame  
WI-2- Cream metal window frame  
WI-3- Light grey metal window frame  
WI-4- Glass

DR-1- Light grey metal door frame  
DR-2- Grey metal barn doors - fixed  
DR-3- Dark slate grey door frame  
DR-4- Cream metal door frame

DT-1- Stone facade detailing  
DT-2- Metal coping  
DT-3- Dark grey gutter  
DT-4- Dark grey downpipe  
DT-5- Timber  
DT-6- Timber board for sign  
DT-7- Concrete  
DT-8- Metal decorative element  
DT-9- Light grey metal window cill  
DT-10- Dark slate grey metal window cill  
DT-11- Metal louvres  
DT-12- Timber louvres  
DT-13- Multi-coloured water slides  
DT-14- Roller shutter

EQ-1-Flue  
EQ-2- Air handling unit  
EQ-3- PV panels

**Notes:**  
1. Stonework, render, timber cladding & roof tile patterns indicative - shown for illustrative purposes.  
2. This drawing has been prepared for use in connection with the application for planning consent for the project only.

No.	Revision	Date	Initial	Chk'd
P05	S2 - Planning Addendum Issue	10.12.21	NG	AJ
P04	S2 - Planning draft issued for Information	07.12.21	NG	AJ
P03	Planning Issue	08.11.19	LGO	AJ
P02	Preliminary Planning Issue	30.10.19	LGO	AJ
P01	Preliminary Planning Issue	25.10.19	LGO	CT

**EPR Architects**  
30 Milbank, London SW1P 4EU  
+44(0)20 79327600  
www.epr.co.uk

Proposed Great Wolf Lodge - Chesterton, Bicester, Oxfordshire  
EPR Project No 10875

Proposed Elevations - South-East

Scale @A1 Status Suitability Revision  
As indicated Planning S2 - P05

Project Code Originator Zone Level Type Rate Class Number  
10875 - EPR - 00 - XX - DR - A - TP-4208