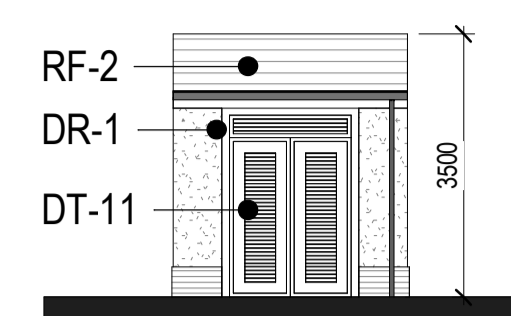
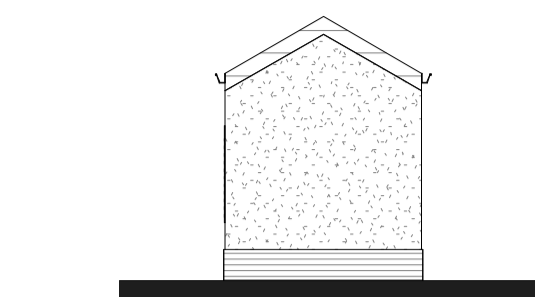


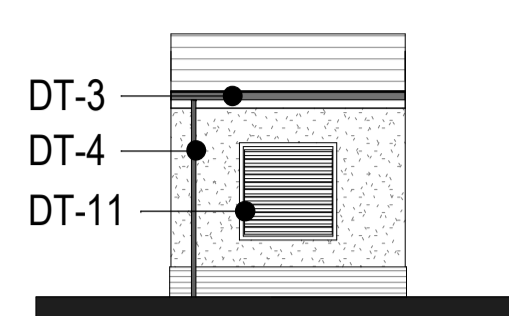
11 Gas Meter - East Elevation
1:100



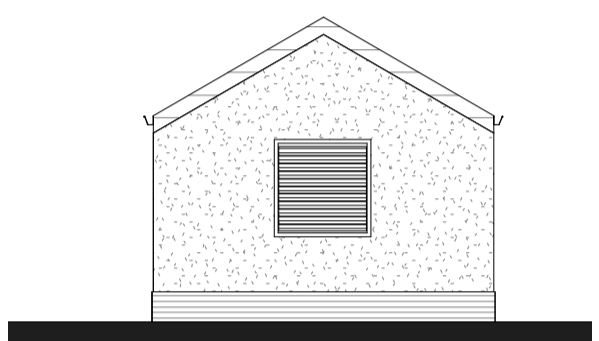
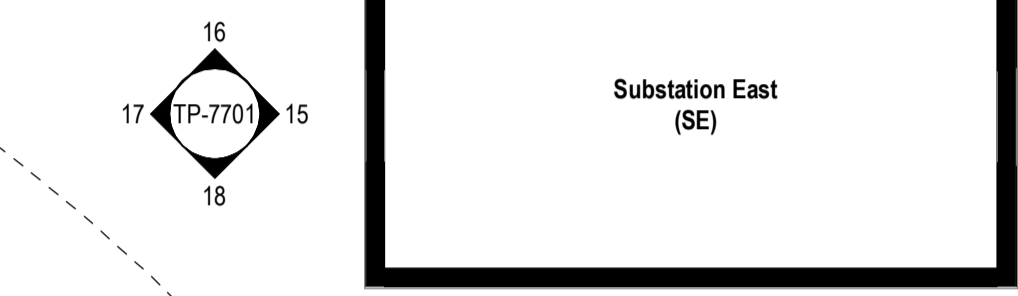
12 Gas Meter - South Elevation
1:100



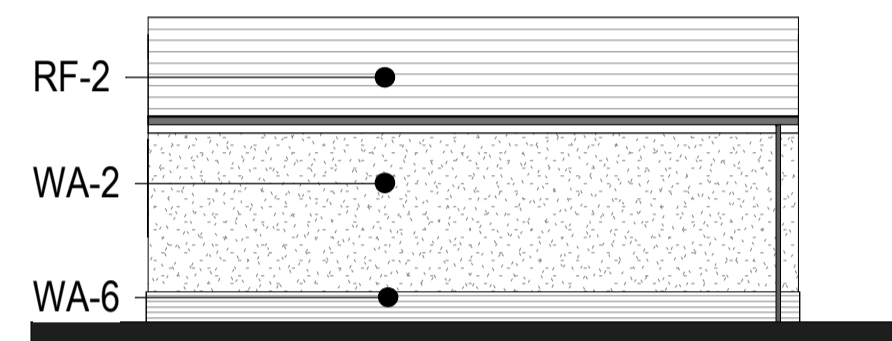
13 Gas Meter - West Elevation
1:100



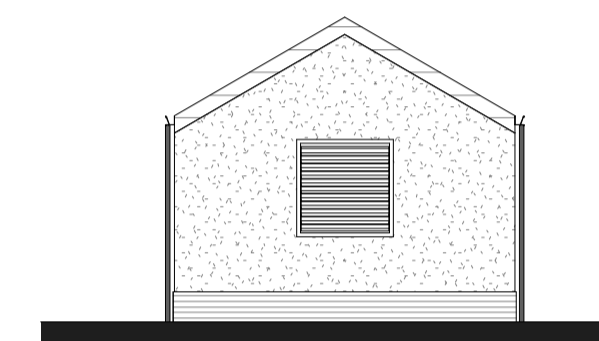
14 Gas Meter - North Elevation
1:100



15 Substation East - West Elevation
1:100



16 Substation East - South Elevation
1:100

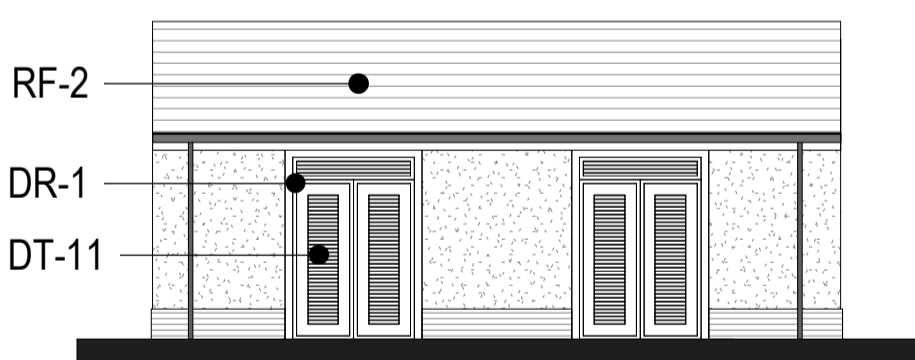
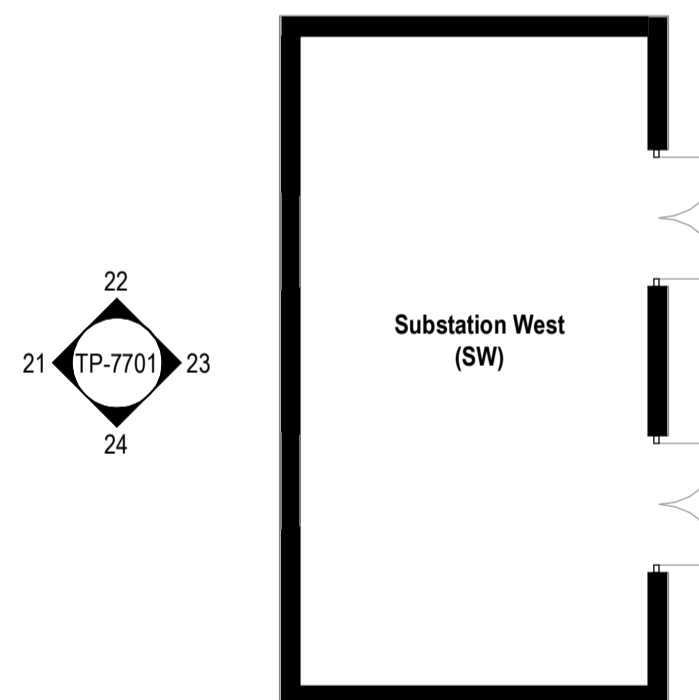


17 Substation East - East Elevation
1:100

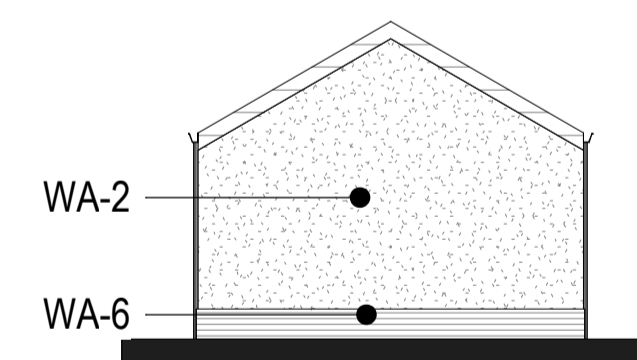


18 Substation East - North Elevation
1:100

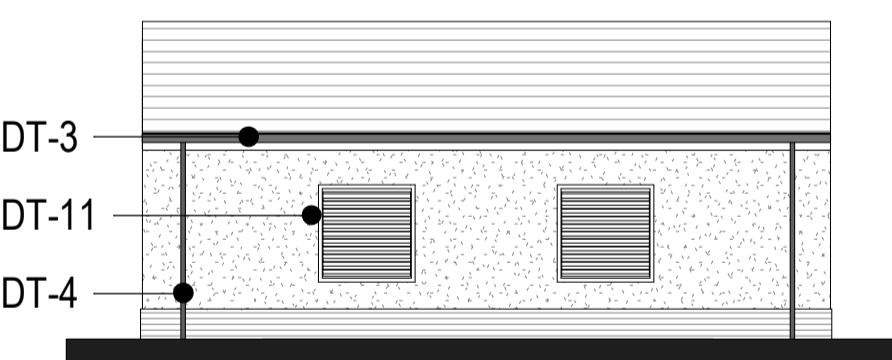
1 Electrical Substation East and Gas Meter Building - Plan
1:100



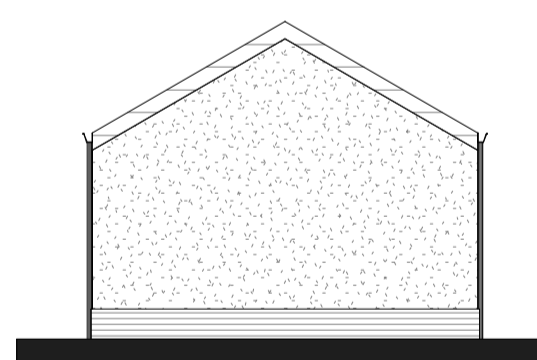
19 Substation West - East Elevation
1:100



20 Substation West - South Elevation
1:100

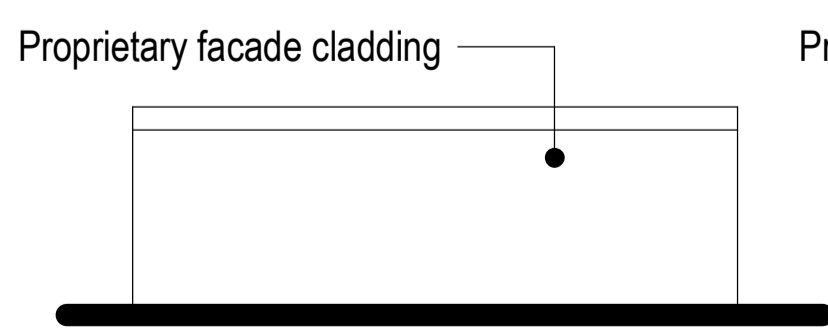
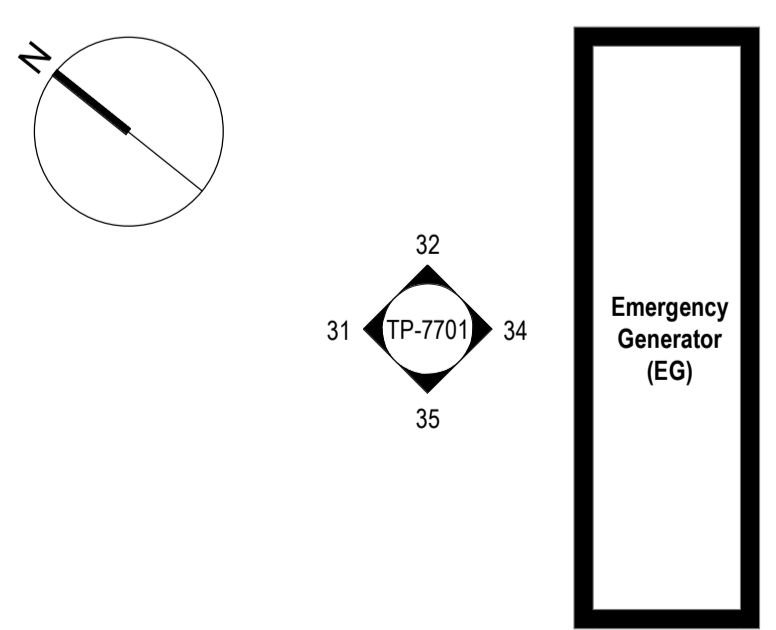


21 Substation West - West Elevation
1:100

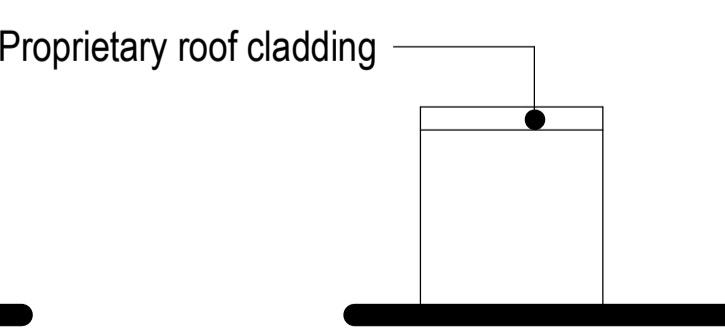


22 Substation West - North Elevation
1:100

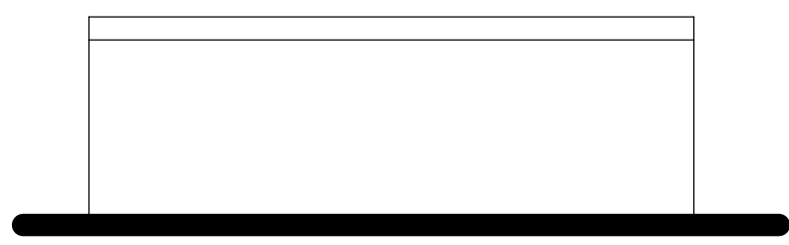
2 Electrical Substation West - Plan
1:100



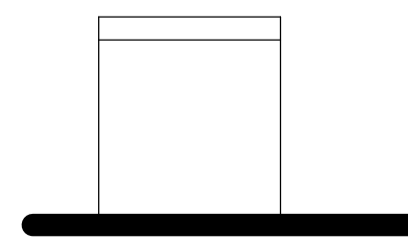
25 Emergency Generator - East Elevation
1:100



26 Emergency Generator - South Elevation
1:100

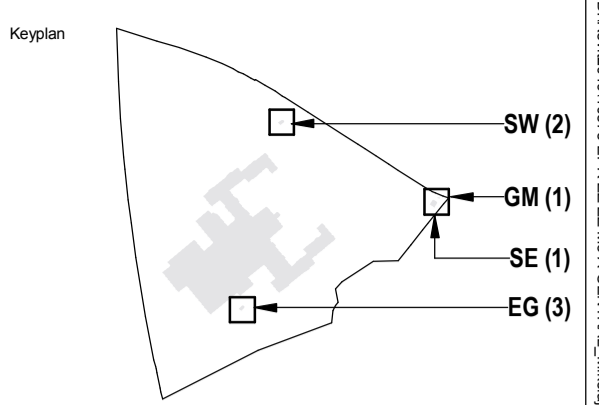


27 Emergency Generator - West Elevation
1:100



28 Emergency Generator - North Elevation
1:100

3 Emergency Generator - Proprietary
1:100

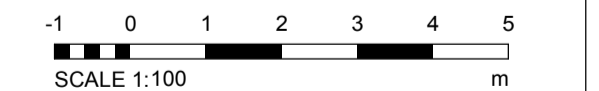


North

Notes:
1. Do not scale
2. Contractor to Check all dimensions and report omissions and errors to the Architect
3. EPR Architects accepts no liability for use of this drawing by parties other than the party for whom it was prepared or for purposes other than those for which it was prepared.
4. This drawing is issued in dwg/print format as an uncontrolled version to enable the recipient to prepare their own documents/drawings/models for which they are solely responsible. This drawing is based on project information current at the time of issue. EPR Architects Limited accepts no liability for any alterations or additions to or discrepancies arising out of any change to such project information that occurs to the information after it is issued by EPR Architects Limited.
5. This drawing does not contain shared coordinates and is not issued for coordination purposes.

No.	Revision	Date	Initial	Chk'd
3	P03 - Planning Issue	08.11.19	LOG	AJ
2	P02 - Preliminary Planning Issue	26.10.19	LOG	AJ
1	P01 - Preliminary Planning Issue	25.10.19	LOG	CT

- Key:**
- WA-1- Stone
 - WA-2- Light cream render
 - WA-3- Timber cladding
 - WA-4- Green coloured metal corrugated cladding
 - WA-5- Concrete panels
 - WA-6- Engineering buff brick
 - RF-1- Dark red roof tiles
 - RF-2- Dark grey roof tiles
 - RF-3- Green corrugated metal cladding
 - WI-1- Dark slate grey metal window frame
 - WI-2- Cream metal window frame
 - WI-3- Light grey metal window frame
 - WI-4- Glass
 - DR-1- Light grey metal door frame
 - DR-2- Grey metal barn doors - fixed
 - DR-3- Dark slate grey door frame
 - DR-4- Cream metal door frame
 - DT-1- Stone facade detailing
 - DT-2- Metal coping
 - DT-3- Dark grey gutter
 - DT-4- Dark grey downpipe
 - DT-5- Timber
 - DT-6- Timber board for sign
 - DT-7- Concrete
 - DT-8- Metal decorative element
 - DT-9- Light grey metal window cill
 - DT-10- Dark slate grey metal window cill
 - DT-11- Metal louvres
 - DT-12- Timber louvres
 - DT-13- Multi-coloured water slides
 - DT-14- Roller shutter
 - EQ-1-Flue
 - EQ-2- Air handling unit
 - EQ-3- PV panels



EPR Architects
30 Milbank, London SW1P 4DU
+44(0)20 7327800
www.epr.co.uk

Proposed Great Wolf Lodge
Chesterton, Bicester, Oxfordshire

Pumping station and Substation
Proposed Ancillary Buildings

Scale @A1 Status Revision
As indicated Planning 3

Project Code Originator Zone Level Type Role Class Number
10875 - EPR - 00 - GF - DR - A - TP-7701