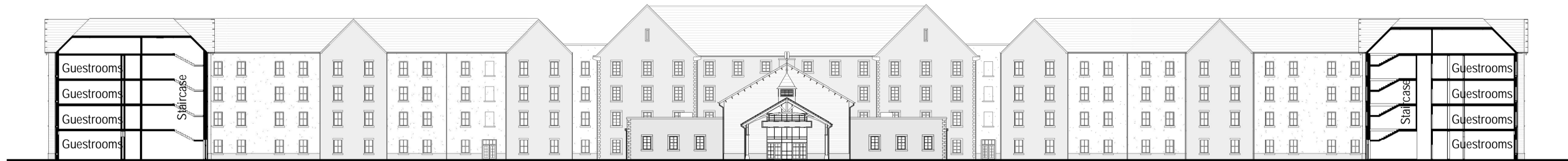
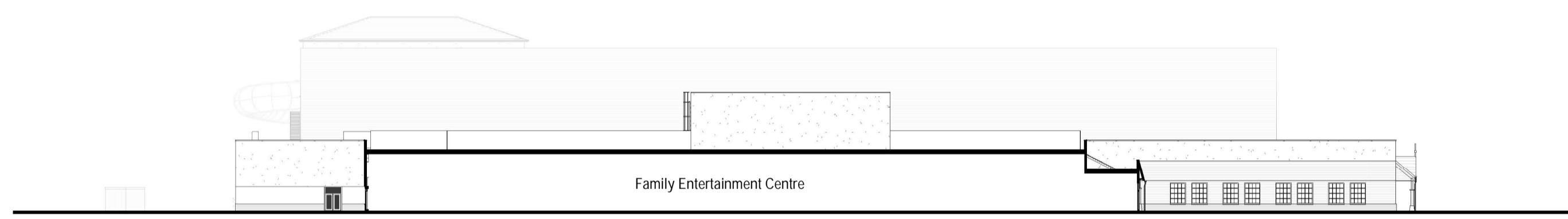




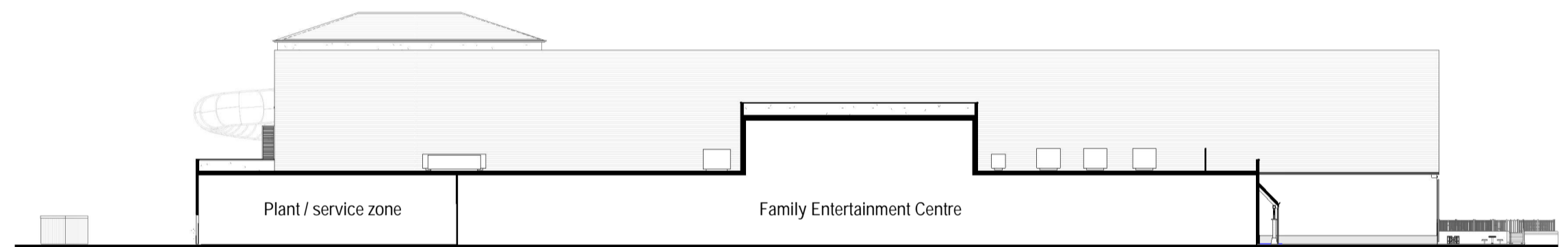
NE1 North East Elevation 1
1:500



NE2 North East Elevation 2
1:500



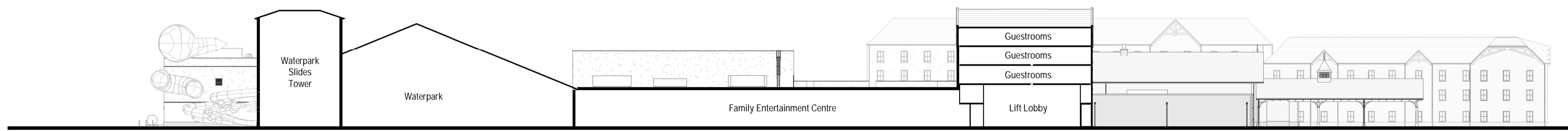
NE3 North East Elevation 3
1:500



NE4 North East Elevation 4
1:500



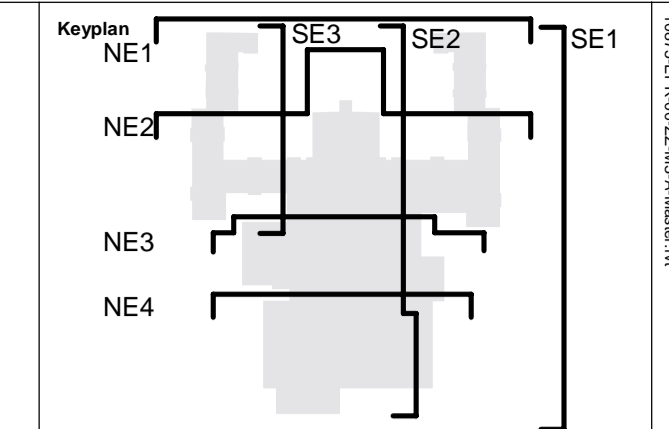
SE1 South East Elevation 1
1:500



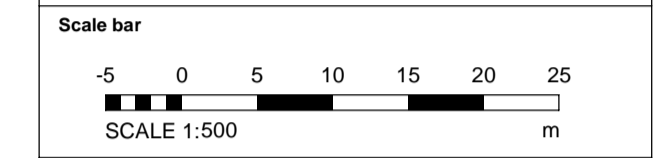
SE2 South East Elevation 2
1:500



SE3 South East Elevation 3
1:500



Notes:
Do not scale off this document/drawing/model for any purposes other than those required in connection with the application for planning consent for the project.
This document/drawing/model is prepared for the sole use of EPR Architects' employer and the benefit of the employer's permitted licensees. No liability to any other persons is accepted by EPR Architects.
EPR Architects accepts no liability for any use of this document/drawing/model by parties other than the party for whom it was prepared or for purposes other than those for which it was prepared. Copyright in the design contained in this document/drawing/model remains vested in EPR Architects.



Notes:
1. Stonework, render, timber cladding & roof tile patterns indicative - shown for illustrative purposes.
2. This drawing has been prepared for use in connection with the application for planning consent for the project only.

No.	Revision	Date	Initial	Chkd
P05	S2 - Planning Addendum Issue	10.12.21	NG	AJ
P04	S2 - Planning draft issued for information	07.12.21	NG	AJ
P03	Planning Issue	08.11.19	LGO	AJ
P02	Preliminary Planning Issue	30.10.19	LGO	AJ
P01	Preliminary Planning Issue	25.10.19	LGO	CT

EPR Architects
30 Milbank, London SW1P 4DU
+44(0)20 79327600
www.epr.co.uk

Proposed Great Wolf Lodge - Chesterton, Bicester, Oxfordshire
EPR Project No 10875

Proposed Elevations - East

Scale @A1 Status Submittal Revision
As indicated Planning S2 - P05

Project Code Originator Zone Level Type Rate Class Number
10875 - EPR - 00 - XX - EL - A - TP-0401