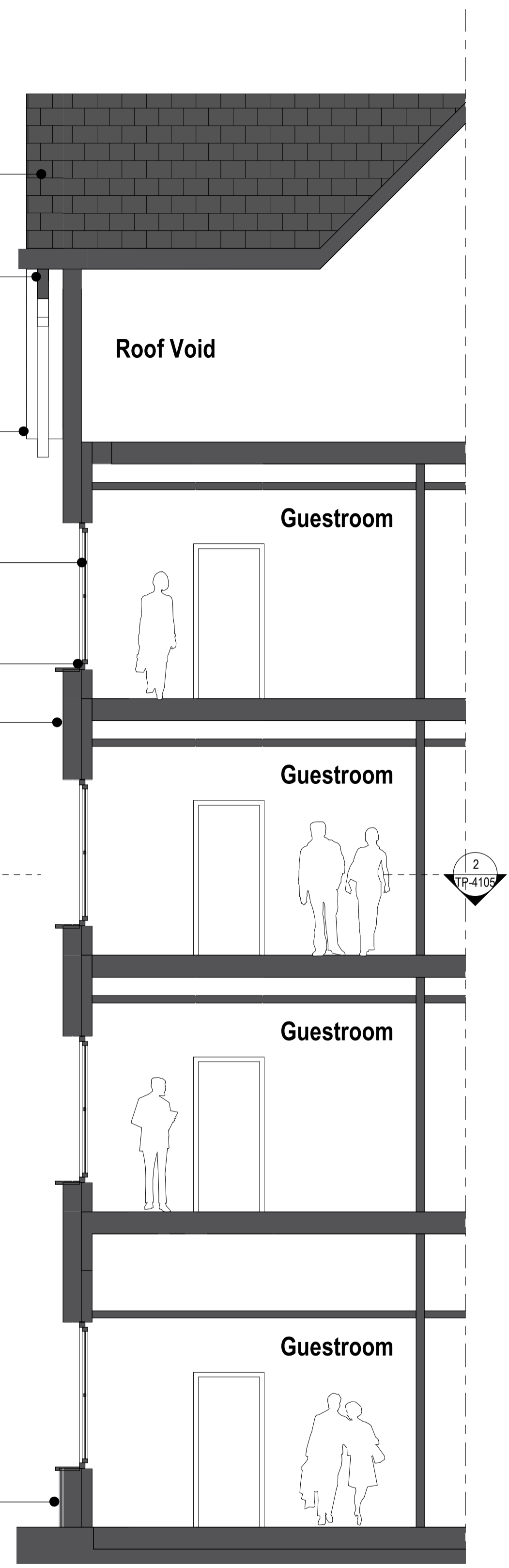
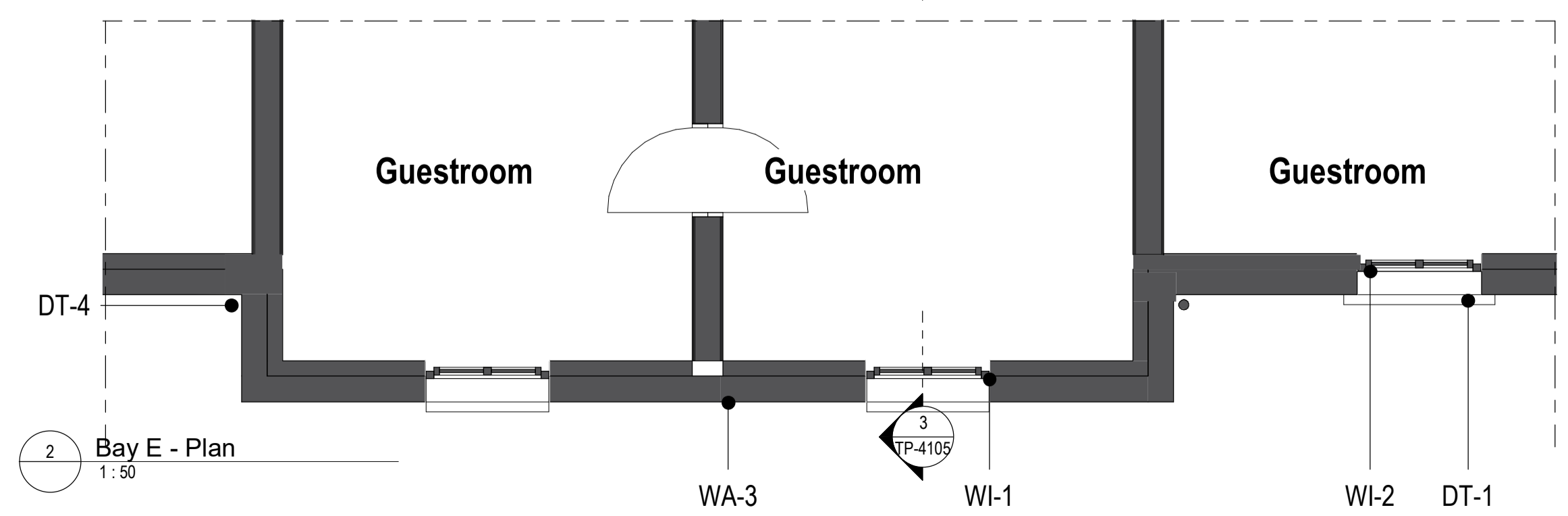




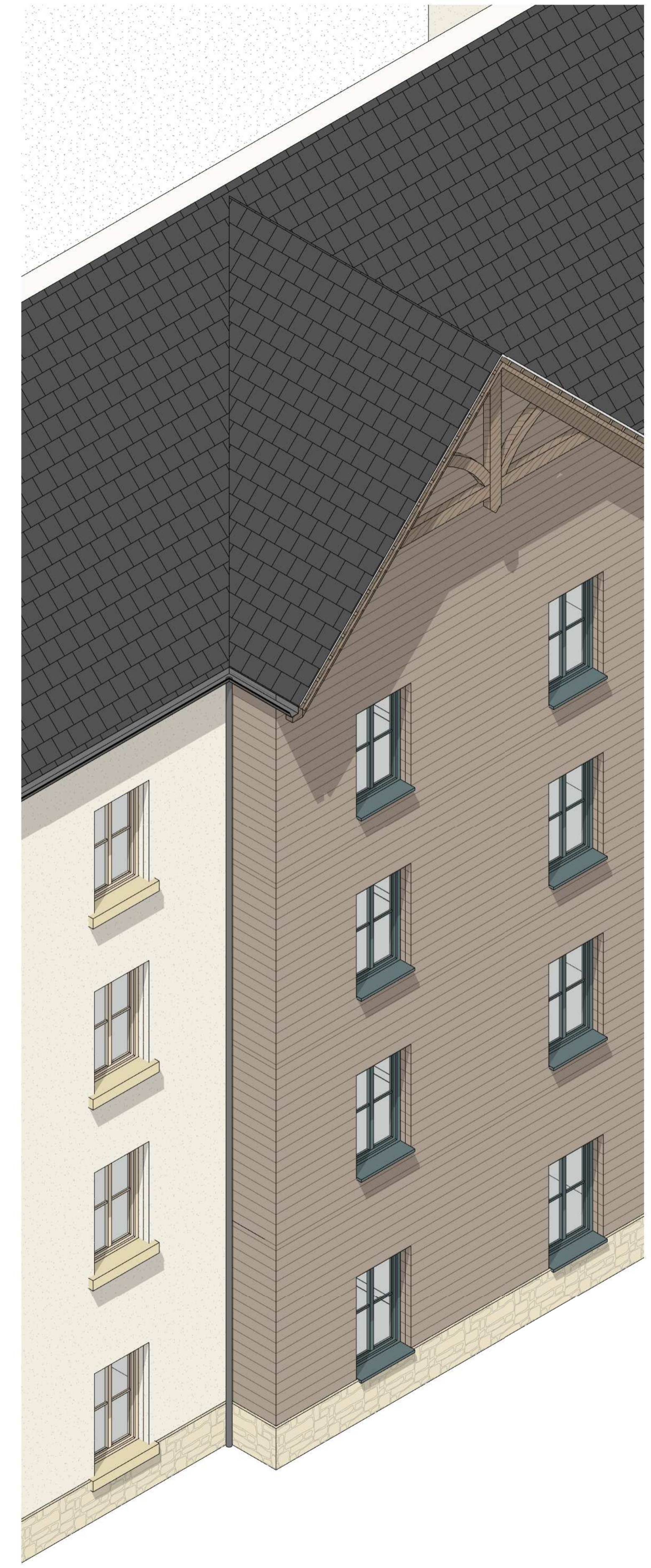
1 Bay E - Elevation NW  
1:50



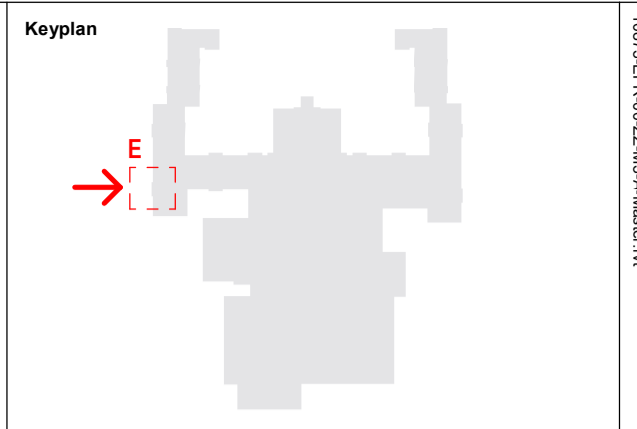
3 Bay E - Section  
1:50



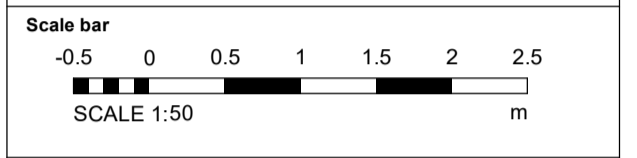
2 Bay E - Plan  
1:50



4 Bay E - Axonometric



**Notes:**  
Do not scale off this document/drawing/model for any purposes other than those required in connection with the application for planning consent for the project.  
This document/drawing/model is prepared for the sole use of EPR Architects' employer and the benefit of the employer's permitted licensees. No liability to any other persons is accepted by EPR Architects.  
EPR Architects accepts no liability for any use of this document/drawing/model by parties other than the party for whom it was prepared or for purposes other than those for which it was prepared. Copyright in the design contained in this document/drawing/model remains vested in EPR Architects.



- Key:**
- WA-1- Stone
  - WA-2- Light cream render
  - WA-3- Timber cladding
  - WA-4- Green coloured metal corrugated cladding
  - WA-5- Concrete panels
  - WA-6- Engineering buff brick
- RF-1- Dark red roof tiles
  - RF-2- Dark grey roof tiles
  - RF-3- Green corrugated metal cladding
- WI-1- Dark slate grey metal window frame
  - WI-2- Cream metal window frame
  - WI-3- Light grey metal window frame
  - WI-4- Glass
- DR-1- Light grey metal door frame
  - DR-2- Grey metal barn doors - fixed
  - DR-3- Dark slate grey door frame
  - DR-4- Cream metal door frame
- DT-1- Stone facade detailing
  - DT-2- Metal coping
  - DT-3- Dark grey gutter
  - DT-4- Dark grey downpipe
  - DT-5- Timber
  - DT-6- Timber board for sign
  - DT-7- Concrete
  - DT-8- Metal decorative element
  - DT-9- Light grey metal window cill
  - DT-10- Dark slate grey metal window cill
  - DT-11- Metal louvres
  - DT-12- Timber louvres
  - DT-13- Multi-coloured water slides
  - DT-14- Roller shutter
- EQ-1-Flue
  - EQ-2- Air handling unit
  - EQ-3- PV panels

**Notes:**  
1. Stonework, render, timber cladding & roof tile patterns indicative - shown for illustrative purpose.  
2. This drawing has been prepared for use in connection with the application for planning consent for the project only.

No.	Revision	Date	Initial	Chk'd
P05	S2 - Planning Addendum Issue	10.12.21	NG	AJ
P04	S2 - Planning draft issued for information	07.12.21	NG	AJ
P03	Planning Issue	08.11.19	LGO	AJ
P02	Preliminary Planning Issue	30.10.19	LGO	AJ
P01	Preliminary Planning Issue	25.10.19	LGO	CT

**EPR Architects**  
30 Mitham, London SW1P 4DU  
+44(0)20 79327600  
www.epr.co.uk

Proposed Great Wolf Lodge - Chesterton, Bicester, Oxfordshire EPR Project No 10875

Bay E  
Proposed Typical Bay Study

Scale @A1 Status Suitability Revision  
As indicated Planning S2 - P05

Project Code Originator Zone Level Type Rate Class Number  
10875 - EPR - 00 - XX - DR - A - TP-4105