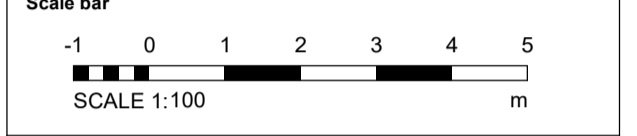


Notes:
Do not scale off this document/drawing/model for any purposes other than those required in connection with the application for planning consent for the project.
This document/drawing/model is prepared for the sole use of EPR Architects' employer and the benefit of the employer's permitted licensees. No liability to any other persons is accepted by EPR Architects.
EPR Architects accepts no liability for any use of this document/drawing/model by parties other than the party for whom it was prepared or for purposes other than those for which it was prepared. Copyright in the design contained in this document/drawing/model remains vested in EPR Architects.



10875-EPR-00-03-DR-A-TP-0342

- Notes:**
- This drawing has been prepared for use in connection with the application for planning consent for the project only.
 - EPR Architects accepts no liability for use of this drawing by parties other than the party for whom it was prepared or for purposes other than those for which it was prepared.
 - Landscape shown for illustrative purposes only; refer to Landscape Architect's for Landscape proposals for further details.
 - Do not scale.
 - This drawing is based on project information current at the time of issue. EPR Architects Limited accepts no liability for any alterations to or discrepancies arising out of any change to such project information that occurs to the information after it is issued by EPR Architects Limited.
 - This drawing does not contain shared coordinates and is not issued for coordination purposes.
 - Furniture layouts are indicative and for illustrative purposes only.
 - Structural elements are indicative and for illustrative purposes only.

- R** - Refuge Area
- List of abbreviations and acronyms used:
ACC - Accessible
AV - Audio-Video
BOH - Back of House
FEC - Family Entertainment Centre
HR - Human Resources
IT - Information Technology
IDF - Intermediate Distribution Framework
LV - Low Voltage
MDF - Main Distribution Framework
MQE - Magic Quest Encounter theme booth
WP - Water Park

No.	Revision	Date	Initial	Chk'd
P05	S2 - Planning Addendum Issue	10.12.21	NG	AJ
P04	S2 - Planning draft issued for Information	07.12.21	NG	AJ
P03	Planning Issue	08.11.19	LGO	AJ
P02	Preliminary Planning Issue	30.10.19	LGO	AJ
P01	Preliminary Planning Issue	25.10.19	LGO	CT

EPR Architects
30 Milbank, London SW1P 4EU
+44(0)20 79327600
www.epr.co.uk

Proposed Great Wolf Lodge - Chesterton, Bicester, Oxfordshire EPR Project No 10875

Proposed Third Floor Plan Part 4

Scale @A1 Status Suitability Revision
As indicated Planning S2 - P05

Project Code Originator Zone Level Type Rate Class Number
10875 - EPR - 00 - 03 - DR - A - TP-0341