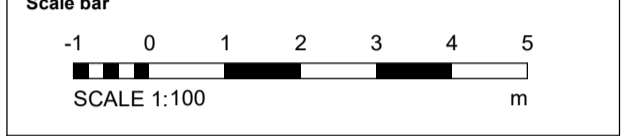


Notes:
 Do not scale off this document/drawing/model for any purposes other than those required in connection with the application for planning consent for the project.
 This document/drawing/model is prepared for the sole use of EPR Architects' employer and the benefit of the employer's permitted licensees. No liability to any other persons is accepted by EPR Architects.
 EPR Architects accepts no liability for any use of this document/drawing/model by parties other than the party for whom it was prepared or for purposes other than those for which it was prepared. Copyright in the design contained in this document/drawing/model remains vested in EPR Architects.

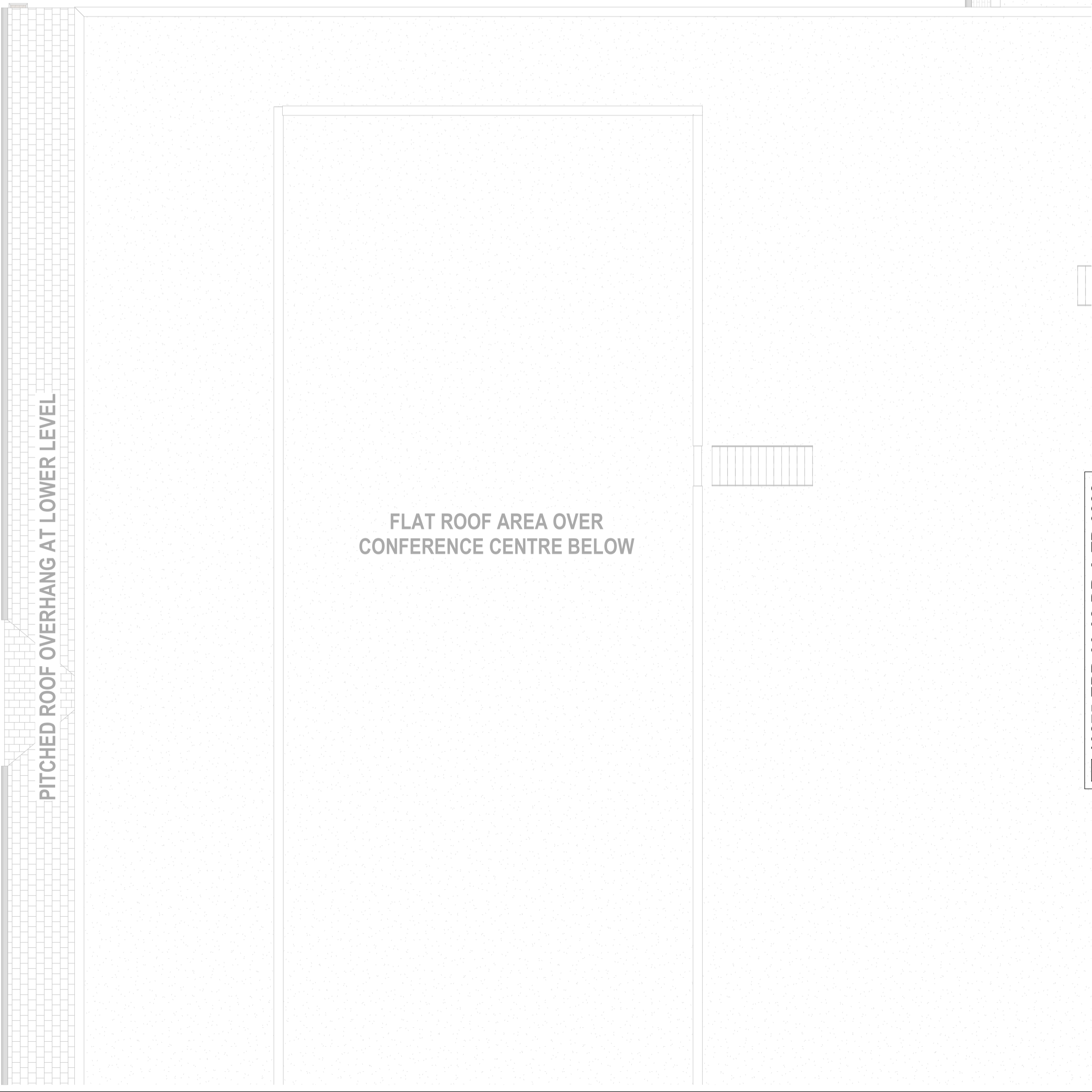


- Notes:**
- This drawing has been prepared for use in connection with the application for planning consent for the project only.
 - EPR Architects accepts no liability for use of this drawing by parties other than the party for whom it was prepared or for purposes other than those for which it was prepared.
 - Landscape shown for illustrative purposes only; refer to Landscape Architect's for Landscape proposals for further details.
 - Do not scale.
 - This drawing is based on project information current at the time of issue. EPR Architects Limited accepts no liability for any alterations to or discrepancies arising out of any change to such project information that occurs to the information after it is issued by EPR Architects Limited.
 - This drawing does not contain shared coordinates and is not issued for coordination purposes.
 - Furniture layouts are indicative and for illustrative purposes only.
 - Structural elements are indicative and for illustrative purposes only.

Key:
 Pitched roof arrow in upward direction

R - Refuge Area

- List of abbreviations and acronyms used:
- ACC - Accessible
 - AV - Audio-Video
 - BOH - Back of House
 - FEC - Family Entertainment Centre
 - HR - Human Resources
 - IT - Information Technology
 - IDF - Intermediate Distribution Framework
 - LV - Low Voltage
 - MDF - Main Distribution Framework
 - MQE - Magic Quest Encounter theme booth
 - WP - Water Park



10875-EPR-00-02-DR-A-TP-0338

| | | | | |
|-----|--|----------|-----|----|
| P05 | S2 - Planning Addendum Issue | 10.12.21 | NG | AJ |
| P04 | S2 - Planning draft issued for information | 07.12.21 | NG | AJ |
| P03 | Planning Issue | 08.11.19 | LGO | AJ |
| P02 | Preliminary Planning Issue | 30.10.19 | LGO | AJ |
| P01 | Preliminary Planning Issue | 25.10.19 | LGO | CT |

EPR Architects
 30 Millbank, London SW1P 4DU
 +44(0)20 79327600
 www.epr.co.uk

Proposed Great Wolf Lodge - Chesterton, Bicester, Oxfordshire EPR Project No 10875

Proposed Second Floor Plan Part 7

Scale @A1 Status Suitability Revision
 As indicated Planning S2 - P05

Project Code Originator Zone Level Type Rate Class Number
 10875 - EPR - 00 - 02 - DR - A - TP-0337