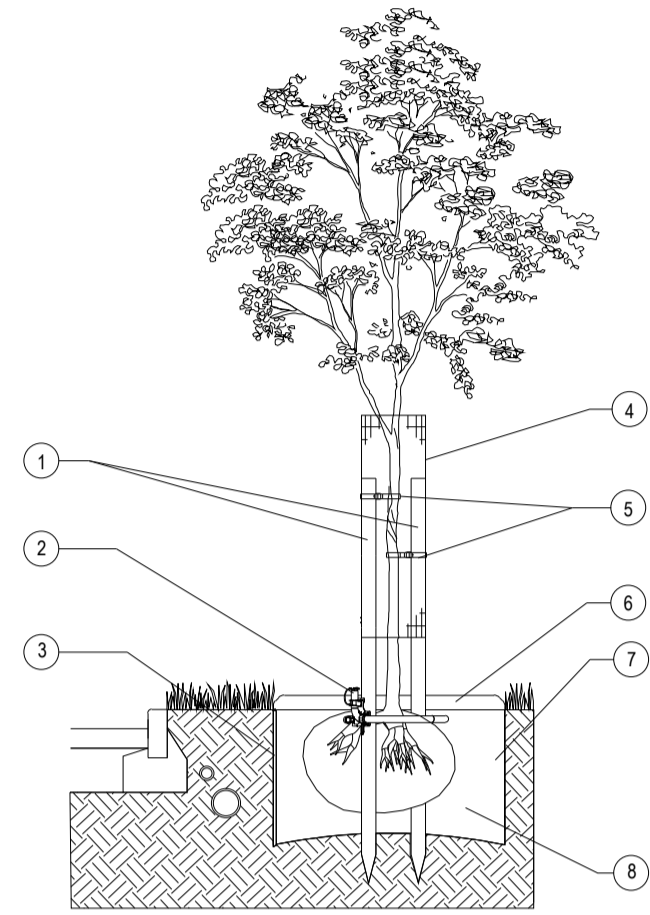


Planting Schedule – Pumping Station

Trees	Number	Common Name	Species	Girth	Height	Specification	Density
	3		Liquidambar orientalis	14-16cm	min. 450cm	BR Extra Heavy Standard Clear Stem 175-200	Counted
Total : 3							

Hedges	Number	Common Name	Species	Height	Specification	Density
	24	Common Maple	Acer campestre	60-80cm	Branched: 1+1: B	0.5Cr Double Staggered at 0.4m offset
	8	Common Dogwood	Cornus sanguinea	60-80cm	Branched: 1+1: B	0.5Cr Double Staggered at 0.4m offset
	16	Common Hazel	Corylus avellana	60-80cm	Branched: 1+1: B	0.5Cr Double Staggered at 0.4m offset
	32	Common Hawthorn	Crataegus monogyna	60-80cm	Branched: 1+1: B	0.5Cr Double Staggered at 0.4m offset
	8	Common Holly	Ilex aquifolium	60-80cm	Branched: 1+1: B	0.5Cr Double Staggered at 0.4m offset
	32	Blackthorn	Prunus spinosa	60-80cm	Branched: 1+1: B	0.5Cr Double Staggered at 0.4m offset
	8	Dog Rose	Rosa canina	60-80cm	Branched: 1+1: B	0.5Cr Double Staggered at 0.4m offset
	16	Common Elder	Sambucus nigra	60-80cm	Branched: 1+1: B	0.5Cr Double Staggered at 0.4m offset
	16	Guelder Rose	Viburnum opulus	60-80cm	Branched: 1+1: B	0.5Cr Double Staggered at 0.4m offset
Total : 160						



Tree Pit Detail

1. 2x tanalised timber tree stakes 2m, 75mm Ø driven into backfilled pit to provide support to the tree.

2. *RootRain Metro* irrigation system or similar approved. Place around top of root ball and nail to supporting stake, ensuring filler cap finishes slightly above mulch level.

3. *ReRoot* root barrier or similar approved with root deflecting ribs installed between tree root ball and hard surfaces/services where there is a risk of root damage as the tree grows outward. As a general rule, root barriers should be installed in locations where hard surfaces and/or services are located within four metres of the tree stem. Install closer to the paving/service than the tree, to allow space for the tree roots to grow into the space available, with the ribs facing the tree. Note this may mean not placing the barrier within the tree pit, but further away within its own trench. Root barriers must extend a minimum of 2m lengthways beyond the expected canopy of the mature tree. The top of the root barrier should be set as close to the soil surface as possible without being visible.

4. Tubex Treeguard Mesh Roll or similar approved. 12mm mesh roll cut to size and bent in circle 320mm Ø and tied to tree stake to protect tree from damage by people and animals. Bottom of mesh should be 300mm above ground level to allow strimmer guard to be fitted and prevent litter and grass/weeds building up around the base of the tree. Top of mesh should be below the first lateral branch.

5. Use 2x Tree Tie *GLB25A* with *GLPFA* spacer sleeve or similar approved to secure tree to support post.

6. 75mm deep bark mulch layer to be spread evenly over a circular area 1000mm Ø around the tree to prevent weed growth and retain moisture. Alternatively a suitable mulch matt can be used covering the same area.

7. Excavate tree pit to sufficient size to accommodate tree root ball. Loosen any compaction in base of excavated pit to aid drainage. The tree should be planted at a depth where the root flare is still visible, just breaching the soil surface following backfilling.

8. Backfill tree pit with subsoil and topsoil excavated from pit if this is regarded as of sufficient quality to promote the healthy establishment of the tree. If either the top soil or sub soil excavated from the pit is off poor quality, then soil ameliorants may be used sparingly or imported topsoil compliant with BS3882 should be used.

Immediately after planting, water the tree, saturating the tree pit to field capacity.

For further guidance on tree planting refer to BS 8545:2014 Section 10.

Products suggested in italics above are available from Green Blue Urban (<http://greenblueurban.com/>) and Arbortech (www.arbortech.co.uk).

Native Hedgerow Planting Detail

1. Tubex shrub shelter with supporting cane or stake or similar approved.

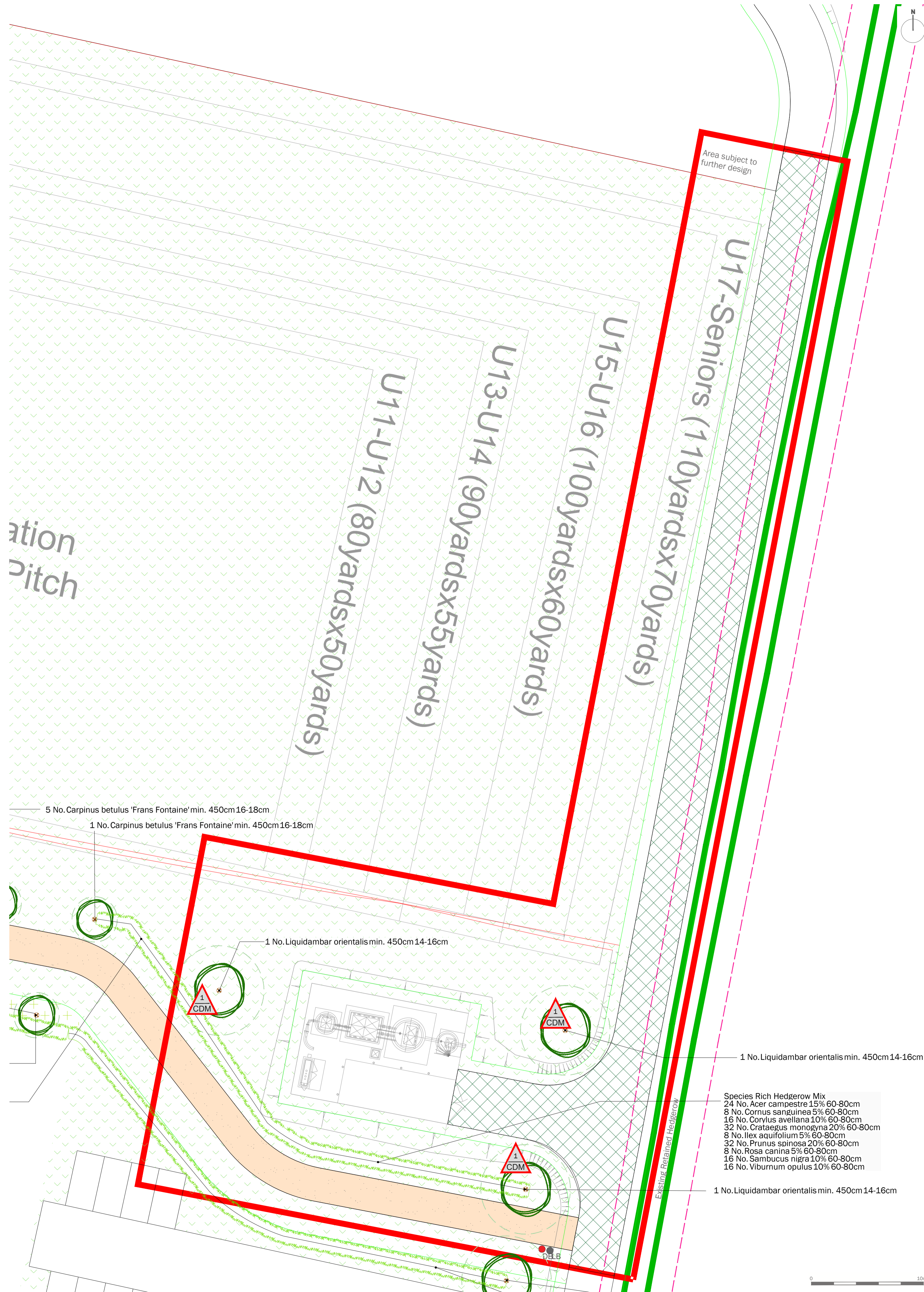
2. 2m wide biodegradable weed mat roll pegged down with biodegradable pegs along line of hedgerow to prevent weed growth and retain moisture.

3. Whip to be notch planted following clearance of any existing vegetation.

Immediately after planting, water the whip, saturating the ground around its base to field capacity.

For further general guidance on planting refer to BS8545:2014 Section 10 and BS4428:1989 Section 9.

Products suggested in italics above are available from Tubex (<http://www.tubex.com/>).



- Site boundary
- Proposed Tree Planting
Mature Canopy Illustrated
- Proposed Native Hedge
- Proposed Amenity Grass
Product: A18 Road Verge & Embankments
Supplier: Germinal Seeds
Sowing rate: 35g/ m²
- Proposed Hoggin Footpath
- Existing Retained Hedgerow
- Grasscrete Access Track
- Dog bin
Product: Broap Derby dog waste bin
- Litter bin
Product: Broap Derby litter bin

A risk assessment has been carried out on this design. Residual risks following this process are listed below. A copy of the full Design Risk Register is also available on request from EDP.

1. Checks for underground services to be made prior to planting.

For further guidance, refer to HSE Construction (Design and Management) Regulations 2015.
This drawing is to be read in conjunction with all other drawings and specifications within the package.
These drawings have been prepared for design, development and costing purposes only.
All dimensions in millimetres unless otherwise specified.
Do not scale off this drawing, written dimensions to be taken only.
All loose parts and are provided by the client and architect, except where otherwise expressly agreed in writing. EDP shall have no responsibility or liability for any loss direct or consequential.
This drawing must not be copied in whole or part without prior written consent from EDP.

purpose of issue	PLANNING	date	by
b Key added for litter and dog waste bins which fall within the application		22-11-2021	JW
a Key added for grasscrete access track		17-11-2021	JW
- Original		01-11-2021	JW
rev / description		date	by

client
L&Q Estates

project title
Wykhm Park Farm

drawing title
Pumping Station Landscape Design

Sheet 1 of 1

date	29TH OCTOBER 2021	drawn by	JW
drawing number	edp5378_d023b	checked	DR
scale	1:200 @ A1	QA	RB

the environmental dimension partnership

Registered office: 01285 740427 - www.edp-uk.co.uk - info@edp-uk.co.uk