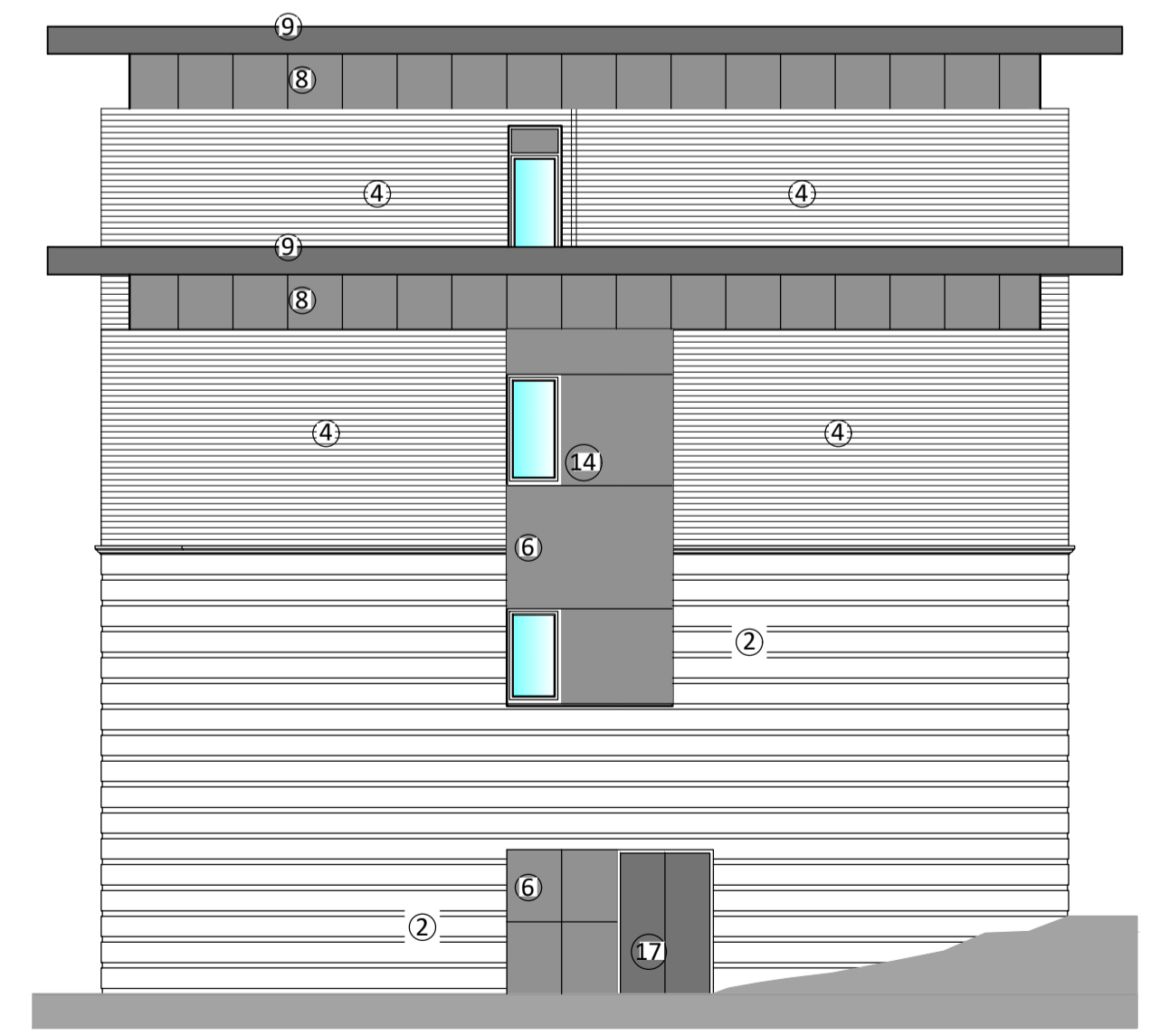


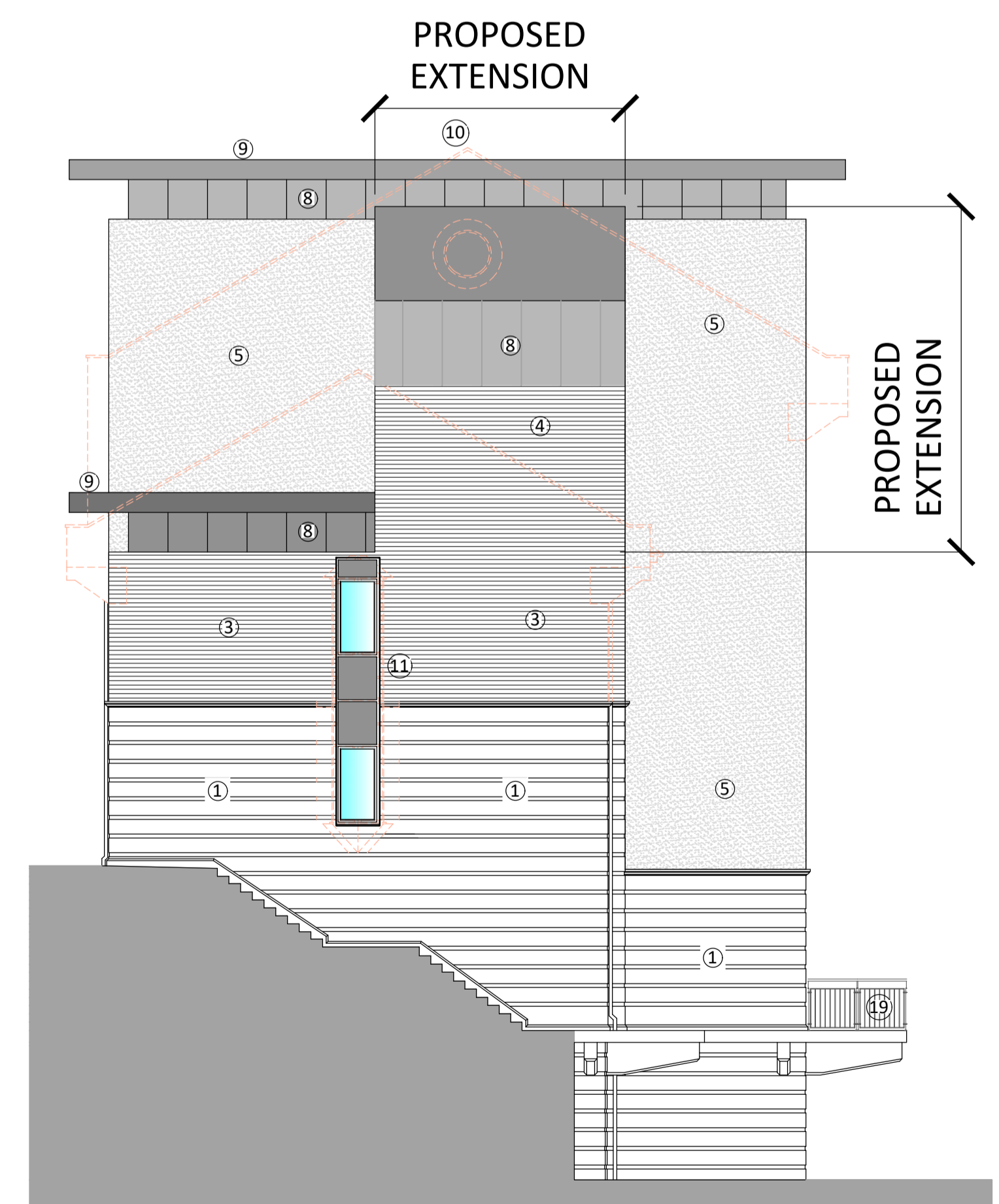
A 08.11.21 GENERAL KEY UPDATE, END ELEVATIONS ADDED SPB  
 B 12.11.21 GENERAL UPDATE SPB  
 C 17.11.21 WINDOW OMITTED, SPB  
 D 21.01.22 ROOF UPDATED, RENDER PANEL OMITTED. HR



**A** Proposed North Elevation  
**21** 1:100@A1

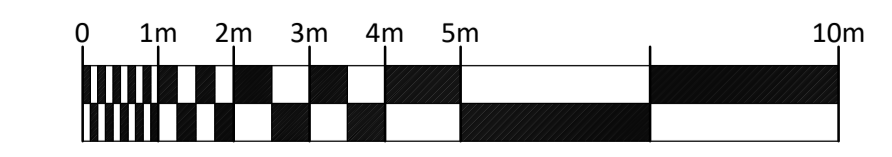


**B** Proposed East Elevation  
**21** 1:100@A1



**C** Proposed West Elevation  
**21** 1:100@A1

Elevation Materials Key	
	Existing building demolished.
<b>Walls</b>	
1	Existing buff brickwork with feature coursing.
1a	Existing buff brickwork.
2	New buff brickwork with feature coursing to match existing
2a	New buff engineering brick below DPC up to two courses below ground level
2b	New buff brickwork to match existing
3	Existing red brickwork.
4	New red brickwork to match existings
5	Render panel with thru colour render - colour RAL 9010 Off white
5a	Trespa horizontal cladding panel - colour RAL 7012 Basalt grey
6	Trespa cladding panel - colour RAL 7012 Basalt grey
7	Existing concrete painted white
<b>Roof</b>	
8	Recessed feature vertical cladding panel - colour RAL 7012 Basalt grey
9	Single ply membrane flat roof colour grey, 2mm flat powder coated aluminium soffit / fascia supported off sheeting rails, fixed back to structure. - colour RAL 7012 Basalt grey
10	Existing Ridge line height
<b>Window</b>	
Replacement windows to be thermally broken aluminium window system, colour Basalt grey. System to achieve min 2.2w/m²K - colour RAL 7012 Basalt grey	
11	Replacement window with low level spandrel panel - colour RAL 7012 Basalt grey
12	Replacement window with side spandrel panel - colour RAL 7012 Basalt grey
13	Replacement window - colour RAL 7012 Basalt grey
14	New window - colour RAL 7012 Basalt grey
<b>Doors</b>	
15	Automatic sliding doors with card entry system. Thermally broken aluminium frame, Colour Basalt Grey
16	Power assisted glazed entry door. Thermally broken aluminium frame. Colour Basalt grey
17	Security door, metal finish, colour RAL 7012 Basalt grey
18	2mm flat powder coated aluminium canopy supported off sheeting rails, fixed back to structure. - colour blue Pantone 294c
19	Replacement compliant metal colour coated railings colour Basalt grey
Signage to separate adverts application	



# PLANNING

**JWA Architects Limited**  
 1st Floor, Old Town Hall,  
 Church Street,  
 Market Harborough  
 Leicestershire, LE16 7AA  
 T +44 (0) 1858 525343  
 E office@jwa-architects.co.uk  
 W www.jwa-architects.co.uk

Client: YOGOS

Project: PROPOSED TRAVELODGE  
 MIDDLETON ROAD  
 BANBURY

Drawing: PROPOSED  
 ELEVATIONS  
 1 OF 2

Purpose: PLANNING Date: 01.11.21  
 Scale: 1:100@A1 Drawn: SPB  
 Dwg. No: J9347 - 21 Revision: D