

Tree Removals Plan

Tree to be retained

Tree to be removed

Tree to be removed due to poor condition

Proposed tree planting

Extent of Tree Canopy  
Theoretical Root Protection Area (BS5837)  
BS 5837 Category (See Below)  
Tree Survey Number-BS 5837 Category  
BS 5837 Category  
(See Tree Survey for further details)

**Category U - Red Stem Disc**  
Those in such a condition that any existing value would be lost within 10 years and which should in the current context, be removed for reasons of sound arboricultural management.

**Category A - Green Stem Disc**  
Those of high quality and value - in such a condition as to be able to make a substantial contribution (a minimum of 40 years is suggested).

**Category B - Blue Stem Disc**  
Those of moderate quality and value - those in such a condition as to make a significant contribution (a minimum of 20 years is suggested).

**Category C - Grey Stem Disc**  
Those of low quality and value - currently in adequate condition to remain until new planting could be established (a minimum of 10 years is suggested), or young trees with a stem diameter below 150 mm.

Trees not surveyed as individual trees but included within hedgerows or other groups

Phase 2  
Land West of Bretch Hill,  
Banbury,  
Oxfordshire, OX16

Tree Removals Plan  
For  
Lone Star Land Ltd

Ruskins Tree Consultancy

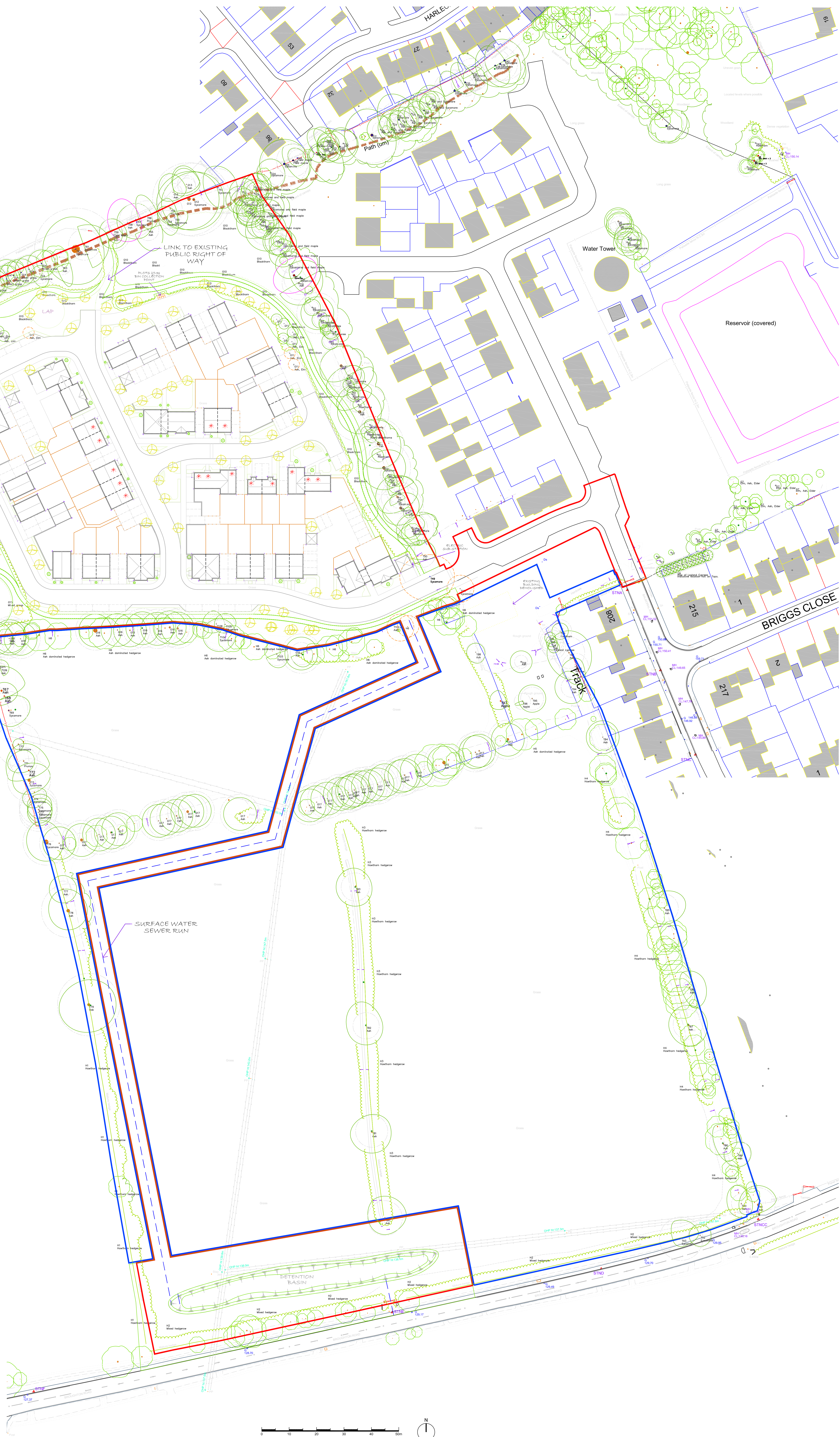
01277 846990 info@ruskinstreeconsultancy.co.uk  
www.ruskinstreeconsultancy.co.uk

Scale  
Date  
Project No.  
Dwg. No.

1:500 @ A0  
21/10/2021  
0421-9029  
TRP-01 Rev 2

Drawn by  
Checked by

PW  
JG





## **Tree Protection Plan Illustrative Layout**

Submitted separately due to file size



Tree Protection Plan

Tree Protection Zone / Construction Exclusion Zone  
Magenta line shows alignment of tree protection fencing. Tree Protection Fence to be erected area prior to any works commencing on site. No access into fenced-off hatched area during enabling, groundworks or construction works. Any works within the hatched fenced-off area including landscaping works to follow guidelines as outlined in the Arboricultural Report.

Off-Site farmland

Tree to be retained

Tree to be removed

Tree to be removed due to poor condition

Proposed tree planting

Extent of Tree Canopy  
Theoretical Root Protection Area BS5837  
BS 5837 Category (See Below)  
Tree Survey Number-BS 5837 Category

Phase 2  
Land West of Bretch Hill,  
Banbury,  
Oxfordshire, OX16

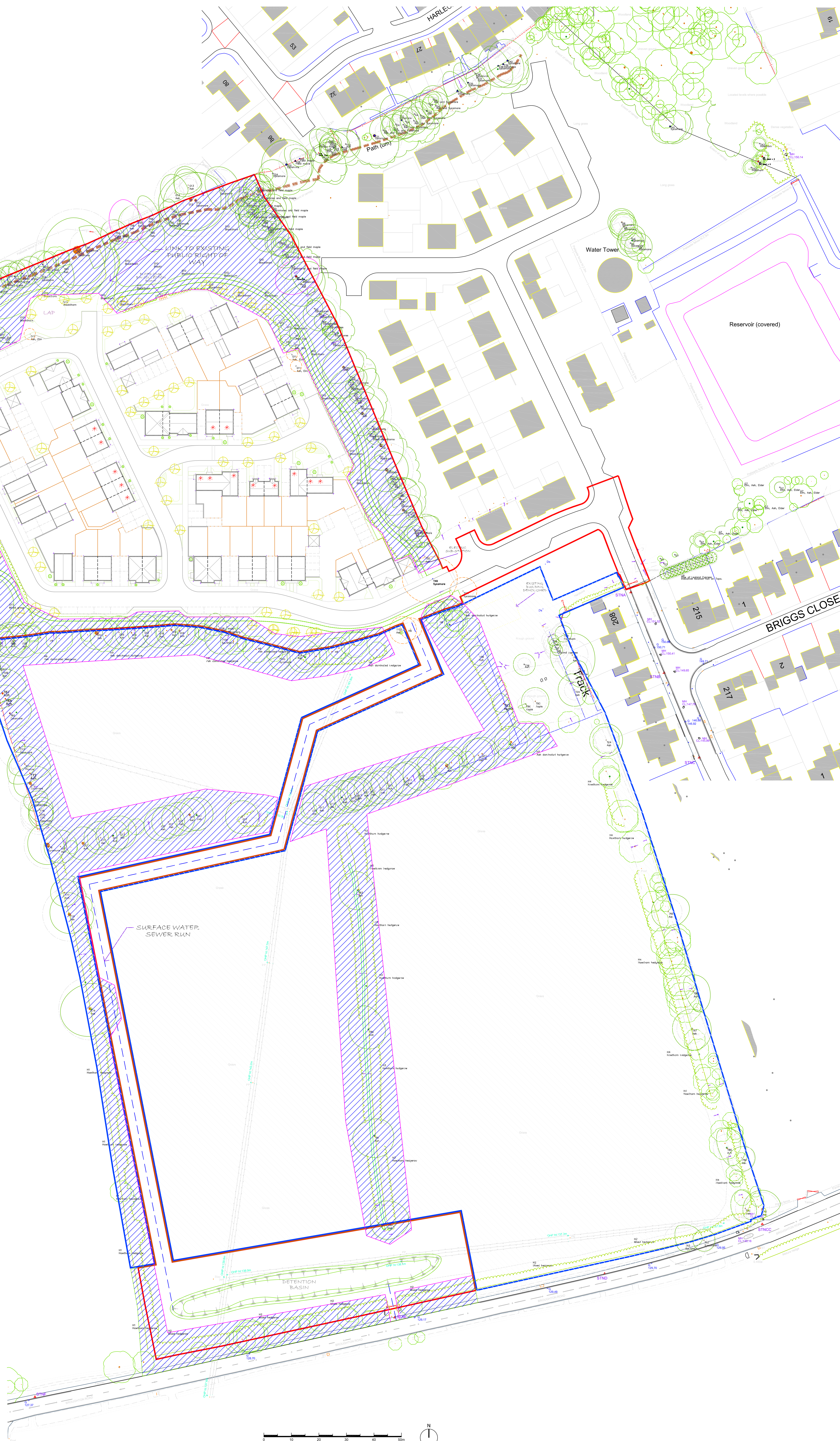
Tree Protection Plan  
For  
Lone Star Land Ltd

Ruskings Tree Consultancy

01277 849990 info@ruskings-tree-consultancy.co.uk  
www.ruskings-tree-consultancy.co.uk

Scale 1:500 @ A0  
Date 22/10/2021  
Project No. 0421-9029  
Dwg No. TPP-01 Rev 3

Drawn by PW  
Checked by JG





## **Appendix 2**

### **Tree Protection Fencing Information Sheet**

### **Tree Protection Fencing Specification**

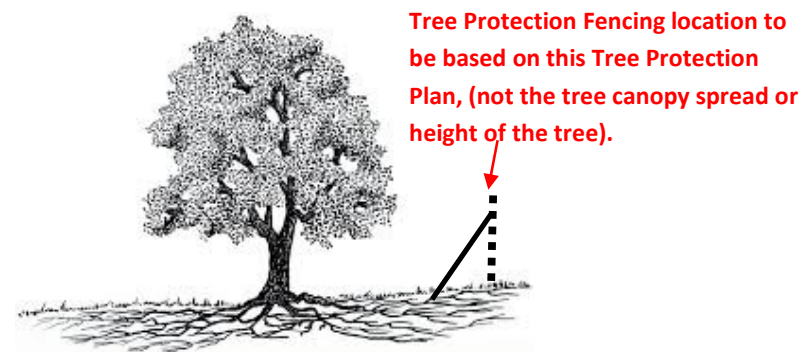
### **Tree Protection Fencing Notice**

## Tree Protection Information

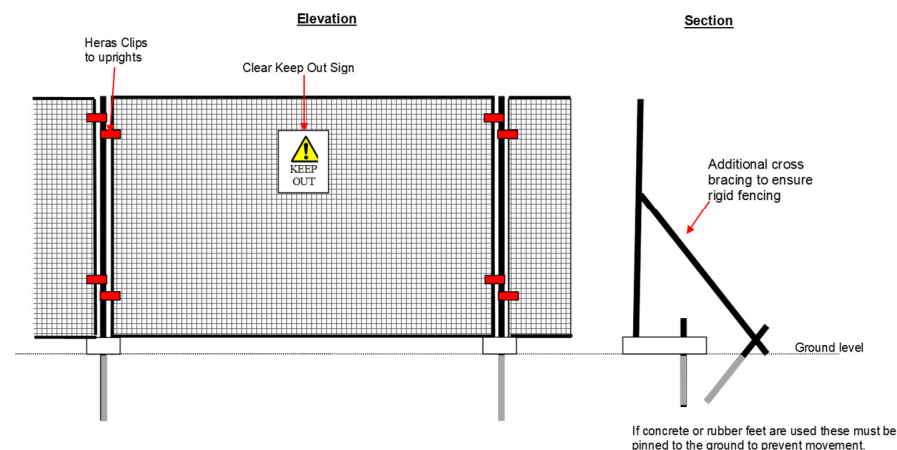
Prior to any demolition / remediation / enabling works, site scrape or groundworks commencing the Tree Protection Fencing will be installed in accordance with this Tree Protection Plan. The Tree Protection Fencing will remain in situ throughout the construction works.

Within the fenced-off Construction Exclusion Zones there will be:

- No Pedestrian, Machinery or Vehicular Access.
- No level changes + or -
- No storage of plant or materials.
- No storage or handling of any chemicals including cement washings.
- Any works within the fenced-off areas will be subject to Arboricultural Supervision.
- No Fires within 10m of the Tree Protection Fencing.
- Clear Tree Protection Signs will be attached at 5m intervals along the fenceline  
See Below



## Tree Protection Fencing Specification



### TREE PROTECTION NOTICE



### **PLEASE KEEP OUT**

The trees / hedgerows in this area are protected by Planning Conditions and may be protected by Statutory Protection including Tree Preservation Orders.

Any works in this fenced-off area may result in damage to the above ground parts or root systems of this vegetation.

**Damage to trees may lead to enforcement action and or a criminal prosecution.**

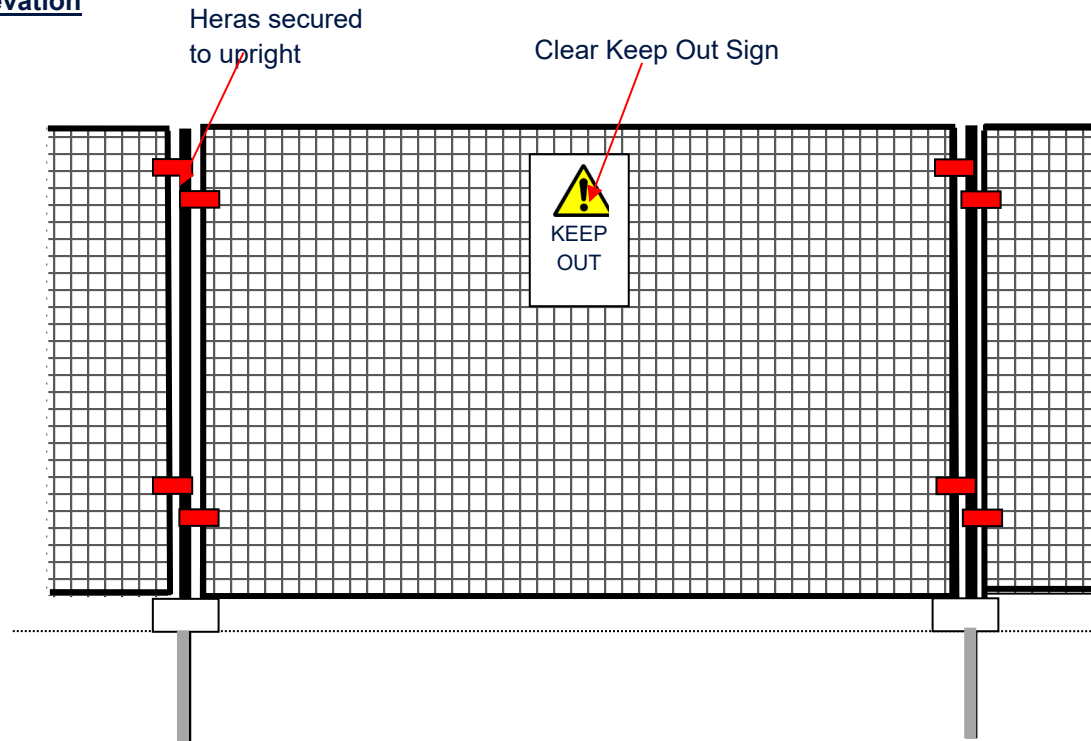
Any works in this area must be undertaken as per the Arboricultural Report or with permission from the Local Planning Authority Tree Officer.

For more information please contact  
[info@ruskins-tree-consultancy.co.uk](mailto:info@ruskins-tree-consultancy.co.uk)

For further information on any tree issues please contact  
[info@ruskins-tree-consultancy.co.uk](mailto:info@ruskins-tree-consultancy.co.uk)

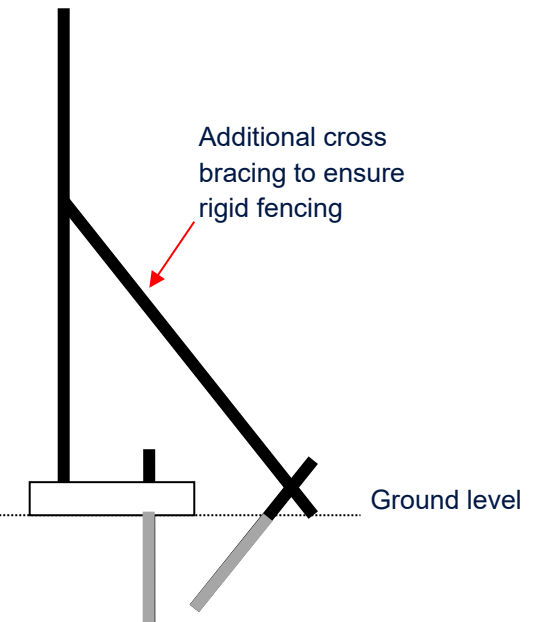
## Tree Protection Fencing Specification

### Elevation



Tree Protection Fencing should be erected as per the Tree Protection Plan prior to any works commencing or materials being delivered to site.

### Section



If concrete or rubber feet are used these must be pinned to the ground to prevent movement.

# **TREE PROTECTION AREA**



## **PLEASE KEEP OUT**

The trees in this fenced-off area are protected by Statutory Protection and / or Planning Conditions. Any works in this fenced-off area may result in damage to the above ground parts or root system of these trees.

Damage to these trees may lead to enforcement action or a criminal prosecution.

Within this area there shall be:

- No excavation by any means
- No level changes + or –
- No storage of materials
- No access for machinery / pedestrians
- No Fires within 10m of the fencing

Any works in this area must be undertaken as per the Arboricultural Report or with permission from the Local Planning Authority Tree Officer.

For further information please contact [info@ruskins-tree-consultancy.co.uk](mailto:info@ruskins-tree-consultancy.co.uk).