

WENDLEBURY ROAD
(Leading to VENDEE DRIVE)

LANDSCAPING SPECIFICATION AS WEDDLES
DWG. No. DLBI 01B;

- KEY: Existing Tree Retained, Existing Hedge Retained, Vegetation to be removed, Extra Heavy Standard Trees, Ornamental Shrub, Ornamental Shrub and Perennials, Native Shrub, Hedging, Plant Mixes, Meadow, Existing Levels, Proposed Levels, Distance from base of tree to nearest edge of excavation

OUTLINE SPECIFICATION:

- GENERAL: All works to be in accordance with all relevant British Standards and the Landscape Consultant's plans and specification...
SETTING OUT: All dimensions and levels should be checked and adjusted on site...
SITE PREPARATION: Building rubble in excess of 50mm dimension to be removed...
TOPSOIL: Multipurpose topsoil BS:3882 medium loam...
TOPSOIL - MEADOW: Specific purpose topsoil to BS:3882, low fertility...
TREE PIT: Extra Heavy Standard 1200mmØ x 750mm depth...
PREPARATORY HERBICIDE: Weed allowed to grow and treated with up to three applications...
GRASSING: Grassing between April-October...
PLANTS: General, Plant material in accordance with the HTA's National Plant Specification 1997...

Quality as supplied by: Johnsons of Whitley Ltd. York YO28 8AQ. Tel: 01423 330234. Or other nursery listed in the Horticultural Trades Association Nursery Certification Scheme.

Planting: Plant November to March. Planting areas cultivated 150 mm deep and stone pickled of material greater than 50mm. Plant material planted 300 x 300 x 200 minimum. Approved planting compost incorporated into the soil during planting.

Backfill mix: Enmag P4 Compost, Shrubs 35g 5g 10 litres, Extra Heavy Standard 75g 50g 75 litres. Backfill mix (30%) incorporated into topsoil (70%) during planting.

TREE STAKING: Extra Heavy Standard - Short Double Staking. Preserved softwood 100mm min diameter. Driven vertically 450mm into base of pit on either side. Cross bar - timber, as stake. Secured with rubber J Tom's 37.5mm wide standard nylon reinforced rubberref L2 ties including rubber spacer pads ref L1.

Extra Heavy Standard - Underground anchoring. As supplied by www.platipus-anchoring.co.uk. Tel: 01737 762300. Size: RP1 - HS 7-22cmØ 2-4.5mH.

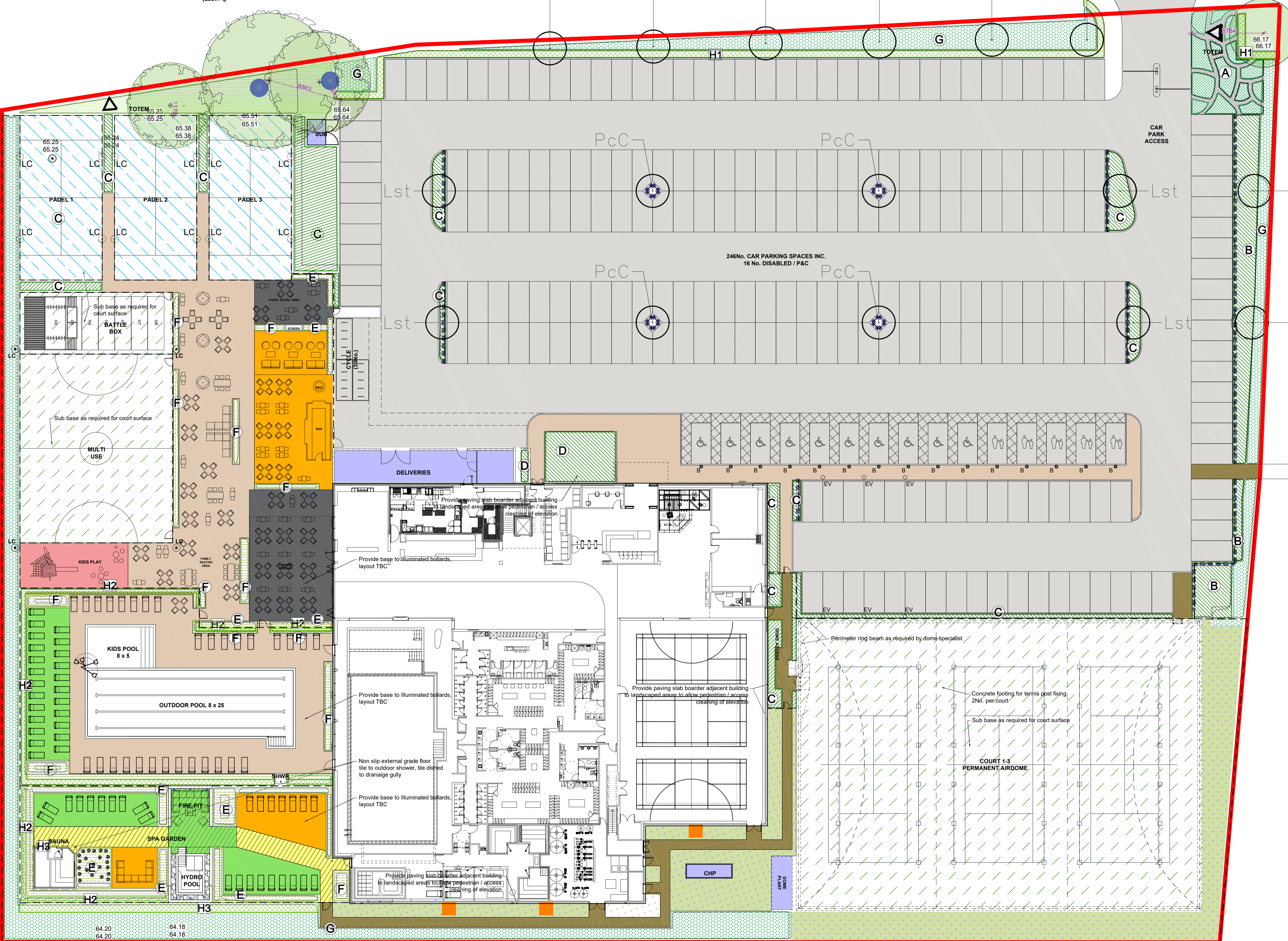
MULCH: Total cover coarse bark mulch to shrub areas, Melcourt Bark Nuggets 75mm deep.

GEOTEXTILE: Geotextile beneath mulch within Spa and Terrace garden, pinned down and planting through cross cuts.

AFTERCARE: 24 months aftercare by planting contractor. Including grass and meadow cutting, weed, pest and disease control, pruning and watering. Weed control by residual herbicide or hand weeding as necessary to achieve a weed free condition. Watering in periods of drought to ensure establishment and continued thriving of planting.

DEFECTS LIABILITY: Twenty-four months on plant material and grass. Replacements in November in year of loss.

ONGOING MAINTENANCE: Continue to maintain for five years from completion of planting by hand weeding and spot treatment of weed killer to any weed in planted areas until plants close canopy. Replace failures for 5 years.



- RED LINE SITE AREA 4.1 acres. KEY: GENERAL VEHICULAR, PLANT DELIVERY AREA, COURTS - Tennis, PEDESTRIAN ZONES, PAVING SLABS, DECKING, KIDS PLAY, COURT 1-3 PERMANENT AIRDOME, LIGHTING, Kneepail.

246 No. CAR PARKING SPACES INC. 16 No. DISABLED / P&C. Provide paving slab boarder adjacent building to landscaped areas to allow pedestrian access, cleaning of elevation. Provide base to illuminated bollards, layout TBC. Non slip external grade floor tile to outdoor shower, tile drained to drainage gully. Provide paving slab boarder adjacent building to landscaped areas to allow pedestrian access, cleaning of elevation. Concrete footing for tennis post fixing 2No. per court. Sub base as required for court surface. Perimeter ring beam as required by dome specialist.

REVISION: #, BY: AJ, CHECKED: CM, DATE: 03/09/2021. Planning Issue.

PLANNING David Lloyd CLUBS. CLIENT: CATALYST BICESTER. PROJECT: PROPOSED SURFACING & LANDSCAPE PLAN. DRAWING: TH, DATE: SEPT 2021. SCALE: 1:250 @ A1.

Table with columns: Name, Code, Height, Root Zone, Specification, Min., Max., Qty. Lists plants for various areas like Site Entrance, Building Entrance, Terrace & Spa Mix 2, etc.

Table with columns: Name, Code, Height, Root Zone, Specification, Min., Max., Qty. Lists trees for various areas like Site Entrance, Building Entrance, Terrace & Spa Mix 2, etc.

IMPLEMENTATION PROGRAMME: First planting season following construction. LANDSCAPE MANAGEMENT: Site Owner to implement 5-year management plan to cover the following regular, seasonal and annual maintenance operations. Tree: Water monthly April to September in periods of drought. Understorey: Apply mulch to encourage good growth and shade. Following strong winds, re-tilt base and check tree stakes for stability. Check tree stakes on new tree planting and replace/adjust/replace as necessary. Apply slow release fertilizer to base of each tree. Dig per new tree. - Actual, Max-Apr. Remove: Water monthly April to September in periods of drought. Remove dead plants. Prune: Prune dead plants. Prune planting area of all signage and signs. Prune dead hedges once annually. Firm up rocked plants. Check for any occurrence of Japanese Knotweed. Mulch: Mulch annually in spring and autumn. Remove: Remove litter. Plant: Plant any dead plants in following planting season (Nov - Mar).