

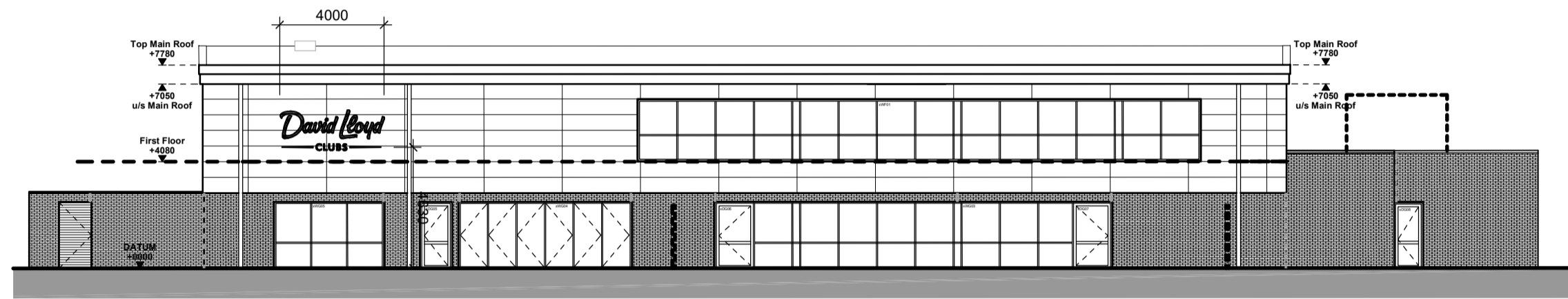
SIGN A ELEVATION - 1:200

Sign A Lumen Calculation - Only the bronze letters / characters illuminate

- The upper box section of the sign is fitted with approximately 40 LED modules
- The lighting does not penetrate through the signface but is a halo around the perimeter of each letter/character.
- Therefore approximate light output per letter 35 lumens. Which equals ~476cd in total over the whole panel
- The face of each letter/character being black does not transmit light
- The light is reflected through acrylic and angled through 90 degrees so the light output is ~76cd/m2 in total over the whole sign area.



PROPOSED SIGN A DETAILS



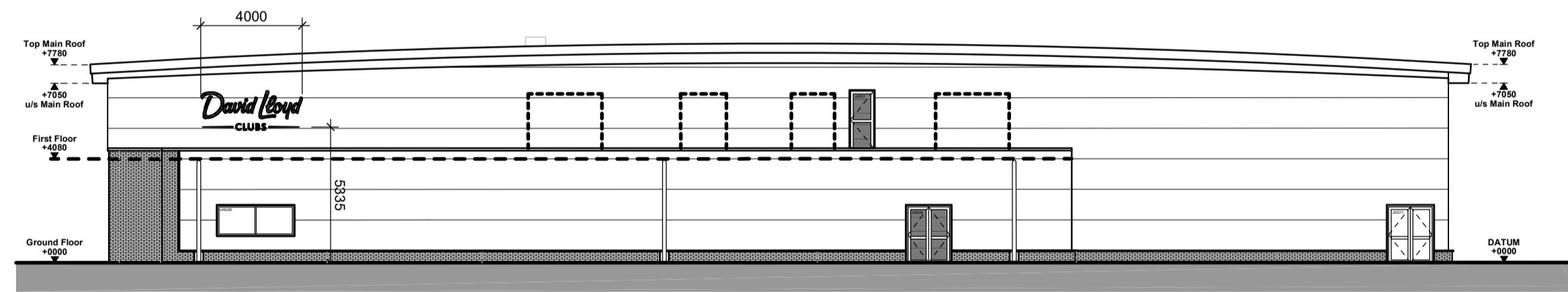
SIGN B ELEVATION - 1:200

Sign B Lumen Calculation - Only the bronze letters / characters illuminate

- The upper box section of the sign is fitted with approximately 40 LED modules
- The lighting does not penetrate through the signface but is a halo around the perimeter of each letter/character.
- Therefore approximate light output per letter 35 lumens. Which equals ~476cd in total over the whole panel
- The face of each letter/character being black does not transmit light
- The light is reflected through acrylic and angled through 90 degrees so the light output is ~76cd/m2 in total over the whole sign area.



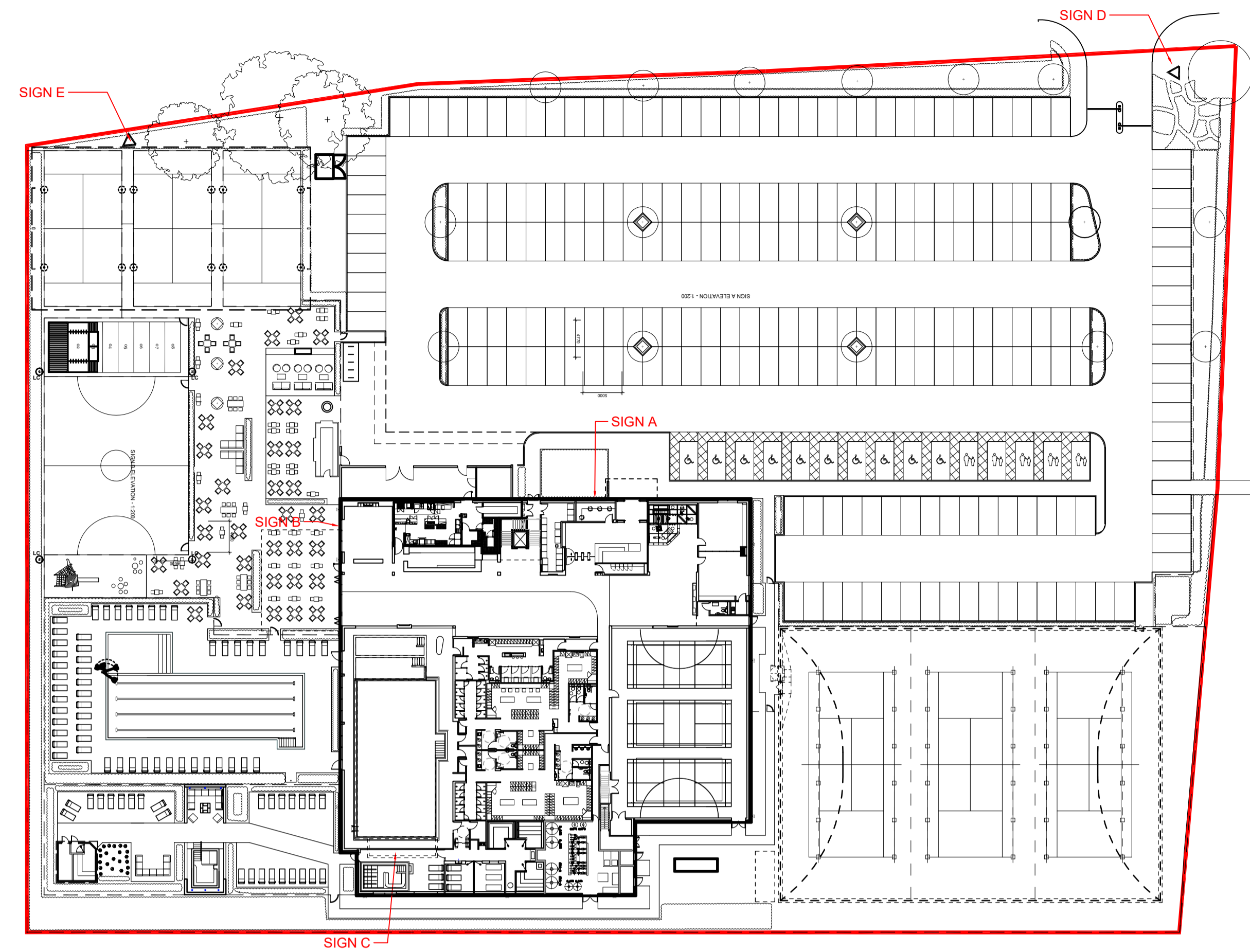
PROPOSED SIGN B DETAILS



Sign C Lumen Calculation - Only the bronze letters / characters illuminate

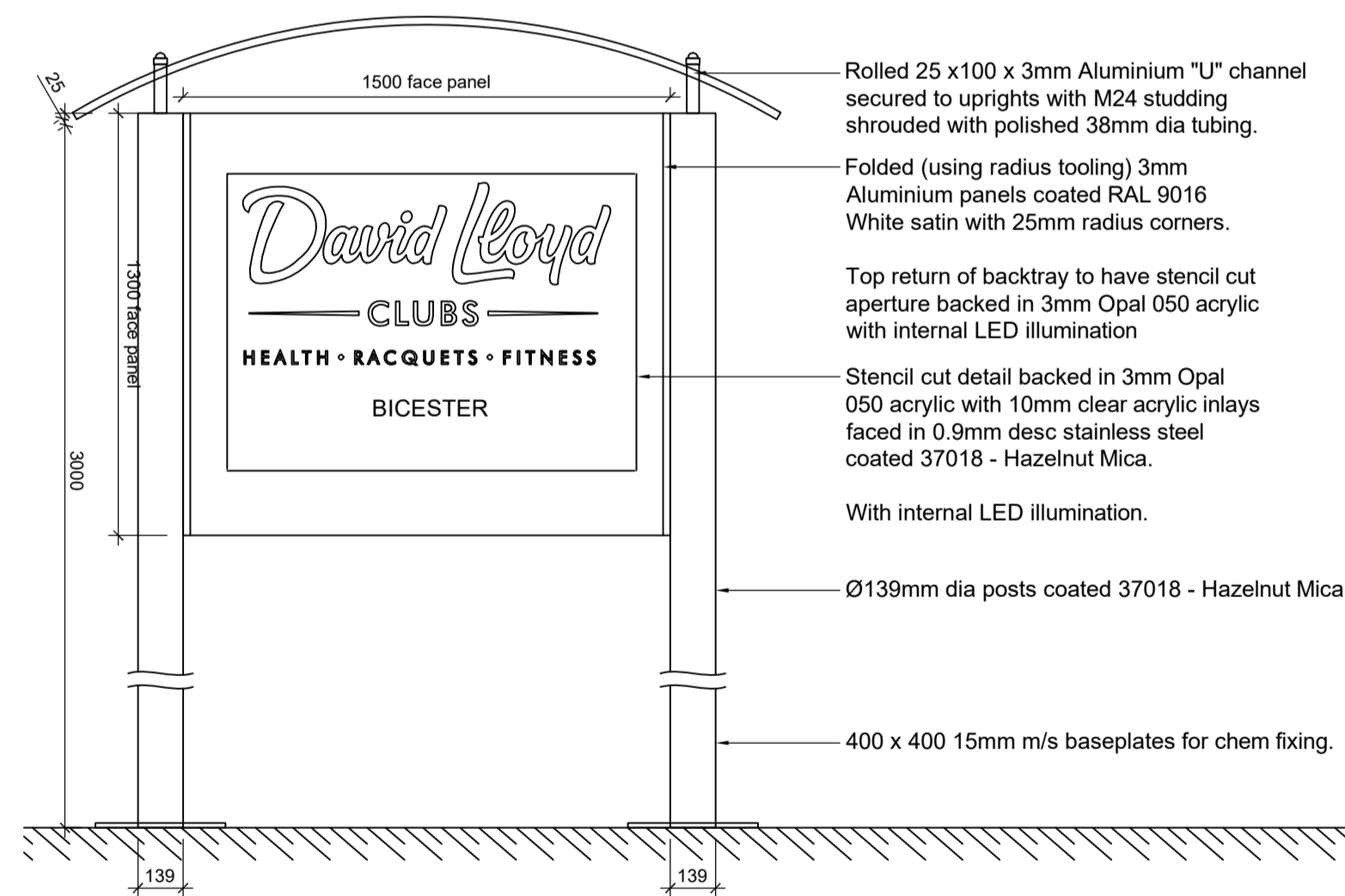
- The upper box section of the sign is fitted with approximately 40 LED modules
- The lighting does not penetrate through the signface but is a halo around the perimeter of each letter/character.
- Therefore approximate light output per letter 35 lumens. Which equals ~476cd in total over the whole panel
- The face of each letter/character being black does not transmit light
- The light is reflected through acrylic and angled through 90 degrees so the light output is ~76cd/m2 in total over the whole sign area.

PROPOSED SIGN C DETAILS

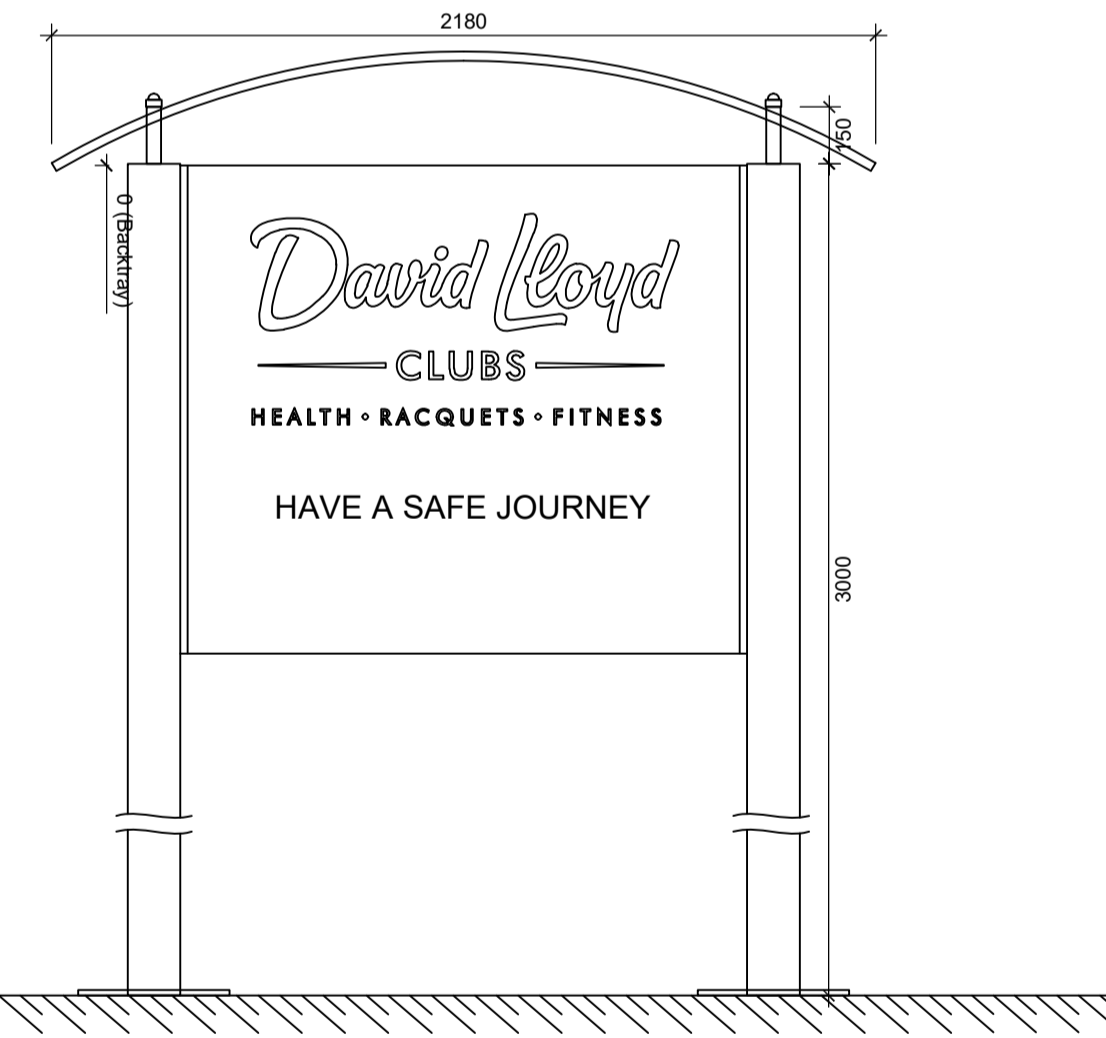


PROPOSED SITE PLAN - 1:500

A - Face view of both front panels - 1:20

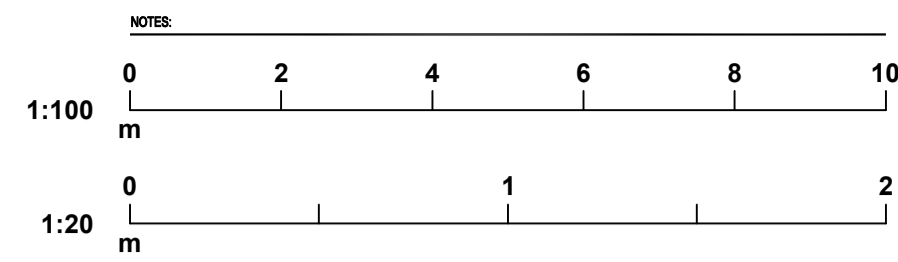
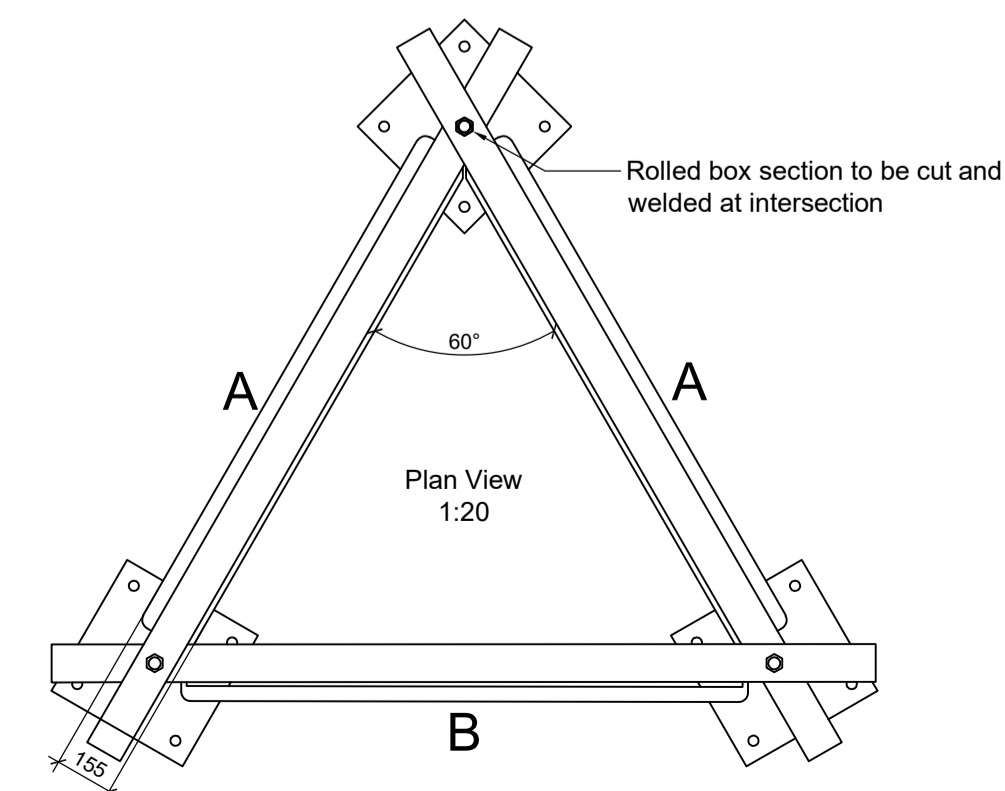


B - Rear view of the totem - 1:20 Facing towards club car park as cars exit



- Illumination**
- Static internal illumination to face of sign controlled in line with other club lighting circuits operating when dark between the hours of 6.30 am and 11.00pm when the club is open.
- Lumen Calculation**
- LED fitted to inside of aluminium sign trays allowing a halo effect around the outer edge of each letter and logo element resulting in a halo glow illumination effect. The output from the light is 128 lumens which is then diffused through an opal cover to only illuminate the face of the aluminium sign panel
 - The light is reflected from the sign face so the light output is 84cd/m2 over the whole sign area.

PROPOSED SIGN D/E DETAILS



REVISION P0 BY: JAH CHECKED: CM DATE: 02/09/2021
Initial Issue

PLANNING

PLANNING



CLIENT: CATALYST BICESTER

PROJECT: PROPOSED INDICATIVE SIGNAGE DETAILS

DRAWING: JAH DATE: 1:200/100/20 @ A1 SEPT 2021

SCALE: 1:200/100/20 @ A1 DATE: SEPT 2021

Hadfield Cawkwell Davidson

Broomgrove Lodge, 13 Broomgrove Rd, Sheffield, S10 2LZ T 0114 266 8181 www.hcd.co.uk

Architecture | Engineering | Interior Design | Masterplanning | Urban Design

2018-260 | A-PL-97-020 | P0