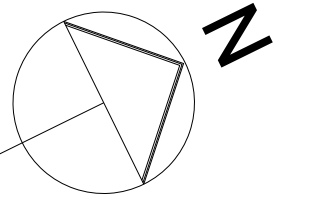


NOTES

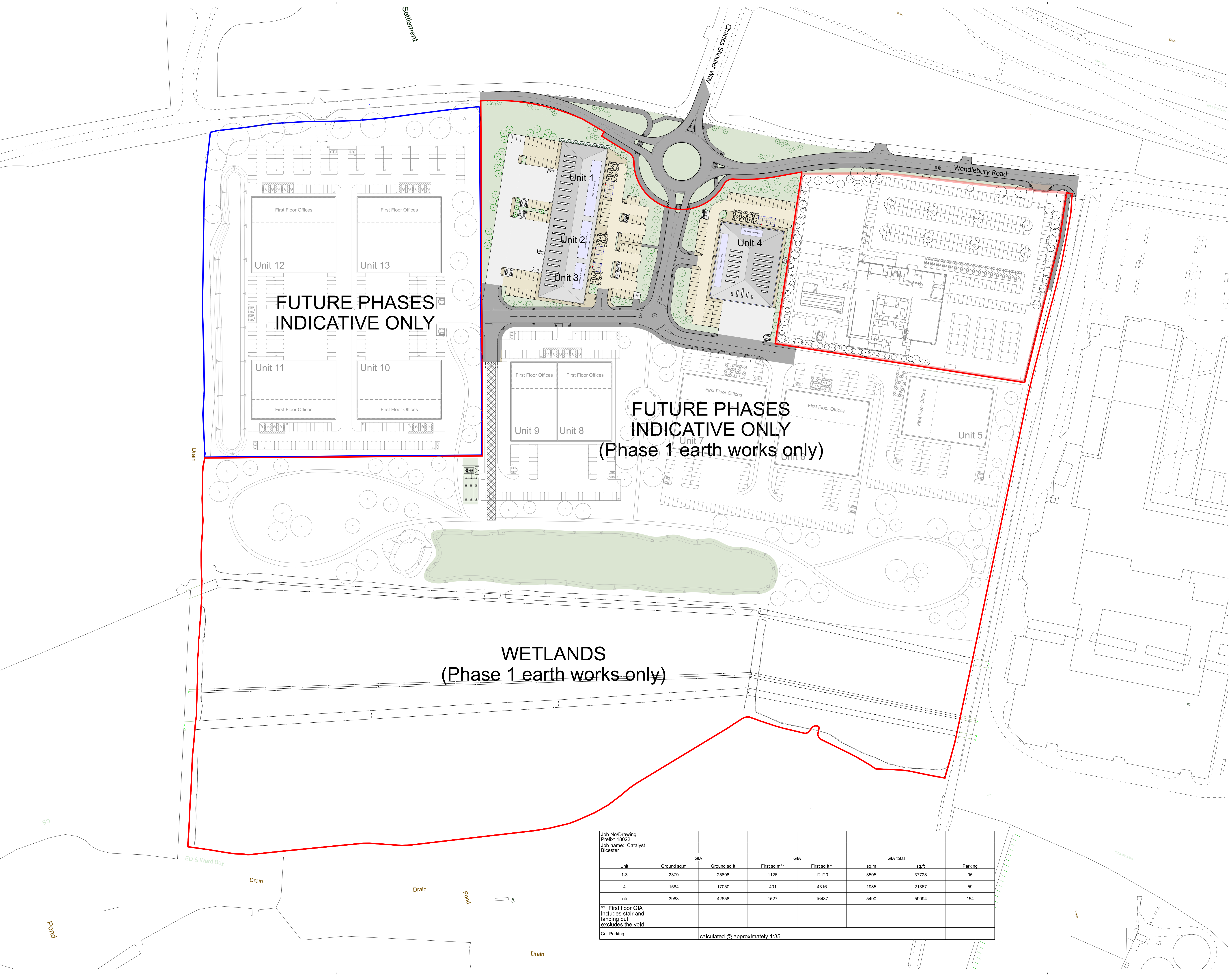
Reproduced from the Ordnance Survey map with the permission of the Controller of Her Majesty's Stationery Office, © Crown Copyright.

C A Cornish & Associates Ltd Licence no LIG0908.

Subject to Statutory Approvals.



- Concrete block paving to parking spaces
- Concrete block paving to parking circulation
- Brushed concrete road/yards
- Concrete block paving to footpaths
- Tarmac
- Bitmac Pavement
- Soft landscape as Reform information
- Trees as Reform Information
- PV array
- Ground-guard or similar (gravel filled)
- EV charging point
- Dropped kerb with tactile paving
- RMA Phase 1 Boundary
- Other Land - Farm site Boundary
- Health & Raquet Club Site



FUTURE PHASES
INDICATIVE ONLY

FUTURE PHASES
INDICATIVE ONLY
(Phase 1 earth works only)

WETLANDS
(Phase 1 earth works only)

D	Curculation footpaths revised to bitmac	SM	21/09/2021
C	Units 1-4 condensers added. Roof plans and areas updated	SM	18/08/2021
B	Footpath access added infront of Units 1-3 and parking spaces rearranged infront of Unit 1 to include a footpath.	CG	30/11/2020
A	Landscaping added infront of Units 1-3 and at entrance to unit 4.	SM	20/11/2020
Rev	Description	Chk	Date

Peer House
8 -14 Verulam Street
London WC1X 8LZ
tel +44(0)20 7400 2120
enquiries@cornisharchitects.com
www.cornisharchitects.com



cornisharchitects

Project Title:
**CATALYST
BICESTER**

Drawing Title:
**PHASE 1 PROPOSED
SITE & FINISHES
PLAN**

Drawing Status:
TOWN PLANNING

Scale:
0 10 metres 80

Drawn By: Scale: Date: Chk'd By:
S M 1:1000 @ A1 29/07/2020 C S

Drawing No. Rev.
18022 - TP - 001 D

Copyright of Cornish Architects ©

Unit	GIA		GIA		GIA total		Parking
	Ground sq.m	Ground sq.ft	First sq.m**	First sq.ft**	sq.m	sq.ft	
1-3	2379	25608	1126	12120	3505	37728	95
4	1584	17050	401	4316	1985	21367	59
Total	3963	42658	1527	16437	5490	59094	154

** First floor GIA includes stair and landing but excludes the void

Car Parking: calculated @ approximately 1:35