

NOTES

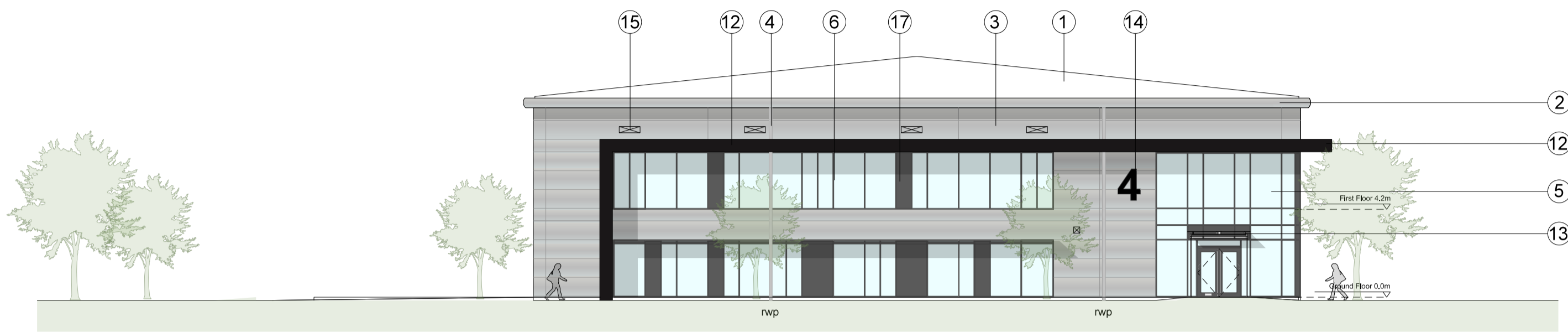
Reproduced from the Ordnance Survey map with the permission of the Controller of Her Majesty's Stationery Office, © Crown Copyright.

C A Cornish & Associates Ltd Licence no LIG0908.

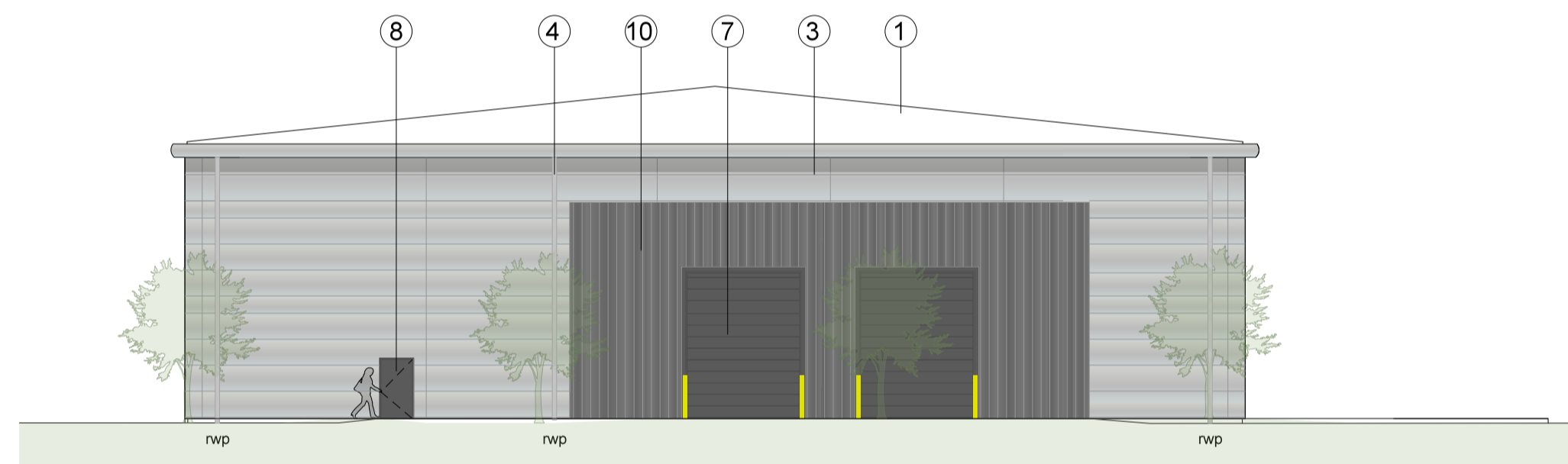
Subject to Statutory Approvals.

KEY

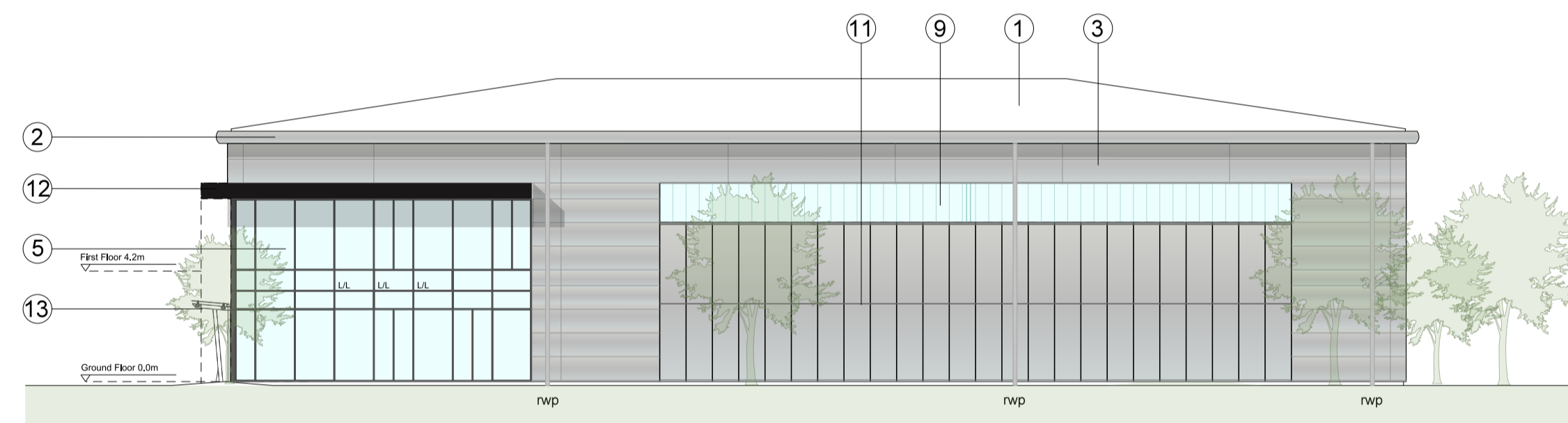
- ① Built-up roof system  
Colour :Goosewing Grey
- ② Eaves and verge flashings, Sirius
- ③ Micro-lined Trimoterm facade profile system  
Colorcoat Prisma - Sirius
- ④ Rainwater pipe, colour: Silver - RAL 9006  
(in Zeus to rainscreen)
- ⑤ PPC Aluminium double glazed curtain  
walling, colour: Anthracite RAL 7016
- ⑥ PPC Aluminium double glazed windows  
Colour: Anthracite RAL 7016
- ⑦ Loading doors, colour: Anthracite RAL 7016
- ⑧ Steel fire escape door, colour: Anthracite RAL 7016
- ⑨ Translucent cladding panel, CA Profiles  
therma-light CF40
- ⑩ Vertical Trapezoidal built-up cladding system -  
Corus Colorcoat Prisma - Zeus
- ⑪ PPC Rainscreen, Colour Silver - Syntha Pulvin  
9006 XDLA 489
- ⑫ Feature canopy, colour: Black - Ral 9005
- ⑬ Etched glass canopy supported off a steelwork  
frame, colour: Anthracite RAL 7016
- ⑭ Proposed signage zone
- ⑮ Louvres - colour to match cladding  
(to M&E consultant specification)
- ⑯ Brise soleil - colour: Anthracite RAL 7016
- ⑰ Decorative coloured glass feature  
insulated cassettes
- L Look-a-like panels - obscured glass



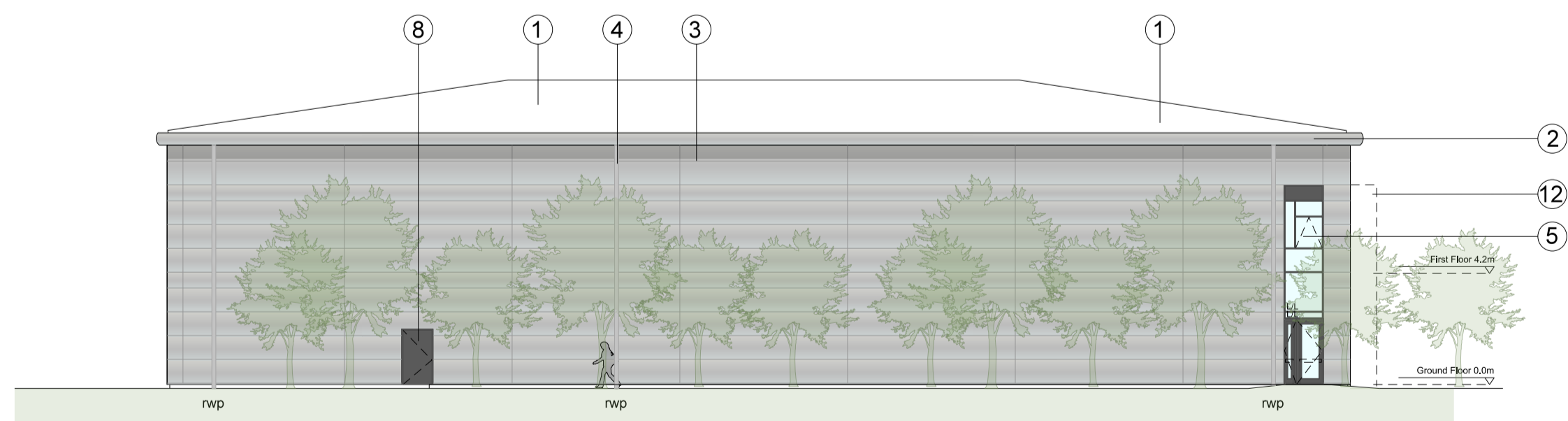
01 UNIT 4  
006 front elevation



02 UNIT 4  
006 rear elevation



03 UNIT 4  
006 side elevation



04 UNIT 4  
006 side elevation

Rev	Description	Chk	Date
A	Curtain walling updated to suit internal layout, escape stair exit door updated	SM	18/08/2021

Peer House  
8 -14 Verulam Street  
London WC1X 8LZ

tel +44(0)20 7400 2120

enquiries@cornisharchitects.com  
www.cornisharchitects.com

RIBA  
Chartered Practice

cornisharchitects

Project Title.  
**CATALYST  
BICESTER**

Drawing Title.  
**UNIT 4  
ELEVATIONS**

Drawing Status.  
**TOWN PLANNING**

Scale.  
0 2 metres 16

Drawn By: Scale: Date: Chk'd By:  
C S 1:200 @ A1 09/07/2020 S M

ALBION LAND

Drawing No. 18022 - TP - 006 Rev. A