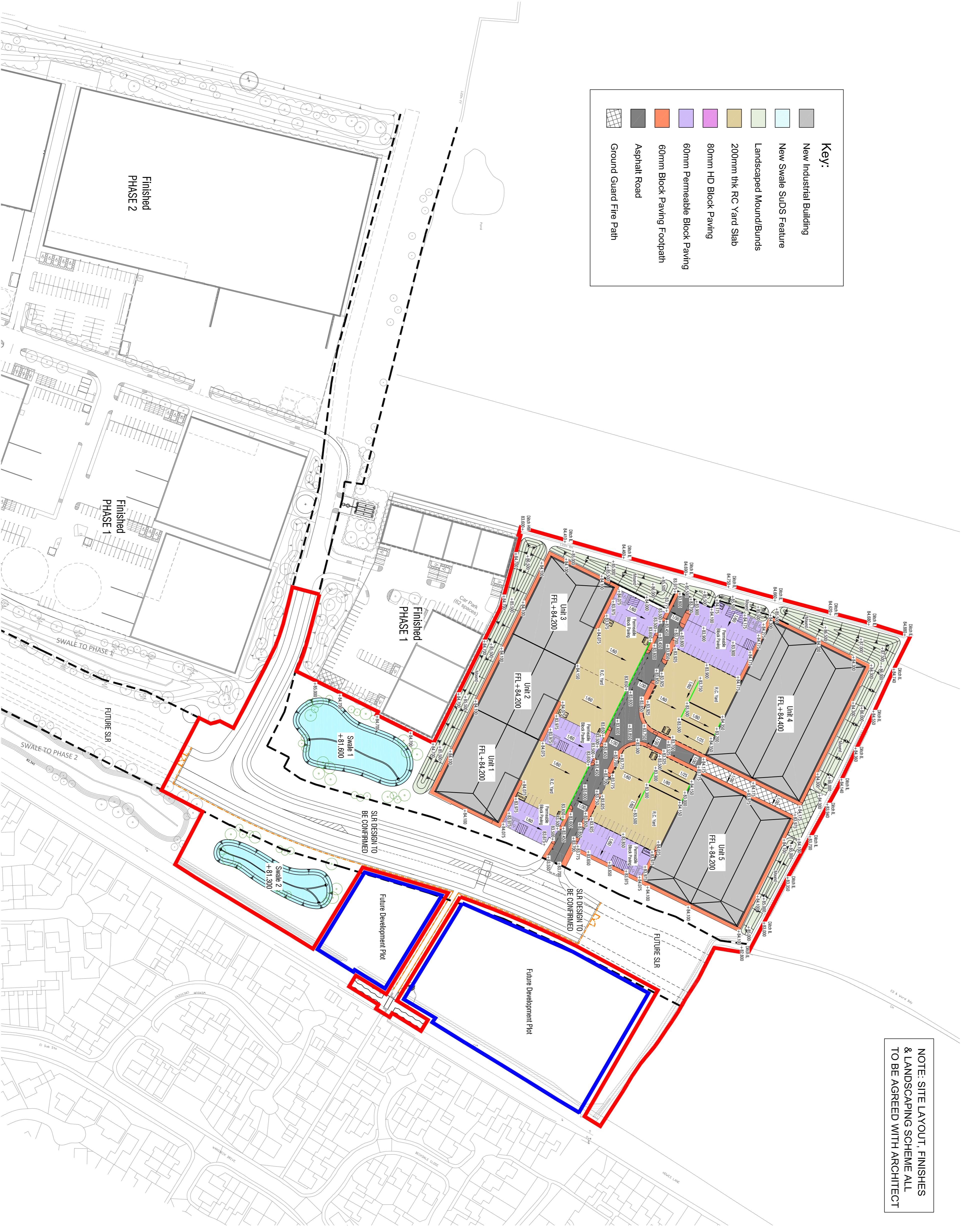


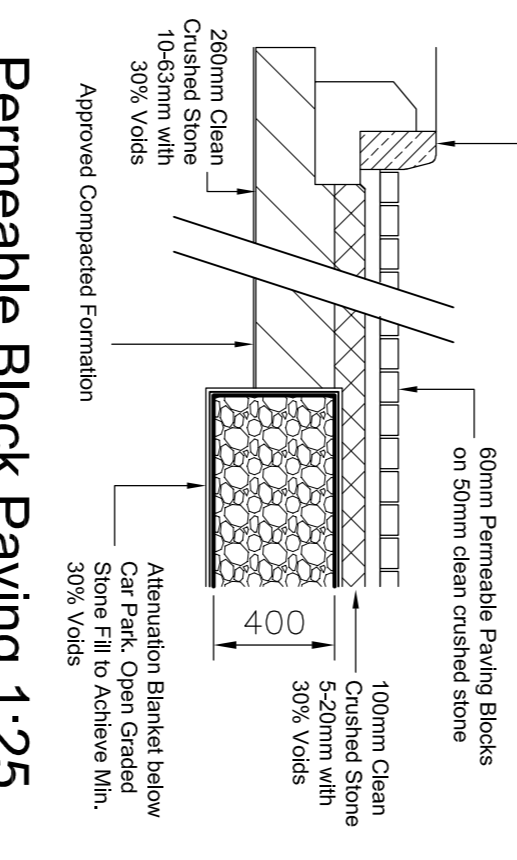
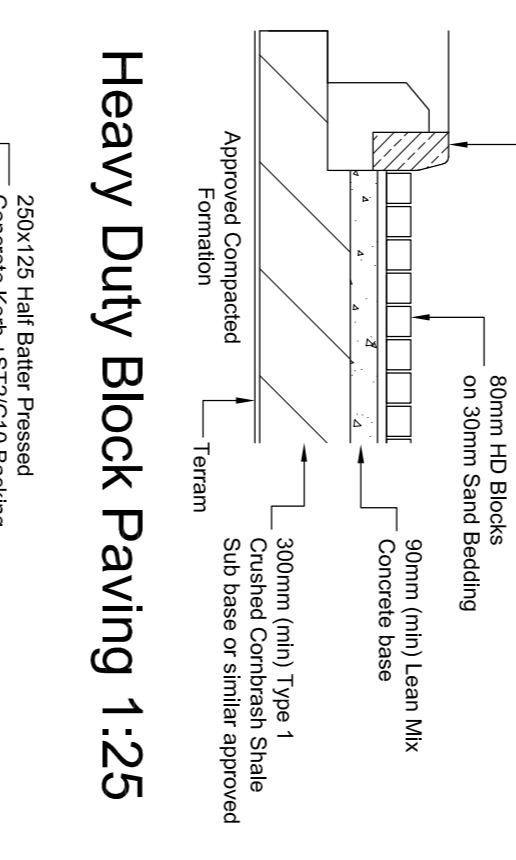
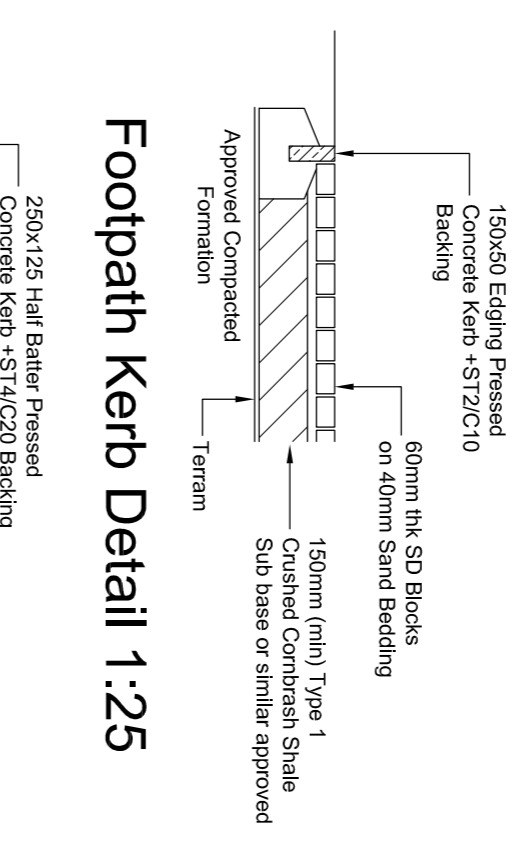
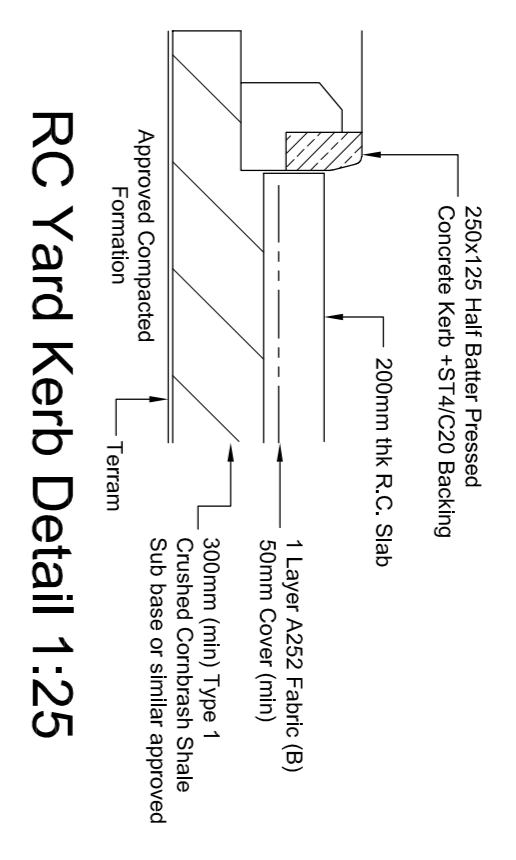
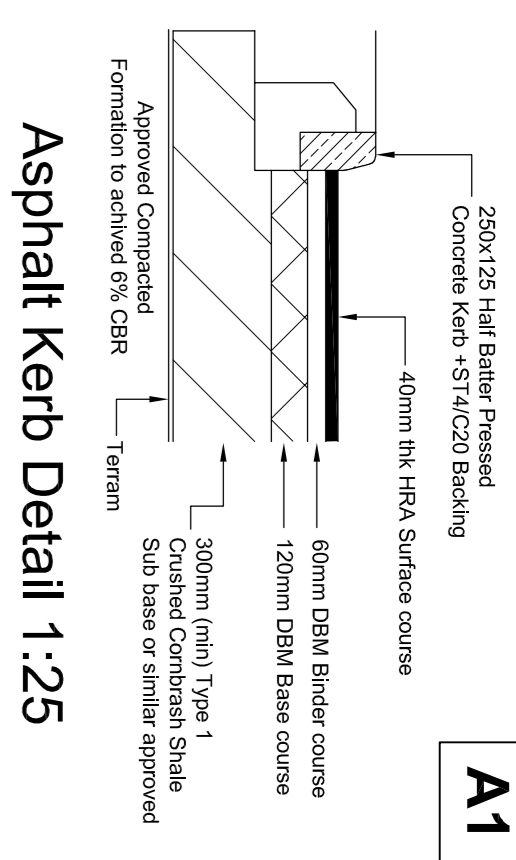
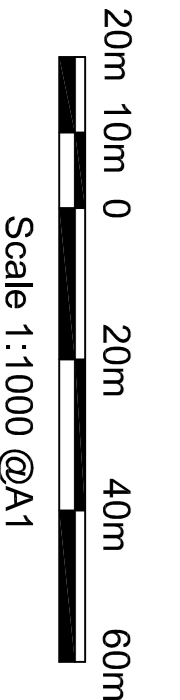
NOTE: SITE LAYOUT, FINISHES & LANDSCAPING SCHEME ALL TO BE AGREED WITH ARCHITECT

Key:

- New Industrial Building
- New Swale SUDS Feature
- Landscaped Mound/Bunds
- 200mm thk RC Yard Slab
- 80mm HD Block Paving
- 60mm Permeable Block Paving
- 60mm Block Paving Footpath
- Asphalt Road
- Ground Guard Fire Path



Phase 3 External Works & Levels 1:1000



TOWN PLANNING

Rev	DATE	REVISION DESCRIPTION
F	29.06.22	Boundary Updated
E	22.04.22	Updated to LLFA planning comments
D	07.03.22	Updated to latest planning scheme.
C	07.01.22	Updated to LLFA planning comments
B	02.09.21	Red line planning boundary adjusted

Revision Schedule

Project Title: **Axis J9 - Bicester**



PHASE 3 External Works & Levels

BAILEY JOHNSON HAYES Consulting Engineers
 ST ALBANS: Suite 4, Phoenix House, 63 Cornhill Rd, ST ALBANS, Herts AL1 5PL
 MANCHESTER: George House, 240 Oldham Street, MANCHESTER, M2 6JY

Scale: 1:1000, 25 @A1
 Date: 20.07.21
 Drawing Number: S1209-PH3-04 F
 Drawn: JNG