

NOTES

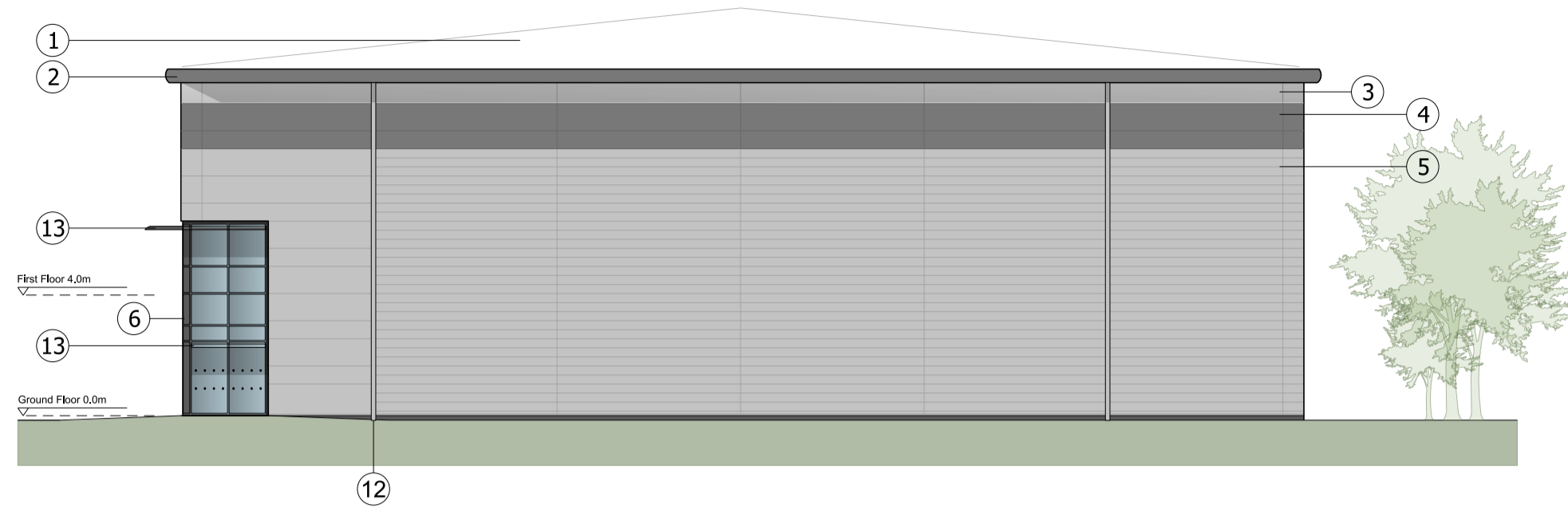
Reproduced from the Ordnance Survey map with the permission of the Controller of Her Majesty's Stationery Office, © Crown Copyright.

C A Cornish & Associates Ltd Licence no LIG0908.

Subject to Statutory Approvals.

KEY

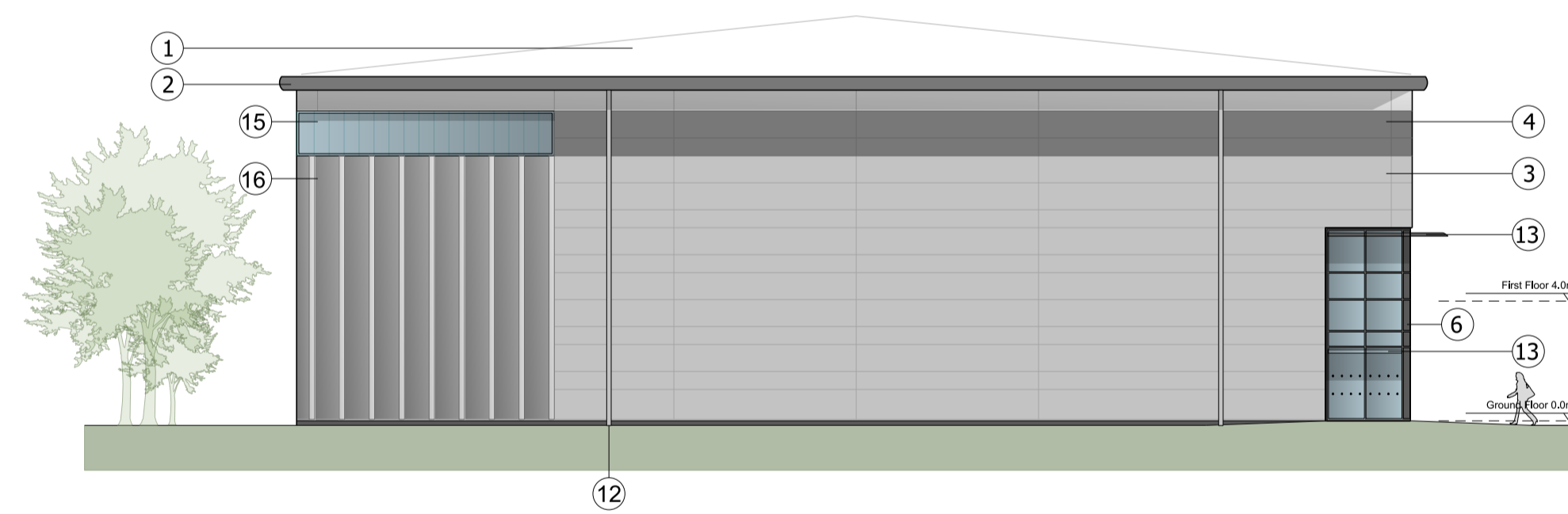
- ① Built-up roof system
Colour: Goosewing Grey
- ② Eaves and verge flashings. Colour: Zeus
- ③ Micro-lined rock fibre composite panel system
Colorcoat Prisma - Sirius
- ④ Feature-band Micro-lined rock fibre composite panel system. Colorcoat Prisma - Zeus
- ⑤ Horizontal Trapezoidal built-up cladding system - Colorcoat Prisma - Sirius
- ⑥ PPC Aluminium double glazed curtain walling, colour: Anthracite RAL 7016
- ⑦ PPC Aluminium double glazed windows with Brise Soleil. Colour: Anthracite RAL 7016
- ⑧ Loading door, colour: Anthracite RAL 7016
- ⑨ Steel fire escape door, colour: Anthracite RAL 7016
- ⑩ Glass canopy supported off RAL 7016 steelwork frame
- ⑪ Proposed signage zone
- ⑫ Rainwater pipe, colour: Silver - RAL 9006
- ⑬ Brise Soleil. Colour: Anthracite RAL 7016
- ⑭ Louvres - colour to match cladding (to M&E consultant specification)
- ⑮ Translucent cladding panel
- ⑯ PPC Rainscreen feature cladding system (Colour Zeus) with projecting fins (Colour: Sirius)
- Look-a-like panels - obscured glass



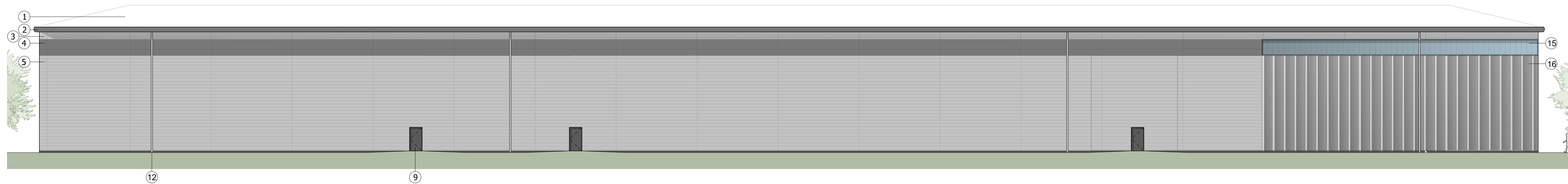
NORTH WEST ELEVATION



NORTH EAST ELEVATION



SOUTH EAST ELEVATION



SOUTH WEST ELEVATION

D	Rainscreen to south west elevation extended	CS	04/03/2022
C	Cladding description updated	CS	02/09/2021
B	Key updated.	SK	20/08/2021
A	Loading door and escape door locations updated. Curtain walling adjusted. Labels and key added.	SK	29/07/2021

Rev	Description	Chk	Date
-----	-------------	-----	------

Peer House
8 -14 Verulam Street
London WC1X 8LZ

tel +44(0)20 7400 2120

enquiries@cornisharchitects.com
www.cornisharchitects.com

RIBA
Chartered Practice

cornisharchitects

Project Title:
PHASE 3 AXIS J9 BICESTER

Drawing Title:
UNITS 1-3 ELEVATIONS

Drawing Status:
TOWN PLANNING

Scale:
0 2 metres 16

Drawn By:	Scale:	Date:	Chk'd By:
S K	1:200 @ A1	19/07/2021	C S

ALBION LAND

Drawing No. **20019 - TP - 008** Rev. **D**