

All heads to receive 2nd cavity tray with weep holes over head plus one weep hole either side of lintel

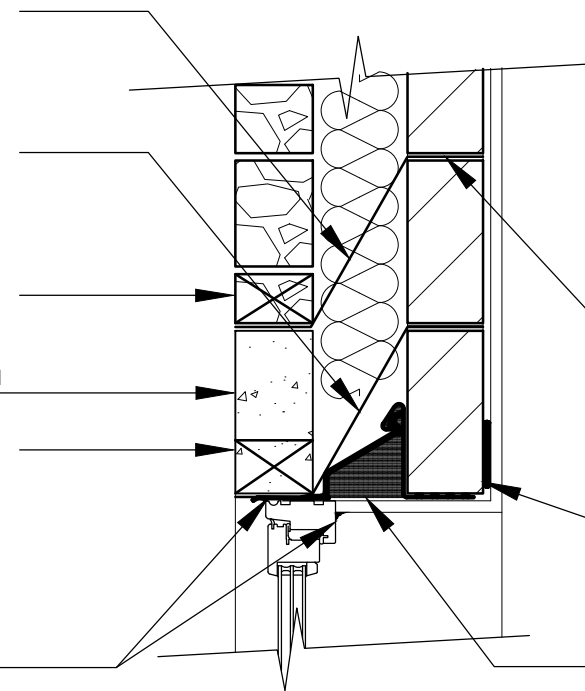
Cavity trays must have a minimum upstand of 140mm and stop ends. Tray to extend a min. 150mm past lintel.

Weep holes @ 450mm centres to the length of the opening. Min 2 per opening

Stone head. Stone color as specified on E.M.S

Weep holes @ 450mm centres to the length of the opening. Min 2 per opening

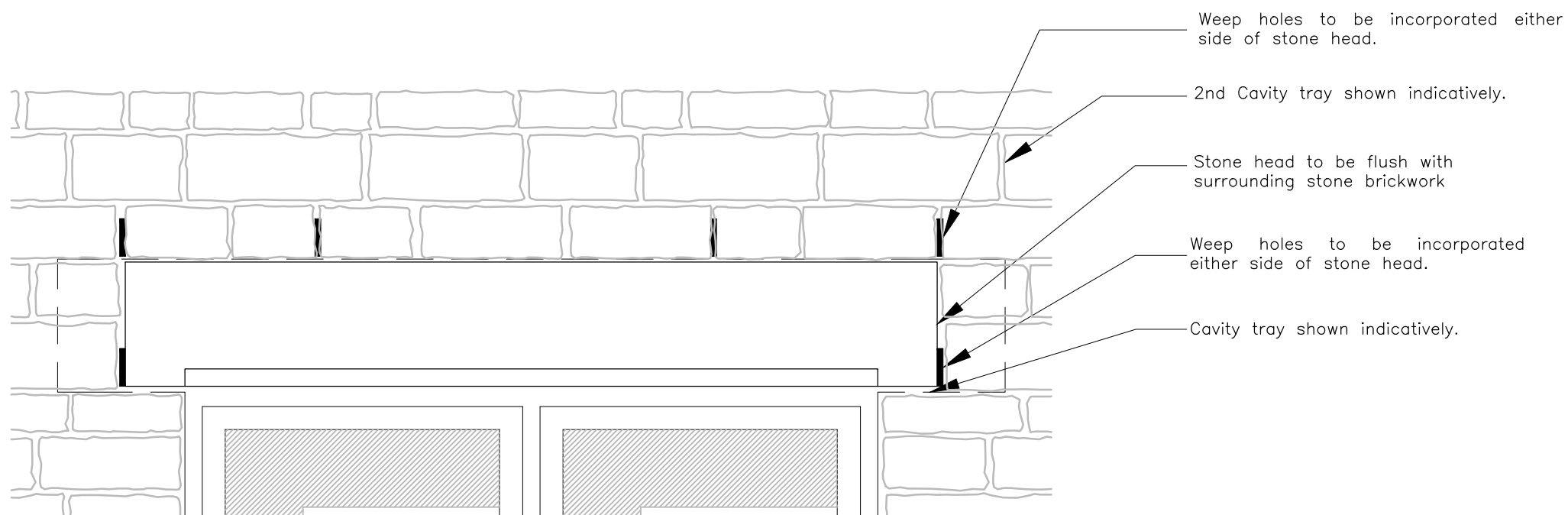
Sealant to front and back of frame



Masonry joint reinforcement in cs above heads as specified by Engineers- minimum in 2 course extend 600mm past opening

Continuous ribbon of adhesive to top and bottom of wall, around all openings and at internal/external corners. Over openings, at least 2 weep holes spaced at a maximum of 450mm to be incorporated

Lintel to Engineers recommendations



Weep holes to be incorporated either side of stone head.

2nd Cavity tray shown indicatively.

Stone head to be flush with surrounding stone brickwork

Weep holes to be incorporated either side of stone head.

Cavity tray shown indicatively.

NOTES:	
1.1	DO NOT SCALE FROM THIS DRAWING
1.2	ALL DIMENSIONS ARE IN MM UNLESS OTHERWISE SPECIFIED

REVISION	DESCRIPTION	INITIALS	DATE



RECTORY LTD RECTORY HOUSE THAME ROAD  
HADDENHAM, AYLESBURY, BUCKINGHAMSHIRE, HP17 8DA  
T: 01844 295100 F: 01844 295350 www.rectory.co.uk

PROJECT:			
SOUTH SIDE STEEPLE AASTON			
DRAWING:			
STONE HEAD DETAIL			
DEPARTMENT:	DRAWN BY:	CHECKED BY:	
TECHNICAL	GL		
DRAWING No:	SCALE:	PAPER:	REV:
P.224.02.101	1:10	A3	-
STATUS:	DATE:		
PROPOSED	09.03.21		

THIS DRAWING IS THE PROPERTY OF RECTORY HOMES LIMITED AND MAY NOT BE COPIED, LENT, REPRODUCED OR DISCLOSED WITHOUT THEIR WRITTEN PERMISSION