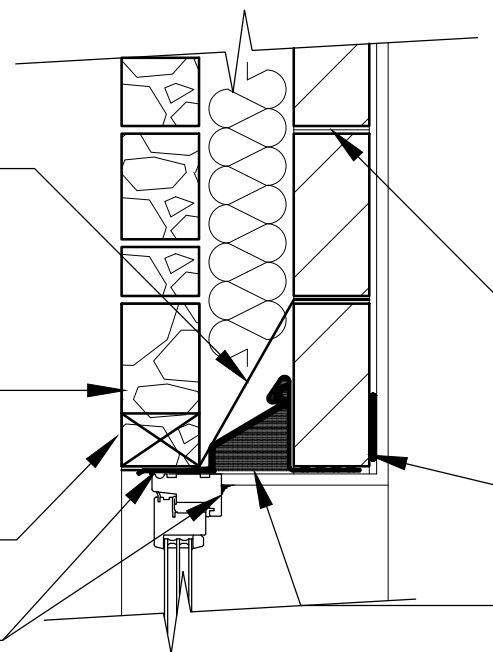


Cavity trays must have a minimum upstand of 140mm and stop ends. Tray to extend a min. 150mm past lintel.

Row of matching stone forming soldier course to window head, stone to be flush with surrounding stone work (Non Structural)

Weep holes @ 450mm centres to the length of the opening. Min 2 per opening

Sealant to front and back of frame



Masonry joint reinforcement in cs above heads as specified by Engineers- minimum in 2 course extend 600mm past opening

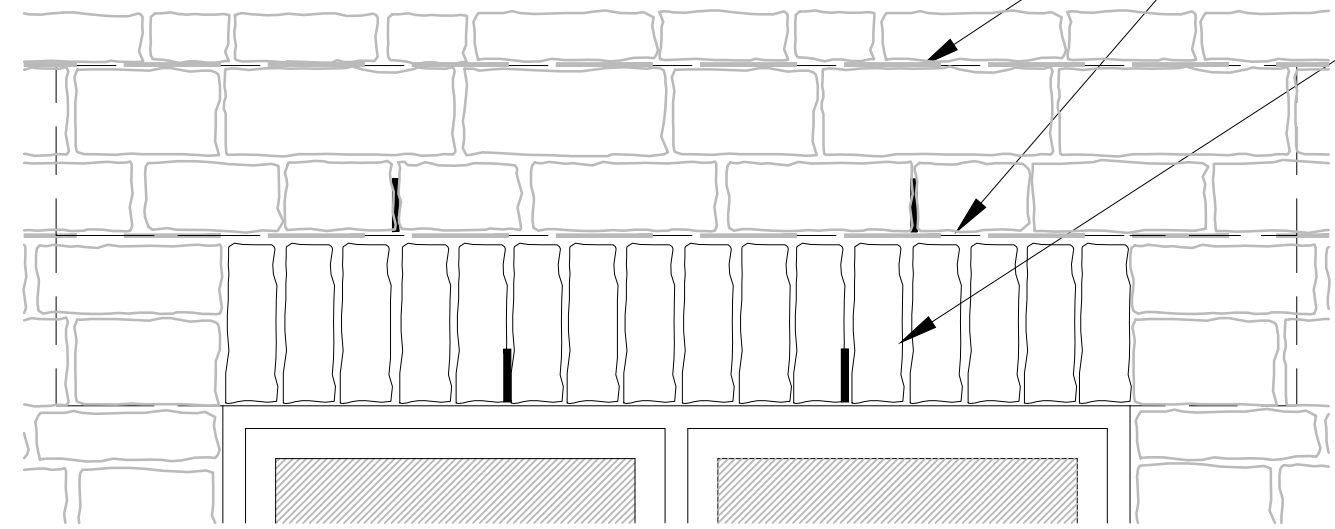
Continuous ribbon of adhesive to top and bottom of wall, around all openings and at internal/external corners. Over openings, at least 2 weep holes spaced at a maximum of 450mm to be incorporated

Lintel to Engineers recommendations

Inner leaf Blockwork reinforcement shown - extend 600mm past opening either side.

stone soldier course to be flush with surrounding stone

Over openings, at least two weep holes spaced at a maximum of 450mm to be incorporated.



NOTES:

1.1 DO NOT SCALE FROM THIS DRAWING

1.2 ALL DIMENSIONS ARE IN MM UNLESS OTHERWISE SPECIFIED

REVISION	DESCRIPTION	INITIALS	DATE



RECTORY LTD RECTORY HOUSE THAME ROAD  
 HADDENHAM, AYLESBURY, BUCKINGHAMSHIRE, HP17 8DA  
 T: 01844 295100 F: 01844 295350 www.rectory.co.uk

PROJECT:			
SOUTH SIDE STEEPLE AASTON			
DRAWING:			
BUILDING STONE HEAD DETAIL			
DEPARTMENT:	DRAWN BY:	CHECKED BY:	
TECHNICAL	GL		
DRAWING No:	SCALE:	PAPER:	REV:
P.224.02.102	1:10	A3	-
STATUS:	DATE:		
PROPOSED	09.03.21		

THIS DRAWING IS THE PROPERTY OF RECTORY HOMES LIMITED AND MAY NOT BE COPIED, LENT, REPRODUCED OR DISCLOSED WITHOUT THEIR WRITTEN PERMISSION