

NOTES

- THIS DRAWING SHOWS A GENERAL REPRESENTATION OF THE ELECTRICAL EQUIPMENT. ALL LOCATIONS AND DIMENSIONS TO BE AGREED PRIOR TO FIRST FIX.
- KITCHEN EQUIPMENT POSITIONS TO BE AGREED ON SITE WITH THE KITCHEN SPECIALIST PRIOR TO THE FIRST FIX WORKS COMMENCING.

LEGEND SWITCHES

- DOUBLE SWITCHED SOCKET OUTLET 450mm ABOVE FFL
- DOUBLE SWITCHED SOCKET OUTLET 1050mm ABOVE FFL
- DOUBLE SWITCHED SOCKET OUTLET 1050mm ABOVE FFL CHROME FINISH
- 45 AMP COOKER CONTROL SWITCH.
- 3 AMP BOILER SWITCHED FUSED SPUR.
- SWITCHED FUSED SPUR
- UNSWITCHED FUSED SPUR
- SINGLE UNSWITCHED SOCKET OUTLET
- GRID SWITCH. LOCATED WITHIN HIGH LEVEL KITCHEN WALL UNIT.
- 20A DP CONTROL SWITCH C/W NEON
- TV POINT
- BT POINT (UNLESS SHOWN OTHERWISE)
- DATA POINT RJ45 CAT5e
- MEDIA PANEL**
- 2 No DOUBLE SWITCHED SOCKET OUTLETS
- 1 No TV
- 2 No SAT
- 1 No BT
- 1 No DATA POINT RJ45 CAT5e
- DISTRIBUTION BOARD
- ELECTRICITY METER CUPBOARD
- WALL MOUNTED PROGRAMMABLE HEATING THERMOSTAT
- WIRING CENTER & HOT WATER PROGRAMMER
- ELECTRICAL EARTH BONDING
- MAINS DOOR BELL
- DOOR BELL PUSH
- INTERCOM DOOR ENTRY PANEL
- INTERCOM ENTRY HANDSET
- GTC ONT MEDIA BOX

NOTE: SWITCHED FUSED SPUR TO BE LOCATED UNDER ALL KITCHEN SINKS FOR WATERGUARD SOLO INSTALLATION
UNMARKED LIGHTS/SWITCHES TO BE FINISHED WHITE PLASTIC

LEGEND LIGHTING

- PENDANT LIGHT (WOODEN BATTEN TO BE INSTALLED BEHIND AT FIRST FIX STAGE)
- BATTEN LAMP
- LED DOWN LIGHT
- COMMUNAL LIGHTING WITH EMERGENCY BATTERY BACK UP LINKED TO PIR SENSORS
- DIRECTIONAL LED DOWN LIGHT
- IP RATED LED DOWN LIGHT
- EXTERNAL UP/DOWN LAMP IP RATED.
- ONE GANG 1WAY SWITCH
- ONE GANG 2WAY SWITCH
- TWO GANG 1WAY SWITCH
- TWO GANG 2WAY SWITCH
- INTERMEDIATE SWITCH
- SHAVER SOCKET.
- 3 POLE FAN ISOLATOR
- 5 AMP SOCKET OUTLET
- SINGLE SURFACE MOUNTED FLUORESCENT LUMINAIRE
- PELMET LUMINAIRE
- PLINTH LUMINAIRE
- DENOTES SMOKE ALARM - TO BE SELF CONTAINED, MAINS FED & INTERCONNECTED, TO COMPLY WITH B.S. 5446 PART 1.
- HEAT DETECTOR
- CARBON MONOXIDE ALARM OPERATED. LOCATED 1-3M FROM APPLIANCE
- EXTRACT FAN. LIGHT SWITCH CONTROL WITH RUN-ON TIMER.
- FOUR SPOTLIGHT LIGHTING TRACK

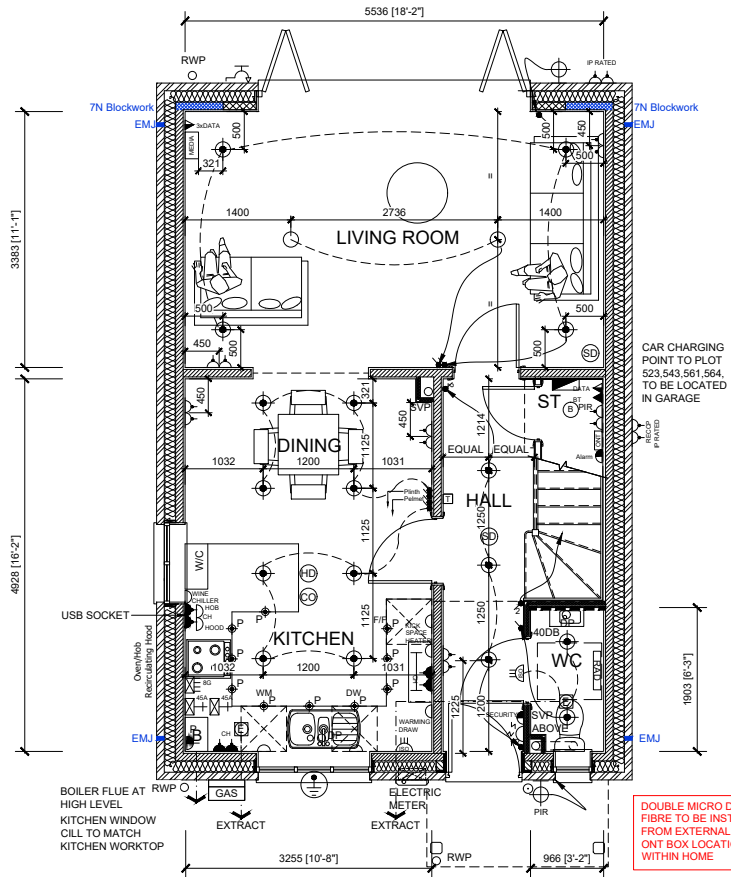
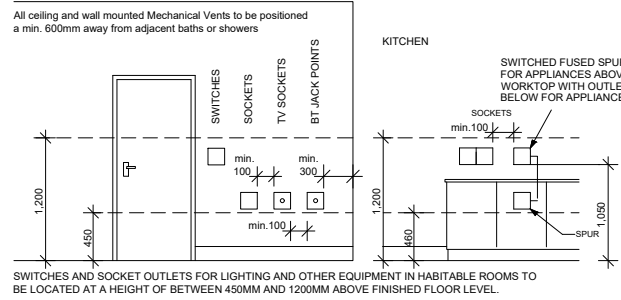
UNMARKED LIGHTS/SWITCHES TO BE FINISHED WHITE PLASTIC

LIGHT FITTINGS, HEAT DETECTOR & EXTRACT FAN WITHIN KITCHEN TO BE EQUALLY SET OUT WITHIN CEILING

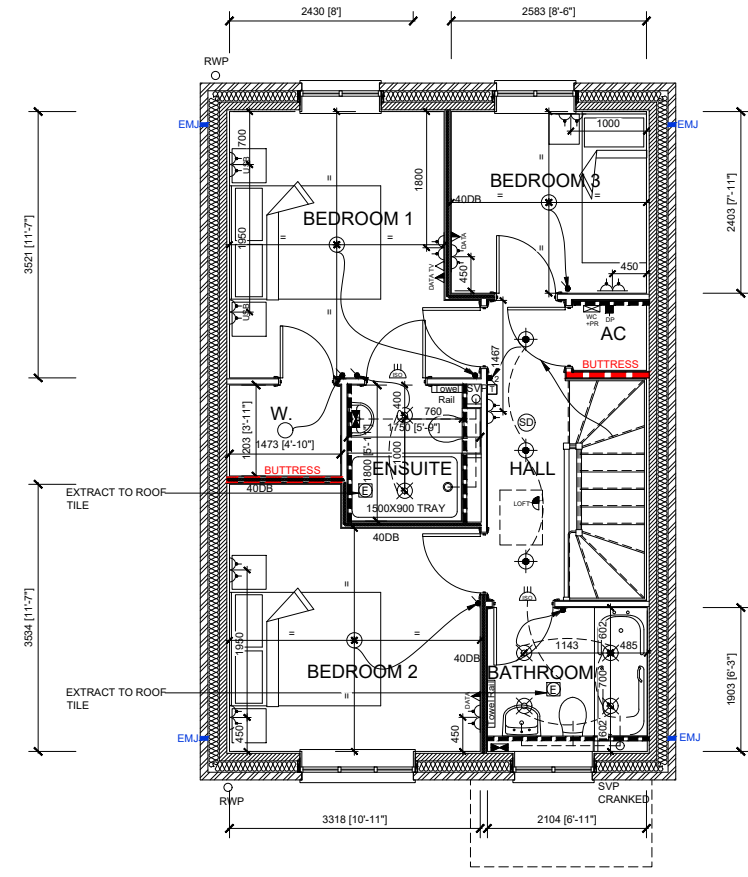
LIGHT FITTINGS TO BE CENTERED WITHIN CEILING AS SETTING OUT

- ALL DRAINAGE RUNS TO BE ABOVE FLOOR UNLESS STATED OTHERWISE.
- ALL KITCHEN LAYOUTS TO SPECIALIST'S DESIGN AND DETAILS
- CONTINUOUS MECHANICAL EXTRACTS ALL EXTRACT DUCTS TO BE WITHIN THE FLOOR / ROOF SPACE UNLESS NOTED OTHERWISE, REFER TO SPECIALIST'S DRAWINGS FOR DETAILS
- WIRING UP TO AND INCLUDING A WEATHERPROOF EXTERNAL BLANKING PLATE SET AT 1M ABOVE GROUND LEVEL IS TO BE PROVIDED WHERE PARKING IS WITHIN THE PLOT CURTILAGE FOR THE FUTURE INSTALLATION OF A VEHICLE CHARGING POINT. REFER TO SITE LAYOUT FOR ACTUAL POSITION OF CHARGING POINT ON SPECIFIC PLOTS.

ELECTRICAL SPACING DIAGRAM:



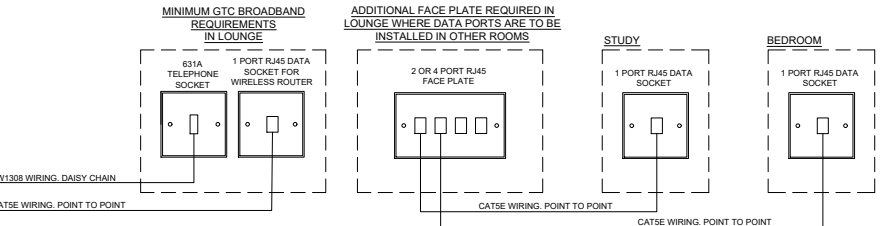
GROUND FLOOR PLAN



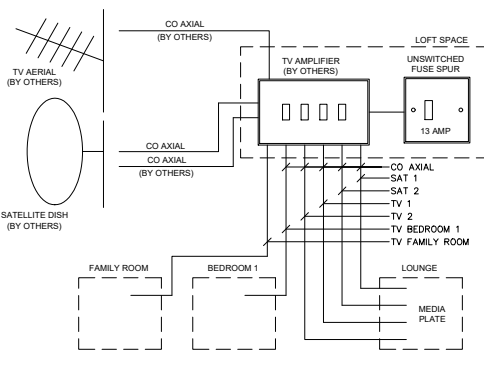
FIRST FLOOR PLAN

NOTES

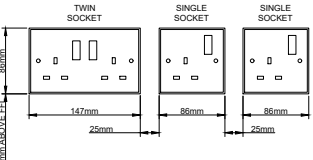
- THE BOX MUST BE MOUNTED SO THAT ITS CENTERLINE IS THE SAME AS THAT OF THE INCOMING SERVICE DUCT THROUGH WHICH THE FIBRE OPTIC WILL BE RUN
- THE COMPLETED ASSEMBLY OF THE BOX, PLATES AND EQUIPMENT MAY WEIGH UP TO 8.5KG. YOU WILL NEED TO ENSURE ADEQUATE FIXINGS ARE USED. WE RECOMMEND AN ADDITIONAL TIMBER STUD IS USED ON PARTITION WALL TO HELP SUPPORT THIS.
- THE BOX MUST BE FIXED SO THE DOOR HINGES ARE ON THE LEFT SIDE.
- 631A SECONDARY SOCKETS FOR TELEPHONE TERMINATIONS.
- TELEPHONE CABLEING IS DAISSY CHAINED FROM MULTIPLE CONNECTION POINTS USING CW1308 BACK TO A SINGLE CONNECTION BELOW THE HOME HUB.
- RJ45 SOCKETS FOR DATA TERMINATIONS.
- DATA CABLEING IS POINT TO POINT USING CAT5E.
- REMEMBER TO LABEL ALL CABLES AND CONNECTIONS CORRECTLY.
- POWER SOCKETS TO BE LOCATED WITHIN 1M OF ALL DATA SOCKETS



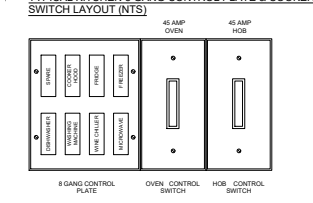
TYPICAL TV DETAIL (NTS)



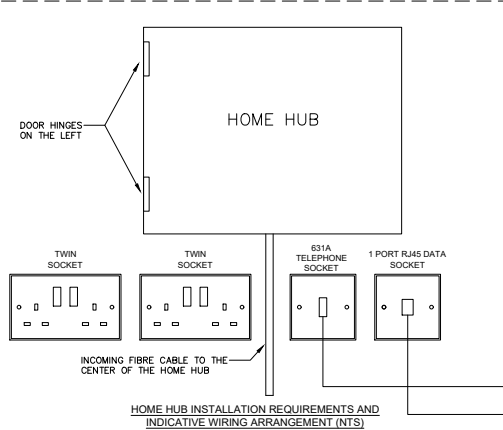
TYPICAL SOCKET LAYOUT (NTS)



TYPICAL KITCHEN 8 GANG CONTROL PLATE & COOKER SWITCH LAYOUT (NTS)



STORE CUPBOARD



PHASE 9A PLOT - (AS) 523
 PHASE 9B PLOTS - (AS) 561,564,602
 - (OPP) 543
 PHASE 9C PLOTS - (AS) 628, 629, 641, 663, 664
 - (OPP) 640
 PHASE 9D PLOTS - (OPP) 671, 681, 682, 726
 PHASE 9E PLOTS - (AS) 759

Revision:	Date:	Description:	By:
C1	19.02.21	Construction Issue	MJR
C2	27.05.21	Data points added to bed rooms	MJR

A1 SHEET

1:50
 0 1m 2m 3m 4m

Client:

Trower Davies
 Architectural Consultants

Site Address: UPPER HEYFORD, PHASE 9
 BICESTER

Drawing Title:
HOUSE TYPE 1 ELECTRICAL SERVICES AND LIGHTING PLANS

Scale: 1:50 @ A1 Date drawn: SEPT 19 Drawn by: MJR

Project Number: 727 Drawing Number: HT1-09-08 Revision: C2

Status: **CONSTRUCTION ISSUE**