

**General Notes**

- This drawing is to be used in conjunction with all relevant drawings, specifications and details.
- All dimensions are in metres unless noted otherwise.
- Do not scale from this drawing.

**General Arrangement Key**

This drawing has been based/developed using the following external drawings

Type	Company	Drawing date	Drawing title	Date received	Rev
Site Layout	K.E. Architecture	25.05.21	"Launton Road, Bicester, OX26 4UJ / Proposed Site Layout Plan / 194.01.05 Rev"	/	-
Topographical survey			Topo taken from within BPL drawing "SITE UTILITIES WITH PROPOSED NEW BUILDINGS / 210.34-30 Rev A" and related, translated, relocated to grid/North.		
OS Data			OS Data taken from within BPL drawing "SITE UTILITIES WITH PROPOSED NEW BUILDINGS / 210.34-30 Rev A" and related, translated, relocated to grid/North.		

For further Section 278 details see IPF drawings:

- 23200 - 200 - General Arrangement, Kerbing & Land Dedication
- 23200 - 201 - Site Clearance & Existing Services
- 23200 - 202 - Traffic Signs And Road Markings & Swept Path Analysis
- 23200 - 203 - Proposed Levels Plan
- 23200 - 204 - 5278 Construction Details

LTN 1/20 Table 5-3: Additional width at fixed objects

Flush or near flush surface including low and splayed kerbs up to 60mm high	No additional width needed
Kerbs 61mm to 150mm high	200
Vertical feature from 151mm to 600mm high	250
Vertical feature above 600mm high	500

This drawing has been based/developed using the following external drawings

Type	Company	Drawing date	Drawing title	Date received	Rev
Site Layout	K.E. Architecture	25.05.21	"Launton Road, Bicester, OX26 4UJ / Proposed Site Layout Plan / 194.01.05 Rev"	/	-
Topographical survey			Topo taken from within BPL drawing "SITE UTILITIES WITH PROPOSED NEW BUILDINGS / 210.34-30 Rev A" and related, translated, relocated to grid/North.		
OS Data			OS Data taken from within BPL drawing "SITE UTILITIES WITH PROPOSED NEW BUILDINGS / 210.34-30 Rev A" and related, translated, relocated to grid/North.		

For further Section 278 details see IPF drawings:

- 23200 - 200 - General Arrangement, Kerbing & Land Dedication
- 23200 - 201 - Site Clearance & Existing Services
- 23200 - 202 - Traffic Signs And Road Markings & Swept Path Analysis
- 23200 - 203 - Proposed Levels Plan
- 23200 - 204 - 5278 Construction Details

LTN 1/20 Table 5-3: Additional width at fixed objects

Flush or near flush surface including low and splayed kerbs up to 60mm high	No additional width needed
Kerbs 61mm to 150mm high	200
Vertical feature from 151mm to 600mm high	250
Vertical feature above 600mm high	500

For further Section 278 details see IPF drawings:

- 23200 - 200 - General Arrangement, Kerbing & Land Dedication
- 23200 - 201 - Site Clearance & Existing Services
- 23200 - 202 - Traffic Signs And Road Markings & Swept Path Analysis
- 23200 - 203 - Proposed Levels Plan
- 23200 - 204 - 5278 Construction Details

LTN 1/20 Table 5-3: Additional width at fixed objects

Flush or near flush surface including low and splayed kerbs up to 60mm high	No additional width needed
Kerbs 61mm to 150mm high	200
Vertical feature from 151mm to 600mm high	250
Vertical feature above 600mm high	500

Vertical feature above 600mm high

Vertical feature above 600mm high

Vertical feature above 600mm high

Vertical feature above 600mm high

Vertical feature above 600mm high

Vertical feature above 600mm high

Vertical feature above 600mm high

Vertical feature above 600mm high

Vertical feature above 600mm high

Vertical feature above 600mm high

Vertical feature above 600mm high

Vertical feature above 600mm high

Vertical feature above 600mm high

Vertical feature above 600mm high

Vertical feature above 600mm high

Vertical feature above 600mm high

Vertical feature above 600mm high

Vertical feature above 600mm high

Vertical feature above 600mm high

Vertical feature above 600mm high

Vertical feature above 600mm high

Vertical feature above 600mm high

Vertical feature above 600mm high

Vertical feature above 600mm high

Vertical feature above 600mm high

Vertical feature above 600mm high

Vertical feature above 600mm high

Vertical feature above 600mm high

Vertical feature above 600mm high

Vertical feature above 600mm high

Vertical feature above 600mm high

Vertical feature above 600mm high

Vertical feature above 600mm high

Vertical feature above 600mm high

Vertical feature above 600mm high

Vertical feature above 600mm high

Vertical feature above 600mm high

Vertical feature above 600mm high

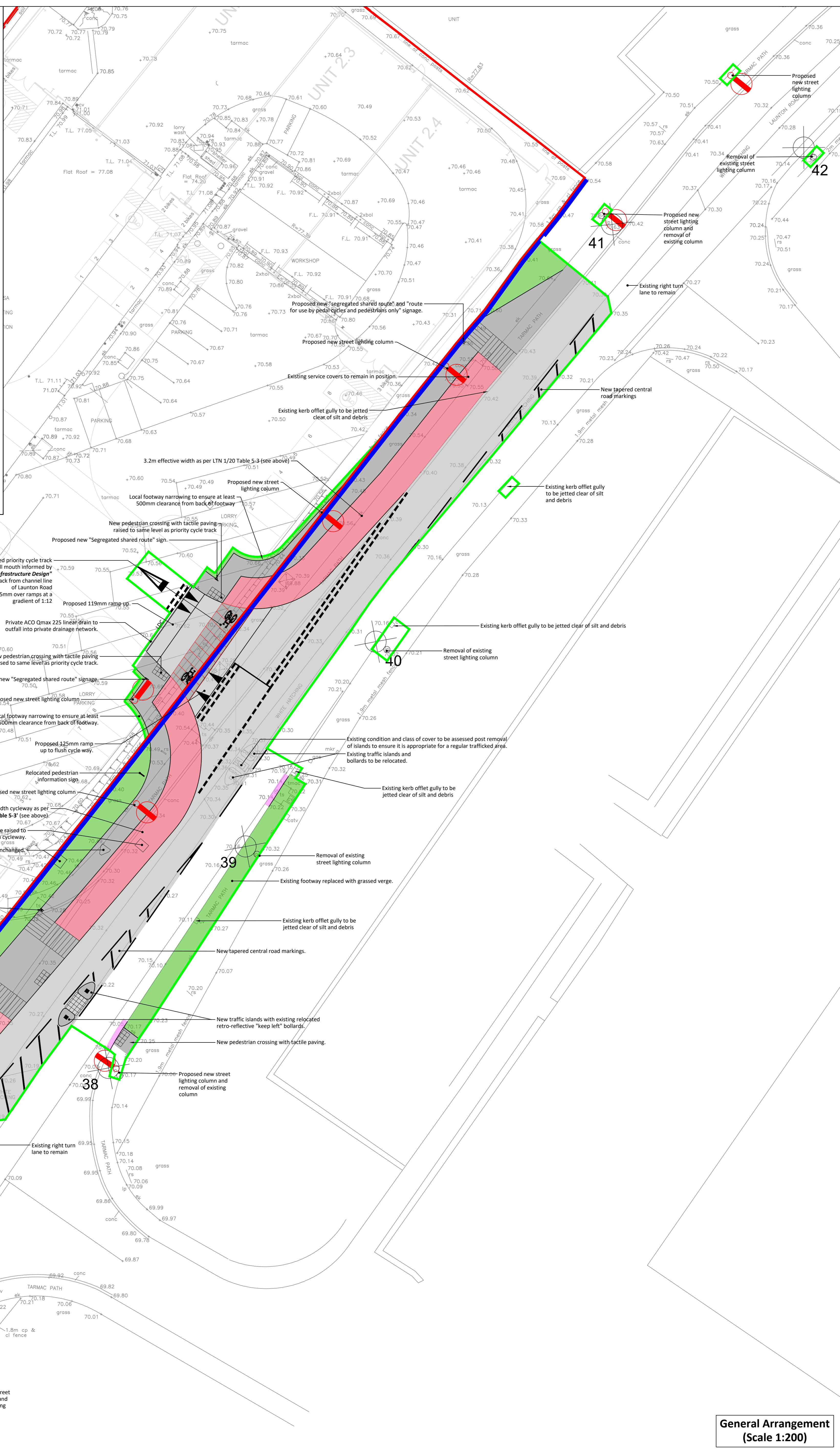
Vertical feature above 600mm high

Vertical feature above 600mm high

Vertical feature above 600mm high

Vertical feature above 600mm high

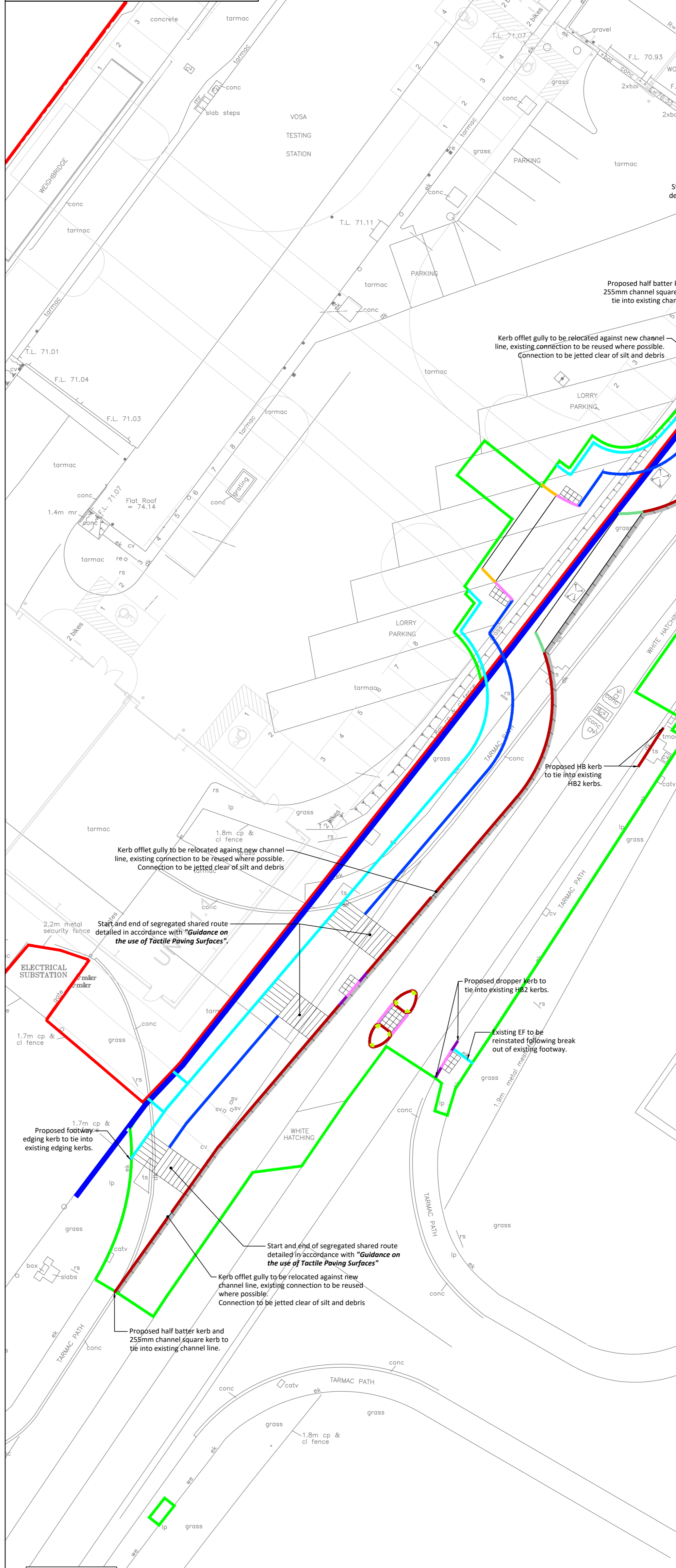
Vertical feature above 600mm high



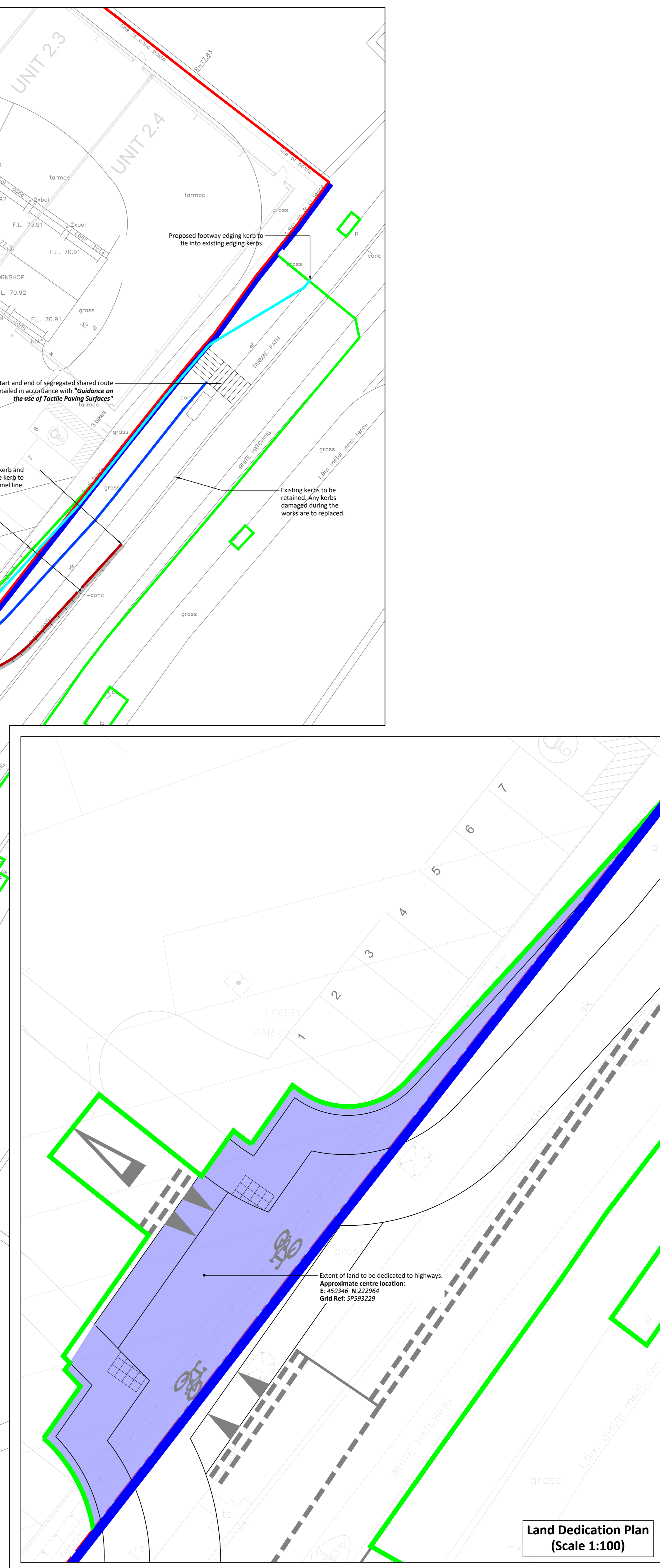
**General Arrangement (Scale 1:200)**

**Kerbing Key**

- Site boundary
- Highway boundary
- Extent of 5278 works boundary
- Half batter kerb (125mm upstand)
- Bullnose kerb (5mm upstand)
- Channel square kerb (255mm wide)
- Dropper kerb (125mm - 6mm upstand)
- Footway edging kerb
- Transition kerb (125mm - 6mm upstand)
- Quadrant kerb
- Shared route delineation 'Cambridge' Kerb



**Kerbing Plan (Scale 1:200)**



**Land Dedication Plan (Scale 1:100)**

- Rev D Updated to include street lighting columns and notes for existing gully cleansing following OCC highway comments.
- Rev C Shared route segregation kerb revised to 'Cambridge' kerb following comments from Oxfordshire Highways on 02.02.2022
- Rev B 150mm wide channel blocks removed from top and bottom of ramps following comments from Oxfordshire Highways on 18.01.2022
- Rev A Additional notes added to drawing & signpost locations amended following comments from Oxfordshire Highways Dec. 2021.

Drawn By:	JW	Client:	Markbank Construction Ltd.
Chkd By:	HS	Project:	Proposed Redevelopment Morley Site, Arkwright Road Bicester
Scale @ A0:	As Shown	Title:	Section 278 Works General Arrangement, Kerbing & Land Dedication
Date:	December 2021	Status:	FOR TECHNICAL APPROVAL
Project No.:	23200	Drawing No.:	200
Rev:	D	By:	HS
		Checked:	TH
			13.04.2022
		By:	HS
		Checked:	HS
			02.02.2022
		By:	HS
		Checked:	HS
			18.01.2022
		By:	JW
		Checked:	HS
			04.01.2022

Northampton  
4 London Way, Broomfield,  
Northampton, NN2 6JQ  
T: 01604 781111

Weymouth  
Unit 12A, Weymouth Innovation Centre,  
Weymouth Technology Park, Giffords Hill, Weymouth, Dorset, DT94 6DW  
T: 01328 300900

Milton Keynes  
Delta 1, Lakeside Forum, Buckingham Drive,  
Delta 1 Lakeside Forum, Milton Keynes, MK14 6LJ  
T: 01908 889433

Poole  
Delta 1, Branscombe Park House, Branscombe Business Park,  
Bournemouth Valley Road, Poole, Dorset, BH12 1TD  
T: 01202 548888

E: mail@jppuk.net  
W: jppuk.net

- Infrastructure Design
- Structural Engineering
- Development Planning
- Geotechnical & Environmental
- Surveying
- Professional Advice

