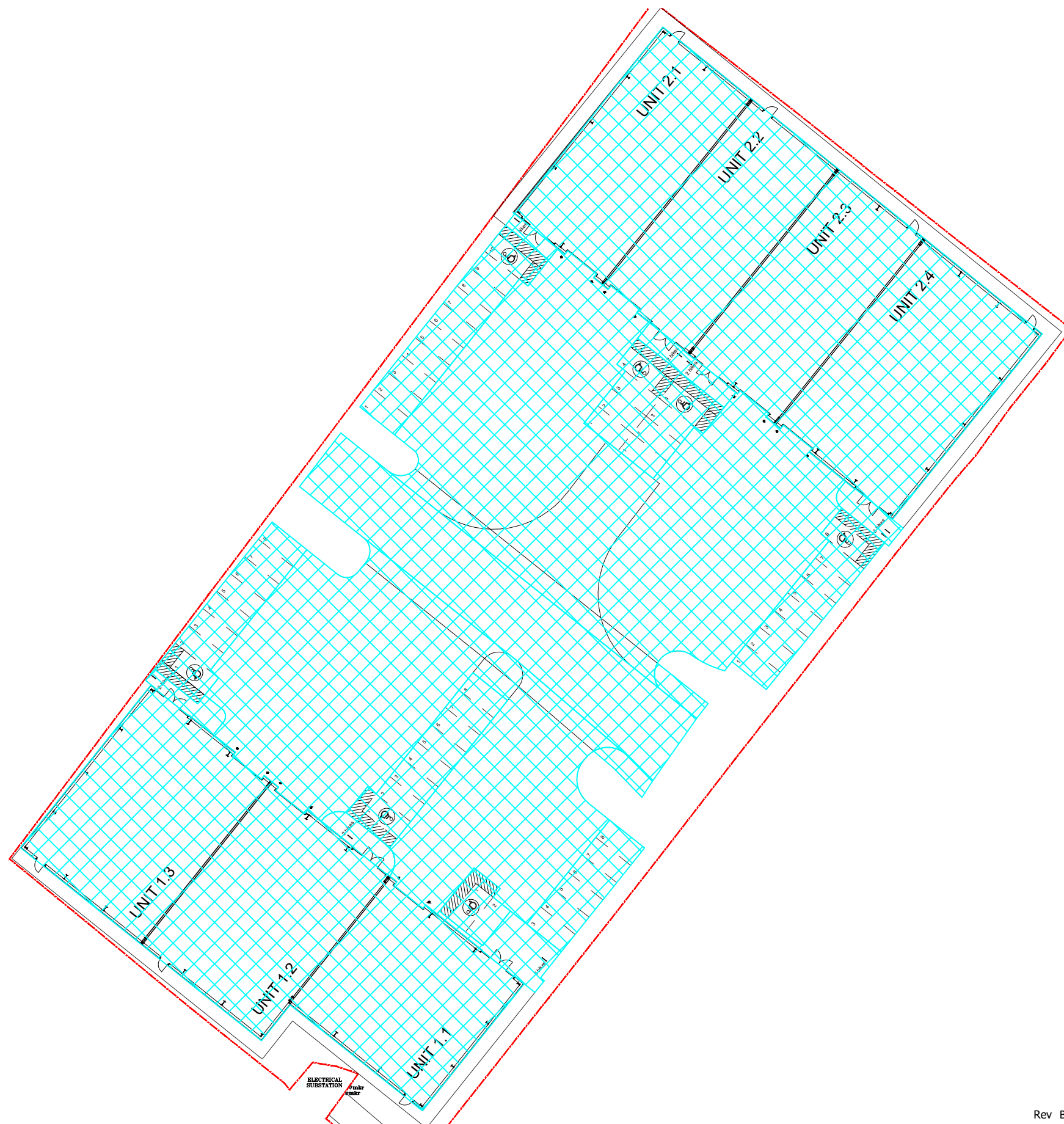


General Notes

1. All dimensions are in metres unless otherwise stated.
2. All levels are in metres.
3. This drawing is to be read in conjunction with all relevant Engineers and Architect's drawings, Specifications, Reports and Engineering Details.
4. Do not scale from this drawing.

Drawing key

-  Site boundary
-  Impermeable area = 5,662m²



Rev B Revised to suit latest site layout Drawn HS Checked TH 23.03.2022
 Rev A Revised to suit new site layout plan Drawn WRA Checked RS 14.07.2021

Northampton
T: 01604 781811

 Warwick
T: 02476 100530

 Milton Keynes
T: 01908 889433

E: mail@jppuk.net
W: jppuk.net

- Infrastructure Design
- Geotechnical & Environmental
- Structural Engineering
- Surveying
- Planning Services
- Professional Advice

Drawn By:	RS	Client	Markbank Construction Ltd.
Chkd By:	WRA	Project	Proposed Redevelopment, Morley Site, Arkwright Road, Bicester
Scale @A3:	1:500	Title	Impermeable Area Plan
Date:	08.07.2021		
Status:	TENDER		
Project No.:	23200	Drawing No:	E13
		Rev:	B

