



ILLUSTRATIVE HARD LANDSCAPE MATERIALS PALETTE



Proposed Access Road/Parking Areas

Location:
Private Access Road and parking areas

Specification:
Marshalls Tegula Priora Herringbone - Traditional or similar

240 x 160 x 80mm

Item Code: PV6461165

<https://www.marshalls.co.uk/commercial/product/tegula-permeable-paving>



Proposed Driveways

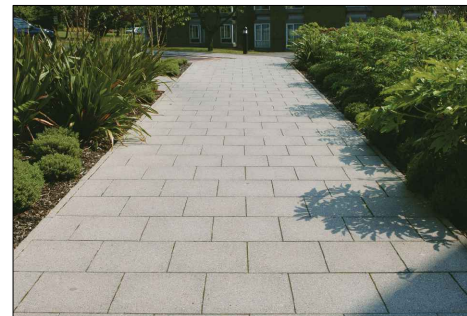
Location:
Driveways

Specification:
Marshalls Priora Permeable Paving - Buff or similar

200 x 100 x 60mm

Item Code: PV3800750

<https://www.marshalls.co.uk/commercial/product/priora-permeable-block-paving>



Proposed Residential Accesses

Location:
Residential accesses and communal pathways

Specification:
Marshalls Conservation X Paving - Silver Grey or similar

450 x 450 x 50mm

Item Code: FL8407000

<https://www.marshalls.co.uk/commercial/product/conservation-paving>

Proposed Road and Pavements

Location:
Access road and pavements

Specification:
Asphalt



Proposed Bench

Location:
Public Open Space

Specification:
Hatton Rustic 4 Slat Seat (BX17 4055) or similar

2000 x 580 x 770mm with submerged fixing as shown all to manufacturer's specification

<https://www.broxap.com/hatton-rustic-4-slat.html>

Key:

- Existing Tree
- Existing vegetation
- Proposed Tree (any located in close proximity to any walls/structure to be fitted with tree deflectors as appropriate)
- Shrub / herbaceous
- Proposed Hedgerow
- Meadow grass
- Bulbs in amenity grass
- Amenity grass
- Existing Hedgerow (to be retained)
- Main Access Road/Pedestrian Path (tarmac or similar)
- Private Road
- Driveway
- Pedestrian path (Paving flags or blocks)
- 0.6m Stone feature wall To architect specification
- 1.8m Stone feature wall To architect specification
- 1.8m Closeboard Fence To architect specification

REVISIONS:		
DATE:	VERSION:	INITIALS:
NICHOLSONS LOCKHART GARRATT <i>Leading solutions for the natural environment</i>		
TITLE: Hard Landscape Information		
PROJECT/SITE: Fewcott Road, Fritwell		
CLIENT: CALA Homes		
MAP REF: 20-4772		
REVISION: V12		
DATE: 27/07/22	SCALE: N/A	
APPROVED BY: RF	PRODUCED BY: JHA	

Reproduction with the permission of The Controller of Her Majesty's Stationery Office Crown Copyright (c) Licence number: AL 52281A000 Lockhart Garratt Ltd 8 Melbourne House, Corbygate Business Park, Weldon, Corby, Northants NN17 5JG. Not to be reproduced without the permission of Lockhart Garratt Ltd.

7 - 8 Melbourne House
Corbygate Business Park
Weldon, Corby
Northamptonshire NN17 5JG
01536 408840
www.nicholsonsgb.com

The Park
North Aston
Bicester
Oxfordshire OX25 6HL
01869 340342
www.lockhart-garratt.co.uk