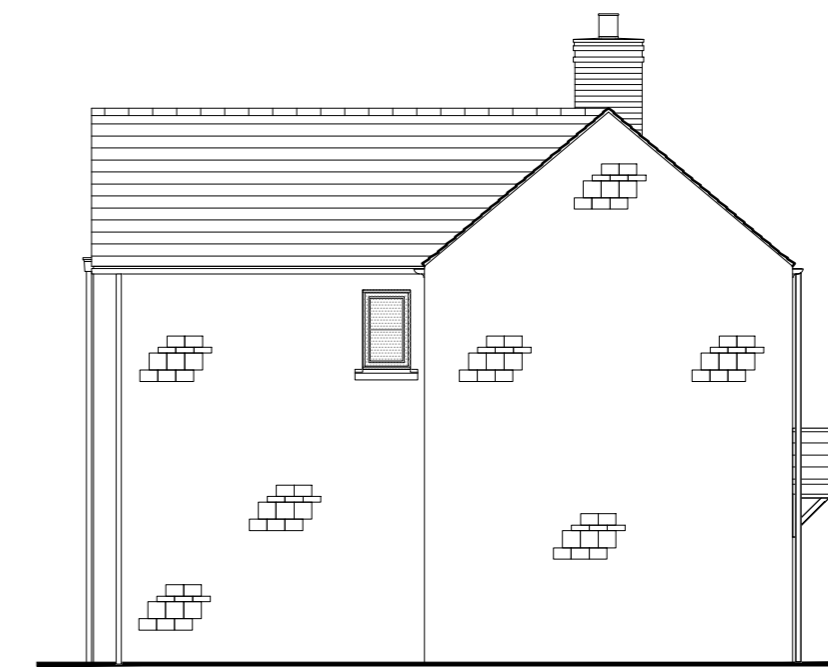




FRONT ELEVATION
SCALE 1:100



REAR ELEVATION
SCALE 1:100



SIDE ELEVATION
SCALE 1:100

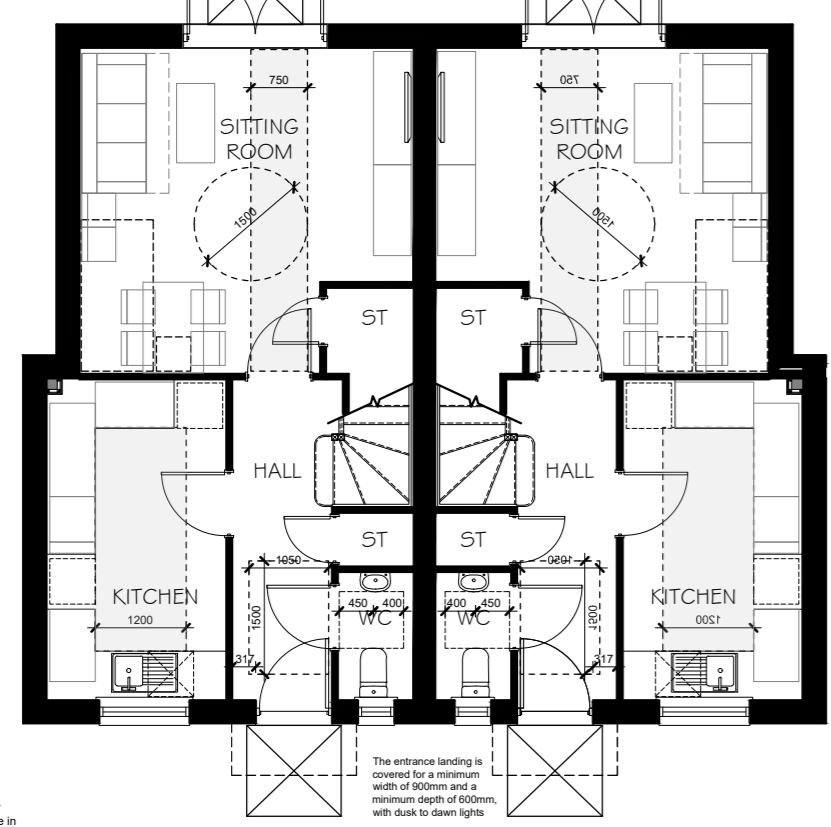
Notes:
Part M4(2) compliant
NDSS compliant
GIA:79 m2 measured to finish
2 Bed 4 Person
Rented: Plots 9, 10, 25, 26
Intermediate: Plots 18, 19

REV	DATE	DESCRIPTION
A	18.05.22	Revised following planning officer's comments

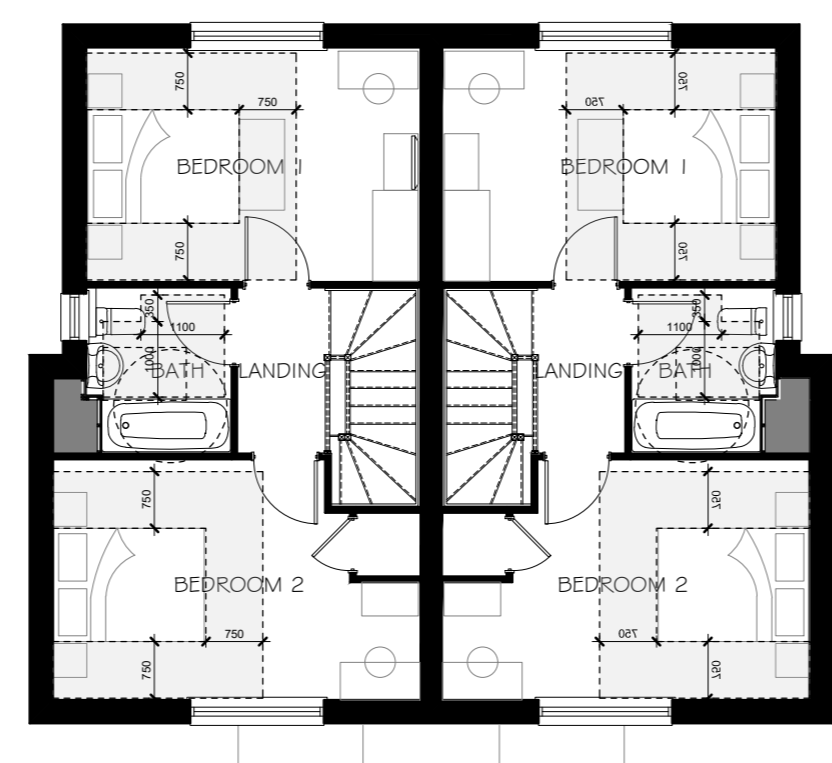
All sockets/switches/topcocks
controls to have their centre line
between 400-1200mm above floor
level and a minimum 300mm
(notably) to an internal corner.
Dotted lines denotes clear access
routes for M4(2) compliance

Handle height must be max of 1200mm from FFL.
Ensure patio doors are able to open simultaneously
to achieve minimum clear opening width of 800mm.

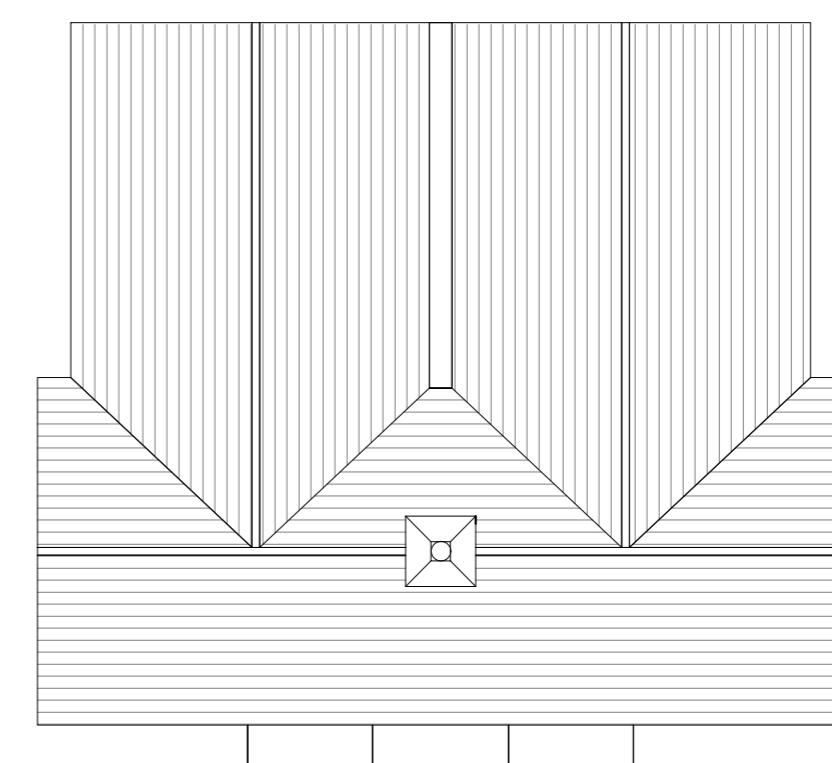
M4(2)
Step free access to dwelling
The entrance landing is
covered for a minimum width
of 800mm and a minimum
depth of 600mm, with dusk to
dawn lights
Door handle height must be max
of 1200mm from FFL
Consumer units are mounted
1350-1450mm above FFL
All sockets/switches must be min
300mm from an internal corner,
and the 450-1200mm above FFL
Boiler timer control and
thermostat are mounted b/w
900-1200mm above FFL
Principal living area:
Handle height must be
min 450mm to max of
1200mm from FFL
All other windows:
Handle height must be
min 450mm to max of
1400mm from FFL
No Vanity units are to be
specified for WC and Family
Bathroom in order to comply with
M4(2)
All walls in WC capable of firm
fining and support for adaptations
such as grab rails, 120mm WBP
Plywood to be applied to the
internal side of the WC partitions
as reinforced walls to withstand
loads of 1.5kN/m².
ensure door linings are
increased in width to
accommodate. Refer to SD/6024



GROUND FLOOR LAYOUT
SCALE 1:100



FIRST FLOOR LAYOUT
SCALE 1:100



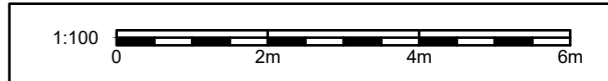
ROOF PLAN
SCALE 1:100



CALA HOMES (CHILTERN)LTD.
Gemini House, Mercury Park, Wooburn Green,
Buckinghamshire, HP10 0HH

Fewcott Road, Fritwell

Plots 09, 10, 18, 19, 25 & 26
Floor Plans and Elevations



Scale	1:100 @ A2	Dwg No.	PLN.10
Date	25.01.2022	Rev	A
Drawn	SK, AW		