



ILLUSTRATIVE HARD LANDSCAPE MATERIALS PALETTE



Proposed Access Road/Parking Areas

Location:
Private Access Road and parking areas

Specification:
Marshalls Tegula Priora Herringbone - Traditional or similar

240 x 160 x 80mm

Item Code: PV6461165

<https://www.marshalls.co.uk/commercial/product/tegula-permeable-paving>



Proposed Driveways

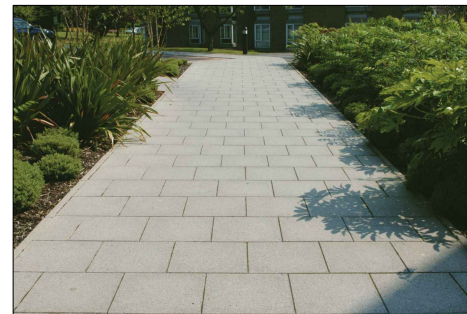
Location:
Driveways

Specification:
Marshalls Priora Permeable Paving - Buff or similar

200 x 100 x 60mm

Item Code: PV3800750

<https://www.marshalls.co.uk/commercial/product/priora-permeable-block-paving>



Proposed Residential Accesses

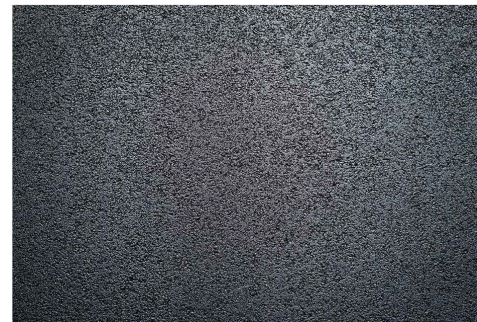
Location:
Residential accesses and communal pathways

Specification:
Marshalls Conservation X Paving - Silver Grey or similar

450 x 450 x 50mm

Item Code: FL8407000

<https://www.marshalls.co.uk/commercial/product/conservation-paving>



Proposed Road and Pavements

Location:
Access road and pavements

Specification:
Asphalt



Proposed Bench

Location:
Public Open Space

Specification:
Hatton Rustic 4 Slat Seat (BX17 4055) or similar

2000 x 580 x 770mm

<https://www.broxap.com/hatton-rustic-4-slat.html>

Key:

- Existing tree
- Proposed Structure
- Proposed Tree
- Shrub / herbaceous
- Wetland Planting
- Meadow grass
- Bulbs in amenity grass
- Amenity grass
- Proposed Hedgerow
- Existing Hedgerow (to be retained)
- Main Access Road/Pedestrian Path (tarmac or similar)
- Private Road
- Driveway
- Pedestrian path (Paving flags or blocks)
- New feature wall 1.8m - To architect specification
- New brick wall 1.8m - To architect specification
- Close board fence 1.8m

REVISIONS:		
DATE:	VERSION:	INITIALS:



TITLE: **Hard Landscape Information**

PROJECT/SITE: **Fewcott Road, Fritwell**

CLIENT: **CALA Homes**

MAP REF: **20-4772**

REVISION: **V2**

DATE: 02/02/21	SCALE: N/A
-----------------------	-------------------

APPROVED BY: RF	PRODUCED BY: SL
------------------------	------------------------

Reproduction with the permission of The Controller of Her Majesty's Stationery Office Crown Copyright (c) Licence number: AL 52281A000 Lockhart Garratt Ltd 8 Melbourne House, Corbygate Business Park, Weldon, Corby, Northants NN17 5JG. Not to be reproduced without the permission of Lockhart Garratt Ltd

<small>7 - 8 Melbourne House Corbygate Business Park Weldon, Corby Northamptonshire NN17 5JG 01536 408840</small>	<small>Greystones House Burford Road Chipping Norton Oxfordshire OX7 5UY 01608 656167</small>
<small>www.lockhart-garratt.co.uk</small>	