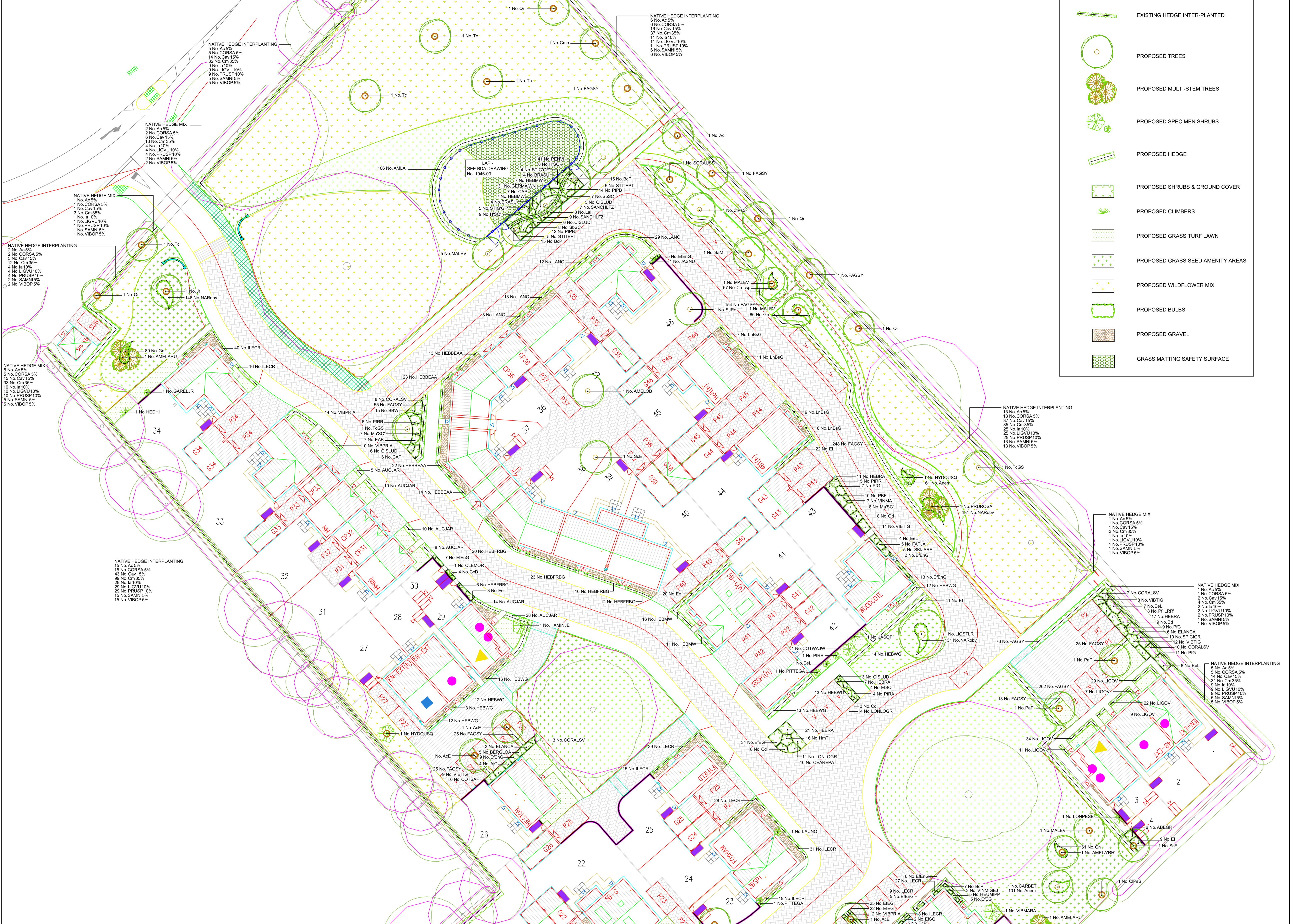


LEGEND

- EXISTING TREES & HEDGES RETAINED AND MANAGED
- EXISTING HEDGE INTER-PLANTED
- PROPOSED TREES
- PROPOSED MULTI-STEM TREES
- PROPOSED SPECIMEN SHRUBS
- PROPOSED HEDGE
- PROPOSED SHRUBS & GROUND COVER
- PROPOSED CLIMBERS
- PROPOSED GRASS TURF LAWN
- PROPOSED GRASS SEED AMENITY AREAS
- PROPOSED WILDFLOWER MIX
- PROPOSED BULBS
- PROPOSED GRAVEL
- GRASS MATTING SAFETY SURFACE



PLANT SCHEDULE

No.	Species Name	Height	Grill	Specification	Per Site Density
1	Acacia saligna	4000mm	14-16mm	Extra Heavy Standard Clear Stem 175-200 Stems/HS	15
2	Acacia saligna	4000mm	14-16mm	Extra Heavy Standard Clear Stem 175-200 Stems/HS	15
3	Acacia saligna	4000mm	14-16mm	Extra Heavy Standard Clear Stem 175-200 Stems/HS	15
4	Acacia saligna	4000mm	14-16mm	Extra Heavy Standard Clear Stem 175-200 Stems/HS	15
5	Acacia saligna	4000mm	14-16mm	Extra Heavy Standard Clear Stem 175-200 Stems/HS	15
6	Acacia saligna	4000mm	14-16mm	Extra Heavy Standard Clear Stem 175-200 Stems/HS	15
7	Acacia saligna	4000mm	14-16mm	Extra Heavy Standard Clear Stem 175-200 Stems/HS	15
8	Acacia saligna	4000mm	14-16mm	Extra Heavy Standard Clear Stem 175-200 Stems/HS	15
9	Acacia saligna	4000mm	14-16mm	Extra Heavy Standard Clear Stem 175-200 Stems/HS	15
10	Acacia saligna	4000mm	14-16mm	Extra Heavy Standard Clear Stem 175-200 Stems/HS	15
11	Acacia saligna	4000mm	14-16mm	Extra Heavy Standard Clear Stem 175-200 Stems/HS	15
12	Acacia saligna	4000mm	14-16mm	Extra Heavy Standard Clear Stem 175-200 Stems/HS	15
13	Acacia saligna	4000mm	14-16mm	Extra Heavy Standard Clear Stem 175-200 Stems/HS	15
14	Acacia saligna	4000mm	14-16mm	Extra Heavy Standard Clear Stem 175-200 Stems/HS	15
15	Acacia saligna	4000mm	14-16mm	Extra Heavy Standard Clear Stem 175-200 Stems/HS	15
16	Acacia saligna	4000mm	14-16mm	Extra Heavy Standard Clear Stem 175-200 Stems/HS	15
17	Acacia saligna	4000mm	14-16mm	Extra Heavy Standard Clear Stem 175-200 Stems/HS	15
18	Acacia saligna	4000mm	14-16mm	Extra Heavy Standard Clear Stem 175-200 Stems/HS	15
19	Acacia saligna	4000mm	14-16mm	Extra Heavy Standard Clear Stem 175-200 Stems/HS	15
20	Acacia saligna	4000mm	14-16mm	Extra Heavy Standard Clear Stem 175-200 Stems/HS	15
21	Acacia saligna	4000mm	14-16mm	Extra Heavy Standard Clear Stem 175-200 Stems/HS	15
22	Acacia saligna	4000mm	14-16mm	Extra Heavy Standard Clear Stem 175-200 Stems/HS	15
23	Acacia saligna	4000mm	14-16mm	Extra Heavy Standard Clear Stem 175-200 Stems/HS	15
24	Acacia saligna	4000mm	14-16mm	Extra Heavy Standard Clear Stem 175-200 Stems/HS	15
25	Acacia saligna	4000mm	14-16mm	Extra Heavy Standard Clear Stem 175-200 Stems/HS	15
26	Acacia saligna	4000mm	14-16mm	Extra Heavy Standard Clear Stem 175-200 Stems/HS	15
27	Acacia saligna	4000mm	14-16mm	Extra Heavy Standard Clear Stem 175-200 Stems/HS	15
28	Acacia saligna	4000mm	14-16mm	Extra Heavy Standard Clear Stem 175-200 Stems/HS	15
29	Acacia saligna	4000mm	14-16mm	Extra Heavy Standard Clear Stem 175-200 Stems/HS	15
30	Acacia saligna	4000mm	14-16mm	Extra Heavy Standard Clear Stem 175-200 Stems/HS	15
31	Acacia saligna	4000mm	14-16mm	Extra Heavy Standard Clear Stem 175-200 Stems/HS	15
32	Acacia saligna	4000mm	14-16mm	Extra Heavy Standard Clear Stem 175-200 Stems/HS	15
33	Acacia saligna	4000mm	14-16mm	Extra Heavy Standard Clear Stem 175-200 Stems/HS	15
34	Acacia saligna	4000mm	14-16mm	Extra Heavy Standard Clear Stem 175-200 Stems/HS	15
35	Acacia saligna	4000mm	14-16mm	Extra Heavy Standard Clear Stem 175-200 Stems/HS	15
36	Acacia saligna	4000mm	14-16mm	Extra Heavy Standard Clear Stem 175-200 Stems/HS	15
37	Acacia saligna	4000mm	14-16mm	Extra Heavy Standard Clear Stem 175-200 Stems/HS	15
38	Acacia saligna	4000mm	14-16mm	Extra Heavy Standard Clear Stem 175-200 Stems/HS	15
39	Acacia saligna	4000mm	14-16mm	Extra Heavy Standard Clear Stem 175-200 Stems/HS	15
40	Acacia saligna	4000mm	14-16mm	Extra Heavy Standard Clear Stem 175-200 Stems/HS	15
41	Acacia saligna	4000mm	14-16mm	Extra Heavy Standard Clear Stem 175-200 Stems/HS	15
42	Acacia saligna	4000mm	14-16mm	Extra Heavy Standard Clear Stem 175-200 Stems/HS	15
43	Acacia saligna	4000mm	14-16mm	Extra Heavy Standard Clear Stem 175-200 Stems/HS	15
44	Acacia saligna	4000mm	14-16mm	Extra Heavy Standard Clear Stem 175-200 Stems/HS	15
45	Acacia saligna	4000mm	14-16mm	Extra Heavy Standard Clear Stem 175-200 Stems/HS	15
46	Acacia saligna	4000mm	14-16mm	Extra Heavy Standard Clear Stem 175-200 Stems/HS	15
47	Acacia saligna	4000mm	14-16mm	Extra Heavy Standard Clear Stem 175-200 Stems/HS	15
48	Acacia saligna	4000mm	14-16mm	Extra Heavy Standard Clear Stem 175-200 Stems/HS	15
49	Acacia saligna	4000mm	14-16mm	Extra Heavy Standard Clear Stem 175-200 Stems/HS	15
50	Acacia saligna	4000mm	14-16mm	Extra Heavy Standard Clear Stem 175-200 Stems/HS	15
51	Acacia saligna	4000mm	14-16mm	Extra Heavy Standard Clear Stem 175-200 Stems/HS	15
52	Acacia saligna	4000mm	14-16mm	Extra Heavy Standard Clear Stem 175-200 Stems/HS	15
53	Acacia saligna	4000mm	14-16mm	Extra Heavy Standard Clear Stem 175-200 Stems/HS	15
54	Acacia saligna	4000mm	14-16mm	Extra Heavy Standard Clear Stem 175-200 Stems/HS	15
55	Acacia saligna	4000mm	14-16mm	Extra Heavy Standard Clear Stem 175-200 Stems/HS	15
56	Acacia saligna	4000mm	14-16mm	Extra Heavy Standard Clear Stem 175-200 Stems/HS	15
57	Acacia saligna	4000mm	14-16mm	Extra Heavy Standard Clear Stem 175-200 Stems/HS	15
58	Acacia saligna	4000mm	14-16mm	Extra Heavy Standard Clear Stem 175-200 Stems/HS	15
59	Acacia saligna	4000mm	14-16mm	Extra Heavy Standard Clear Stem 175-200 Stems/HS	15
60	Acacia saligna	4000mm	14-16mm	Extra Heavy Standard Clear Stem 175-200 Stems/HS	15
61	Acacia saligna	4000mm	14-16mm	Extra Heavy Standard Clear Stem 175-200 Stems/HS	15
62	Acacia saligna	4000mm	14-16mm	Extra Heavy Standard Clear Stem 175-200 Stems/HS	15
63	Acacia saligna	4000mm	14-16mm	Extra Heavy Standard Clear Stem 175-200 Stems/HS	15
64	Acacia saligna	4000mm	14-16mm	Extra Heavy Standard Clear Stem 175-200 Stems/HS	15
65	Acacia saligna	4000mm	14-16mm	Extra Heavy Standard Clear Stem 175-200 Stems/HS	15
66	Acacia saligna	4000mm	14-16mm	Extra Heavy Standard Clear Stem 175-200 Stems/HS	15
67	Acacia saligna	4000mm	14-16mm	Extra Heavy Standard Clear Stem 175-200 Stems/HS	15
68	Acacia saligna	4000mm	14-16mm	Extra Heavy Standard Clear Stem 175-200 Stems/HS	15
69	Acacia saligna	4000mm	14-16mm	Extra Heavy Standard Clear Stem 175-200 Stems/HS	15
70	Acacia saligna	4000mm	14-16mm	Extra Heavy Standard Clear Stem 175-200 Stems/HS	15
71	Acacia saligna	4000mm	14-16mm	Extra Heavy Standard Clear Stem 175-200 Stems/HS	15
72	Acacia saligna	4000mm	14-16mm	Extra Heavy Standard Clear Stem 175-200 Stems/HS	15
73	Acacia saligna	4000mm	14-16mm	Extra Heavy Standard Clear Stem 175-200 Stems/HS	15
74	Acacia saligna	4000mm	14-16mm	Extra Heavy Standard Clear Stem 175-200 Stems/HS	15
75	Acacia saligna	4000mm	14-16mm	Extra Heavy Standard Clear Stem 175-200 Stems/HS	15
76	Acacia saligna	4000mm	14-16mm	Extra Heavy Standard Clear Stem 175-200 Stems/HS	15
77	Acacia saligna	4000mm	14-16mm	Extra Heavy Standard Clear Stem 175-200 Stems/HS	15
78	Acacia saligna	4000mm	14-16mm	Extra Heavy Standard Clear Stem 175-200 Stems/HS	15
79	Acacia saligna	4000mm	14-16mm	Extra Heavy Standard Clear Stem 175-200 Stems/HS	15
80	Acacia saligna	4000mm	14-16mm	Extra Heavy Standard Clear Stem 175-200 Stems/HS	15
81	Acacia saligna	4000mm	14-16mm	Extra Heavy Standard Clear Stem 175-200 Stems/HS	15
82	Acacia saligna	4000mm	14-16mm	Extra Heavy Standard Clear Stem 175-200 Stems/HS	15
83	Acacia saligna	4000mm	14-16mm	Extra Heavy Standard Clear Stem 175-200 Stems/HS	15
84	Acacia saligna	4000mm	14-16mm	Extra Heavy Standard Clear Stem 175-200 Stems/HS	15
85	Acacia saligna	4000mm	14-16mm	Extra Heavy Standard Clear Stem 175-200 Stems/HS	15
86	Acacia saligna	4000mm	14-16mm	Extra Heavy Standard Clear Stem 175-200 Stems/HS	15
87	Acacia saligna	4000mm	14-16mm	Extra Heavy Standard Clear Stem 175-200 Stems/HS	15
88	Acacia saligna	4000mm	14-16mm	Extra Heavy Standard Clear Stem 175-200 Stems/HS	15
89	Acacia saligna	4000mm	14-16mm	Extra Heavy Standard Clear Stem 175-200 Stems/HS	15
90	Acacia saligna	4000mm	14-16mm	Extra Heavy Standard Clear Stem 175-200 Stems/HS	15
91	Acacia saligna	4000mm	14-16mm	Extra Heavy Standard Clear Stem 175-200 Stems/HS	15
92	Acacia saligna	4000mm	14-16mm	Extra Heavy Standard Clear Stem 175-200 Stems/HS	15
93	Acacia saligna	4000mm	14-16mm	Extra Heavy Standard Clear Stem 175-200 Stems/HS	15
94	Acacia saligna	4000mm	14-16mm	Extra Heavy Standard Clear Stem 175-200 Stems/HS	15
95	Acacia saligna	4000mm	14-16mm	Extra Heavy Standard Clear Stem 175-200 Stems/HS	15
96	Acacia saligna	4000mm	14-16mm	Extra Heavy Standard Clear Stem 175-200 Stems/HS	15
97	Acacia saligna	4000mm	14-16mm	Extra Heavy Standard Clear Stem 175-200 Stems/HS	15
98	Acacia saligna	4000mm	14-16mm	Extra Heavy Standard Clear Stem 175-200 Stems/HS	15
99	Acacia saligna	4000mm	14-16mm	Extra Heavy Standard Clear Stem 175-200 Stems/HS	15
100	Acacia saligna	4000mm	14-16mm	Extra Heavy Standard Clear Stem 175-200 Stems/HS	15

SPECIFICATION NOTES:

- Proposals to be read in conjunction with Focus on Design Architect's Drawings.
- Tree and hedge protection to be erected in accordance with Arboricultural consultant's recommendations prior to any work commencing on site and retained in position until completion of works.
- No storage of materials or machinery to be allowed within the protective fence.
- Any work within the RPA of the retained tree / hedge to be carried out by hand tools to avoid disturbance or damage to existing roots.
- All landscape operations to be in accordance with BS 4428: 1989 & BS 3936: 1992 and all amendments to date.
- Topsoil to be stripped from site in dry conditions, stored in heaps not exceeding 2m high, and maintained weed free for re-use on site.
- Prior to placing topsoil, subsoil to be rippled to alleviate any compaction and ensure free drainage to the minimum rooting depth which shall normally be 450mm for grass, 600mm for shrubs and 900mm for trees.
- Any imported topsoil to be to BS 3882, medium texture, neutral pH value, reasonably stone free with no stones over 20mm in size.
- Topsoil depths to be 450mm for shrubs, climbers and groundcover planting, 300mm for native hedge & 150mm for grass areas with no additional topsoil added to wildflower areas.
- Finished topsoil levels to be 25mm above adjacent paved surfaces to allow for settlement, and 300mm wide hard surfaced mowing margin to be provided where lawn adjoins buildings.
- Garden grass areas should be prepared by thorough weeding and cultivation of topsoil to a fine tilth, spread to smooth and frowning levels prior to turfing with good quality lawn turf laid in accordance with good practice on a 25mm sand bed spread evenly over prepared topsoil.
- Amenity grass areas to be prepared by thorough weeding and cultivation of topsoil to a fine tilth, spread to smooth and frowning levels prior to seeding with Geminal A19 Mix (All-purpose Landscaping) sown at 50g/m² in accordance with suppliers recommendations.
- Wildflower areas to be prepared by repeated weeding and cultivation of low fertility soil to a medium tilth and rolling or treading to produce a firm surface for seeding with Emsgrasso EM3 Special General Purpose Meadow Mix (sown at 4g/m²). This should be sown in late spring or early autumn and firmed in by rolling or treading in accordance with suppliers recommendations.
- All tree handling, storage and planting should be carried out in accordance with Sections 9 & 10 of BS 8545:2014 'Trees from nursery to independence in the landscape - recommendations'.
- All trees and other planting to be positioned on site to avoid conflict with services and supplied with Greenblue Urban ReRoot 600/1000 root barriers where necessary to protect services, structures and surfaces.
- All bare root and rootballed stock to be planted during the first planting season (November to March) following completion of the construction works.
- Any bare root or rootballed stock to be substituted with container grown stock of similar size.
- Transplants in native mixes to be of local provenance, planted in groups of 3-5 of the same species and protected with spiral rabbit guards and canes.
- Beech hedges to be of local provenance, planted at 400mm centres with 400mm offset and protected with spiral rabbit guards and canes.
- Specimen shrubs, Feathered, Light Standard and Standard Nursery Stock trees (6-8cm & 10cm girth) to be planted in topsoil pits 900mm diameter x 600mm deep and supported with a single stub stake or angled stake and rubber Tom Tie fixed no more than 50mm from the top of the stake, with stakes removed after two years.
- Selected Standard and Heavy Standard Nursery Stock trees (10-12cm & 12-14cm girth) to be planted in topsoil pits 1200mm diameter x 750mm deep or larger as necessary to ensure that pits are at least 75mm deeper than the root system and wide enough to accommodate roots when fully spread, with the bottom of the pit broken up to a depth of 150mm and supported with three stakes, spacer straps and rubber Tom Ties.
- Extra Heavy Standard Trees (14-16cm girth) to be planted in topsoil pits 1500mm diameter x 900mm deep, or larger as necessary to ensure that pits are at least 250mm deeper and 500mm wider than root system when fully spread, with the bottom of the pit broken up to a depth of 150mm and supported with three stakes, spacer straps and rubber Tom Ties.
- Multi-stem trees to be planted in topsoil pits 2000mm diameter x 750mm deep or larger as necessary to allow 500mm soil around rootball with angled stakes.
- Any trees within grass areas to be provided with an Arborescens stimmer guard.
- Climbers to be provided with line wires and tied in where not self-clinging.
- All planting areas to be covered with a 75mm depth of medium grade bark mulch and to a minimum of 1m width along hedges and 1m diameter around trees and this depth should be maintained throughout the maintenance period.
- Sufficient water should be provided at intervals as required to maintain healthy growth. As a guide, the holding capacity of the soil and amount of water available to trees and shrubs should be assessed at each maintenance visit from April to September for the first 2 years after planting. Watering should be carried out when 10 consecutive days at 25 degrees is recorded during the growing season and if the probe / tensiometer values indicate it would be appropriate.
- All planting to be maintained and guaranteed for 5 years to include watering, weeding, pest & disease control.