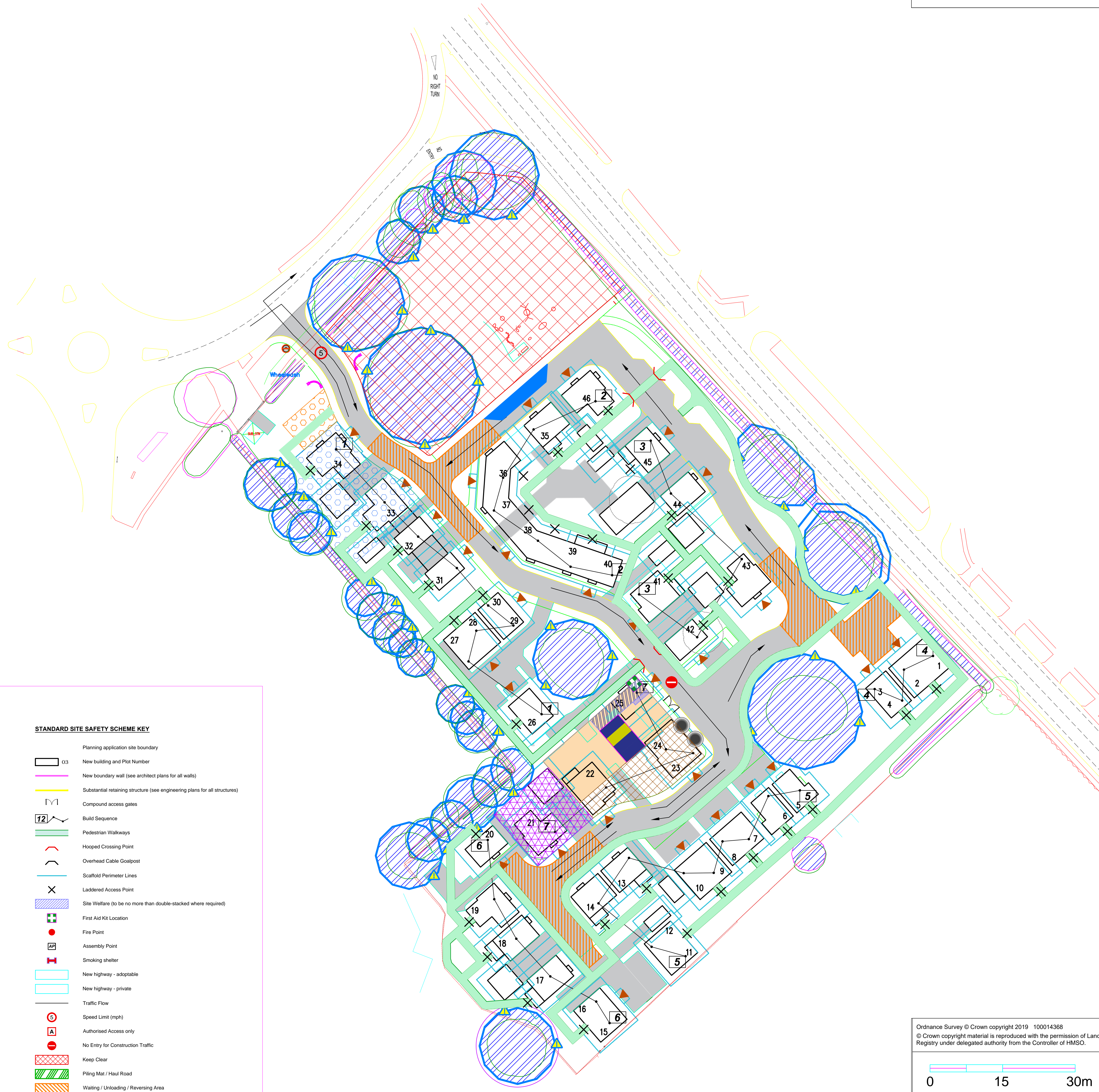


Contractors must check all dimensions on site. Only figured dimensions are to be worked from. Discrepancies must be reported to the Architect before proceeding.
THIS DRAWING IS COPYRIGHT. ©

REVISIONS:			
A	06.06.22	Layout updated to Planning layout. JM comments added	RS
B	05.09.22	Layout updated to TK comments Dwg no updated	RS
C	21.09.22	Amended as TK comments 12.09.22	RS



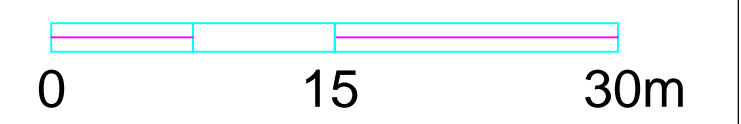
STANDARD SITE SAFETY SCHEME KEY

	Planning application site boundary
	03 New building and Plot Number
	New boundary wall (see architect plans for all walls)
	Substantial retaining structure (see engineering plans for all structures)
	Compound access gates
	Build Sequence
	Pedestrian Walkways
	Hooped Crossing Point
	Overhead Cable Goalpost
	Scaffold Perimeter Lines
	Laddered Access Point
	Site Welfare (to be no more than double-stacked where required)
	First Aid Kit Location
	Fire Point
	Assembly Point
	Smoking shelter
	New highway - adoptable
	New highway - private
	Traffic Flow
	Speed Limit (mph)
	Authorised Access only
	No Entry for Construction Traffic
	Keep Clear
	Piling Mat / Haul Road
	Waiting / Unloading / Reversing Area
	Contractor Parking
	Loading Bay
	Fence - Fortress
	Fence - Heras
	Fence - 2.4m high ply hoarding
	Gravel margin
	Drainage sump
	Generator
	Diesel Storage & Spill Kit
	Silo / Mixing Area
	Storage - materials
	Storage - secure container
	Storage - timber Rack
	Storage - truss Rack
	Storage - waste
	Storage - top soil
	Hoggin footpath
	NHBC / visitor parking
	Sales - Show Homes
	Sales - Parking
	Wheelwash station
	Fence - tree protection

Construction Notes: Ground Makeup:

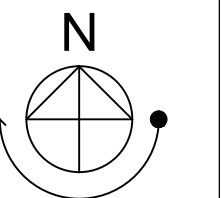
- Wheelwash area to be laid to fall into gully and designated manhole. This is not to be connected to mail line while wheel wash in operation and is to be regularly pumped out.
- Welfare to be 100mm 6F5 on terram with 2 x 450mm slabbed access paths around units and concrete pads for units
- Storage containers to be based on 100mm 6F5 on terram with concrete pads for container legs. Landing area (between gates and access doors of containers) to be 100mm concrete on 100mm 6F5
- Waste Area base to be 150mm 6F5 on terram
- Car parking and material storage area base to be 300mm 6F5 on terram
- Pedestrian walkways to be 100mm 6F5 on terram
- Silo base by others, see engineers drawing.
- For container (canteen & office) pad design, refer to engineers drawing
- Piling mat - design by others, see separate drawing

Ordnance Survey © Crown copyright 2019 100014368
© Crown copyright material is reproduced with the permission of Land Registry under delegated authority from the Controller of HMSO.



— Planning Application Site

	Existing buildings
	Property owned by GreenSquare



Project		
BODICOTE Near Banbury		
Drawing Title		
Site Safety Logistics Plan		
File Location: S:\TEAM ASSET MANAGEMENT\2019 PROJECTS		
Date	Status	
16/11/2020	Provisional	
Scale	Drawn by	Checked by
1:500 @ A1	MS	-
Project No.	Drawing No.	Revision
22-029	C/SL/115	/ C