

This drawing should not be scaled. Dimensions to be verified on site. Any discrepancies should be referred to the Engineer prior to work being put in hand.

This drawing is the property of Waterman Infrastructure & Environment Limited, and the drawing is issued on the condition that it is not copied, reproduced, related or disclosed to any unauthorised person, either wholly or in part without the consent in writing of Waterman Infrastructure & Environment Limited
Pickfords Wharf, Clerk Street, London SE1 9DG 1 020 7928 7888 1 020 7902 0992

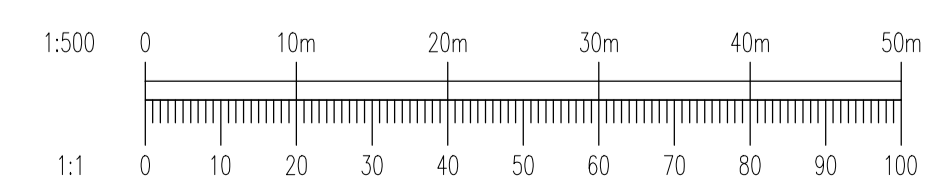
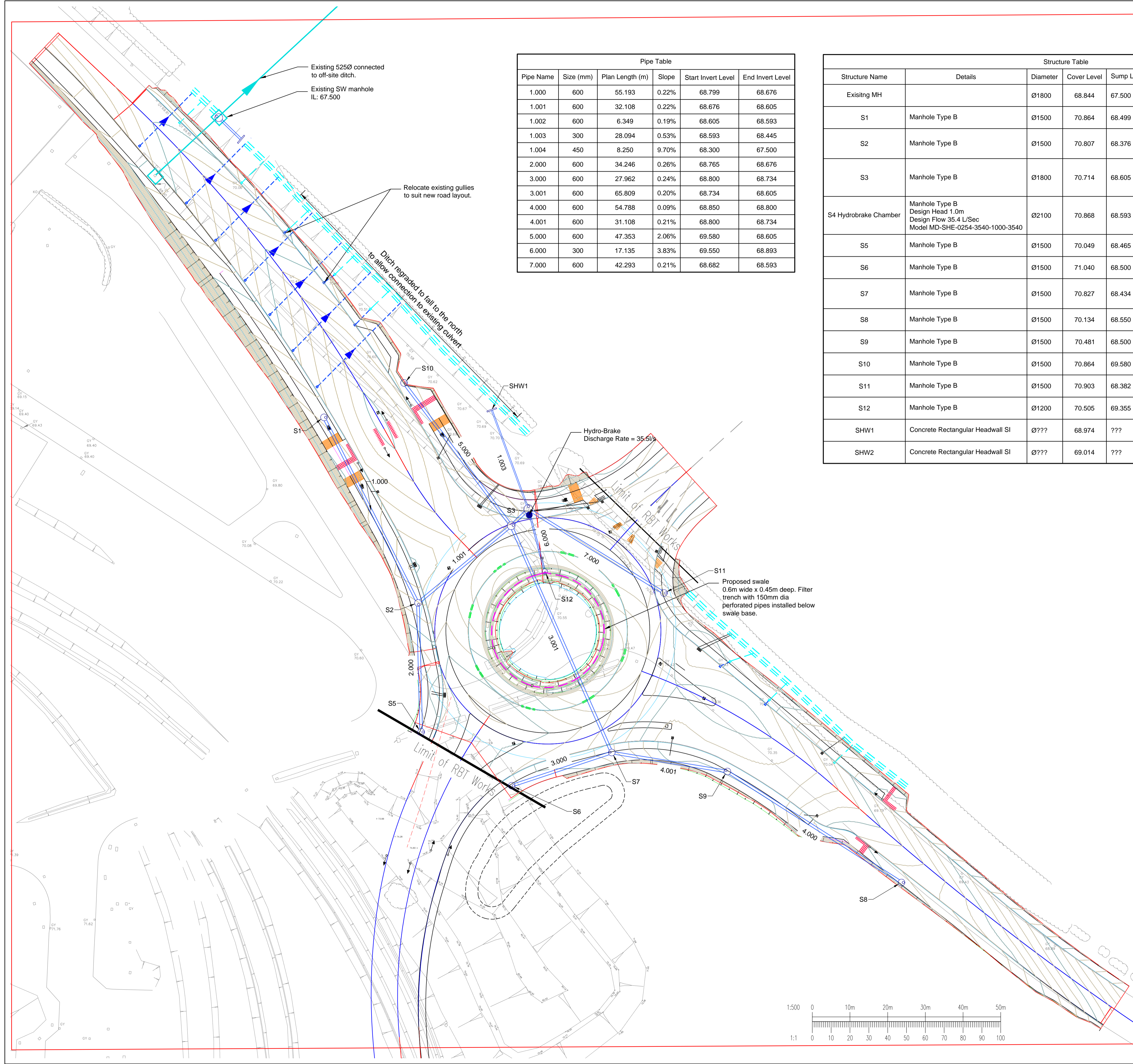
GENERAL NOTES

1. THIS DRAWING IS TO BE READ IN CONJUNCTION WITH ALL ENGINEER'S, ARCHITECT'S OR OTHER RELEVANT DRAWINGS AND SPECIFICATIONS.
2. ALL DIMENSIONS AND LEVELS ARE TO BE CHECKED ON SITE BY THE CONTRACTOR PRIOR TO PREPARING ANY WORKING DRAWINGS OR COMMENCING ON SITE.
3. THE CONTRACTOR MUST ENSURE AND WILL BE HELD RESPONSIBLE FOR THE OVERALL STABILITY OF THE BUILDING/STRUCTURE/EXCAVATION AT ALL STAGES OF THE WORK.
4. ALL WORK BY THE CONTRACTOR MUST BE CARRIED OUT IN SUCH A WAY THAT ALL REQUIREMENTS UNDER THE HEALTH AND SAFETY AT WORK ACT ARE SATISFIED.
5. ALL WORK IS TO BE CARRIED OUT IN COMPLIANCE WITH THE REQUIREMENTS OF THE RELEVANT STATUTORY AUTHORITIES AND REGULATIONS.
6. ROAD LAYOUT AND HIGHWAY WORKS SHALL BE IN ACCORDANCE WITH DMRB AND OXFORD COUNTY COUNCIL (OCC) STANDARDS.

- KEY:
- PROPOSED SURFACE WATER DRAIN
 - PROPOSED KERB OUTLET
 - HYDROBRAKE
 - PROPOSED ROAD GULLY
 - SWALE
 - EXISTING GULLY CONNECTED TO DITCH
 - NEW GULLIES TO CONNECT TO EXISTING DITCH DIRECTLY
 - PROPOSED FILTER DRAIN
 - EXISTING DITCH

Pipe Table					
Pipe Name	Size (mm)	Plan Length (m)	Slope	Start Invert Level	End Invert Level
1.000	600	55.193	0.22%	68.799	68.676
1.001	600	32.108	0.22%	68.676	68.605
1.002	600	6.349	0.19%	68.605	68.593
1.003	300	28.094	0.53%	68.593	68.445
1.004	450	8.250	9.70%	68.300	67.500
2.000	600	34.246	0.26%	68.765	68.676
3.000	600	27.962	0.24%	68.800	68.734
3.001	600	65.809	0.20%	68.734	68.605
4.000	600	54.788	0.09%	68.850	68.800
4.001	600	31.108	0.21%	68.800	68.734
5.000	600	47.353	2.06%	69.580	68.605
6.000	300	17.135	3.83%	69.550	68.893
7.000	600	42.293	0.21%	68.682	68.593

Structure Table							
Structure Name	Details	Diameter	Cover Level	Sump Level	Sump Depth	Co-Ordinates	Connected Pipes
Existing MH		Ø1800	68.844	67.500	0.000	459582.293mE 220870.354mN	1.004 Inv. 67.500
S1	Manhole Type B	Ø1500	70.864	68.499	0.300	459610.198mE 220790.846mN	1.000 Inv. 68.799
S2	Manhole Type B	Ø1500	70.807	68.376	0.300	459635.154mE 220741.617mN	1.000 Inv. 68.676 1.001 Inv. 68.676 2.000 Inv. 68.676
S3	Manhole Type B	Ø1800	70.714	68.605	0.000	459659.878mE 220762.102mN	1.001 Inv. 68.605 5.000 Inv. 68.605 1.002 Inv. 68.605 3.001 Inv. 68.605
S4 Hydrobrake Chamber	Manhole Type B Design Head 1.0m Design Flow 35.4 L/Sec Model MD-SHE-0254-3540-1000-3540	Ø2100	70.868	68.593	0.000	459664.458mE 220766.498mN	6.000 Inv. 68.893 1.003 Inv. 68.593 1.002 Inv. 68.593 7.000 Inv. 68.593
S5	Manhole Type B	Ø1500	70.049	68.465	0.300	459636.018mE 220707.382mN	2.000 Inv. 68.765
S6	Manhole Type B	Ø1500	71.040	68.500	0.300	459660.021mE 220693.140mN	3.000 Inv. 68.800
S7	Manhole Type B	Ø1500	70.827	68.434	0.300	459686.561mE 220701.946mN	4.001 Inv. 68.734 3.001 Inv. 68.734 3.000 Inv. 68.734
S8	Manhole Type B	Ø1500	70.134	68.550	0.300	459763.468mE 220667.473mN	4.000 Inv. 68.850
S9	Manhole Type B	Ø1500	70.481	68.500	0.300	459717.258mE 220696.906mN	4.000 Inv. 68.800 4.001 Inv. 68.800
S10	Manhole Type B	Ø1500	70.864	69.580	0.000	459631.451mE 220799.973mN	5.000 Inv. 69.580
S11	Manhole Type B	Ø1500	70.903	68.382	0.300	459700.439mE 220744.270mN	7.000 Inv. 68.682
S12	Manhole Type B	Ø1200	70.505	69.355	0.195	459668.819mE 220749.928mN	6.000 Inv. 69.550
SHW1	Concrete Rectangular Headwall SI	Ø???	68.974	???	0.000	459654.724mE 220792.852mN	1.003 Inv. 68.445
SHW2	Concrete Rectangular Headwall SI	Ø???	69.014	???	0.000	459588.214mE 220864.609mN	1.004 Inv. 68.300



**SAFETY, HEALTH AND ENVIRONMENTAL INFORMATION
UNUSUAL SIGNIFICANT HAZARDS**

It is assumed that all works will be carried out by a competent contractor working, where appropriate, to an approved method statement. In addition to the hazards/risks normally associated with the types of work detailed on this drawing, note the following:

- CONSTRUCTION
- MAINTENANCE / CLEANING
- DECOMMISSIONING / DEMOLITION

Rev	Date	Description	By
AD2	20.04.21	OPEN POND OMITTED AND OVERSIZED PIPES PROVIDED FOR STORAGE. DISCHARGE RATE REVISED.	KP
AD1	05.03.21	FIRST ISSUE	ST

Amendments

GRAVEN HILL, BICESTER

**A41 PIONEER ROUNDABOUT
DRAINAGE LAYOUT**

Client: Graven Hill Village Development Company Limited

5th Floor One Cornwall Street Birmingham B3 2DX
1 0121 212 7700
mail@watermangroup.com www.watermangroup.com

Drawing Status: **PRELIMINARY**

Designed by: JG Checked by: DP Project No: WIE11386
Drawn by: AN Date: MAR 2021
Scales @ A1: 1:500 Computer File No: WIE1138-A41-90-S1-Drainage_A02_revised.dwg
work to figured dimensions only

Publisher	Zone	Category	Number	Revision
WIE	A41	90	551	A02