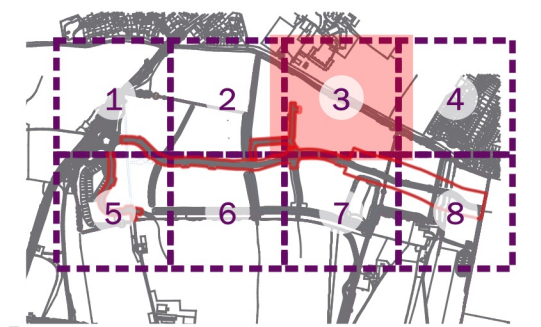


- Site Boundary
- T1..... Tree/Group Number
- Tree/Group Canopy
- Tree Stem
- Root Protection Area
- Category A: Trees of high quality and value
- Category B: Trees of moderate quality and value
- Category C: Trees of low quality and value
- Category U: Trees of poor quality and value
- Trees to be Removed
- ★ Veteran Tree
- Veteran Tree Buffer
- Protective Fencing in accordance with BS 5837:2012
- Low Impact Protective Fencing in accordance with BS 5837:2012



client

L&Q Estates Ltd

project title
Wykham Park Farm, Spine Road & Ancillary Road Application

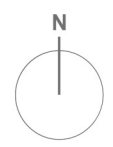
drawing title
Plan EDP 1: Tree Protection Plan (Sheet 3 of 8)

date	15 APRIL 2021	drawn by	TC
drawing number	edp5378_d014b	checked	LT
scale	1:1,500 @ A3	QA	GY

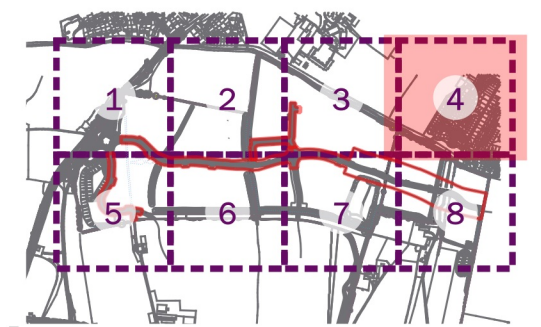


Registered office: 01285 740427 - www.edp-uk.co.uk - info@edp-uk.co.uk





- Site Boundary
- T1..... Tree/Group Number
- Tree/Group Canopy
- Tree Stem
- Root Protection Area
- Category A: Trees of high quality and value
- Category B: Trees of moderate quality and value
- Category C: Trees of low quality and value
- Category U: Trees of poor quality and value
- Trees to be Removed
- ★ Veteran Tree
- Veteran Tree Buffer
- Protective Fencing in accordance with BS 5837:2012
- Low Impact Protective Fencing in accordance with BS 5837:2012



client
L&Q Estates Ltd

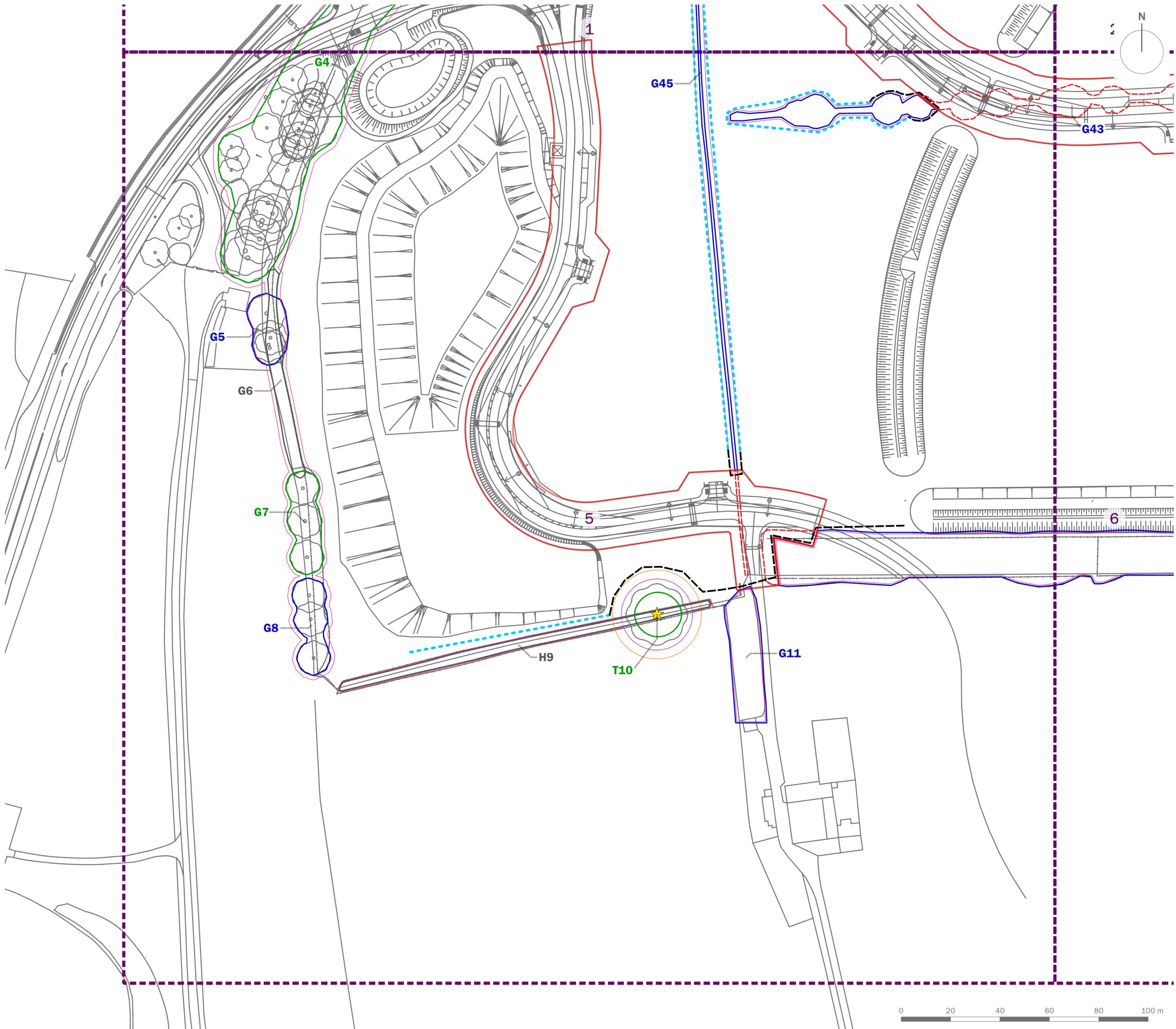
project title
Wykham Park Farm, Spine Road & Ancillary Road Application

drawing title
Plan EDP 1: Tree Protection Plan (Sheet 4 of 8)

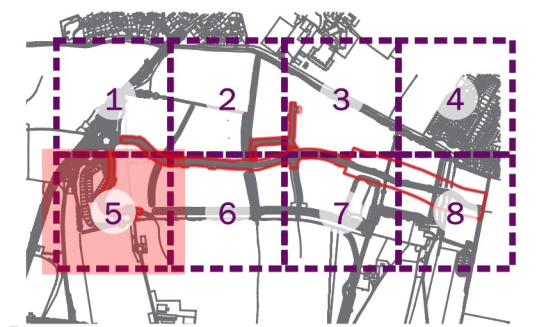
date	15 APRIL 2021	drawn by	TC
drawing number	edp5378_d014b	checked	LT
scale	1:1,500 @ A3	QA	GY



Registered office: 01285 740427 - www.edp-uk.co.uk - info@edp-uk.co.uk



- Site Boundary
- T1 Tree/Group Number
- Tree/Group Canopy
- Tree Stem
- Root Protection Area
- Category A: Trees of high quality and value
- Category B: Trees of moderate quality and value
- Category C: Trees of low quality and value
- Category U: Trees of poor quality and value
- Trees to be Removed
- Veteran Tree
- Veteran Tree Buffer
- Protective Fencing in accordance with BS 5837:2012
- Low Impact Protective Fencing in accordance with BS 5837:2012



client
L&Q Estates Ltd

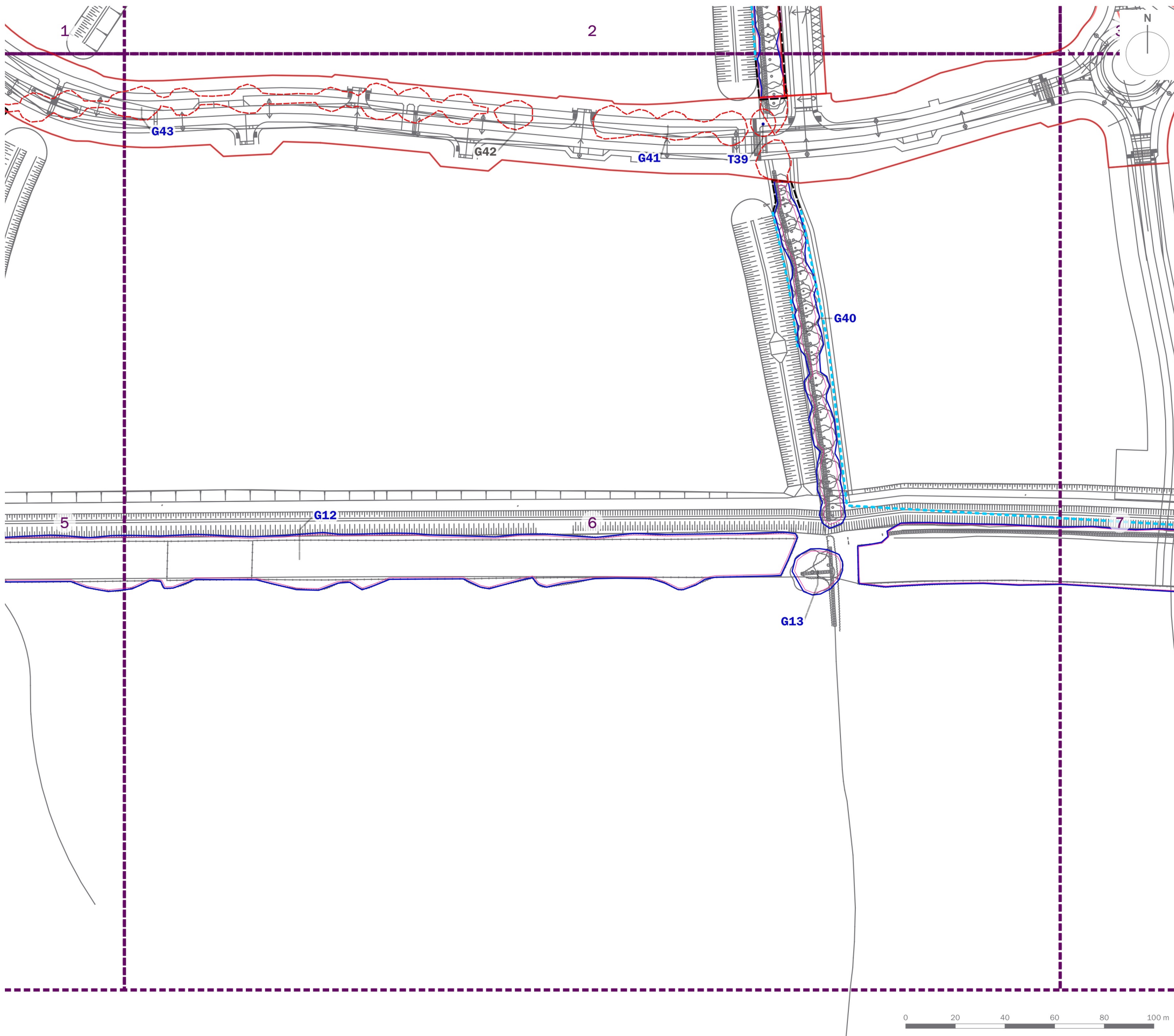
project title
Wykham Park Farm, Spine Road & Ancillary Road Application

drawing title
Plan EDP 1: Tree Protection Plan (Sheet 5 of 8)

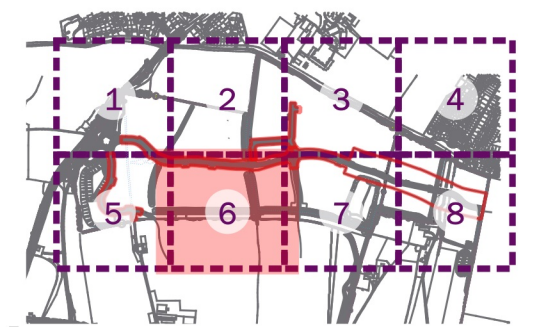
date	15 APRIL 2021	drawn by	TC
drawing number	edp5378_d014b	checked	LT
scale	1:1,500 @ A3	QA	GY



Registered office: 01285 740427 - www.edp-uk.co.uk - info@edp-uk.co.uk



- Site Boundary
- T1 Tree/Group Number
- Tree/Group Canopy
- Tree Stem
- Root Protection Area
- Category A: Trees of high quality and value
- Category B: Trees of moderate quality and value
- Category C: Trees of low quality and value
- Category U: Trees of poor quality and value
- Trees to be Removed
- ★ Veteran Tree
- Veteran Tree Buffer
- Protective Fencing in accordance with BS 5837:2012
- Low Impact Protective Fencing in accordance with BS 5837:2012



client
L&Q Estates Ltd

project title
Wykham Park Farm, Spine Road & Ancillary Road Application

drawing title
Plan EDP 1: Tree Protection Plan (Sheet 6 of 8)

date	15 APRIL 2021	drawn by	TC
drawing number	edp5378_d014b	checked	LT
scale	1:1,500 @ A3	QA	GY



Registered office: 01285 740427 - www.edp-uk.co.uk - info@edp-uk.co.uk

