

APPENDIX 2

Information Returned as Part of the Desk Study

Sharing environmental information in Berkshire and Oxfordshire

BIODIVERSITY REPORT

Site: Bicester Heritage

TVERC Ref: TVERC/18/095

Prepared for: Ecology Solutions

On: 21/05/2018

By: Thames Valley Environmental Records Centre
01865 815 451
datasearch@tverc.org
www.tverc.org

This report should not to be passed on to third parties or published without prior permission of TVERC.

Please be aware that printing maps from this report requires an appropriate OS licence.



TABLE OF CONTENTS

The following are included in this report:

GENERAL INFORMATION:

- Terms & Conditions
- Species data statements

PROTECTED & NOTABLE SPECIES INFORMATION:

- Table of legally protected and notable species within 3x4km search area
- Table of Invasive species records within 3x4km search area
- Species status key
- Data origin key

DESIGNATED WILDLIFE SITE INFORMATION:

- Map of non-statutory designated wildlife sites within 5x6km search area
- Descriptions/citations for designated wildlife sites
- Designated wildlife sites guidance

TERMS AND CONDITIONS

The copyright for this document and the information provided is retained by Thames Valley Environmental Records Centre. The copyright for some of the species data will be held by a recording group or individual recorder. Where this is the case, and the group or individual providing the data is known, the data origin will be given in the species table.

TVERC must be acknowledged if any part of this report or data derived from it is used in a report. The whole document may be used as an appendix within your report.

The data in this report can only be used for the project for which it was requested. It cannot be passed on to third parties without permission of TVERC (this excludes reports presented to clients and Local Authorities).

The data should be considered valid for a maximum 12 months from the date on the cover of this report. If the data is to be used after that time an update should be requested. The data must not be added to any permanent database system.

The absence of any species or habitat data for any site, area or location does not mean that any species or habitat is not present.

MAPS

To reproduce the Ordnance Survey mapping you must hold a relevant licence for the use of Ordnance Survey mapping or it can be copied at a printers or copyshop that holds a licence to carry out search work (see the Ordnance Survey website).

DATA STATEMENTS

STATEMENT ON OXFORDSHIRE BAT GROUP DATA

TVERC has agreed an exchange of data with Oxfordshire Bat Group (OBG) which enables us to provide records belonging to them with the grid reference given to 1 km precision. Such records are indicated by the term "Confidential, refer to OBG for further details" in the location column and OBG in the data origin column of the species table. Enquirers are recommended to contact OBG for further information.

David Endacott
27 Hedge Hill Road
East Challow
Wantage
Oxon
OX12 9SD

davidendacott@hotmail.com

STATEMENT ON BIRD RECORDS IN OXFORDSHIRE (DATA MARKED AS OOS" IN THE DATA ORIGIN COLUMN

The majority of bird records in Oxfordshire, except those in the north of the county, have been provided by the Oxford Ornithological Society. Such records have a value of OOS in the data origin column . Please note that:

- a. Not all species are subject to the same degree of recording; the absence of records of a species in a given geographical area does not necessarily indicate absence of that species.
- b. Not all parts of the county are subject to the same degree of recording; the absence of records for a given area does not necessarily indicate the absence of bird species.
- c. Records of species regarded as sensitive have been provided with reduced information about location. Any requests for more precise information about the location of such "confidential" sites should be addressed directly to OOS (www.oos.org.uk) You can use the following email contacts chairman@oos.org.uk (the chairman) and ian@recorder.fsnet.co.uk (the county bird recorder).

STATEMENT ON WILDLIFE TRUST WATER VOLE DATA

Since 2008 data has been collected as positive or negative sections of watercourses. Positive sections crossing into search areas are included within the data. These are shown with the central grid reference for the stretch of watercourse. This may fall outside the search area but the stretch will be at least partly within the search area. The location information shows the beginning and end points of the stretch of watercourse.

USE OF NBN GATEWAY DATA

Commercial organisations and members of the public may refer to the National Biodiversity Network (NBN) Gateway for wildlife records and habitat and designated site information for their own private use.

The NBN Gateway's Terms and Conditions state "*You may not republish wholesale the material, data and/or information made available to you, or exploit it for commercial or academic research purposes without first obtaining written permission from the relevant data provider*". This means that environmental consultants cannot use NBN data in ecology reports for planning applications unless they have obtained written permission from all the data providers. If NBN Gateway data are also provided for this project please make sure that the NBN Gateway's terms and conditions are followed precisely.

The National Planning Policy Framework states that "planning policies and decisions should be based on up-to date information about the natural environment and other characteristics of the area". The NBN Gateway does not hold the most up-to-date, comprehensive or highest resolution information on protected and notable species, local sites or habitats in Berkshire and Oxfordshire.

TVERC have advised planning authorities in Berkshire and Oxfordshire that ecology reports using only NBN data should not usually be validated and the NBN has requested that suspected breaches of NBN terms and conditions are reported to the NBN Data Access Officer, who will take appropriate action. Further detail is available on our website: <http://www.tverc.org/cms/content/ecological-survey-reports-planning-applications>.

STATEMENT OIN GRID REFERENCES

The following types of grid references are provided:

- Six figure grid references. Many of these will be an assigned relatively central grid reference for a site though with small sites the assigned grid reference for a site could be close to the edge. The record may have come from anywhere within the site. Where additional location information is provided the reference may be more accurate or central to a subsite within the larger site. Where the location is not site based, the grid reference should be within 100 metres of the location.
- Four figure grid references. Generally these are 1km square records often with some location information to give an idea of which part of the 1km square the record was found. Sometime this information can be quite accurate. Where a large site is referred to the location should be in that part of the 1km square that is within the site. In some case these may be tetrad records with grid reference referring to a 2km x 2km square. This includes some confidential records from Oxford Ornithological Society. Other tetrad data is rarely included.
- Eight and ten figure grid references: These are generally accurately worked out to the location where the species was found. However for small and narrow sites eight figure grid references may be used as a central grid reference for a site.

- TVERC intends to start tagging data to qualify these grid references but at present only a limited amount of qualification is provided. 1km square records are tagged as 1km record and 2km square records are tagged as 2km record.

Taxon Name	Common Name	Abundance / Sex / Stage	Date	Grid Ref.	Grid Ref. Qualifier	Location	Type of Record	Data Origin	European Directives	UK Legislation	NERC s41	Other Designations
Amphibians												
Smooth Newt	Lissotriton vulgaris	1 Male	07/04/2009	SP59872520		Stratton Audley Quarry		OLWS		WACA-Sch5-s9.5a		
Smooth Newt	Lissotriton vulgaris	2 Females	07/04/2009	SP59872520		Stratton Audley Quarry		OLWS		WACA-Sch5-s9.5a		
Smooth Newt	Lissotriton vulgaris	2 Females	07/04/2009	SP59912525		Stratton Audley Quarry		OLWS		WACA-Sch5-s9.5a		
Smooth Newt	Lissotriton vulgaris		26/02/1991	SP603251		Stratton Audley Quarry	field record	OBRC		WACA-Sch5-s9.5a		
Great Crested Newt	Triturus cristatus	1 Male	07/04/2009	SP59872520		Stratton Audley Quarry		OLWS	HabDir-A2np HabDir-A4	HabReg-Sch2 WACA-Sch5-s9.4b/s9.4c/s9.5a	NERC-S41	
Great Crested Newt	Triturus cristatus	1 Female	07/04/2009	SP59912525		Stratton Audley Quarry		OLWS	HabDir-A2np HabDir-A4	HabReg-Sch2 WACA-Sch5-s9.4b/s9.4c/s9.5a	NERC-S41	
Great Crested Newt	Triturus cristatus		20/03/1988	SP599252		Stratton Audley Quarry	field record	LN	HabDir-A2np HabDir-A4	HabReg-Sch2 WACA-Sch5-s9.4b/s9.4c/s9.5a	NERC-S41	
Great Crested Newt	Triturus cristatus	Immatures	19/06/1992	SP599252		Stratton Audley Quarry	field record	LN	HabDir-A2np HabDir-A4	HabReg-Sch2 WACA-Sch5-s9.4b/s9.4c/s9.5a	NERC-S41	
Great Crested Newt	Triturus cristatus		20/03/1988	SP603251		Stratton Audley Quarry	field record	LN	HabDir-A2np HabDir-A4	HabReg-Sch2 WACA-Sch5-s9.4b/s9.4c/s9.5a	NERC-S41	
Great Crested Newt	Triturus cristatus	1 Adult Male	27/04/2004	SP61782308		Upper Laurels Farm, Launton	egg	BBOWT	HabDir-A2np HabDir-A4	HabReg-Sch2 WACA-Sch5-s9.4b/s9.4c/s9.5a	NERC-S41	
Common Frog	Rana temporaria	Spawn	25/03/2016	SP5881025179		Bicester, OX27 8FB	field record	ARGUK	HabDir-A5	WACA-Sch5-s9.5a		
Common Frog	Rana temporaria	1	31/07/2008	SP605246		Stratton Audley Quarry		OLWS	HabDir-A5	WACA-Sch5-s9.5a		
Common Frog	Rana temporaria	2	31/07/2008	SP605246		Stratton Audley Quarry		OLWS	HabDir-A5	WACA-Sch5-s9.5a		
Birds												
Mute Swan	Cygnus olor	2	20/06/2003	SP602250		Stratton Audley Quarry		OLWS				Bird-Amber
Mute Swan	Cygnus olor	2	05/08/2003	SP602250		Stratton Audley Quarry		OLWS				Bird-Amber
Mute Swan	Cygnus olor	2	11/06/2003	SP602250		Stratton Audley Quarry		OLWS				Bird-Amber
Mallard	Anas platyrhynchos	1 Female; 5 Juveniles	20/06/2003	SP602250		Stratton Audley Quarry		OLWS				Bird-Amber
Mallard	Anas platyrhynchos		11/06/2003	SP602250		Stratton Audley Quarry		OLWS				Bird-Amber
Mallard	Anas platyrhynchos		05/08/2003	SP602250		Stratton Audley Quarry		OLWS				Bird-Amber
Mallard	Anas platyrhynchos		31/07/2008	SP602250		Stratton Audley Quarry		OLWS				Bird-Amber
Mallard	Anas platyrhynchos		02/06/2004	SP602251		Stratton Audley Quarry	field record	OBRC				Bird-Amber
Grey Partridge	Perdix perdix	10 Individuals	10/07/2006	SP5725	1 km record	Caversfield	field record	OOS			NERC-S41	Bird-Red
Grey Partridge	Perdix perdix	17 Individuals	10/07/2006	SP5725	1 km record	Caversfield	field record	OOS			NERC-S41	Bird-Red
Grey Partridge	Perdix perdix	2	11/06/2003	SP602250		Stratton Audley Quarry		OLWS			NERC-S41	Bird-Red
Grey Partridge	Perdix perdix		31/07/2008	SP602250		Stratton Audley Quarry		OLWS			NERC-S41	Bird-Red
Red Kite	Milvus milvus	1 Individual	28/07/2006	SP5725	1 km record	Caversfield	field record	OOS	BirdsDir-A1	WACA-Sch1-p1		RL-Global-post2001-NT
Red Kite	Milvus milvus	1 Individual	26/02/2006	SP5725	1 km record	Caversfield	field record	OOS	BirdsDir-A1	WACA-Sch1-p1		RL-Global-post2001-NT
Red Kite	Milvus milvus	1 Individual	26/02/2006	SP5725	1 km record	Caversfield	field record	OOS	BirdsDir-A1	WACA-Sch1-p1		RL-Global-post2001-NT
Red Kite	Milvus milvus	1 Individual	18/07/2006	SP5823	1 km record	Bicester	field record	OOS	BirdsDir-A1	WACA-Sch1-p1		RL-Global-post2001-NT
Red Kite	Milvus milvus	1 Individual	21/02/2006	SP5825	1 km record	Caversfield	field record	OOS	BirdsDir-A1	WACA-Sch1-p1		RL-Global-post2001-NT
Red Kite	Milvus milvus	1 Individual	21/02/2006	SP5825	1 km record	Caversfield	field record	OOS	BirdsDir-A1	WACA-Sch1-p1		RL-Global-post2001-NT
Red Kite	Milvus milvus	2	19/07/2012	SP601241		Bicester Airfield		OLWS	BirdsDir-A1	WACA-Sch1-p1		RL-Global-post2001-NT
Kestrel	Falco tinnunculus	1 Individual	10/10/2006	SP5725	1 km record	Caversfield	field record	OOS				Bird-Amber
Kestrel	Falco tinnunculus	1 Nest; 2 Individuals	15/05/2006	SP5725	1 km record	Caversfield	field record	OOS				Bird-Amber
Kestrel	Falco tinnunculus	1	19/07/2012	SP601241		Bicester Airfield		OLWS				Bird-Amber
Kestrel	Falco tinnunculus	1	31/07/2008	SP601250		Stratton Audley Quarry		OLWS				Bird-Amber
Kestrel	Falco tinnunculus	1	31/07/2008	SP602250		Stratton Audley Quarry		OLWS				Bird-Amber
Kestrel	Falco tinnunculus		28/05/2009	SP602250		Stratton Audley Quarry		OLWS				Bird-Amber
Kestrel	Falco tinnunculus	1	20/06/2003	SP602250		Stratton Audley Quarry		OLWS				Bird-Amber
Kestrel	Falco tinnunculus	1	11/06/2003	SP602250		Stratton Audley Quarry		OLWS				Bird-Amber
Kestrel	Falco tinnunculus		15/09/1982	SP603251		Stratton Audley Quarry	field record	OBRC				Bird-Amber
Kestrel	Falco tinnunculus		23/09/1987	SP603251		Stratton Audley Quarry	field record	OBRC				Bird-Amber

Taxon Name	Common Name	Abundance / Sex / Stage	Date	Grid Ref.	Grid Ref. Qualifier	Location	Type of Record	Data Origin	European Directives	UK Legislation	NERC s41	Other Designations
<i>Kestrel</i>	Falco tinnunculus	1	10/06/2003	SP6224	1 km record	Poundon Hill	field record	OOS				Bird-Amber
<i>Hobby</i>	Falco subbuteo	1 Individual	15/09/2006	SP52S	1 km record	Confidential, refer to OOS for further details	field record	OOS		WACA-Sch1-p1		
<i>Hobby</i>	Falco subbuteo	1 Individual	28/08/2006	SP52S	1 km record	Confidential, refer to OOS for further details	field record	OOS		WACA-Sch1-p1		
<i>Hobby</i>	Falco subbuteo	2 Individuals	15/08/2006	SP52S	1 km record	Confidential, refer to OOS for further details	field record	OOS		WACA-Sch1-p1		
<i>Hobby</i>	Falco subbuteo	1 Individual	10/06/2006	SP52W	1 km record	Confidential, refer to OOS for further details	field record	OOS		WACA-Sch1-p1		
<i>Hobby</i>	Falco subbuteo	1	04/07/2003	SP62H	1 km record	Confidential, refer to OOS for further details	field record	OOS		WACA-Sch1-p1		
<i>Peregrine</i>	Falco peregrinus	1 Individual	26/02/2006	SP52S	1 km record	Confidential, refer to OOS for further details	field record	OOS	BirdsDir-A1	WACA-Sch1-p1		
<i>Little Ringed Plover</i>	Charadrius dubius	4	28/05/2009	SP602250		Stratton Audley Quarry		OLWS		WACA-Sch1-p1		
<i>Little Ringed Plover</i>	Charadrius dubius	1	31/07/2008	SP602250		Stratton Audley Quarry		OLWS		WACA-Sch1-p1		
<i>Little Ringed Plover</i>	Charadrius dubius	2	11/06/2003	SP602250		Stratton Audley Quarry		OLWS		WACA-Sch1-p1		
<i>Little Ringed Plover</i>	Charadrius dubius		30/07/2009	SP602250		Stratton Audley Quarry		OLWS		WACA-Sch1-p1		
<i>Little Ringed Plover</i>	Charadrius dubius		15/05/1996	SP602251		Stratton Audley Quarry	field record	OBRC		WACA-Sch1-p1		
<i>Lapwing</i>	Vanellus vanellus	50 Individuals	26/02/2006	SP572S	1 km record	Caversfield	field record	OOS			NERC-S41	Bird-Red
<i>Lapwing</i>	Vanellus vanellus	50 Individuals	26/02/2006	SP572S	1 km record	Caversfield	field record	OOS			NERC-S41	Bird-Red
<i>Lapwing</i>	Vanellus vanellus	300 Individuals	30/12/2006	SP592S	1 km record	Balscote: Balscote Quarry	field record	OOS			NERC-S41	Bird-Red
<i>Lapwing</i>	Vanellus vanellus		09/07/2007	SP598253			field record	EC			NERC-S41	Bird-Red
<i>Lapwing</i>	Vanellus vanellus	6	28/05/2009	SP602250		Stratton Audley Quarry		OLWS			NERC-S41	Bird-Red
<i>Lapwing</i>	Vanellus vanellus	7	10/06/2003	SP6224	1 km record	Poundon Hill	field record	OOS			NERC-S41	Bird-Red
<i>Lapwing</i>	Vanellus vanellus	3	14/05/2003	SP6224	1 km record	Poundon Hill	field record	OOS			NERC-S41	Bird-Red
<i>Common Sandpiper</i>	Actitis hypoleucos	1	31/07/2008	SP602250		Stratton Audley Quarry		OLWS				Bird-Amber
<i>Snipe</i>	Gallinago gallinago	19 Individuals	30/12/2006	SP592S	1 km record	Balscote: Balscote Quarry	field record	OOS				Bird-Amber
<i>Snipe</i>	Gallinago gallinago	1	31/07/2008	SP601250		Stratton Audley Quarry		OLWS				Bird-Amber
<i>Snipe</i>	Gallinago gallinago		15/09/1982	SP603251		Stratton Audley Quarry	field record	OBRC				Bird-Amber
<i>Redshank</i>	Tringa totanus	2	28/05/2009	SP602250		Stratton Audley Quarry		OLWS				Bird-Amber
<i>Greenshank</i>	Tringa nebularia	2 Individuals	03/08/2006	SP5724	1 km record	Caversfield	field record	OOS		WACA-Sch1-p1		Bird-Amber
<i>Green Sandpiper</i>	Tringa ochropus	1 Individual	07/12/2006	SP572S	1 km record	Bucknell	field record	OOS		WACA-Sch1-p1		Bird-Amber
<i>Green Sandpiper</i>	Tringa ochropus	1 Individual	15/12/2006	SP572S	1 km record	Bucknell	field record	OOS		WACA-Sch1-p1		Bird-Amber
<i>Green Sandpiper</i>	Tringa ochropus	1 Individual	30/12/2006	SP592S	1 km record	Balscote: Balscote Quarry	field record	OOS		WACA-Sch1-p1		Bird-Amber
<i>Green Sandpiper</i>	Tringa ochropus	1	31/07/2008	SP602250		Stratton Audley Quarry		OLWS		WACA-Sch1-p1		Bird-Amber
<i>Lesser Black-backed Gull</i>	Larus fuscus	30	19/07/2012	SP601241		Bicester Airfield		OLWS				Bird-Amber
<i>Lesser Black-backed Gull</i>	Larus fuscus		05/08/2003	SP602250		Stratton Audley Quarry		OLWS				Bird-Amber
<i>Lesser Black-backed Gull</i>	Larus fuscus		30/07/2009	SP602250		Stratton Audley Quarry		OLWS				Bird-Amber
<i>Herring Gull</i>	Larus argentatus	30	19/07/2012	SP601241		Bicester Airfield		OLWS			NERC-S41	Bird-Red
<i>Great Black-backed Gull</i>	Larus marinus	1 Individual	30/12/2006	SP592S	1 km record	Balscote: Balscote Quarry	field record	OOS				Bird-Amber
<i>Black-headed Gull</i>	Chroicocephalus ridibundus	3	19/07/2012	SP601241		Bicester Airfield		OLWS				Bird-Amber
<i>Black-headed Gull</i>	Chroicocephalus ridibundus		28/05/2009	SP602250		Stratton Audley Quarry		OLWS				Bird-Amber
<i>Black Tern</i>	Chlidonias niger		15/05/1996	SP602251		Stratton Audley Quarry	field record	OBRC	BirdsDir-A1	WACA-Sch1-p1		
<i>Common Tern</i>	Sterna hirundo	Breeding	09/07/2007	SP598253			field record	EC	BirdsDir-A1			Bird-Amber
<i>Common Tern</i>	Sterna hirundo		30/07/2009	SP602250		Stratton Audley Quarry		OLWS	BirdsDir-A1			Bird-Amber
<i>Stock Dove</i>	Columba oenas	2	19/07/2012	SP601241		Bicester Airfield		OLWS				Bird-Amber
<i>Stock Dove</i>	Columba oenas		28/05/2009	SP602250		Stratton Audley Quarry		OLWS				Bird-Amber
<i>Stock Dove</i>	Columba oenas	1	20/06/2003	SP602250		Stratton Audley Quarry		OLWS				Bird-Amber
<i>Stock Dove</i>	Columba oenas	8	11/06/2003	SP602250		Stratton Audley Quarry		OLWS				Bird-Amber
<i>Stock Dove</i>	Columba oenas		31/07/2008	SP602250		Stratton Audley Quarry		OLWS				Bird-Amber
<i>Turtle Dove</i>	Streptopelia turtur		01/06/1998	SP592S	1 km record	Bicester: Bicester Quarry	field record	OOS			NERC-S41	Bird-Red
<i>Turtle Dove</i>	Streptopelia turtur	6	31/07/2008	SP602250		Stratton Audley Quarry		OLWS			NERC-S41	Bird-Red
<i>Tawny Owl</i>	Strix aluco	1 Individual	28/12/2006	SP572S	1 km record	Caversfield	field record	OOS				Bird-Amber
<i>Tawny Owl</i>	Strix aluco	2 Individuals	07/08/2006	SP582S	1 km record	Caversfield	field record	OOS				Bird-Amber
<i>Swift</i>	Apus apus		2009	SP582230		New Road, Bicester	Flying	CSP				Bird-Amber
<i>Swift</i>	Apus apus		2010	SP582230		New Road, Bicester	Flying	CSP				Bird-Amber
<i>Swift</i>	Apus apus	3 Nests	2015	SP58352376		21 Windmill Avenue, Bicester	nest	CSP				Bird-Amber
<i>Swift</i>	Apus apus	3 Nests	2014	SP58352376		21 Windmill Avenue, Bicester	nest	CSP				Bird-Amber

Taxon Name	Common Name	Abundance / Sex / Stage	Date	Grid Ref.	Grid Ref. Qualifier	Location	Type of Record	Data Origin	European Directives	UK Legislation	NERC s41	Other Designations
Swift	Apus apus	12 Adults	01/01/2010-31/12/2010	SP58512376		Windmill Avenue, Bicester	Flying	RSPB				Bird-Amber
Swift	Apus apus		2012	SP58512378		83 Windmill Avenue, Bicester	nest	CSP				Bird-Amber
Swift	Apus apus		2013	SP58512378		83, Windmill Avenue, Bicester	nest	CSP				Bird-Amber
Swift	Apus apus	3 Adults	01/01/2007-31/12/2007	SP58522382		OX26 3XW (Larch Close, Bicester)	Flying	RSPB				Bird-Amber
Swift	Apus apus		2017	SP58552374		Windmill Avenue, Bicester	Flying	CSP				Bird-Amber
Swift	Apus apus		2013	SP58552376		87, Windmill Avenue, Bicester	nest	CSP				Bird-Amber
Swift	Apus apus		2012	SP58552376		87 Windmill Avenue, Bicester	nest	CSP				Bird-Amber
Swift	Apus apus		2010	SP586239		Soutwold Estate, off of Buckingham Road, Banbury	Flying	CSP				Bird-Amber
Swift	Apus apus		2012	SP58932329		6 Nuffield Close, Bicester	nest	CSP				Bird-Amber
Swift	Apus apus		2012	SP58962337		2 Keble Road, Bicester	nest	CSP				Bird-Amber
Swift	Apus apus		2017	SP58982470		Manzel Road, Caversfield	Flying	CSP				Bird-Amber
Swift	Apus apus		2015	SP5899023328		8 Merton Walk, Bicester	nest	CSP				Bird-Amber
Swift	Apus apus		2014	SP5899023328		8 Merton Walk, Bicester	nest	CSP				Bird-Amber
Swift	Apus apus		2012	SP59002331		Merton Walk, Bicester	Flying	CSP				Bird-Amber
Swift	Apus apus		2014	SP59062469		Turnpike Road, Caversfield	Flying	CSP				Bird-Amber
Swift	Apus apus		2017	SP59062469		Turnpike Road, Caversfield	Flying	CSP				Bird-Amber
Swift	Apus apus		2013	SP59062469		Turnpike Road, Caversfield	Flying	CSP				Bird-Amber
Swift	Apus apus	1	19/07/2012	SP601241		Bicester Airfield		OLWS				Bird-Amber
Swift	Apus apus		28/05/2009	SP602250		Stratton Audley Quarry		OLWS				Bird-Amber
Swift	Apus apus		11/06/2003	SP602250		Stratton Audley Quarry		OLWS				Bird-Amber
Swift	Apus apus	1	20/06/2003	SP602250		Stratton Audley Quarry		OLWS				Bird-Amber
Swift	Apus apus		30/07/2009	SP602250		Stratton Audley Quarry		OLWS				Bird-Amber
Kingfisher	Alcedo atthis	1 Individual	10/09/2006	SP52S	1 km record	Confidential, refer to OOS for further details	field record	OOS	BirdsDir-A1	WACA-Sch1-p1		Bird-Amber
Kingfisher	Alcedo atthis		14/08/2003	SP60202345		Bicester Airfield		OLWS	BirdsDir-A1	WACA-Sch1-p1		Bird-Amber
Kingfisher	Alcedo atthis	1	31/07/2008	SP602250		Stratton Audley Quarry		OLWS	BirdsDir-A1	WACA-Sch1-p1		Bird-Amber
Willow Warbler	Phylloscopus trochilus	56	1980	SP597245		Bicester Airfield		LN				Bird-Amber
Willow Warbler	Phylloscopus trochilus		20/06/2003	SP602250		Stratton Audley Quarry		OLWS				Bird-Amber
Willow Warbler	Phylloscopus trochilus	1	05/08/2003	SP602250		Stratton Audley Quarry		OLWS				Bird-Amber
Willow Warbler	Phylloscopus trochilus	20	11/06/2003	SP602250		Stratton Audley Quarry		OLWS				Bird-Amber
Willow Warbler	Phylloscopus trochilus		17/06/2014	SP611231		Land at Grange Farm, Launton	field record	EC				Bird-Amber
Skylark	Alauda arvensis		20/08/2002	SP599252		Stratton Audley Quarry		OLWS			NERC-S41	Bird-Red
Skylark	Alauda arvensis	6	19/07/2012	SP601241		Bicester Airfield		OLWS			NERC-S41	Bird-Red
Skylark	Alauda arvensis	5	31/07/2008	SP601250		Stratton Audley Quarry		OLWS			NERC-S41	Bird-Red
Skylark	Alauda arvensis		28/05/2009	SP602250		Stratton Audley Quarry		OLWS			NERC-S41	Bird-Red
Skylark	Alauda arvensis	4	20/06/2003	SP602250		Stratton Audley Quarry		OLWS			NERC-S41	Bird-Red
Skylark	Alauda arvensis	2	11/06/2003	SP602250		Stratton Audley Quarry		OLWS			NERC-S41	Bird-Red
Skylark	Alauda arvensis		20/08/2002	SP602251		Stratton Audley Quarry		OLWS			NERC-S41	Bird-Red
Skylark	Alauda arvensis	1	04/07/2003	SP6224	1 km record	Poundon Hill	field record	OOS			NERC-S41	Bird-Red
Skylark	Alauda arvensis	4	10/06/2003	SP6224	1 km record	Poundon Hill	field record	OOS			NERC-S41	Bird-Red
Skylark	Alauda arvensis	8	04/07/2003	SP6224	1 km record	Poundon Hill	field record	OOS			NERC-S41	Bird-Red
Skylark	Alauda arvensis	1	10/06/2003	SP6224	1 km record	Poundon Hill	field record	OOS			NERC-S41	Bird-Red
Skylark	Alauda arvensis	7	14/05/2003	SP6224	1 km record	Poundon Hill	field record	OOS			NERC-S41	Bird-Red
House Martin	Delichon urbicum	1	19/07/2012	SP601241		Bicester Airfield		OLWS				Bird-Amber
Meadow Pipit	Anthus pratensis	40 Individuals	26/02/2006	SP5725	1 km record	Caversfield	field record	OOS				Bird-Amber
Meadow Pipit	Anthus pratensis	40 Individuals	26/02/2006	SP5725	1 km record	Caversfield	field record	OOS				Bird-Amber
Meadow Pipit	Anthus pratensis	1	19/07/2012	SP601241		Bicester Airfield		OLWS				Bird-Amber
Yellow Wagtail	Motacilla flava subsp. flavissima	15 Individuals	29/09/2006	SP5725	1 km record	Caversfield	field record	OOS			NERC-S41	Bird-Red
Grey Wagtail	Motacilla cinerea	2 Individuals	15/10/2006	SP5725	1 km record	Caversfield	field record	OOS				Bird-Red
Grey Wagtail	Motacilla cinerea		28/05/2009	SP602250		Stratton Audley Quarry		OLWS				Bird-Red

Taxon Name	Common Name	Abundance / Sex / Stage	Date	Grid Ref.	Grid Ref. Qualifier	Location	Type of Record	Data Origin	European Directives	UK Legislation	NERC s41	Other Designations
Dunno	Prunella modularis		2016 - 2017	SP590241		Land adjacent to Skimmingdish Lane, Bicester	field record	EC			NERC-S41	Bird-Amber
Dunno	Prunella modularis		12/04/2000-31/05/2000	SP591242		Caversfield Park, Bicester	field record	EC			NERC-S41	Bird-Amber
Dunno	Prunella modularis	44	1980	SP597245		Bicester Airfield		LN			NERC-S41	Bird-Amber
Dunno	Prunella modularis	1	19/07/2012	SP601241		Bicester Airfield		OLWS			NERC-S41	Bird-Amber
Dunno	Prunella modularis		30/07/2009	SP602250		Stratton Audley Quarry		OLWS			NERC-S41	Bird-Amber
Dunno	Prunella modularis		28/05/2009	SP602250		Stratton Audley Quarry		OLWS			NERC-S41	Bird-Amber
Dunno	Prunella modularis		11/06/2003	SP602250		Stratton Audley Quarry		OLWS			NERC-S41	Bird-Amber
Dunno	Prunella modularis		20/06/2003	SP602250		Stratton Audley Quarry		OLWS			NERC-S41	Bird-Amber
Dunno	Prunella modularis		31/07/2008	SP602250		Stratton Audley Quarry		OLWS			NERC-S41	Bird-Amber
Redstart	Phoenicurus phoenicurus	1 Individual	06/08/2006	SP5725	1 km record	Caversfield	field record	OOS				Bird-Amber
Song Thrush	Turdus philomelos		2016 - 2017	SP590241		Land adjacent to Skimmingdish Lane, Bicester	field record	EC			NERC-S41	Bird-Red
Song Thrush	Turdus philomelos	10	1980	SP597245		Bicester Airfield		LN			NERC-S41	Bird-Red
Song Thrush	Turdus philomelos	1	19/07/2012	SP601241		Bicester Airfield		OLWS			NERC-S41	Bird-Red
Song Thrush	Turdus philomelos		28/05/2009	SP602250		Stratton Audley Quarry		OLWS			NERC-S41	Bird-Red
Redwing	Turdus iliacus	1	1980	SP597245		Bicester Airfield		LN		WACA-Sch1-p1		Bird-Red
Willow Tit	Poecile montana	4	1980	SP597245		Bicester Airfield		LN			NERC-S41	Bird-Red
Marsh Tit	Poecile palustris	2	1980	SP597245		Bicester Airfield		LN			NERC-S41	Bird-Red
Marsh Tit	Poecile palustris		05/08/2003	SP602250		Stratton Audley Quarry		OLWS			NERC-S41	Bird-Red
Starling	Sturnus vulgaris		12/04/2000-31/05/2000	SP591242		Caversfield Park, Bicester	field record	EC			NERC-S41	Bird-Red
Starling	Sturnus vulgaris	1	1980	SP597245		Bicester Airfield		LN			NERC-S41	Bird-Red
Starling	Sturnus vulgaris	50	27/09/2006	SP59902537		Stratton Audley Quarry		OLWS			NERC-S41	Bird-Red
Starling	Sturnus vulgaris	1	19/07/2012	SP601241		Bicester Airfield		OLWS			NERC-S41	Bird-Red
Starling	Sturnus vulgaris		28/05/2009	SP602250		Stratton Audley Quarry		OLWS			NERC-S41	Bird-Red
Starling	Sturnus vulgaris		30/07/2009	SP602250		Stratton Audley Quarry		OLWS			NERC-S41	Bird-Red
Starling	Sturnus vulgaris		17/06/2014	SP611231		Land at Grange Farm, Launton	field record	EC			NERC-S41	Bird-Red
Starling	Sturnus vulgaris	1	14/05/2003	SP6224	1 km record	Poundon Hill	field record	OOS			NERC-S41	Bird-Red
Starling	Sturnus vulgaris	2	14/05/2003	SP6224	1 km record	Poundon Hill	field record	OOS			NERC-S41	Bird-Red
House Sparrow	Passer domesticus		2016 - 2017	SP590241		Land adjacent to Skimmingdish Lane, Bicester	field record	EC			NERC-S41	Bird-Red
House Sparrow	Passer domesticus		30/07/2009	SP602250		Stratton Audley Quarry		OLWS			NERC-S41	Bird-Red
House Sparrow	Passer domesticus		17/06/2014	SP611231		Land at Grange Farm, Launton	field record	EC			NERC-S41	Bird-Red
Tree Sparrow	Passer montanus	6	1980	SP597245		Bicester Airfield		LN			NERC-S41	Bird-Red
Linnet	Linaria cannabina	50 Individuals	18/12/2006	SP5725	1 km record	Caversfield	field record	OOS			NERC-S41	Bird-Red
Linnet	Linaria cannabina		30/07/2009	SP602250		Stratton Audley Quarry		OLWS			NERC-S41	Bird-Red
Linnet	Linaria cannabina		28/05/2009	SP602250		Stratton Audley Quarry		OLWS			NERC-S41	Bird-Red
Linnet	Linaria cannabina		11/06/2003	SP602250		Stratton Audley Quarry		OLWS			NERC-S41	Bird-Red
Linnet	Linaria cannabina		20/06/2003	SP602250		Stratton Audley Quarry		OLWS			NERC-S41	Bird-Red
Linnet	Linaria cannabina		05/08/2003	SP602250		Stratton Audley Quarry		OLWS			NERC-S41	Bird-Red
Linnet	Linaria cannabina		31/07/2008	SP602250		Stratton Audley Quarry		OLWS			NERC-S41	Bird-Red
Linnet	Linaria cannabina		31/07/2008	SP605246		Stratton Audley Quarry		OLWS			NERC-S41	Bird-Red
Bullfinch	Pyrrhula pyrrhula		2016 - 2017	SP590241		Land adjacent to Skimmingdish Lane, Bicester	field record	EC			NERC-S41	Bird-Amber
Bullfinch	Pyrrhula pyrrhula	2	13/07/2012	SP596230		Jarvis Lane		OLWS			NERC-S41	Bird-Amber
Bullfinch	Pyrrhula pyrrhula	38	1980	SP597245		Bicester Airfield		LN			NERC-S41	Bird-Amber
Bullfinch	Pyrrhula pyrrhula	2	19/07/2012	SP601241		Bicester Airfield		OLWS			NERC-S41	Bird-Amber
Bullfinch	Pyrrhula pyrrhula		28/05/2009	SP602250		Stratton Audley Quarry		OLWS			NERC-S41	Bird-Amber
Bullfinch	Pyrrhula pyrrhula	1	11/06/2003	SP602250		Stratton Audley Quarry		OLWS			NERC-S41	Bird-Amber
Bullfinch	Pyrrhula pyrrhula		31/07/2008	SP602250		Stratton Audley Quarry		OLWS			NERC-S41	Bird-Amber
Bullfinch	Pyrrhula pyrrhula		02/06/2004	SP602251		Stratton Audley Quarry	field record	OBRC			NERC-S41	Bird-Amber
Bullfinch	Pyrrhula pyrrhula		31/07/2008	SP605246		Stratton Audley Quarry		OLWS			NERC-S41	Bird-Amber
Yellowhammer	Emberiza citrinella	17	1980	SP597245		Bicester Airfield		LN			NERC-S41	Bird-Red
Yellowhammer	Emberiza citrinella		28/05/2009	SP602250		Stratton Audley Quarry		OLWS			NERC-S41	Bird-Red
Yellowhammer	Emberiza citrinella	8	11/06/2003	SP602250		Stratton Audley Quarry		OLWS			NERC-S41	Bird-Red
Yellowhammer	Emberiza citrinella	3	10/06/2003	SP6224	1 km record	Poundon Hill	field record	OOS			NERC-S41	Bird-Red
Yellowhammer	Emberiza citrinella	5	14/05/2003	SP6224	1 km record	Poundon Hill	field record	OOS			NERC-S41	Bird-Red

Taxon Name	Common Name	Abundance / Sex / Stage	Date	Grid Ref.	Grid Ref. Qualifier	Location	Type of Record	Data Origin	European Directives	UK Legislation	NERC s41	Other Designations
<i>Yellowhammer</i>	<i>Emberiza citrinella</i>	11	04/07/2003	SP6224	1 km record	Poundon Hill	field record	OOS			NERC-S41	Bird-Red
<i>Yellowhammer</i>	<i>Emberiza citrinella</i>	1	04/07/2003	SP6224	1 km record	Poundon Hill	field record	OOS			NERC-S41	Bird-Red
<i>Yellowhammer</i>	<i>Emberiza citrinella</i>	9	14/05/2003	SP6224	1 km record	Poundon Hill	field record	OOS			NERC-S41	Bird-Red
<i>Reed Bunting</i>	<i>Emberiza schoeniclus</i>	2 Individuals	26/02/2006	SP5725	1 km record	Caversfield	field record	OOS			NERC-S41	Bird-Amber
<i>Reed Bunting</i>	<i>Emberiza schoeniclus</i>	2 Females	26/02/2006	SP5725	1 km record	Caversfield	field record	OOS			NERC-S41	Bird-Amber
<i>Reed Bunting</i>	<i>Emberiza schoeniclus</i>		30/07/2009	SP602250		Stratton Audley Quarry		OLWS			NERC-S41	Bird-Amber
<i>Reed Bunting</i>	<i>Emberiza schoeniclus</i>		31/07/2008	SP602250		Stratton Audley Quarry		OLWS			NERC-S41	Bird-Amber
<i>Reed Bunting</i>	<i>Emberiza schoeniclus</i>	8	11/06/2003	SP602250		Stratton Audley Quarry		OLWS			NERC-S41	Bird-Amber
<i>Reed Bunting</i>	<i>Emberiza schoeniclus</i>	8	28/05/2009	SP602250		Stratton Audley Quarry		OLWS			NERC-S41	Bird-Amber
<i>Reed Bunting</i>	<i>Emberiza schoeniclus</i>		02/06/2004	SP602251		Stratton Audley Quarry	field record	OBRC			NERC-S41	Bird-Amber
Higher Plants - Flowering Plants												
<i>Bluebell</i>	<i>Hyacinthoides non-scripta</i>		25/04/2009	SP60172513		Stratton Audley Quarry	field record	LN		WACA-Sch8		
<i>Galingale</i>	<i>Cyperus longus</i>		21/06/2006-09/07/2007	SP598253			field record	EC				Status-NS RL-Eng-post2001-NT RL-GB-post2001-NT
<i>Quaking-grass</i>	<i>Briza media</i>	R (DAFOR)	31/07/2008	SP601250		Stratton Audley Quarry		OLWS				RL-Eng-post2001-NT
<i>Lesser Spearwort</i>	<i>Ranunculus flammula</i>		05/07/2013	SP600236		Skimmingdish Lane, Bicester	field record	EC				RL-Eng-post2001-VU
<i>Lesser Spearwort</i>	<i>Ranunculus flammula</i>		08/07/1981	SP603251		Stratton Audley Quarry	field record	OBRC				RL-Eng-post2001-VU
<i>Wild Strawberry</i>	<i>Fragaria vesca</i>	R (DAFOR)	15/08/2014	SP597253		Bicester Airfield		OLWS				RL-Eng-post2001-NT
<i>Hoary Plantain</i>	<i>Plantago media</i>	O (DAFOR)	15/08/2014	SP595251		Bicester Airfield		OLWS				RL-Eng-post2001-NT
<i>Hoary Plantain</i>	<i>Plantago media</i>	R (DAFOR)	15/08/2014	SP597249		Bicester Airfield		OLWS				RL-Eng-post2001-NT
<i>Hoary Plantain</i>	<i>Plantago media</i>	O (DAFOR)	15/08/2014	SP597253		Bicester Airfield		OLWS				RL-Eng-post2001-NT
<i>Hoary Plantain</i>	<i>Plantago media</i>	R (DAFOR)	19/07/2012	SP59822379		Bicester Airfield		OLWS				RL-Eng-post2001-NT
<i>Hoary Plantain</i>	<i>Plantago media</i>	R (DAFOR)	03/08/2012	SP60162405		Bicester Airfield		OLWS				RL-Eng-post2001-NT
<i>Hoary Plantain</i>	<i>Plantago media</i>	R (DAFOR)	03/08/2012	SP60162405		Bicester Airfield		OLWS				RL-Eng-post2001-NT
<i>Heath Speedwell</i>	<i>Veronica officinalis</i>	O (DAFOR)	03/08/2012	SP60162405		Bicester Airfield		OLWS				RL-Eng-post2001-NT
<i>Heath Speedwell</i>	<i>Veronica officinalis</i>	R (DAFOR)	03/08/2012	SP60162405		Bicester Airfield		OLWS				RL-Eng-post2001-NT
<i>Basil Thyme</i>	<i>Clinopodium acinos</i>	LF (DAFOR)	15/08/2014	SP597253		Bicester Airfield		OLWS			NERC-S41	RL-Eng-post2001-VU RL-GB-post2001-VU
<i>Basil Thyme</i>	<i>Clinopodium acinos</i>	R (DAFOR)	19/07/2012	SP59822379		Bicester Airfield		OLWS			NERC-S41	RL-Eng-post2001-VU RL-GB-post2001-VU
<i>Basil Thyme</i>	<i>Clinopodium acinos</i>	O (DAFOR)	03/08/2012	SP60162405		Bicester Airfield		OLWS			NERC-S41	RL-Eng-post2001-VU RL-GB-post2001-VU
<i>Corn Mint</i>	<i>Mentha arvensis</i>	R (DAFOR)	15/08/2014	SP597253		Bicester Airfield		OLWS				RL-Eng-post2001-NT
<i>Corn Mint</i>	<i>Mentha arvensis</i>	R (DAFOR)	31/07/2008	SP605246		Stratton Audley Quarry		OLWS				RL-Eng-post2001-NT
<i>Eyebright</i>	<i>Euphrasia nemorosa</i>	LF (DAFOR)	27/09/2006	SP59902537		Stratton Audley Quarry		OLWS				RL-Eng-post2001-NT
<i>Spiny Restharrow</i>	<i>Ononis spinosa</i>		May-99	SP591243		Buckingham Road Field	field record	CDC				RL-Eng-post2001-NT
<i>Spiny Restharrow</i>	<i>Ononis spinosa</i>		May-99	SP591243		Buckingham Road Field	field record	CDC				RL-Eng-post2001-NT
<i>Spiny Restharrow</i>	<i>Ononis spinosa</i>		May-99	SP591243		Buckingham Road Field	field record	CDC				RL-Eng-post2001-NT
<i>Jacob's-ladder</i>	<i>Polemonium caeruleum</i>		25/05/2009	SP60172513		Stratton Audley Quarry	field record	LN				Status-NR
<i>Hairy Rock-cress</i>	<i>Arabis hirsuta</i>		10/09/2009	SP60172513		Stratton Audley Quarry	field record	LN				RL-Eng-post2001-NT
<i>Shepherd's Cress</i>	<i>Teesdalia nudicaulis</i>		05/07/2013	SP600236		Skimmingdish Lane, Bicester	field record	EC				RL-Eng-post2001-NT RL-GB-post2001-NT
<i>Marsh Ragwort</i>	<i>Senecio aquaticus</i>		23/09/1987	SP603251		Stratton Audley Quarry	field record	OBRC				RL-Eng-post2001-NT
<i>Field Scabious</i>	<i>Knautia arvensis</i>	LA (DAFOR)	19/07/2012	SP59402413		Bicester Airfield		OLWS				RL-Eng-post2001-NT
<i>Field Scabious</i>	<i>Knautia arvensis</i>	LA (DAFOR)	19/07/2012	SP59502405		Bicester Airfield		OLWS				RL-Eng-post2001-NT
<i>Field Scabious</i>	<i>Knautia arvensis</i>	R (DAFOR)	15/08/2014	SP595251		Bicester Airfield		OLWS				RL-Eng-post2001-NT
<i>Field Scabious</i>	<i>Knautia arvensis</i>	LF (DAFOR)	03/08/2012	SP60162405		Bicester Airfield		OLWS				RL-Eng-post2001-NT
<i>Field Scabious</i>	<i>Knautia arvensis</i>		02/06/2004	SP602251		Stratton Audley Quarry	field record	OBRC				RL-Eng-post2001-NT
<i>Field Scabious</i>	<i>Knautia arvensis</i>		20/08/2002	SP602251		Stratton Audley Quarry		OLWS				RL-Eng-post2001-NT
<i>Field Scabious</i>	<i>Knautia arvensis</i>		20/08/2002	SP602251		Stratton Audley Quarry		OLWS				RL-Eng-post2001-NT
<i>Field Scabious</i>	<i>Knautia arvensis</i>		23/09/1987	SP603251		Stratton Audley Quarry	field record	OBRC				RL-Eng-post2001-NT
<i>Field Scabious</i>	<i>Knautia arvensis</i>	R (DAFOR)	31/07/2008	SP605246		Stratton Audley Quarry		OLWS				RL-Eng-post2001-NT
<i>Field Scabious</i>	<i>Knautia arvensis</i>	R (DAFOR)	31/07/2008	SP605246		Stratton Audley Quarry		OLWS				RL-Eng-post2001-NT
Invertebrates - Ants, Bees, Sawflies & Wasps												

Taxon Name	Common Name	Abundance / Sex / Stage	Date	Grid Ref.	Grid Ref. Qualifier	Location	Type of Record	Data Origin	European Directives	UK Legislation	NERC s41	Other Designations
<i>Backthorn Mining Bee</i>	<i>Andrena (Andrena) varians</i>		20/04/2003	SP602251		Stratton Audley Quarry		OLWS				Notable-B
<i>Southern Bronze Furrow Bee</i>	<i>Halictus (Seladonia) confusus</i>		2003	SP602251		Stratton Audley Quarry		OLWS				RL-GB-pre94-R
<i>Orange-footed Furrow Bee</i>	<i>Lasioglossum (Lasioglossum) xanthopus</i>		13/06/2003	SP602251		Stratton Audley Quarry		OLWS				Notable-B
<i>Sharp-collared Furrow Bee</i>	<i>Lasioglossum (Evylaeus) malachurum</i>		07/07/2003	SP602251		Stratton Audley Quarry		OLWS				Notable-B
<i>Lobe-spurred Furrow Bee</i>	<i>Lasioglossum (Evylaeus) pauxillum</i>	1 Adult Male	30/07/2012	SP590253		Caversfield, Bicester		LN				Notable-A
<i>Lobe-spurred Furrow Bee</i>	<i>Lasioglossum (Evylaeus) pauxillum</i>		16/05/2003	SP602251		Stratton Audley Quarry		OLWS				Notable-A
<i>White-footed Furrow Bee</i>	<i>Lasioglossum (Dialictus) leucopus</i>		16/05/2003	SP602251		Stratton Audley Quarry		OLWS				RL-GB-pre94-R
<i>Swollen-thighed Blood Bee</i>	<i>Sphecodes crassus</i>		13/06/2003	SP602251		Stratton Audley Quarry		OLWS				Notable-B
<i>Red-tailed Mason Bee</i>	<i>Osmia (Neosmia) bicolor</i>		13/06/2003	SP602251		Stratton Audley Quarry		OLWS				Notable-B
<i>Small Tiphia</i>	<i>Tiphia minuta</i>		07/07/2003	SP602251		Stratton Audley Quarry		OLWS				Notable-B
Invertebrates - Beetles												
<i>A Beetle</i>	<i>Microplontus campestris</i>		02/06/2004	SP602251		Stratton Audley Quarry	field record	OBRC				Notable-B
<i>A Beetle</i>	<i>Microplontus campestris</i>		02/06/2004	SP602251		Stratton Audley Quarry	field record	OBRC				Notable-B
<i>A Beetle</i>	<i>Thamiocolus viduatus</i>	Adults	18/06/2013	SP5922	1 km record	Gavray Drive, Bicester		WBBRS				Notable-B
<i>A Beetle</i>	<i>Rhinocyllus conicus</i>	Adults	18/06/2013	SP5922	1 km record	Gavray Drive, Bicester		WBBRS				Notable-A
<i>A Beetle</i>	<i>Sepedophilus pedicularius</i>		16/01/2003	SP6022	1 km record	Gavray Drive Meadows	Collection from 'grass-tussocks'	OBRC				Notable
<i>A Beetle</i>	<i>Haploglossa picipennis</i>		14/03/2000	SP602251		Stratton Audley Quarry	field record	OBRC				Notable
<i>A Beetle</i>	<i>Philonthus fumarius</i>		16/01/2003	SP5922	1 km record	Gavray Drive Meadows	Collection from 'grass-tussocks'	OBRC				Notable-B
<i>Bombardier Beetle</i>	<i>Brachinus (Brachinus) crepitans</i>		18/08/1988	SP603251		Stratton Audley Quarry	field record	LN				Notable-B
<i>Bombardier Beetle</i>	<i>Brachinus (Brachinus) crepitans</i>	21 to 100 Adults; Immature Males	27/07/1988	SP603251		Stratton Audley Quarry	field record	LN				Notable-B
<i>A Beetle</i>	<i>Bembidion (Semicampa) gilvipes</i>		16/01/2003	SP5922	1 km record	Gavray Drive Meadows	Collection from 'grass-tussocks'	LN				Notable-B
<i>A Beetle</i>	<i>Bembidion (Diplocampa) clarkii</i>		14/03/2000	SP598251		Stratton Audley Quarry	Collection from 'grass-tussocks'	OBRC				Notable-B
<i>A Beetle</i>	<i>Bembidion (Diplocampa) clarkii</i>		13/03/2000	SP598251		Stratton Audley Quarry	field record	LN				Notable-B
<i>A Beetle</i>	<i>Pterostichus (Pseudomaseus) anthracinus</i>		27/07/1988	SP603251		Stratton Audley Quarry	field record	LN				Notable-B
<i>A Beetle</i>	<i>Ophonus (Ophonus) azureus</i>		27/07/1988	SP603251		Stratton Audley Quarry	field record	LN				Notable-B
<i>A Beetle</i>	<i>Lebia (Lamprias) chlorocephala</i>		26/02/1991	SP599252		Stratton Audley Quarry	field record	OBRC				Notable-B
<i>A Beetle</i>	<i>Cryptocephalus aureolus</i>		02/06/2004	SP599252		Stratton Audley Quarry	field record	OBRC				Notable-B
<i>A Beetle</i>	<i>Cryptocephalus aureolus</i>		02/06/2004	SP599252		Stratton Audley Quarry	field record	OBRC				Notable-B
<i>A Beetle</i>	<i>Cryptocephalus aureolus</i>		02/06/2004	SP602251		Stratton Audley Quarry	field record	OBRC				Notable-B
Invertebrates - Butterflies												

Taxon Name	Common Name	Abundance / Sex / Stage	Date	Grid Ref.	Grid Ref. Qualifier	Location	Type of Record	Data Origin	European Directives	UK Legislation	NERC s41	Other Designations
<i>Grizzled Skipper</i>	<i>Pyrgus malvae</i>	1 Adult	18/05/1997	SP5723	1 km record	Bicester N W	field record	BC			NERC-S41	RL-GB-post2001-VU
<i>Grizzled Skipper</i>	<i>Pyrgus malvae</i>	1	18/05/1997	SP5723	1 km record		field record	BBOWT			NERC-S41	RL-GB-post2001-VU
<i>Grizzled Skipper</i>	<i>Pyrgus malvae</i>		30/07/2009	SP602250		Stratton Audley Quarry		OLWS			NERC-S41	RL-GB-post2001-VU
<i>Wood White</i>	<i>Leptidea sinapis</i>	10 to 29	1995	SP601245			field record	BBOWT		WACA-Sch5-s9.5a	NERC-S41	RL-GB-post2001-EN
<i>Wall</i>	<i>Lasiommata megera</i>		1980	SP597245		Bicester Airfield		LN			NERC-S41	RL-GB-post2001-NT
<i>Wall</i>	<i>Lasiommata megera</i>		10/08/1983	SP599252		Stratton Audley Quarry	field record	OBRC			NERC-S41	RL-GB-post2001-NT
<i>Wall</i>	<i>Lasiommata megera</i>	Adults	02/06/2004	SP602251		Stratton Audley Quarry	field record	OBRC			NERC-S41	RL-GB-post2001-NT
<i>Wall</i>	<i>Lasiommata megera</i>		10/08/1983	SP603251		Stratton Audley Quarry	field record	OBRC			NERC-S41	RL-GB-post2001-NT
<i>Small Heath</i>	<i>Coenonympha pamphilus</i>	2 to 9	18/05/1997	SP5723	1 km record	Bicester N W	field record	BC			NERC-S41	RL-GB-post2001-NT
<i>Small Heath</i>	<i>Coenonympha pamphilus</i>	1 Adult	06/07/1997	SP5823	1 km record	Bicester N	field record	BC			NERC-S41	RL-GB-post2001-NT
<i>Small Heath</i>	<i>Coenonympha pamphilus</i>		1980	SP597245		Bicester Airfield		LN			NERC-S41	RL-GB-post2001-NT
<i>Small Heath</i>	<i>Coenonympha pamphilus</i>		27/09/2006	SP59902537		Stratton Audley Quarry		OLWS			NERC-S41	RL-GB-post2001-NT
<i>Small Heath</i>	<i>Coenonympha pamphilus</i>		08/07/1991	SP599252		Stratton Audley Quarry	field record	OBRC			NERC-S41	RL-GB-post2001-NT
<i>Small Heath</i>	<i>Coenonympha pamphilus</i>	Adults	02/06/2004	SP599252		Stratton Audley Quarry	field record	OBRC			NERC-S41	RL-GB-post2001-NT
<i>Small Heath</i>	<i>Coenonympha pamphilus</i>	Adults	20/08/2002	SP599252		Stratton Audley Quarry		OLWS			NERC-S41	RL-GB-post2001-NT
<i>Small Heath</i>	<i>Coenonympha pamphilus</i>	2	05/08/2003	SP602250		Stratton Audley Quarry		OLWS			NERC-S41	RL-GB-post2001-NT
<i>Small Heath</i>	<i>Coenonympha pamphilus</i>		20/06/2003	SP602250		Stratton Audley Quarry		OLWS			NERC-S41	RL-GB-post2001-NT
<i>Small Heath</i>	<i>Coenonympha pamphilus</i>		11/06/2003	SP602250		Stratton Audley Quarry		OLWS			NERC-S41	RL-GB-post2001-NT
<i>Small Heath</i>	<i>Coenonympha pamphilus</i>		07/07/2003	SP602251		Stratton Audley Quarry	field record	LN			NERC-S41	RL-GB-post2001-NT
<i>Small Heath</i>	<i>Coenonympha pamphilus</i>	3; Adults	16/07/2003	SP602251		Stratton Audley Quarry		OLWS			NERC-S41	RL-GB-post2001-NT
<i>Small Heath</i>	<i>Coenonympha pamphilus</i>	Adults	02/06/2004	SP602251		Stratton Audley Quarry	field record	OBRC			NERC-S41	RL-GB-post2001-NT
<i>Small Heath</i>	<i>Coenonympha pamphilus</i>	Adults	20/08/2002	SP602251		Stratton Audley Quarry		OLWS			NERC-S41	RL-GB-post2001-NT
<i>Small Heath</i>	<i>Coenonympha pamphilus</i>	Adults	02/06/2004	SP602251		Stratton Audley Quarry	field record	OBRC			NERC-S41	RL-GB-post2001-NT
<i>Small Heath</i>	<i>Coenonympha pamphilus</i>	34; Adults	06/08/2003	SP602251		Stratton Audley Quarry		OLWS			NERC-S41	RL-GB-post2001-NT
<i>Small Heath</i>	<i>Coenonympha pamphilus</i>	Adults	13/06/2003	SP602251		Stratton Audley Quarry		OLWS			NERC-S41	RL-GB-post2001-NT
<i>Small Heath</i>	<i>Coenonympha pamphilus</i>	57; Adults	27/08/2003	SP602251		Stratton Audley Quarry		OLWS			NERC-S41	RL-GB-post2001-NT
<i>Small Heath</i>	<i>Coenonympha pamphilus</i>	30; Adults	17/06/2003	SP602251		Stratton Audley Quarry		OLWS			NERC-S41	RL-GB-post2001-NT
<i>Small Heath</i>	<i>Coenonympha pamphilus</i>	12; Adults	15/09/2003	SP602251		Stratton Audley Quarry		OLWS			NERC-S41	RL-GB-post2001-NT
<i>Small Heath</i>	<i>Coenonympha pamphilus</i>	9; Adults	29/05/2003	SP602251		Stratton Audley Quarry		OLWS			NERC-S41	RL-GB-post2001-NT
<i>Small Heath</i>	<i>Coenonympha pamphilus</i>		08/07/1981	SP603251		Stratton Audley Quarry	field record	OBRC			NERC-S41	RL-GB-post2001-NT
<i>Small Heath</i>	<i>Coenonympha pamphilus</i>	1	31/07/2008	SP605246		Stratton Audley Quarry		OLWS			NERC-S41	RL-GB-post2001-NT
<i>Black Hairstreak</i>	<i>Satyrium pruni</i>	3 Adults	03/06/2011	SP61502344		Railway North of Launton	field record	BC		WACA-Sch5-s9.5a		RL-GB-post2001-EN
<i>Black Hairstreak</i>	<i>Satyrium pruni</i>	3 Adults	25/06/2010	SP61522344		Launton railway footpath	field record	BC		WACA-Sch5-s9.5a		RL-GB-post2001-EN
<i>Black Hairstreak</i>	<i>Satyrium pruni</i>	4 Adults	28/06/2010	SP61522344		Launton - area by pond and railway	field record	BC		WACA-Sch5-s9.5a		RL-GB-post2001-EN
<i>Small Blue</i>	<i>Cupido minimus</i>	1 Adult	2002	SP599252		Stratton Audley Quarry	field record	BC		WACA-Sch5-s9.5a	NERC-S41	RL-GB-post2001-NT
<i>Small Blue</i>	<i>Cupido minimus</i>	Adults	20/08/2002	SP599252		Stratton Audley Quarry		OLWS		WACA-Sch5-s9.5a	NERC-S41	RL-GB-post2001-NT

Taxon Name	Common Name	Abundance / Sex / Stage	Date	Grid Ref.	Grid Ref. Qualifier	Location	Type of Record	Data Origin	European Directives	UK Legislation	NERC s41	Other Designations
<i>Small Blue</i>	Cupido minimus	1 Adult	2002	SP602251		Stratton Audley Quarry	field record	BC		WACA-Sch5-s9.5a	NERC-S41	RL-GB-post2001-NT
<i>Small Blue</i>	Cupido minimus	Adults	20/08/2002	SP602251		Stratton Audley Quarry		OLWS		WACA-Sch5-s9.5a	NERC-S41	RL-GB-post2001-NT
<i>Small Blue</i>	Cupido minimus	Adults	20/08/2002	SP602251		Stratton Audley Quarry		OLWS		WACA-Sch5-s9.5a	NERC-S41	RL-GB-post2001-NT
<i>Small Blue</i>	Cupido minimus	Adults	20/08/2002	SP602251		Stratton Audley Quarry		OLWS		WACA-Sch5-s9.5a	NERC-S41	RL-GB-post2001-NT
<i>Adonis Blue</i>	Polyommatus bellargus		1980	SP597245		Bicester Airfield		LN		WACA-Sch5-s9.5a		RL-GB-post2001-NT
Invertebrates - Moths												
<i>Ghost Moth</i>	Hepialus humuli		06/06/2004	SP600240		Bicester Airfield	field record	LN			NERC-S41	
<i>Oak Hook-tip</i>	Watsonalla binaria		06/06/2004	SP600240		Bicester Airfield	field record	LN			NERC-S41	
<i>Blood-vein</i>	Timandra comae		06/06/2004	SP600240		Bicester Airfield	field record	LN			NERC-S41	
<i>Small Phoenix</i>	Ecliptopera silaceata		06/06/2004	SP600240		Bicester Airfield	field record	LN			NERC-S41	
<i>Latticed Heath</i>	Chiasmia clathrata		08/08/1986	SP603251		Stratton Audley Quarry	field record	OBRC			NERC-S41	
<i>Buff Ermine</i>	Spilosoma lutea		06/06/2004	SP600240		Bicester Airfield	field record	LN			NERC-S41	
<i>White Ermine</i>	Spilosoma lubricipeda		06/06/2004	SP600240		Bicester Airfield	field record	LN			NERC-S41	
<i>Cinnabar</i>	Tyria jacobaeae		1980	SP597245		Bicester Airfield		LN			NERC-S41	
<i>Cinnabar</i>	Tyria jacobaeae	4	19/07/2012	SP59822379		Bicester Airfield		OLWS			NERC-S41	
<i>Cinnabar</i>	Tyria jacobaeae	Adults	02/06/2004	SP599252		Stratton Audley Quarry	field record	OBRC			NERC-S41	
<i>Cinnabar</i>	Tyria jacobaeae		06/06/2004	SP600240		Bicester Airfield	field record	LN			NERC-S41	
<i>Cinnabar</i>	Tyria jacobaeae		03/08/2012	SP60162405		Bicester Airfield		OLWS			NERC-S41	
<i>Cinnabar</i>	Tyria jacobaeae		31/07/2008	SP605246		Stratton Audley Quarry		OLWS			NERC-S41	
<i>Knot Grass</i>	Acronicta rumicis		06/06/2004	SP600240		Bicester Airfield	field record	LN			NERC-S41	
<i>Mottled Rustic</i>	Caradrina morpheus		06/06/2004	SP600240		Bicester Airfield	field record	LN			NERC-S41	
<i>Dusky Brocade</i>	Apamea remissa		06/06/2004	SP600240		Bicester Airfield	field record	LN			NERC-S41	
<i>Large Nutmeg</i>	Apamea anceps		06/06/2004	SP600240		Bicester Airfield	field record	LN			NERC-S41	
<i>Broom Moth</i>	Ceramica pisi		06/06/2004	SP600240		Bicester Airfield	field record	LN			NERC-S41	
<i>Shoulder-striped Wainscot</i>	Leucania comma		06/06/2004	SP600240		Bicester Airfield	field record	LN			NERC-S41	
<i>Small Square-spot</i>	Diarsia rubi		06/06/2004	SP600240		Bicester Airfield	field record	LN			NERC-S41	
Invertebrates - True Bugs												
<i>A True Bug</i>	Macropsis glandacea		08/08/1986	SP603251		Stratton Audley Quarry	field record	OBRC				Notable-B RL-GB-pre94-Insu
Mammals - Terrestrial (bats)												
<i>Bats</i>	Chiroptera	1 Dropping; Droppings	06/01/2017	SP59282441		Building 103, Bicester Heritage, Buckingham Road, Bicester	dung/droppings/frass/pellet, etc.	EC	HabDir-A2np HabDir-A4	HabReg-Sch2 WACA-Sch5-s9.4b/s9.4c/s9.5a/s9.5b	NERC-S41	RL-Global-post2001-NT
<i>Bats</i>	Chiroptera	1 Sign; Signs	06/01/2017	SP59282448		Building 103, Bicester Heritage, Buckingham Road, Bicester	Dung or other signs	EC	HabDir-A2np HabDir-A4	HabReg-Sch2 WACA-Sch5-s9.4b/s9.4c/s9.5a/s9.5b	NERC-S41	RL-Global-post2001-NT
<i>Unidentified Bat</i>	Myotis	Flying	31/08/2016-27/09/2016	SP60652592		Squash Court, Stratton Audley Hall	aural bat detector	EC	HabDir-A2np HabDir-A4	HabReg-Sch2 WACA-Sch5-s9.4b/s9.4c/s9.5a/s9.5b	NERC-S41	RL-Global-post2001-NT
<i>Natterer's Bat</i>	Myotis nattereri		09/10/1993	SP595259		Bicester	field record	NE	HabDir-A4	HabReg-Sch2 WACA-Sch5-s9.4b/s9.4c/s9.5a/s9.5b		
<i>Noctule Bat</i>	Nyctalus noctula		07/05/2017	SP590241		Land adjacent to Skimmingdish Lane, Bicester	aural bat detector	EC	HabDir-A4	HabReg-Sch2 WACA-Sch5-s9.4b/s9.4c/s9.5a/s9.5b	NERC-S41	
<i>Noctule Bat</i>	Nyctalus noctula		03/05/2017	SP590241		Land adjacent to Skimmingdish Lane, Bicester	aural bat detector	EC	HabDir-A4	HabReg-Sch2 WACA-Sch5-s9.4b/s9.4c/s9.5a/s9.5b	NERC-S41	
<i>Noctule Bat</i>	Nyctalus noctula		21/09/2016	SP59152412		Land adjacent to Skimmingdish Lane, Bicester	aural bat detector	EC	HabDir-A4	HabReg-Sch2 WACA-Sch5-s9.4b/s9.4c/s9.5a/s9.5b	NERC-S41	
<i>Noctule Bat</i>	Nyctalus noctula	Flying	31/08/2016-27/09/2016	SP60652592		Squash Court, Stratton Audley Hall	aural bat detector	EC	HabDir-A4	HabReg-Sch2 WACA-Sch5-s9.4b/s9.4c/s9.5a/s9.5b	NERC-S41	
<i>Common Pipistrelle</i>	Pipistrellus pipistrellus		29/12/1999	SP609258			field record	OBRC	HabDir-A4	HabReg-Sch2 WACA-Sch5-s9.4b/s9.4c/s9.5a/s9.5b		
<i>Nathusius's Pipistrelle</i>	Pipistrellus nathusii	Flying	31/08/2016-27/09/2016	SP60652592		Squash Court, Stratton Audley Hall	aural bat detector	EC	HabDir-A4	HabReg-Sch2 WACA-Sch5-s9.4b/s9.4c/s9.5a/s9.5b		

Taxon Name	Common Name	Abundance / Sex / Stage	Date	Grid Ref.	Grid Ref. Qualifier	Location	Type of Record	Data Origin	European Directives	UK Legislation	NERC s41	Other Designations
<i>Common Pipistrelle</i>	<i>Pipistrellus pipistrellus</i>	Droppings	24/07/2015	SP58102530		St Lawrences Church, Caversfield	dung/droppings/frass/pellet, etc.	NE	HabDir-A4	HabReg-Sch2 WACA-Sch5-s9.4b/s9.4c/s9.5a/s9.5b		
<i>Common Pipistrelle</i>	<i>Pipistrellus pipistrellus</i>		03/05/2017	SP58932426		Land adjacent to Skimmingdish Lane, Bicester	aural bat detector	EC	HabDir-A4	HabReg-Sch2 WACA-Sch5-s9.4b/s9.4c/s9.5a/s9.5b		
<i>Common Pipistrelle</i>	<i>Pipistrellus pipistrellus</i>		07/05/2017	SP590241		Land adjacent to Skimmingdish Lane, Bicester	aural bat detector	EC	HabDir-A4	HabReg-Sch2 WACA-Sch5-s9.4b/s9.4c/s9.5a/s9.5b		
<i>Common Pipistrelle</i>	<i>Pipistrellus pipistrellus</i>		21/09/2016	SP590241		Land adjacent to Skimmingdish Lane, Bicester	aural bat detector	EC	HabDir-A4	HabReg-Sch2 WACA-Sch5-s9.4b/s9.4c/s9.5a/s9.5b		
<i>Common Pipistrelle</i>	<i>Pipistrellus pipistrellus</i>		22/09/2016	SP590241		Land adjacent to Skimmingdish Lane, Bicester	aural bat detector	EC	HabDir-A4	HabReg-Sch2 WACA-Sch5-s9.4b/s9.4c/s9.5a/s9.5b		
<i>Common Pipistrelle</i>	<i>Pipistrellus pipistrellus</i>		24/09/2016	SP590241		Land adjacent to Skimmingdish Lane, Bicester	aural bat detector	EC	HabDir-A4	HabReg-Sch2 WACA-Sch5-s9.4b/s9.4c/s9.5a/s9.5b		
<i>Common Pipistrelle</i>	<i>Pipistrellus pipistrellus</i>		04/05/2017	SP590241		Land adjacent to Skimmingdish Lane, Bicester	aural bat detector	EC	HabDir-A4	HabReg-Sch2 WACA-Sch5-s9.4b/s9.4c/s9.5a/s9.5b		
<i>Common Pipistrelle</i>	<i>Pipistrellus pipistrellus</i>		03/05/2017	SP590241		Land adjacent to Skimmingdish Lane, Bicester	aural bat detector	EC	HabDir-A4	HabReg-Sch2 WACA-Sch5-s9.4b/s9.4c/s9.5a/s9.5b		
<i>Common Pipistrelle</i>	<i>Pipistrellus pipistrellus</i>		23/09/2016	SP590241		Land adjacent to Skimmingdish Lane, Bicester	aural bat detector	EC	HabDir-A4	HabReg-Sch2 WACA-Sch5-s9.4b/s9.4c/s9.5a/s9.5b		
<i>Common Pipistrelle</i>	<i>Pipistrellus pipistrellus</i>		05/05/2017	SP590241		Land adjacent to Skimmingdish Lane, Bicester	aural bat detector	EC	HabDir-A4	HabReg-Sch2 WACA-Sch5-s9.4b/s9.4c/s9.5a/s9.5b		
<i>Common Pipistrelle</i>	<i>Pipistrellus pipistrellus</i>		21/09/2016	SP59152412		Land adjacent to Skimmingdish Lane, Bicester	aural bat detector	EC	HabDir-A4	HabReg-Sch2 WACA-Sch5-s9.4b/s9.4c/s9.5a/s9.5b		
<i>Common Pipistrelle</i>	<i>Pipistrellus pipistrellus</i>	Flying	31/08/2016-27/09/2016	SP60652592		Squash Court, Stratton Audley Hall	aural bat detector	EC	HabDir-A4	HabReg-Sch2 WACA-Sch5-s9.4b/s9.4c/s9.5a/s9.5b		
<i>Common Pipistrelle</i>	<i>Pipistrellus pipistrellus</i>	1 Individual	27/09/2016	SP60652592		Squash Court, Stratton Audley Hall	aural bat detector	EC	HabDir-A4	HabReg-Sch2 WACA-Sch5-s9.4b/s9.4c/s9.5a/s9.5b		
<i>Soprano Pipistrelle</i>	<i>Pipistrellus pygmaeus</i>		23/09/2016	SP590241		Land adjacent to Skimmingdish Lane, Bicester	aural bat detector	EC	HabDir-A4	HabReg-Sch2 WACA-Sch5-s9.4b/s9.4c/s9.5a/s9.5b	NERC-S41	
<i>Soprano Pipistrelle</i>	<i>Pipistrellus pygmaeus</i>		05/05/2017	SP590241		Land adjacent to Skimmingdish Lane, Bicester	aural bat detector	EC	HabDir-A4	HabReg-Sch2 WACA-Sch5-s9.4b/s9.4c/s9.5a/s9.5b	NERC-S41	
<i>Soprano Pipistrelle</i>	<i>Pipistrellus pygmaeus</i>		04/05/2017	SP590241		Land adjacent to Skimmingdish Lane, Bicester	aural bat detector	EC	HabDir-A4	HabReg-Sch2 WACA-Sch5-s9.4b/s9.4c/s9.5a/s9.5b	NERC-S41	
<i>Soprano Pipistrelle</i>	<i>Pipistrellus pygmaeus</i>		21/09/2016	SP590241		Land adjacent to Skimmingdish Lane, Bicester	aural bat detector	EC	HabDir-A4	HabReg-Sch2 WACA-Sch5-s9.4b/s9.4c/s9.5a/s9.5b	NERC-S41	
<i>Soprano Pipistrelle</i>	<i>Pipistrellus pygmaeus</i>		22/09/2016	SP590241		Land adjacent to Skimmingdish Lane, Bicester	aural bat detector	EC	HabDir-A4	HabReg-Sch2 WACA-Sch5-s9.4b/s9.4c/s9.5a/s9.5b	NERC-S41	
<i>Soprano Pipistrelle</i>	<i>Pipistrellus pygmaeus</i>		03/05/2017	SP590241		Land adjacent to Skimmingdish Lane, Bicester	aural bat detector	EC	HabDir-A4	HabReg-Sch2 WACA-Sch5-s9.4b/s9.4c/s9.5a/s9.5b	NERC-S41	
<i>Soprano Pipistrelle</i>	<i>Pipistrellus pygmaeus</i>		24/09/2016	SP590241		Land adjacent to Skimmingdish Lane, Bicester	aural bat detector	EC	HabDir-A4	HabReg-Sch2 WACA-Sch5-s9.4b/s9.4c/s9.5a/s9.5b	NERC-S41	
<i>Soprano Pipistrelle</i>	<i>Pipistrellus pygmaeus</i>		07/05/2017	SP590241		Land adjacent to Skimmingdish Lane, Bicester	aural bat detector	EC	HabDir-A4	HabReg-Sch2 WACA-Sch5-s9.4b/s9.4c/s9.5a/s9.5b	NERC-S41	
<i>Soprano Pipistrelle</i>	<i>Pipistrellus pygmaeus</i>		11/10/2016	SP59102409		Land adjacent to Skimmingdish Lane, Bicester	aural bat detector	EC	HabDir-A4	HabReg-Sch2 WACA-Sch5-s9.4b/s9.4c/s9.5a/s9.5b	NERC-S41	
<i>Soprano Pipistrelle</i>	<i>Pipistrellus pygmaeus</i>	Flying	31/08/2016-27/09/2016	SP60652592		Squash Court, Stratton Audley Hall	aural bat detector	EC	HabDir-A4	HabReg-Sch2 WACA-Sch5-s9.4b/s9.4c/s9.5a/s9.5b	NERC-S41	
<i>Brown Long-eared Bat</i>	<i>Plecotus auritus</i>	Droppings	24/07/2015	SP58102530		St Lawrences Church, Caversfield	dung/droppings/frass/pellet, etc.	NE	HabDir-A4	HabReg-Sch2 WACA-Sch5-s9.4b/s9.4c/s9.5a/s9.5b	NERC-S41	
<i>Brown Long-eared Bat</i>	<i>Plecotus auritus</i>	Flying	31/08/2016-27/09/2016	SP60652592		Squash Court, Stratton Audley Hall	aural bat detector	EC	HabDir-A4	HabReg-Sch2 WACA-Sch5-s9.4b/s9.4c/s9.5a/s9.5b	NERC-S41	
<i>Brown Long-eared Bat</i>	<i>Plecotus auritus</i>	10 Droppings	19/08/2016	SP60652592		Squash Court, Stratton Audley Hall	dung/droppings/frass/pellet, etc.	EC	HabDir-A4	HabReg-Sch2 WACA-Sch5-s9.4b/s9.4c/s9.5a/s9.5b	NERC-S41	
Mammals - Terrestrial (excl. bats)												
<i>West European Hedgehog</i>	<i>Erinaceus europaeus</i>	1 alive	2012	SP579240		Confidential	hibernating	PTES			NERC-S41	

Taxon Name	Common Name	Abundance / Sex / Stage	Date	Grid Ref.	Grid Ref. Qualifier	Location	Type of Record	Data Origin	European Directives	UK Legislation	NERC s41	Other Designations
<i>West European Hedgehog</i>	<i>Erinaceus europaeus</i>	3 alive	2014	SP581230		Confidential	hibernating	PTES			NERC-S41	
<i>West European Hedgehog</i>	<i>Erinaceus europaeus</i>	1	30/10/2006	SP582229		Bicester	field record	PTES			NERC-S41	
<i>West European Hedgehog</i>	<i>Erinaceus europaeus</i>	2	19/08/2006	SP585239		Bicester	field record	PTES			NERC-S41	
<i>West European Hedgehog</i>	<i>Erinaceus europaeus</i>	1	16/08/2006	SP586243		Bicester	field record	PTES			NERC-S41	
<i>West European Hedgehog</i>	<i>Erinaceus europaeus</i>	3	31/08/2007	SP587238		Bicester	field record	PTES			NERC-S41	
<i>West European Hedgehog</i>	<i>Erinaceus europaeus</i>	1	31/08/2007	SP587238		Bicester	field record	PTES			NERC-S41	
<i>West European Hedgehog</i>	<i>Erinaceus europaeus</i>	2	18/10/2006	SP587241		Bicester	field record	PTES			NERC-S41	
<i>West European Hedgehog</i>	<i>Erinaceus europaeus</i>	1	07/11/2006	SP591232		Churchill Road, Bicester	field record	PTES			NERC-S41	
<i>West European Hedgehog</i>	<i>Erinaceus europaeus</i>	1	27/09/2006	SP591250		Caversfield, Bicester	field record	PTES			NERC-S41	
<i>West European Hedgehog</i>	<i>Erinaceus europaeus</i>	2	07/11/2006	SP596235		Bicester	field record	PTES			NERC-S41	
<i>Eurasian Badger</i>	<i>Meles meles</i>	1	25/06/2006	SP581248		B4100, just south of Home Farm	dead on road	LN		Badgers-1992		
<i>Eurasian Badger</i>	<i>Meles meles</i>	1	13/08/2005	SP594241		Skimmingdish Lane, Bicester		LN		Badgers-1992		
<i>Eurasian Badger</i>	<i>Meles meles</i>		23/04/2011	SP596256			dead on road	LN		Badgers-1992		
<i>Eurasian Badger</i>	<i>Meles meles</i>	1 Sett	12/04/2016	SP600238		Skimmingdish Lane, Caversfield	Sett	EC		Badgers-1992		
<i>Eurasian Badger</i>	<i>Meles meles</i>		05/07/2013	SP60112378		Skimmingdish Lane, Bicester	Sett	EC		Badgers-1992		
<i>Eurasian Badger</i>	<i>Meles meles</i>		05/07/2013	SP60182373		Skimmingdish Lane, Bicester	Sett	EC		Badgers-1992		
<i>Eurasian Badger</i>	<i>Meles meles</i>	Signs	31/07/2008	SP602250		Stratton Audley Quarry		OLWS		Badgers-1992		
<i>Eurasian Badger</i>	<i>Meles meles</i>	Droppings	09/04/2015	SP611230		Land at Grange Farm, Launton	Dung or other signs	EC		Badgers-1992		
<i>Eurasian Badger</i>	<i>Meles meles</i>	Signs	09/04/2015	SP611230		Land at Grange Farm, Launton	Dung or other signs	EC		Badgers-1992		
<i>Eurasian Badger</i>	<i>Meles meles</i>	Tracks	09/04/2015	SP611230		Land at Grange Farm, Launton	tracks/trail	EC		Badgers-1992		
<i>Eurasian Badger</i>	<i>Meles meles</i>	Signs	01/06/2015	SP615239		Bicester	Sett	EC		Badgers-1992		
<i>Eurasian Badger</i>	<i>Meles meles</i>	Signs	01/06/2015	SP617239		Bicester	Sett	EC		Badgers-1992		
<i>European Water Vole</i>	<i>Arvicola amphibius</i>		01/06/2003	SP580230		Bicester		BBOWT		WACA-Sch5-s9.4a/s9.4b/s9.4c	NERC-S41	
<i>European Water Vole</i>	<i>Arvicola amphibius</i>		08/04/1999	SP580236		Ray Catchment		BBOWT		WACA-Sch5-s9.4a/s9.4b/s9.4c	NERC-S41	
<i>Brown Hare</i>	<i>Lepus europaeus</i>		1980	SP597245		Bicester Airfield		LN			NERC-S41	
<i>Brown Hare</i>	<i>Lepus europaeus</i>		11/06/2003	SP602250		Stratton Audley Quarry		OLWS			NERC-S41	
<i>Brown Hare</i>	<i>Lepus europaeus</i>	2 Adults	02/06/2004	SP602251		Stratton Audley Quarry	field record	OBRC			NERC-S41	
Reptiles												
<i>Common Lizard</i>	<i>Zootoca vivipara</i>	1 Female; 3 Adults; 3 Juveniles	29/09/2017	SP590241		Land adjacent to Skimmingdish Lane, Bicester	field record	EC		WACA-Sch5-s9.1k/s9.5a	NERC-S41	
<i>Common Lizard</i>	<i>Zootoca vivipara</i>	1 Juvenile	07/10/2016	SP590241		Land adjacent to Skimmingdish Lane, Bicester	field record	EC		WACA-Sch5-s9.1k/s9.5a	NERC-S41	
<i>Common Lizard</i>	<i>Zootoca vivipara</i>	3 Males; 3 Females; 6 Juveniles	05/10/2016	SP590241		Land adjacent to Skimmingdish Lane, Bicester	field record	EC		WACA-Sch5-s9.1k/s9.5a	NERC-S41	
<i>Common Lizard</i>	<i>Zootoca vivipara</i>	1 Juvenile; 2 Females; 3 Males	02/10/2016	SP590241		Land adjacent to Skimmingdish Lane, Bicester	field record	EC		WACA-Sch5-s9.1k/s9.5a	NERC-S41	
<i>Common Lizard</i>	<i>Zootoca vivipara</i>	1 Juvenile; 1 Male; 1 Female; 2 Adults	09/10/2016	SP590241		Land adjacent to Skimmingdish Lane, Bicester	field record	EC		WACA-Sch5-s9.1k/s9.5a	NERC-S41	
<i>Common Lizard</i>	<i>Zootoca vivipara</i>	1 Female; 5 Juveniles	11/10/2016	SP590241		Land adjacent to Skimmingdish Lane, Bicester	field record	EC		WACA-Sch5-s9.1k/s9.5a	NERC-S41	
<i>Common Lizard</i>	<i>Zootoca vivipara</i>	2 Juveniles	15/10/2016	SP590241		Land adjacent to Skimmingdish Lane, Bicester	field record	EC		WACA-Sch5-s9.1k/s9.5a	NERC-S41	

Taxon Name	Common Name	Abundance / Sex / Stage	Date	Grid Ref.	Grid Ref. Qualifier	Location	Type of Record	Data Origin	European Directives	UK Legislation	NERC s41	Other Designations
<i>Common Lizard</i>	<i>Zootoca vivipara</i>	1 Female; 2 Juveniles; 3 Adults	18/10/2016	SP590241		Land adjacent to Skimmingdish Lane, Bicester	field record	EC		WACA-Sch5-s9.1k/s9.5a	NERC-S41	
<i>Common Lizard</i>	<i>Zootoca vivipara</i>	1 Individual	25/05/2016	SP600238		Skimmingdish Lane, Caversfield	field record	EC		WACA-Sch5-s9.1k/s9.5a	NERC-S41	
<i>Common Lizard</i>	<i>Zootoca vivipara</i>	1 Adult	04/06/2015	SP611230		Land at Grange Farm, Launton	field record	EC		WACA-Sch5-s9.1k/s9.5a	NERC-S41	
<i>Common Lizard</i>	<i>Zootoca vivipara</i>	1 Adult	11/06/2015	SP611230		Land at Grange Farm, Launton	field record	EC		WACA-Sch5-s9.1k/s9.5a	NERC-S41	
<i>Common Lizard</i>	<i>Zootoca vivipara</i>	1 Adult	03/06/2015	SP611230		Land at Grange Farm, Launton	Reptile Refugia	EC		WACA-Sch5-s9.1k/s9.5a	NERC-S41	
<i>Common Lizard</i>	<i>Zootoca vivipara</i>	1 Adult Female	07/05/2015	SP611230		Land at Grange Farm, Launton	Reptile Refugia	EC		WACA-Sch5-s9.1k/s9.5a	NERC-S41	
<i>Common Lizard</i>	<i>Zootoca vivipara</i>	1 Adult	07/05/2015	SP611230		Land at Grange Farm, Launton	Reptile Refugia	EC		WACA-Sch5-s9.1k/s9.5a	NERC-S41	
<i>Common Lizard</i>	<i>Zootoca vivipara</i>	3 Adult Males	04/06/2015	SP611230		Land at Grange Farm, Launton	Reptile Refugia	EC		WACA-Sch5-s9.1k/s9.5a	NERC-S41	
<i>Common Lizard</i>	<i>Zootoca vivipara</i>	1 Adult Male	11/06/2015	SP611230		Land at Grange Farm, Launton	Reptile Refugia	EC		WACA-Sch5-s9.1k/s9.5a	NERC-S41	
<i>Common Lizard</i>	<i>Zootoca vivipara</i>	1 Adult Female	03/06/2015	SP611230		Land at Grange Farm, Launton	field record	EC		WACA-Sch5-s9.1k/s9.5a	NERC-S41	
<i>Grass Snake</i>	<i>Natrix helvetica</i>	2 Individuals	25/05/2016	SP600239		Skimmingdish Lane, Caversfield	field record	EC		WACA-Sch5-s9.1k/s9.5a	NERC-S41	
<i>Grass Snake</i>	<i>Natrix helvetica</i>		08/07/1991	SP602251		Stratton Audley Quarry	field record	OBRC		WACA-Sch5-s9.1k/s9.5a	NERC-S41	
<i>Grass Snake</i>	<i>Natrix helvetica</i>	Adults	08/07/1981	SP603251		Stratton Audley Quarry	field record	OBRC		WACA-Sch5-s9.1k/s9.5a	NERC-S41	
<i>Grass Snake</i>	<i>Natrix helvetica</i>	1 Individual	19/04/2016	SP6066423598		Skimmingdish Lane, Caversfield	field record	EC		WACA-Sch5-s9.1k/s9.5a	NERC-S41	
<i>Grass Snake</i>	<i>Natrix helvetica</i>	1 Adult	16/07/2014	SP6090225775		Stratton Audley, OX27 9AS	field record	ARGUK		WACA-Sch5-s9.1k/s9.5a	NERC-S41	
<i>Grass Snake</i>	<i>Natrix helvetica</i>	1 Adult	11/06/2015	SP611230		Land at Grange Farm, Launton	Reptile Refugia	EC		WACA-Sch5-s9.1k/s9.5a	NERC-S41	

Taxon Name	Common Name	Abundance / Sex / Stage	Date	Grid Ref.	Grid Ref. Qualifier	Location	Type of Record	Data Origin	Invasive Status
Higher Plants - Flowering Plants									
<i>Nuttall's Waterweed</i>	<i>Elodea nuttallii</i>		20/08/2002	SP602251		Stratton Audley Quarry		OLWS	INNS-Priority-2015
<i>Nuttall's Waterweed</i>	<i>Elodea nuttallii</i>		20/08/2002	SP602251		Stratton Audley Quarry		OLWS	INNS-Priority-2015
<i>Nuttall's Waterweed</i>	<i>Elodea nuttallii</i>		31/07/2008	SP605246		Stratton Audley Quarry		OLWS	INNS-Priority-2015
<i>Butterfly-bush</i>	<i>Buddleja davidii</i>	R (DAFOR)	24/08/2015	SP590242		Skimmingdish Lane Balancing Pond		TVERC	INNS-Other-2015
<i>Butterfly-bush</i>	<i>Buddleja davidii</i>		01/04/2017	SP59072423		Land adjacent to Skimmingdish Lane, Bicester	field record	EC	INNS-Other-2015
<i>Butterfly-bush</i>	<i>Buddleja davidii</i>	R (DAFOR)	13/07/2012	SP596230		Jarvis Lane		OLWS	INNS-Other-2015
<i>Butterfly-bush</i>	<i>Buddleja davidii</i>	R (DAFOR)	19/07/2012	SP59702397		Bicester Airfield		OLWS	INNS-Other-2015
<i>Butterfly-bush</i>	<i>Buddleja davidii</i>	R (DAFOR)	15/08/2014	SP597253		Bicester Airfield		OLWS	INNS-Other-2015
<i>Butterfly-bush</i>	<i>Buddleja davidii</i>		02/06/2004	SP602251		Stratton Audley Quarry	field record	OBRC	INNS-Other-2015
<i>Italian Alder</i>	<i>Alnus cordata</i>		01/04/2017	SP59152412		Land adjacent to Skimmingdish Lane, Bicester	field record	EC	INNS-Other-2015
<i>Winter Heliotrope</i>	<i>Petasites fragrans</i>		07/04/2009	SP602250		Stratton Audley Quarry		OLWS	INNS-Other-2015
Invertebrates - Crustaceans									
<i>A Crustacean</i>	<i>Crangonyx pseudogracilis</i>		20/03/2006	SP613256		Stratton Audley, Audley Brook		EA	INNS-Other-2015

Status Key. Produced January 2014 by Thames Valley Environmental Records Centre

EUROPEAN DIRECTIVES

- BirdsDir-A1 - Species listed on Annex 1 of EC Directive 79/409/EEC on the Conservation of Wild Birds.
- HabDir-A2, HabDir-A4 & HabDir-A5 - Annex 2 and Annexes 4/5 respectively of the EC Habitats Directive. This is the Council Directive 92/43/EEC on the Conservation of natural habitats and of wild fauna and flora.

UK LEGISLATION: CONSERVATION OF HABITATS AND SPECIES REGULATIONS 2010

This legislation translates the European Habitats Directive (see above) into UK law where species are listed in Schedule 2 and Schedule 4. Species are tagged as HabReg-Sch2 or HabReg-Sch4.

UK LEGISLATION: WILDLIFE AND COUNTRYSIDE ACT 1981

Schedule 1 Wild Birds

prohibits the intentional killing, injuring or taking of any wild bird and the taking, damaging or destroying of the nest (whilst being built or in use) or eggs. It prohibits possession of wild birds (dead or alive) or their eggs. In addition:

- WACA-Sch1(pt 1) – There are additional penalties for offences relating to birds on this schedule and it is also an offence to disturb such birds at the nest or with dependent young.
- WACA-Sch1(pt 2) – Covers the protection of birds which may be killed during the open season.

(Please note that some schedule 1 bird records will refer to species that do not breed in the county, e.g. over-wintering birds such as Redwing or Fieldfare. Although we include them in the annotated records, only they and their nests, eggs and dependent young enjoy extra protection under the W&C 1981 act. If you are in any doubt about the breeding status of a bird please contact us at TVERC)

Schedule 5 Wild Animals

- WACA-Sch5_sect9.1 – covers intentional killing injuring or taking (species are covered by all or some of these)
- WACA-Sch5_sect9.2 – Covers possession or control (live or dead animal, part or derivative)
- WACA-Sch5_sect9.4a – Covers damage to or destruction of any structure or place used by a scheduled animal for shelter or protection.
- WACA-Sch5_sect9.4b – Covers disturbance of animal occupying such a structure or place.
- WACA-Sch5_sect9.4c – Covers obstruction of access to any structure or place which any such animal uses for shelter or protection
- WACA-Sch5_sect9.5a – Covers selling, offering for sale, possessing or transporting for the purpose of sale (live or dead animal, part or derivative).
- WACA-Sch5_sect9.5b – Covers advertising for buying or selling such things.

Schedule 8 Wild Plants

- WACA-Sch8 - Covers any picking, uprooting or destruction of plants listed on the Schedule. It also prohibits the sale, etc, or possession for the purpose of sale of any plants on the Schedule.

PRIORITY NERC S.41 2006

Species listed in Section 41 of the Natural Environment and Rural Communities Act 2006 as a species of principle importance. These are very similar to the list of UKBAP and have superseded them. Species are tagged NERC S.41.

OTHER DESIGNATIONS: RED LISTS

Global Red List Species (tagged GlobalRed) - Species listed by the International Union for Conservation of Nature (IUCN) in the IUCN Red List of Threatened Species. Species included are from post 1994 and post 2001 lists.

GB Red List Species (tagged GBRed) - Species included in national red lists. Species included are from pre 1994 and post 2001 lists. Please note not all taxon groups are currently covered, for example fungi.

Abbreviations:

EX – Extinct A taxon is Extinct when there is no reasonable doubt that the last individual has died.

EW – Extinct in the Wild. Species known to survive only in cultivation, in captivity or as a naturalised population(s) well outside the past range.

CR – Critically Endangered (CR) Species facing an extremely high risk of extinction in the wild in the immediate future.

EN – Endangered: Species that are not Critically Endangered but is facing a very high risk of extinction in the wild in the near future.

VU – Vulnerable: A species is Vulnerable when it is not Critically Endangered or Endangered but is facing a high risk of extinction in the wild in the medium-term future

NT – Near Threatened – A taxon considered to likely to become endangered in the near future.

LR(cd) – Lower risk (conservation dependent)

DD – Data deficient – A taxon with insufficient data to make an assessment of its risk of extinction.

RE – Regionally Extinct – Taxa that are considered extinct within the region but populations exist elsewhere in the world.

Inde – indeterminate – based on a pre 1994 category: Taxa which are known to be Endangered, Vulnerable or Rare but with insufficient data to place them in one of the categories.

Insu – Insufficiently known - based on a pre 1994 category which equates to data deficient.

Species included here are from information compiled by JNCC (The Joint Nature Conservation Committee).

OTHER DESIGNATIONS: NATIONALLY NOTABLE SPECIES

This covers invertebrate species not falling within IUCN categories but never the less uncommon in Britain.

Nationally Notable A (Tagged Notable-A): Taxa which occur in <30 10 km (hectad) squares or for less well recorded groups within <7 vice counties.

Nationally Notable B (Tagged Notable-B): Taxa which don't fall within IUCN categories but are uncommon in Britain and occur in 31-100 10 km sq/ or for less or for less well recorded groups between 8 and 20 vice counties

Notable (Tagged Notable): Taxa known to be scarce (occurring in between 16 and 100 10km squares) but for which there is insufficient information to assign them to the above categories.

This designation comes from the National Biodiversity Network (NBN) species dictionary but is supported by JNCC.

OTHER DESIGNATIONS: NATIONALLY RARE OR SCARCE SPECIES

This designation covers species that are recognised to occur in only a few locations in Britain.

Rare (tagged as Status-NR) = occurring in 15 or fewer hectads (10 km squares) in the UK

Scarce (tagged as Status-NS) = occurring in 16 – 100 hectads in the UK.

OTHER DESIGNATIONS: BIRDS OF CONSERVATION CONCERN LISTS & RED LIST FUNGI

These lists were drawn up by leading governmental and non-governmental conservation organizations including the RSPB and British Trust for Ornithology. The most recent version was published in May 2009.

Red List (tagged Bird-Red) - species are those that are globally threatened, whose population or range has declined rapidly in recent years (i.e. by more than 50% in 25 years), or which have declined historically and not recovered.

Amber List (tagged Bird-Amber) - Amber list species are those whose population or range has declined moderately in recent years (by more than 25% but less than 50% in 25 years), those whose population has declined historically but recovered recently, rare breeders (fewer than 300 pairs), those with internationally important populations in the UK, those with localised populations, and those with an unfavourable conservation status in Europe.

Red List Fungi – This designation uses the Red Data List of Threatened British Fungi (preliminary assessment) by Shelley Evans (BMS Conservation Officer). Species are designated as:

Fungi Red-CR – Critically Endangered

Fungi Red-EN – Endangered

Fungi Red-NT – Near Threatened

Fungi Red-VU – Vulnerable

These follow current IUCN guidelines (2001) as closely as possible but with adaptations to take into account the fungal lifestyle and associated practicalities of fungal recording.

OTHER DESIGNATIONS: LOCAL BAP SPECIES

For any Local Authority that has drawn up a list of BAP species. Designations will only apply to species recorded from the Local Authority area.

Currently, only Bracknell Forest Council have such a BAP list and relevant records are tagged Bracknell LBAP.

INVASIVE NON-NATIVE SPECIES

Species appearing on the Environment Agency list of non-native invasive species 2014. Species may have the following designations:

Priority Species: Species affecting EA interests the most

Rapid Response Species: Very invasive species that are not yet established

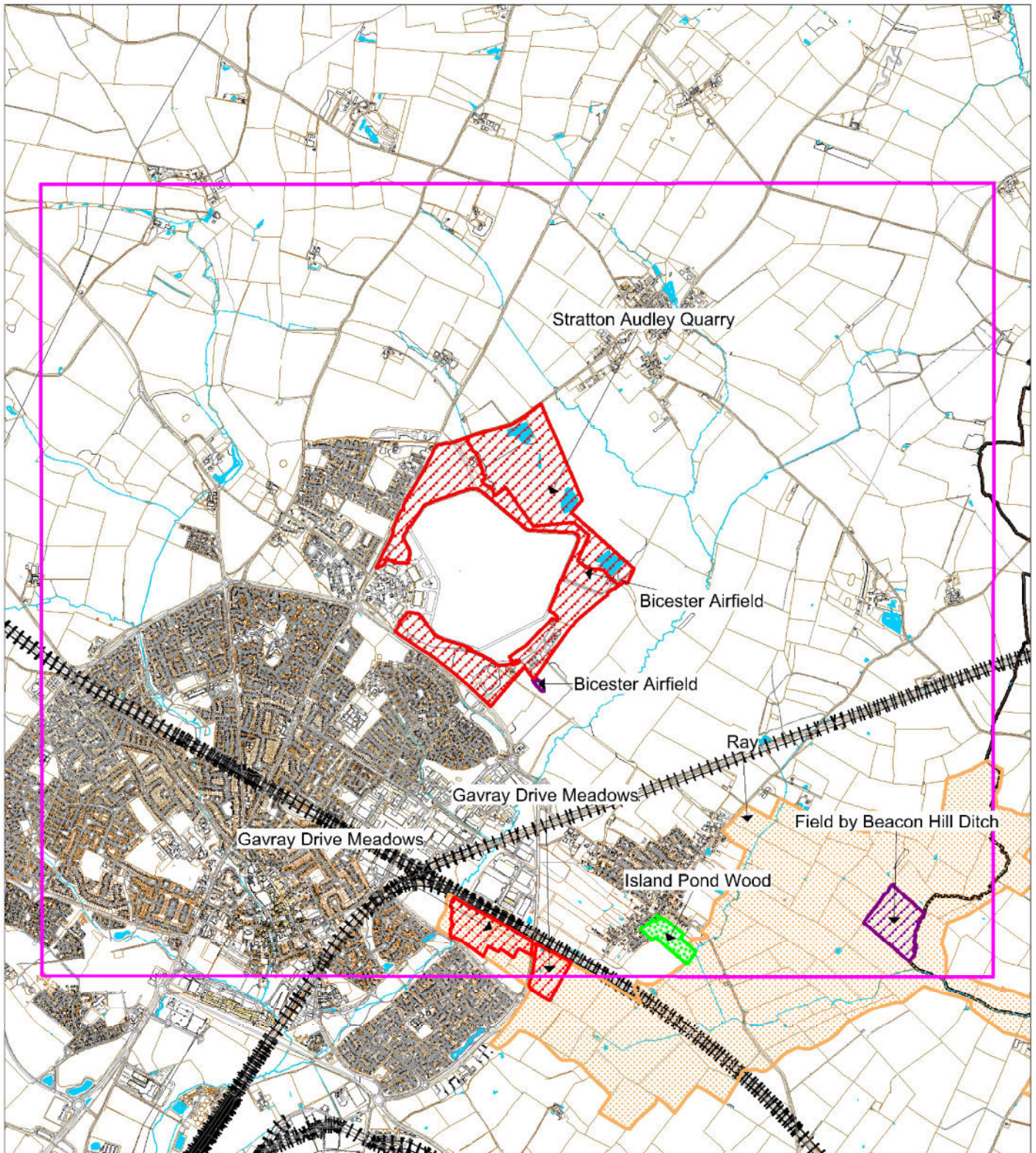
DATA ORIGIN KEY – March 2018

Data Origin Abbreviation	Origin Details
ABFG	Association of British Fungus Groups
AC	Academic Researcher
AN	Abingdon Natural History Society
ARC	Amphibian & Reptile Conservation
ANHSO	Ashmolean Natural History Society (& Rare Plant Group)
ARGUK	UK Amphibian & Reptile Groups
BAT	Bat Licence Returns (from licenced Bat Recorders)
BBG	Binfield Badger Group
BBOWT	Berkshire, Buckinghamshire and Oxfordshire Wildlife Trust
BC	Butterfly Conservation (includes Upper Thames and National Data)
BDS	British Dragonfly Society
BENHS	British Entomological Natural History Society
BFC	Bracknell Forest Council
BFVT	Bracknell Forest Veteran Tree Survey
BGG	Bicester Green Gym
BIG	Berkshire Invertebrate Group
BLS	British Lichen Society
BLWS	Berkshire Local Wildlife Sites Project
BMG	Berkshire Mammal Group
BOC	Berkshire Bird Clubs
BOS	Banbury Ornithological Society
BRAG	Berkshire Reptile & Amphibian Group
BRC	Biological Record Centre (Monk's Wood)
BSBBG	Berks & South Berks Bat Group
BSBI	Botanical Society of the British Isles
BTC	Banbury Town Council
BTO	British Trust for Ornithology
BUWG	Bracknell Urban Wildlife Group
BWARS	Bees Wasps & Ants Recording Society
CaIRS	National Calliphoridae Recording Scheme
CBT	Childe Beale Trust
CDC	Cherwell District Council
COS	County Ornithological Services (also known as BCS)
CRPG	Cotswold Rare Plant Group
CSP	Cherwell Swift Project
EA	Environment Agency (formally the National Rivers Authority)
EC	Professional Ecological Consultant
ESB	Earthworm Society of Great Britain
ET	The Earth Trust (formally the Northmoor Trust)
FFF	Friends of Faringdon Folly

FHT	Freshwater Habitat Trust
FLC	Friends of Longcot Churchyard
FROG	Froglife
FSO	Fungus Survey of Oxfordshire
FWAG	Farmland Wildlife Advisory Group
GCN	GCN Licence Return Records
HA	Highways Agency
HWMT	Hurst Water Meadows Trust
IOSF	International Otter Survival Fund
IREC	IRECORD Website
LBRS	Longhorn Beetle Recording Scheme
LN	Local/National Expert (known to TVERC)
LWVP	Lower Windrush Valley Project
MGLG	Moor Green Lakes Group
MOD	Ministry of Defence
MOP	Member of the Public
MS	Mammal Society
NCRS	National (Trichoptera) Caddisfly Recording Scheme
NDD	National Dormouse Database
NE	Natural England/EN/NCC
NFC	Newbury Field Club
NHM	Natural History Museum
NNSS	Non-native Species Secretariat
NPD	National Ponds Database
NRG	Newbury Ringing Group
NT	National Trust
OBG	Oxfordshire Bat Group
OBRC	Oxfordshire Biological Record Centre
OBU	Oxford Brookes University
OCC	Oxfordshire County Council
OFG	Oxfordshire Flora Group
OLWS	Oxfordshire Local Wildlife Sites Project
OMG	Oxfordshire Mossing Group
OOS	Oxfordshire Ornithological Society
ORAG	Oxfordshire Reptile & Amphibian Group
OS	Otter Spotter Project
OUNHM	Oxford University Natural History Museum
OUWG	Oxford Urban Wildlife Group
OX	Oxford City Council
OxMG	Oxford Mammal Group
PC	Pond Conservation
PL	Plantlife
PT	Plant Tracker (non-native plant tracking app.)
PTES	People's Trust for Endangered Species

RBC	Reading Borough Council
RBWM	Royal Borough of Windsor & Maidenhead
RDNHS	Reading and District natural History Society
RM	Reading Museum
RRS	Riverfly Recording Scheme
RSPB	Royal Society for the Protection of Birds
RUWG	Reading Urban Wildlife Group
RWP	Reading Woodlands Plan
SARS	Soldierflies and Allies Recording Scheme
ScRS	Scarabaeoidea Recording Scheme
SepRS	Sepsidae Recording Scheme
SO	Science Oxford
SODC	South Oxfordshire District Council
SW	Shotover Wildlife
TVERC	Thames Valley Environmental Record Centre
TVFG	Thames valley Fungus Group
TW	Thames Water
U	Unknown
UKWOT	UK Wild Otter Trust
VCH	Victoria County History (historical records)
VWH	Vale of White Horse District Council
VWT	Vincent Wildlife Trust
WB	West Berkshire District Council
WBBRS	Weevil & Bark beetle Recording Scheme
WBC	Wokingham Borough Council
WFG	Wychwood Flora Group
WIA	Wildlife in Ascot Group
WILDCRU	Wildlife Conservation Research Unit
WMUWG	Windsor & Maidenhead Urban Wildlife Group
WODC	West Oxfordshire District Council
WS	Wytham Survey
WT	Woodland Trust
WWT	Wildfowl & Wetlands Trust
YE	Dick Greenaway, concerning land owned by Yattendon Estate

Bicester Heritage Designated Wildlife Sites



-  Local Wildlife Site
-  Proposed Local Wildlife Site
-  Woodland Trust Reserve
-  Biodiversity Opportunity Area/Conservation Target Area
-  Search Area

Scale: 1:35000

Oxfordshire Local Wildlife Site Citation

GAVRAY DRIVE MEADOWS

Site Code: 52W01

Grid Reference: SP595226

Area (ha): 15.2

Local Authority: Cherwell

Last Survey Date(s): February 2014

Date Selected or Reconfirmed:

Site Description

These meadows form a mosaic of small damp fields with ponds, divided by thick hedges with old trees. Most of the fields are probably former hay meadows over medieval ridge and furrow field patterns, and have a sward mostly dominated by tufted hair-grass with some meadow foxtail and meadow barley. However, fields 5 and 6 appear to be old pasture, with ragged robin, dropwort, devil's-bit scabious and common spotted orchid. Fields 7, 11 and 12 contain devil's-bit scabious and betony. Great burnet is frequent in fields 7 and 11, and scattered in fields 12, 14 and 16. Sneezewort and pepper saxifrage were only found in field 11. Common marsh bedstraw, bugle, greater bird's-foot trefoil, common knapweed and short-fruited willowherb are occasional throughout the fields. There is a very good range of rushes and sedges across the site, with nine species of sedge: glaucous, common, carnation, brown, hairy, false fox, spiked, slender tufted and oval. Grasses include yellow oat-grass, sweet vernal grass, tall fescue, meadow fescue and red fescue. In the drier areas, slightly acid conditions are indicated by frequent tormentil, lesser stitchwort and sweet vernal grass, especially in fields 5, 6, 14 and 15.

Most of the ponds in the western half of the site are shaded and/or only damp in summer. They have a species-poor vegetation of compact rush, plicate sweet-grass and tufted water-forget-me-not. CPM surveyed the ponds on the west side of the north-south road and reported great crested newt (a priority Biodiversity Action Plan species) in 3 ponds and a channel. Smooth newts were found in all ponds and the channel, and one palmate newt was recorded in field 9. The large water-filled pond in field 14 (on the eastern side of the road) contains greater reedmace, gypsywort, marsh foxtail, tufted water-forget-me-not, sharp-flowered rush and soft rush. The brook running along the western margin of the County Wildlife Site contains reed canary-grass, redshank, water chickweed and greater water plantain.

The hedges across the entire site are mostly tall and thick, and contain hawthorn with bramble, blackthorn and elder, as well as occasional crack willow, field maple, oak, ash, crab apple, English elm, dogwood, holly, wayfaring tree, guelder rose, buckthorn, hop and honeysuckle. They are probably post-medieval, as they dissect the ridge and furrow pattern that runs through most of the fields. The hedge that separates fields 5 and 6 from

fields 7 and 12 is a double hedge, with black bryony, mature oak, ash and crack willow, including one large collapsed crack willow pollard. The hedge that runs along the eastern edge of fields 11 and 12 is also double. These double hedge lines include Midland hawthorn, wood meadow-grass, great hairy brome and three-nerved sandwort; all four are ancient woodland indicator species (characteristic of woodlands more than 400 years old). The gappy hedge line between fields 11 and 12 contains five large mature oaks. The hedges around fields 8 and 9 contain abundant English elm suckers, as well as hawthorn and bramble. The bullace plum (*Prunus domestica* ssp. *insititia*), a rare and declining species in the county, is found in the hedge between fields 8 and 9.

Numerous birds are using the proposed County Wildlife Site, including reed bunting (which was seen flying across the road between fields 14 and 4), willow warbler, garden warbler, blackcap, whitethroat, lesser whitethroat, chiffchaff, bullfinch, linnet, song thrush, yellowhammer, sedge warbler, hobby and kestrel. Common pipistrelle, noctule, *Myotis sp.* and, possibly, serotine bats were recorded foraging over the site (CPM). Butterflies include large skipper, ringlet, common blue, small heath and marbled white. Twenty-six species of ground beetles were found in fields 5, 6, 11 and 12, including the nationally scarce *Bembidion gilvipes*.

SECTION 41 HABITATS OF PRINCIPAL IMPORTANCE: lowland meadows

SECTION 41 SPECIES OF PRINCIPAL IMPORTANCE: Reed bunting (3 or 4 singing males), song thrush (2 or 3 singing males), bullfinch, linnet; great crested newt.

RED DATA BOOK SPECIES:

NATIONALLY SCARCE SPECIES: *Bembidion gilvipes* a ground beetle

BIRDS OF CONSERVATION CONCERN:

Red list: Bullfinch, reed bunting, song thrush, yellowhammer, linnet.

Amber list: Dunnock, willow warbler.

TYPICAL SPECIES of LOWLAND MEADOW: Great burnet, greater bird's-foot trefoil, betony, cuckooflower, devil's-bit scabious, sneezewort, pepper saxifrage, brown sedge, carnation sedge, common sedge and meadow barley.

Oxfordshire Local Wildlife Site Description

BICESTER AIRFIELD

Site Code: 52X10

Grid Reference: SP599240

Area (ha): 161

Local Authority: Cherwell District Council

Last Survey Date(s): July & August 2012; Aug 2014

Designation Date: 2012, 2014

Site Description

The site is an airfield and surrounding areas of grassland and scrub. It includes areas of species-rich grassland and rough grassland around the periphery of the short mown grassland used as runways. There are also several old track ways that are breaking up and have an interesting range of plants.

To the south, the mosaic of species-rich grassland, early successional vegetation and scrub fits the description for open mosaic habitat on previously developed land. This area is species-rich with 24 of the species typical of this habitat as described in the 2010 DEFRA survey methodology for this habitat type.

The northern areas of the site are similar with areas of species-rich calcareous grassland. It includes upright-brome, cowslip, burnet saxifrage and common restharrow. To the north east, there are areas of open mosaic habitat including areas of degrading hard-standing with early successional vegetation, species-rich grassland and scrub. These areas include species such as mouse-ear hawkweed, black medick, common stork's-bill and the rare basil thyme.

There is a proposed extension to this site which consists of an area west of Skimmingdish Lane which supports grassland habitat.

SECTION 41 HABITATS OF PRINCIPAL IMPORTANCE: Lowland calcareous grassland, open mosaic habitats on previous developed land.

SECTION 41 SPECIES: Brown hare, Song Thrush, Common Starling, Dunnock, Tree Sparrow, Marsh Tit, Willow Tit, Common Bullfinch, Herring Gull, Yellowhammer, Skylark, Basil thyme, Small Heath, Buff Ermine, White Ermine, Cinnabar, Oak Hook-tip, Small Phoenix, Ghost Moth, Knot Grass, Large Nutmeg, Dusky Brocade, Mottle Rustic, Small Square-spot, Broom Moth, Shoulder-striped Wainscot

LEGALLY PROTECTED SPECIES: Badger, Red Kite

RED DATA BOOK SPECIES: Basil thyme, Adonis Blue, Small Heath

NATIONALLY SCARCE or NOTABLE SPECIES:

BIRDS OF CONSERVATION CONCERN:

Red list: Herring Gull, Song Thrush, Redwing, Common Starling, Tree Sparrow, Marsh Tit, Willow Tit, Yellowhammer, Skylark

Amber list: Green Woodpecker, Stock Pigeon, Red Kite, Common Kestrel, Common Bullfinch, House Martin, Meadow Pipit, Dunnock, Willow Warbler, Common Whitethroat, Lesser Black-backed Gull, Common Swift

TYPICAL SPECIES OF LOWLAND CALCAREOUS GRASSLAND: upright brome, greater knapweed, basil thyme, blue fleabane, burnet saxifrage, common restharrow, cowslip, hoary plantain, mouse-ear hawkweed, fairy flax, field scabious, ploughman's-spikenard, salad burnet, hairy violet, downy oat-grass, fern-grass, meadow oat-grass, musk thistle, common centaury and wild marjoram.

TYPICAL SPECIES OF OPEN MOSAIC HABITAT ON PREVIOUSLY DEVELOPED LAND: mugwort, black knapweed, common mouse-ear, smooth hawk's-beard, blue fleabane, perforate St. John's-wort, common toadflax, fairy flax, black medick, red bartsia, ribwort plantain, goat's-beard, hop trefoil, bladder campion, lesser trefoil, red clover, common centaury, field horsetail, eyebright, purple toadflax, tall melilot, wild mignonette, weld, lesser trefoil, yellow oat-grass and tufted vetch.

Oxfordshire Local Wildlife Site Citation

STRATTON AUDLEY QUARRY

Site Code: 62C01

Grid Reference: SU600251

Area (ha): 36.95

Local Authority: Cherwell

Last Survey Date(s): 31st July 2008 and 7th April 2009

Designation Date: 2010

Site Description

Stratton Audley Quarry is a former limestone quarry site. Since the cessation of quarrying the site has developed and is thought to qualify as Section 41 habitat of principal importance 'open mosaic habitats of previously developed land'. The southern area appears to be the most diverse botanically where the site is made up of a fine mosaic of habitats with areas of bare ground, ephemeral community, stunted willows, developing calcareous and neutral grassland with an area of narrow-leaved bird's foot-trefoil (currently on the Oxfordshire rare plants register), areas of marshy grassland, stands of bulrush and a large fishing lake where stonewort species are present. There is also structural diversity across the site with a couple of large spoil mounds, a steep slope adjacent to the lake and the variation from dry to wet/marshy habitats. The northern area has been worked until quite recently and is now made up of ephemeral and tall herb with a small lake, ponds and a couple of ephemeral shallow pools around the edge which hold stonewort species. The European Protected great crested newt is present at the site. Grey club-rush (currently on the Oxfordshire rare plants register) was recorded in 2003 in the northern small ditches. A range of plant species have been recorded at the site and include southern marsh orchid, bee orchid, common centaury, greater knapweed, eyebright, blue fleabane and fairy flax. The site is used by a range of birds including little ringed plover, snipe and skylark. Nationally scarce invertebrates recorded include hymenoptera species and a rove beetle *Haploglossa picipennis*, in 2000. There are also records for 33 'local' species, including banded demoiselle damselfly and black-tailed skimmer dragonfly. The site also includes a geological SSSI.

SECTION 41 HABITAT(S) of PRINCIPAL IMPORTANCE: Open Mosaic Habitats on Previously Developed Land, Ponds, Lowland Calcareous Grassland

SECTION 41 SPECIES OF PRINCIPAL IMPORTANCE: brown hare, skylark, lapwing, linnet, grey partridge, great crested newt, house sparrow, song thrush, small blue, small heath, grizzled skipper, bullfinch, dunnock, reed bunting, yellowhammer, marsh tit and starling.

RED DATA BOOK SPECIES: Great crested newt, Solitary bees - *Halictus confusus* and *Lasioglossum leucopum* ; and rove beetle - *Haploglossa picipennis*

NATIONALLY SCARCE SPECIES: ruddy darter, ground beetles *Harpalus azureus*, *Lebia chlorocephala* and bombardier beetle, a rove beetle *Haploglossa picipennis*, and; solitary bees and wasps - *Sphecodes crassus*, *Tiphia minuta*, *Lasioglossum malachurum*, *Lasioglossum pauxillum*, *Osmia bicolour* and *Andrena apicata*.

BIRDS OF CONSERVATION CONCERN:

Red list: grey partridge, skylark, linnet, lapwing, bullfinch, song thrush, yellowhammer, house sparrow, starling, marsh tit

Amber list: whitethroat, kestrel, snipe, green sandpiper, lesser black-backed gull, black-headed gull, stock dove, reed bunting, bullfinch, common tern, grey wagtail, common redshank, sand martin, swallow, swift, willow warbler, dunnoek, green woodpecker and kingfisher.

TYPICAL SPECIES OF LOWLAND CALCAREOUS GRASSLAND: Field scabious, greater knapweed, fairy flax, common centaury, quaking grass, kidney vetch, upright brome, fern grass, greater knapweed, blue fleabane, eyebright, ploughman's spikenard, bee orchid, mouse-ear-hawkweed and salad burnet.

TYPICAL SPECIES OF WETLAND: water mint, pink water-speedwell, water forget-me-not, gypsywort, common reedmace, Nuttal's pondweed, grey clubrush, great willowherb, wild angelica, common spike-rush, common club-rush, bittersweet, brooklime, reed canary-grass and marsh thistle.

Oxfordshire Proposed Local Wildlife Site Description

BICESTER AIRFIELD

Site Code: 52X10

Grid Reference: SP599240

Area (ha): 161.5

Local Authority: Cherwell

Site Description

Bicester airfield has extensive areas of grassland with extensive areas of lowland calcareous grassland at the edges along with developing species rich open mosaic communities on areas of hardstanding. The central areas appear to be short mown grassland. There are also areas with scrub habitat.

Oxfordshire Proposed Local Wildlife Site Citation

FIELD BY BEACON HILL DITCH

Site Code: 62G01

Grid Reference: SP624224

Area (ha): 9.46

Local Authority: Cherwell

Last Survey Date(s): 2008

Site Description

This field was identified by the Berkshire, Buckinghamshire and Oxfordshire Wildlife Trust as supporting lowland meadow habitat during grassland inventory work. Species found here include ragged robin, sneezewort, great burnet, pepper saxifrage, tubular water-dropwort and narrow-leaved water dropwort.

SECTION 41 HABITAT(S) OF PRINCIPAL IMPORTANCE: Lowland meadow

Island Pond Wood

Island Pond Wood is a small site of just over 4Ha located close to the village of Launton. It is a relatively new woodland planted in 1999 as part of The Woodland Trust's 'Woods on Your Doorstep' (WOYD) scheme. The local community help plant it and continue to take an active part in its management. The site is prone to flooding and the species mix reflects the low-lying wet conditions, with a high proportion of willow, alder and ash and also a minor component of native black poplar. Oak is also present. There is a pond in the northern corner that is fished under a permit system by local people. A main circular path goes around the bulk of the wood, together with other connecting paths.

Ray CTA (Conservation Target Area)

The alluvial floodplain of the River Ray extending along a number of small tributary streams and including some areas of land between these streams. This area extends into Buckinghamshire. The area extends onto the clay to include known areas of wet grassland and the main areas of ridge and furrow.

Joint Character Area: Thames and Avon Vales

Landscape Types: Alluvial Lowland with some areas of Clay Vale.

Geology: Mainly alluvium along the Ray. Alluvium is also present in narrow bands along the small streams and there are Oxford Clay mudstones away from the streams and river.

Topography. Flat riverside land. **Area of CTA:** 1192 hectares

Biodiversity:

- Lowland Meadow. The key habitat in this area. It is found in a number of SSSIs and Local Wildlife Sites mainly at least partly on the alluvium. North-west of Blackthorn Hill there is a larger group of meadows which are largely on the Oxford Clay. Remnants of this habitat are found elsewhere especially between Bicester and Blackthorn Hill and in some meadows in Buckinghamshire including BBOWT's recent addition to their Upper Ray Meadows Reserve at Leaches Farm.
- Wet Grassland/Floodplain Grazing Marsh. Wet grassland is found in meadows along with lowland meadow habitat with remnants elsewhere. Parts of the BBOWT Upper Ray Reserves have been restored to floodplain grazing marsh.
- Hedgerows. Some rich and well structured hedgerows with brown and black hairstreak.
- Ponds at Leaches Farm BBOWT reserve.
- Other Species: true fox sedge is found in a number of sites in the area.

Access: Largely restricted to bridleways and footpaths. There are a number of BBOWT nature reserves. Dorothy Bolton Meadow & Leaches Meadow currently have no public access, whilst Long Herdon & Grange are accessed via a public footpath. Access routes to a further two BBOWT reserves at Cow Leys and Leaches Farm are by existing public footpaths.

Archaeology: Extensive ridge and furrow.

Oxfordshire Biodiversity Action Plan Targets associated with this CTA:

1. Lowland meadow – management¹, restoration and creation (with a focus on MG4 hay meadows).
2. Floodplain grazing marsh - management, restoration and creation (with a focus on breeding waders).
3. Reedbed – creation.
4. Ponds – creation (particularly of pond complexes).
5. Hedgerows – management (good management of existing hedgerows on short and long-term rotation, which will benefit brown and black hairstreaks and other wildlife).
6. Rivers – management and restoration (resource protection of watercourses to maintain and improve water quality).

¹ "Management" implies both maintaining the quantity, and maintaining and improving the quality of existing BAP habitat and incorporates the following target definitions: "Maintaining extent" and "Achieving Condition".

GUIDANCE ON THE VARIOUS STATUTORY AND NON-STATUTORY WILDLIFE SITE DESIGNATIONS

SITE DESIGNATIONS THAT PROTECT THE UK'S NATURAL HERITAGE THROUGH STATUTE

LOCAL NATURE RESERVES (LNRS) (IN ENGLAND, SCOTLAND AND WALES)

Under the National Parks and Access to the Countryside Act 1949 LNRS may be declared by local authorities after consultation with the relevant statutory nature conservation agency. LNRS are declared and managed for nature conservation, and provide opportunities for research and education, or simply enjoying and having contact with nature.

NATIONAL NATURE RESERVES (NNRS)

NNRs contain examples of some of the most important natural and semi-natural terrestrial and coastal ecosystems in Great Britain. They are managed to conserve their habitats or to provide special opportunities for scientific study of the habitats communities and species represented within them.

NNRs are declared by the statutory country conservation agencies under the National Parks and Access to the Countryside Act 1949 and the Wildlife and Countryside Act 1981. In Northern Ireland, Nature Reserves are designated under the Amenity Lands Act (Northern Ireland) 1965.

RAMSAR SITES

Ramsar sites are designated under the Convention on Wetlands of International Importance, agreed in Ramsar, Iran, in 1971. Originally intended to protect sites of importance especially as waterfowl habitat, the Convention has broadened its scope over the years to cover all aspects of wetland conservation and wise use, recognizing wetlands as ecosystems that are extremely important for biodiversity conservation in general and for the well-being of human communities. The Convention adopts a broad definition of wetland, namely "areas of marsh, fen, peatland or water, whether natural or artificial, permanent or temporary, with water that is static or flowing, fresh, brackish or salt, including areas of marine water the depth of which at low tide does not exceed six metres". Wetlands "may incorporate riparian and coastal zones adjacent to the wetlands, and islands or bodies of marine water deeper than six metres at low tide lying within the wetlands".

There is only one Ramsar site in Berkshire or Oxfordshire, South West London Waterbodies.

SITES OF SPECIAL SCIENTIFIC INTEREST (SSSI) (ENGLAND, SCOTLAND AND WALES)

The SSSI series has developed since 1949 as the national suite of sites providing statutory protection for the best examples of the UK's flora, fauna, or geological or physiographical

Produced by TVERC
September 2012

features. These sites are also used to underpin other national and international nature conservation designations. Most SSSIs are privately-owned or managed; others are owned or managed by public bodies or non-government organisations.

Originally notified under the National Parks and Access to the Countryside Act 1949, SSSIs have been renotified under the Wildlife and Countryside Act 1981. Improved provisions for the protection and management of SSSIs were introduced by the Countryside and Rights of Way Act 2000 (in England and Wales) and the Nature Conservation (Scotland) Act 2004.

SPECIAL AREAS OF CONSERVATION (SAC) AND SITES OF COMMUNITY IMPORTANCE (SCI)

SACs are designated under the EC Habitats Directive. SACs are areas which have been identified as best representing the range and variety within the European Union of habitats and (non-bird) species listed on Annexes I and II to the Directive. SACs in terrestrial areas and territorial marine waters out to 12 nautical miles are designated under the Conservation (Natural Habitats, &c.) Regulations 1994 (as amended). New and/or amended Habitats sites which have been submitted to the European Commission by Government, but not yet formally adopted by the Commission, are referred to as candidate Special Areas of Conservation (cSACs). Sites which have been adopted by the EC, but not yet formally designated by governments of Member States are known as Sites of Community Importance (SCIs). In the UK, designation of SACs is devolved to the relevant administration within each country.

SACs, together with SPAs, form the Natura 2000 network.

SPECIAL PROTECTION AREAS (SPA)

SPAs are classified by the UK Government under the EC Birds Directive. SPAs are areas of the most important habitat for rare (listed on Annex I to the Directive) and migratory birds within the European Union. SPAs in terrestrial areas and territorial marine waters out to 12 nautical miles are classified under the Wildlife and Countryside Act 1981.

SPAs, together with SACs, form the Natura 2000 network.

NON-STATUTORY NATURAL HERITAGE CONSERVATION DESIGNATIONS

LOCAL WILDLIFE SITES

Local authorities for any given area may designate certain areas as being of local conservation interest. The criteria for inclusion, and the level of protection provided, if any, may vary between areas. Most individual counties have a similar scheme, although they do vary.

Most Local Wildlife Sites systems involve a panel of ecologists and others in the development of local criteria and the selection of the sites. Panels usually include a local government ecologist, an Natural England representative, the Local Wildlife Trust, the Local Environmental Record Centre and sometimes include a representative of local landowners and local naturalists.

These sites, which may be given various titles such as 'County Wildlife Sites' (CWS), 'Local Wildlife Sites' (LWS), 'Local Nature Conservation Sites' (LNCS), 'Sites of Importance for Nature Conservation' (SINCs), or Sites of Nature Conservation Importance' (SNICIs), together with statutory designations, are defined in local plans under the Town and Country Planning system and the National Planning Policy Framework and are a material consideration when planning applications are being determined.

As part of a national standardisation process these sites have recently been renamed as Local Wildlife Sites in Oxfordshire and Berkshire. Previously they were known as County Wildlife Sites in Oxfordshire and Wildlife Heritage Sites in Berkshire. Although the use of these names, especially in citations and descriptions, is being edited and replaced with Local Wildlife Sites or LWS it is likely that some references will remain to these former names until this is complete.

PROPOSED LOCAL WILDLIFE SITES AND EXTENSIONS

These are also included on designated sites maps. They are areas thought to include important areas of UKBAP habitat or priority or protected species populations. Extensions are likely to have similar habitats to the adjacent Local Wildlife Sites. Local Authorities are made aware of these sites. They will not have been fully surveyed and taken to the selection panel as yet.

NGO PROPERTIES / NATURE RESERVES

A variety of non-governmental organisations such as the John Muir Trust, Plantlife, the Royal Society for the Protection of Birds, Wildlife Trusts and Woodland Trust own or manage nature reserves or other areas of land that are important for biodiversity. These sites may be intended primarily for nature conservation, or for other purposes such as protection of landscape features or the provision public access to the countryside. These areas of themselves have no statutory basis, but a large number are also designated SSSIs / NNRs / SPAs / SACs / Ramsar sites, etc.

In Berkshire and Oxfordshire, BBOWT (Berks, Bucks & Oxon Wildlife Trust), Woodland Trust and RSPB sites fall into this category.

LOCAL GEOLOGICAL SITES (LGS)

Local Geological Sites formerly known as Regionally Important Geological and Geomorphological Sites (RIGS) are the most important places for geology and geomorphology outside statutorily protected land such as Sites of Special Scientific Interest (SSSI). As part of a national

standardisation process these sites have recently been renamed as Local Geological Sites in Oxfordshire and Berkshire. Sites are selected under locally-developed criteria, according to their value for education, scientific study, historical significance or aesthetic qualities. Whilst not benefiting from statutory protection, LGS are equivalent to Local Wildlife Sites, and "*...consideration of their importance becomes integral to the planning process*".

OTHER SITES

Occasionally other sites might be shown on maps. These are likely to be sites with some wildlife interest, usually managed by local groups, local authorities or town councils but which do not have a specific statutory or non-statutory designation.

Some local authorities within Oxfordshire and Berkshire have identified other sites which are protected through policies in their local plans, including Oxford Local Wildlife Sites in Oxford City and district wildlife sites in Cherwell.

CONSERVATION TARGET AREAS/ BIODIVERSITY OPPORTUNITY AREAS

These landscape scale areas have been identified as supporting high concentrations of UKBAP habitats and species populations and the potential to restore habitats at a landscape scale. These areas act as a focus for targeting resources into habitat management and restoration.

ANCIENT WOODLAND

Ancient woodland areas within Bracknell Forest and Wokingham Borough are from an updated layer of ancient woodland produced by TVERC for Bracknell Forest Council and Wokingham Borough Council in 2015-16. This data has been provided to Natural England but has not yet been made available and thus differs from that shown on the Magic Map Interactive Map. For information of the methodology for selecting ancient woodland areas please contact TVERC.