

FOR CONTINUATION REFER LLA DWG 1619 A6 13

FOR CONTINUATION REFER LLA DWG 1619 A6 16

PLANTING SCHEDULE

Number	Plant Name	Height	Container	Specification	Density
1431	Carpinus betulus	100-125cm	5L	Branched: 5 brks: C	3/m ²
1682	Escallonia 'Donard Seeding'	40-60cm	5L	Bushy: 5 brks: C	3/m ²
4920	Lonicera nitida 'Magrin'	7.5L	Bushy: 9 brks: C	3/m ²	
1397	Prunus laurocerasus 'Otto Luyken'	40-60cm	5-7.5L	Bushy: 5 brks: C	3/m ²

Total :9430 No.

SHRUBS

Number	Plant Name	Height	Container	Specification	Density
774	Aucuba japonica 'Crotonifolia'	40-60cm	5L	Bushy: 3 brks: C	5/m ²
105	Berberis thunbergii 'Atropurpurea Nana'	25-30cm	5L	Branched: 5 brks: C	5/m ²
168	Ceanothus 'Blue Mound'	5L	Bushy: 6 brks: C	5/m ²	
767	Choisya 'Aztec Pearl'	30-40cm	5L	Bushy: 6 brks: C	5/m ²
126	Choisya ternata 'Sundance'	40-60cm	7.5L	Bushy: 5 brks: C	5/m ²
293	Cistus x corbariensis	40-60cm	5-7.5L	Bushy: 6 brks: C	5/m ²
160	Cornus alba 'Spaethii'	60-80cm	5L	Branched: 4 brks: C	5/m ²
550	Euonymus fortunei 'Emerald 'n' Golf'	25-30cm	5-7.5L	Bushy: 9 brks: C	5/m ²
380	Euonymus fortunei 'Silver Queen'	20-30cm	5L	Bushy: 7 brks: C	5/m ²
42	Fatsia japonica	30-40cm	3L	Leader: C	5/m ²
103	Hebe 'Autumn Glory'	30-40cm	5L	Bushy: 7 brks: C	5/m ²
105	Hebe 'Great Orme'	30-40cm	5L	Bushy: 5 brks: C	5/m ²
348	Hebe 'Red Edge'	5-7.5L	Bushy: 7 brks: C	5/m ²	
385	Hebe rakaiensis	5-7.5L	Bushy: 7 brks: C	5/m ²	
66	Hydrangea macrophylla 'Madame Emile Moulliere'	40-60cm	5L	Branched: 5 brks: C	5/m ²
50	Hypericum moserianum 'Tricolor'	5-7.5L	Bushy: 7 brks: C	5/m ²	
10	Ilex aquifolium 'Alaska'	80-100cm	10L	Leader with Lateral: C	3/m ²
1050	Lavandula angustifolia 'Hidcote'	20-30cm	5L	Bushy: 7 brks: C	5/m ²
134	Lonicera pileata	5L	Bushy: 8 brks: C	5/m ²	
741	Pachysandra terminalis 'Green Carpet'	5L	Several Shoots: 11 brks: C	5/m ²	
77	Philadelphus 'Belle Etoile'	40-60cm	5-7.5L	Branched: 5 brks: C	5/m ²
48	Philonis frutescens	30-40cm	5-7.5L	Branched: 5 brks: C	5/m ²
596	Rosmarinus officinalis 'Severn Sea'	40-60cm	5L	Bushy: 5 brks: C	5/m ²
839	Ruscus aculeatus	30-40cm	3L	Several Shoots: 3 brks: C	5/m ²
465	Santolina chamaecyparissus	30-40cm	5L	Bushy: 8 brks: C	5/m ²
420	Sarcococca confusa	30-40cm	7.5L	Bushy: 7 brks: C	5/m ²
1126	Sarcococca hookeriana digyna	30-40cm	5L	Bushy: 6 brks: C	5/m ²
332	Skimmia japonica 'Kew White'	30-40cm	5L	Bushy: 4 brks: C	5/m ²
274	Spiraea japonica 'Goldflame'	30-40cm	5-7.5L	Bushy: 7 brks: C	5/m ²
1161	Viburnum davidii	30-40cm	5-7.5L	Bushy: 4 brks: C	5/m ²
380	Viburnum tinus 'Eve Price'	30-40cm	5L	Bushy: 5 brks: C	5/m ²
99	Viburnum x hillieri 'Wineol'	40-60cm	5L	Bushy: 7 brks: C	7/m ²
352	Vinca minor	5-7.5L	Several Shoots: 5 brks: C	5/m ²	

Total :12506 No.

HERBACEOUS

Number	Plant Name	Container	Specification	Density
90	Agapanthus Headbourne Hybrids	3L	Full Pot: C	5/m ²
61	Ajuga reptans	2L	Full Pot: C	6/m ²
154	Ajuga reptans 'Atropurpurea'	2L	Full Pot: C	5/m ²
21	Anemone hepatica 'Prinz Heinrich'	3L	Full Pot: C	5/m ²
115	Aquilegia canadensis	2L	Full Pot: C	5/m ²
20	Aster 'Little Carlow'	3L	Full Pot: C	5/m ²
65	Bergenia 'Bressingham Ruby'	3L	Full Pot: C	5/m ²
57	Bergenia 'Siberlich'	3L	Full Pot: C	5/m ²
29	Geranium macrorrhizum 'Album'	3L	Full Pot: C	5/m ²
160	Heelenium 'Moerheim Beauty'	3L	Full Pot: C	5/m ²
117	Heelenium hoopesii 'The Bishop'	3L	Full Pot: C	5/m ²
493	Heleborus niger	3L	Full Pot: C	5/m ²
140	Homocallis 'Crimson Pirate'	3L	Full Pot: C	5/m ²
150	Homocallis 'Golden Chimes'	3L	Full Pot: C	5/m ²
348	Homocallis 'Stafford'	3L	Full Pot: C	5/m ²
104	Heuchera 'Chocolate Ruffles'	3L	Full Pot: C	5/m ²
71	Heuchera 'Green Ivory'	3L	Full Pot: C	5/m ²
149	Heuchera micrantha 'Palace Purple'	3L	Full Pot: C	5/m ²
32	Nepeta nervosa	3L	Full Pot: C	5/m ²
83	Salvia officinalis 'Tricolor'	3L	Full Pot: C	6/m ²
70	Sedum 'Purple Emperor'	3L	Full Pot: C	5/m ²
10	Sedum 'Ruby Glow'	3L	Full Pot: C	5/m ²
143	Stachys byzantina 'Silver Carpet'	3L	Full Pot: C	5/m ²

Total :2682 No.

FERNS

Number	Plant Name	Container	Specification	Density
144	Asplenium scolopendrium	3L	Full Pot: C	5/m ²
378	Dryopteris affinis 'Cristata Angustata'	3L	Full Pot: C	5/m ²
265	Dryopteris filix-mas	3L	Full Pot: C	5/m ²

Total :787 No.

GRASSES

Number	Plant Name	Container	Specification	Density
41	Calamagrostis x acutiflora 'Karl Foerster'	3L	Full Pot: C	5/m ²
323	Carex buchananii	5L	Full Pot: C	5/m ²
131	Carex comans 'Frosted Curly'	3L	Full Pot: C	5/m ²
51	Carex elata 'Aurea'	3L	Full Pot: C	5/m ²
12	Deschampsia cespitosa 'Goldtau'	3L	Full Pot: C	5/m ²
39	Hakonechloa macra 'Aureola'	2L	Full Pot: C	6/m ²
623	Liriope muscari	3L	Full Pot: C	5/m ²
26	Miscanthus sinensis 'Kleine Fontäne'	3L	Full Pot: C	5/m ²

Total :1246 No.

LEGEND

- Existing Vegetation to be retained
- Proposed tree planting
- Proposed hedge
- Proposed shrub/herbaceous planting
- Native hedgerow
- Aquatic/Marginal planting
- Grass: Meadow (EM1 - Basic general purpose meadow mixture by Emergence seeds or similar approved)
- Grass:Mown
- Grass: Wetland (EG8 - Meadow grass mixture for wetlands by Emergence seeds or similar approved)

GENERAL NOTES

This drawing is to be used for planting information only, and is subject to alteration through changes to the site layout or until approved by the area designer.

Any species substitution by the contractor must be verified with the Landscape Architect through the Job Architect.

This layout must be checked in accordance with NHBC Standards 2013 (Chapter 4.2 - Building Near Trees & Chapter 9.2 Drives, Paths and Landscaping) by the Regional Engineer prior to implementation.

Excavations: Contractors must ensure that they have full information relating to service and drainage positions before undertaking any excavations.

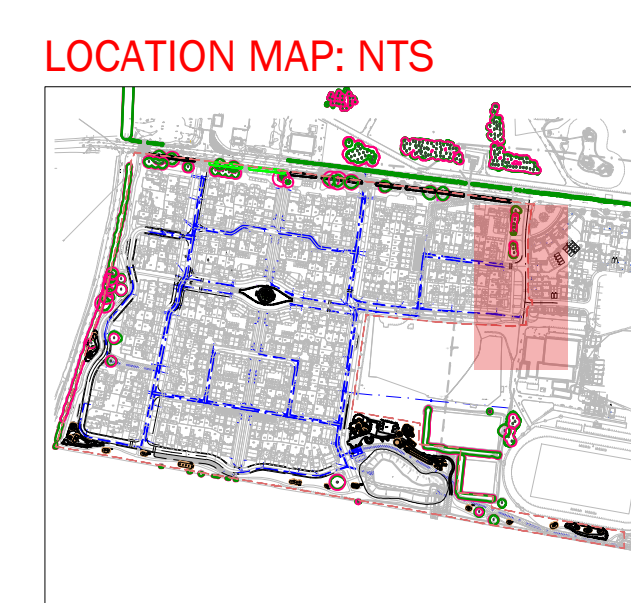
Root barriers to be used in association with tree planting adjacent to kerbs / services / footpaths etc. (Greenleaf ReRoot products or similar application, in accordance with manufacturers instructions).

NOTES:
Please note all planting mixes should be planted as follows:
Shrubs/Grasses to be planted in groups of 3-5 to the rear of the mix area. With herbaceous to be planted in groups of 3 randomly throughout mix area.

For Landscape Specification refer to drawing 1619 A6 17

For Rain Gardens refer to drawing 1619 A6 04

For Tree Specification refer to drawing 1619 A6 03



Rev	Date	Description
A	11.11.16	Tree No. reduced following comments
B	09.02.18	Tree planting amendments following tree removal
C	01.03.18	Planting amendments following architectural layout alterations
D	30.04.18	Plot number amendments
E	07.09.18	Arrangements & Schedule Updates
F	15.04.19	Site layout amended, proposals adjusted to coordinate
G	31.07.19	Adjustments to Schedule

Title: Detailed Planting Schedule Sheet 3 of 7

Project: [Redacted] - Phase 9

Client: [Redacted]

Date: 15 October 18

Scale: 1:2000 @ A0

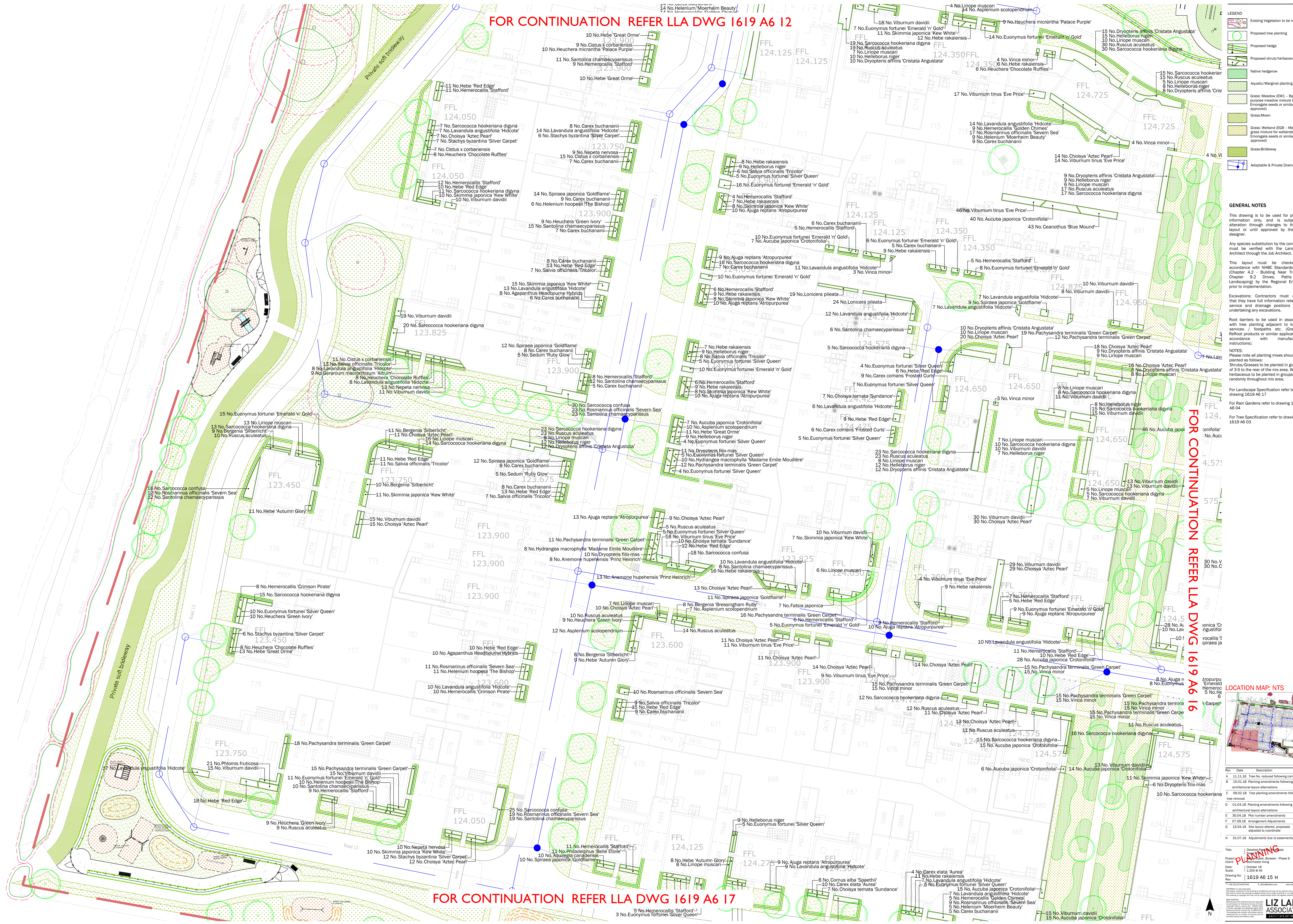
Drawing No: 1619 A6 14 G

Rev: [Redacted]

Y: +48 (BS277) MTD14 E: 0000000000 www.lizlake.com

LIZ LAKE ASSOCIATES

FOR CONTINUATION REFER LLA DWG 1619 A6 12



LEGEND

- Existing Vegetation to be retained
- Proposed tree planting
- Proposed hedge
- Proposed shrub/herbaceous planting
- Native hedgerow
- Aquatic/Marginal planting
- Grass: Meadow (EM1) - Basic general purpose meadow mixture by Enroutage seeds or similar approved
- Grass:Mown
- Grass: Wetland (EG8) - Meadow grass mixture for wetlands by Enroutage seeds or similar approved
- Grass: Bridleway
- Adoptable & Private Drainage

GENERAL NOTES

This drawing is to be used for planting information only, and is subject to alteration through changes to the site layout or until approved by the area designer.

Any species substitution by the contractor must be verified with the Landscape Architect through the Job Architect.

This layout must be checked in accordance with NHBC Standards 2013 (Chapter 4.2 - Building Near Trees & Chapter 9.2 - Drives, Paths and Landscaping) by the Regional Engineer prior to implementation.

Excavations: Contractors must ensure that they have full information relating to service and drainage positions before undertaking any excavations.

Root barriers to be used in association with tree planting adjacent to kerbs / services / footpaths etc. (Greenleaf ReRoot products or similar application, in accordance with manufacturers instructions).

NOTES:

Please note all planting mixes should be planted as follows:

- Shrubs/Grasses to be planted in groups of 3 to the rear of the mix area. With herbaceous to be planted in groups of 3 randomly throughout mix area.

For Landscape Specification refer to drawing 1619 A6 17

For Rain Gardens refer to drawing 1619 A6 04

For Tree Specification refer to drawing 1619 A6 03

FOR CONTINUATION REFER LLA DWG 1619 A6 16

LOCATION MAP: NTS

REV. DATE. DESCRIPTION

A	11.11.16	Tree No. reduced following comments
B	15.01.18	Planting amendments following architectural layout alterations
C	09.02.18	Tree planting amendments following tree removal
D	01.03.18	Planting amendments following architectural layout alterations
E	30.04.18	Plot number amendments
F	07.09.18	Arrangement Adjustments
G	15.04.19	Site layout altered, proposals adjusted to coordinate
H	31.07.19	Adjustments due to easements

PROJECT: Details of the site
 Client: Southchester Living
 Date: 15 October 18
 Scale: 1:200 @ A0
 Drawing No: 1619 A6 15 H
 Rev: 1

PLANNING

LIZ LAKE ASSOCIATES

FOR CONTINUATION REFER LLA DWG 1619 A6 17

FOR CONTINUATION REFER LLA DWG 1619 A6 12

FOR CONTINUATION REFER LLA DWG 1619 A6 13

- LEGEND**
- Existing Vegetation to be retained
 - Proposed tree planting
 - Proposed hedge
 - Proposed shrub/herbaceous planting
 - Native hedgerow
 - Aquatic/Marginal planting
 - Grass: Meadow (EM1 - Basic general purpose meadow mixture by Energize seeds or similar approved)
 - Grass:Mown
 - Grass: Wetland (EG8 - Meadow grass mixture for wetlands by Energize seeds or similar approved)
 - Adopted & Private Drainage

GENERAL NOTES

This drawing is to be used for planting information only, and is subject to alteration through changes to the site layout or until approved by the area designer.

Any species substitution by the contractor must be verified with the Landscape Architect through the Job Architect.

This layout must be checked in accordance with NHBC Standards 2013 (Chapter 4.2 - Building Near Trees & Chapter 9.2 Drives, Paths and Landscaping) by the Regional Engineer prior to implementation.

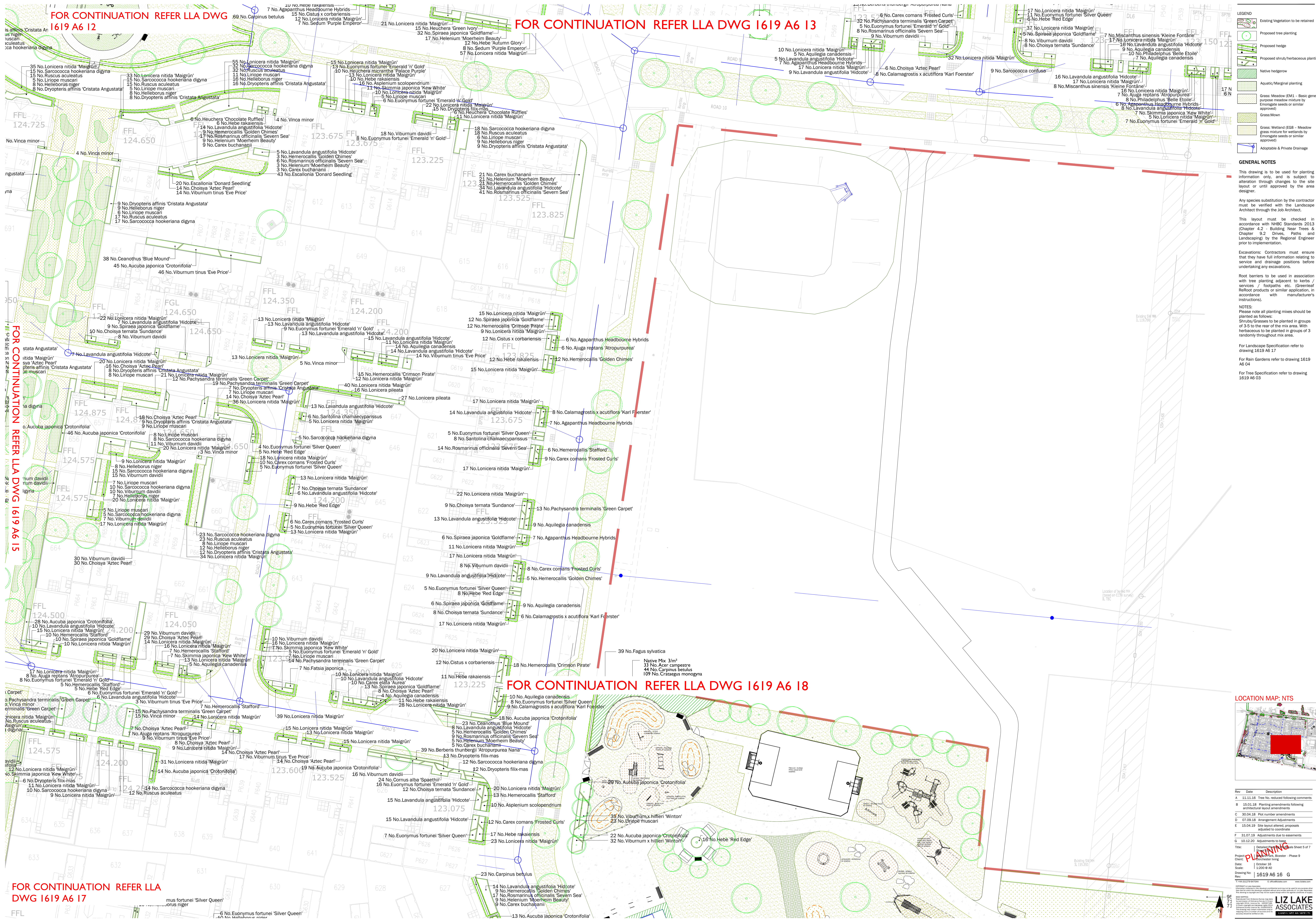
Excavations: Contractors must ensure that they have full information relating to service and drainage positions before undertaking any excavations.

Root barriers to be used in association with tree planting adjacent to walls / services / footpaths etc. (Greenleaf ReRoot products or similar application, in accordance with manufacturers instructions).

NOTES:

Please note all planting mixes should be planted as follows:
 Shrubs/Grasses to be planted in groups of 3 to 5 to the rear of the mix area. With herbaceous to be planted in groups of 3 randomly throughout mix area.

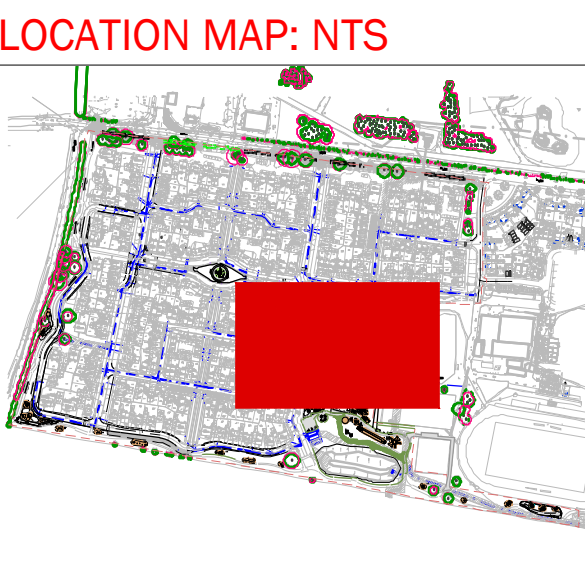
For Landscape Specification refer to drawing 1619 A6 17
 For Rain Gardens refer to drawing 1619 A6 04
 For Tree Specification refer to drawing 1619 A6 03



FOR CONTINUATION REFER LLA DWG 1619 A6 15

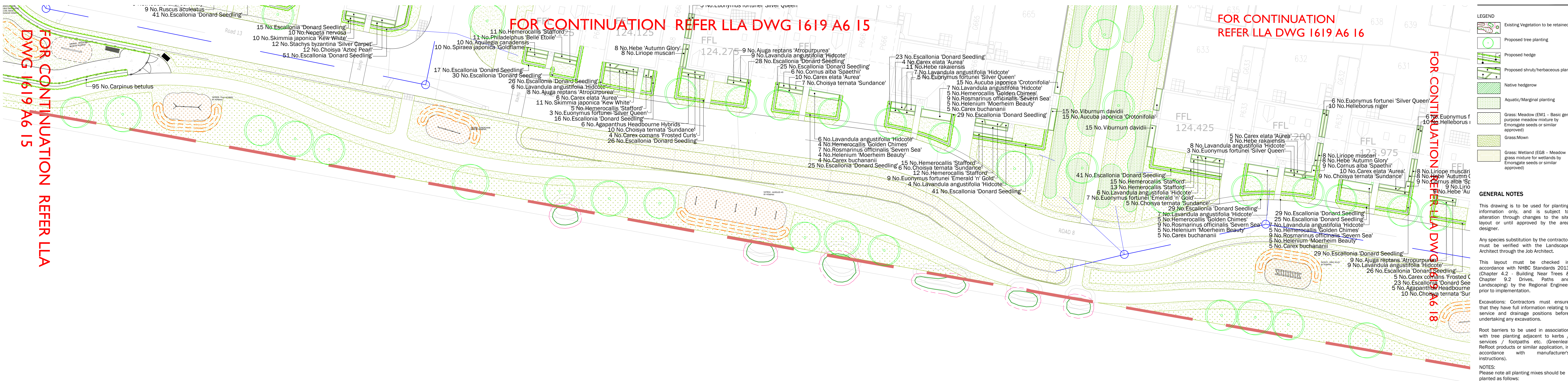
FOR CONTINUATION REFER LLA DWG 1619 A6 18

FOR CONTINUATION REFER LLA DWG 1619 A6 17



Rev	Date	Description
A	11.11.16	Tree No. indicated following comments
B	15.01.18	Planting amendments following architectural layout amendments
C	30.04.18	Plot number amendments
D	07.08.18	Amalgamation adjustments
E	15.04.19	Site layout altered, proposals adjusted to coordinate
F	31.07.19	Adjustments due to easements
G	10.12.20	Adjustments to bore

Title: Details of Planting - Phase 9
 Project: [Redacted]
 Client: [Redacted]
 Scale: 1:2000 @ A0
 Drawing No: 1619 A6 16 G



FOR CONTINUATION REFER LLA DWG 1619 A6 15

FOR CONTINUATION REFER LLA DWG 1619 A6 16

FOR CONTINUATION REFER LLA DWG 1619 A6 18

LEGEND

- Existing Vegetation to be retained
- Proposed tree planting
- Proposed hedge
- Proposed shrub/herbaceous planting
- Native herb/shrub
- Aquatic/Marginal planting
- Grass: Meadow (EM1 - Basic general purpose meadow mixture by Encourage seeds or similar approved)
- Grass:Mown
- Grass: Wetland (EG8 - Meadow grass mixture for wetlands by Encourage seeds or similar approved)

GENERAL NOTES

This drawing is to be used for planting information only, and is subject to alteration through changes to the site layout or until approved by the area designer.

Any species substitution by the contractor must be verified with the Landscape Architect through the Job Architect.

This layout must be checked in accordance with NHBC Standards 2013 (Chapter 4.2 - Building Near Trees & Chapter 9.2 Drives, Paths and Landscaping) by the Regional Engineer prior to implementation.

Excavations: Contractors must ensure that they have full information relating to service and drainage positions before undertaking any excavations.

Root barriers to be used in association with tree planting adjacent to kerbs / services / footpaths etc. (Greenleaf ReRoot products or similar application, in accordance with manufacturers instructions).

NOTES:

Please note all planting mixes should be planted as follows:

Shrubs/Grasses to be planted in groups of 3 to 5 to the rear of the mix area. With herbaceous to be planted in groups of 3 randomly throughout mix area.

For Landscape Specification refer to drawing 1619 A6 17

For Rain Gardens refer to drawing 1619 A6 04

For Tree Specification refer to drawing 1619 A6 03

LANDSCAPE SPECIFICATION

SITE PREPARATION

Topsoil
Existing topsoil shall be stripped before building works begin. Imported topsoil shall be to BS3682: 2007 Specification for Topsoil and Requirements for Use. Topsoil shall be multi-purpose grade, of medium texture, with a high proportion of fertile loamy material. It shall be free from subsoil, rubbish, rubble, contamination, roots of perennial weeds and other materials injurious to plant growth. The maximum stone content of the soil shall be 20%, with the maximum size of stone 25mm in any one dimension. All topsoil shall be stacked in heaps, not exceeding 2m high. During storage, topsoil heaps shall be kept free from compaction, contamination and weeds.

Excavation
Excavation shall NOT be undertaken within the root protection area of any existing trees or shrubs to be retained. Unless otherwise indicated areas to be planted / seeded shall be cleared of all surface rubbish and excavated to the dimensions below finished level as follows, when the soil is not waterlogged or frozen. Ensure the location of all services is known before any excavation operations.

Tree pits: As per detail
Shrub and hedge pit / trench: 450mm deep
Grass areas: 300mm deep
Wildflower grassland areas: Excavate to finished levels

The base of excavated areas shall be forked or otherwise cultivated to a depth of 150mm to facilitate drainage and all bricks, stones and other debris, etc. over 75mm in any one dimension shall be removed. Similarly, areas trafficked by construction vehicles shall be ripped to a depth of 150-300mm to relieve compaction.

Backfilling with Subsoil
Where excavated areas are lower than the required depths, excavations shall be backfilled with selected subsoil and lightly compacted to make up levels. Selected subsoil shall be friable, second quality topsoil or similar and be free of rubbish, roots, stones over 75mm in any one dimension, perennial weeds and other materials injurious to plant growth.

Backfilling with Topsoil
Tree, shrub and hedge pit / trench excavations shall be backfilled, in layers, with clean topsoil (as specified above) thoroughly mixed with planting compost e.g. 'Metcout Topgrow' compost at a rate of 20 litres/m³. An approved tree and shrub fertilizer shall be added to topsoil, prior to backfilling tree-pits. Grass areas (excluding wildflower grassland areas) shall be backfilled with topsoil in layers of 150mm depth.

Cultivation
Prior to cultivation if planting / seeding areas are weed infested, weed growth to be trimmed, the arisings removed and re-growth treated with an approved herbicide ie Glyphosate. Treatment to be undertaken in the growing season preceding planting, at a minimum 4 weeks prior to works to allow for repeat treatment if necessary.

Cultivation shall not be undertaken within the root protection area of any trees / shrubs to be retained, without prior agreement from the Local Planning Authority. Topsoil shall be cultivated by hand or machine prior to planting, with minimal compaction by machine. Cultivate to the following depths and tith, removing all rubbish, vegetation, perennial weeds, roots, stones over 25mm in any one dimension and rake to even levels.

Planting areas: 300mm deep cultivation to medium tith
Grass seeding areas: 150mm deep cultivation to fine tith raked to a smooth evenly firmed bed
Turf areas: 150mm deep cultivation to medium tith raked to a smooth evenly firmed bed
Wildflower grassland areas: 150mm deep cultivation to medium tith raked to a smooth evenly firmed bed

Wildflower grassland areas: Where un-excavated areas are to be seeded with wildflower grassland mix the topsoil shall be cultivated to turn the soil over to a depth of 300mm to bring subsoil to the surface. Elsewhere, excavated areas to be seeded with wildflower grassland mix to be backfilled to finished levels with subsoil (as above).

PLANTING

Plant Stock and Timing
Plant material and operations shall conform to BS5854: 2014, BS 3936 Nursery Stock (Parts 1-10), BS 4428: 1989, BS 4043: 1989 and BS 5837: 2012. The planting season shall be from the 1st October to the 31st March. Container grown stock may be planted outside this season if accompanied by daily watering; or as necessary to ensure healthy establishment. Planting shall not be carried out during periods of frost, drought, cold drying winds or when the soil is waterlogged or frozen.

Planting
All planting that is within the root protection area of existing trees/shrubs to be retained, shall be undertaken by hand and positions altered should tree roots be encountered, in order to avoid damage to the root system.

All plants shall be set out evenly over the areas as indicated, to the density and quantities shown. All plants shall be planted upright at the same depth as the nursery soil level and evenly spaced, leaving room for growth. All restrictive containers shall be removed with roots not touched. Immediately following planting, all plants shall be watered-in to field capacity.

Tree Planting and Support
Trees planted in landscape areas shall be installed as specified.
All trees to be firmed in after planting. All trees shall have irrigation / aeration system units fitted to fully surround the root ball.

Hedge Planting
Hedges shall be planted in a single row as per detail. Dead, damaged or straggly branches shall be removed after planting. All transplants in hedge and native mixes shall be fitted with individual protection in shrub shelters, spiral guards as specified, or alternatively the planting areas shall be protected with rabbit-proof fencing. All shrub shelters / spiral guards shall be black or green, adequately supported and installed to allow for expansion.

Mulching
Prior to the application of mulch the planting areas shall be completely weed free and watered sufficiently to achieve field capacity. The surface of the planting areas shall be mulched with a minimum 75mm depth layer of 15-65mm nominal particle size, dark, matured woodchip mulch, ensuring that the low branches of trees, shrubs and/or herbaceous plants are NOT smothered.

Mulch shall be an approved product and completely weed and weed seed free. The mulch shall be topped-up to maintain, after settlement, a depth of not less than 50mm. Trees in grass areas shall be planted centrally within a 1m diameter mulch bed, to be mulched to 75mm depth. The surface of mulch to be 10mm below the surface of adjacent lawn / hard surface.

GRASS AREAS

Turf
Turf shall accord with BS 3969: 1998, it shall be good quality meadow / cultivated, amenity turf free from weeds and be laid on even, prepared ground (as detailed above), during periods of suitable warm and moist weather conditions. Pre-turfing fertiliser shall be applied to manufacturer's recommendations and turf shall be laid in accordance with BS 4428: 1989.

Turf shall be laid with broken joints well-butted up, working from timber planks to avoid shrinkage and achieve satisfactory establishment. Undertake good horticultural practice to ensure establishment of a healthy grass sward.

Grass Seeding
Areas of amenity grass shall be seeded with a general amenity grass mix as specified during the period March to May or September to October, during periods of moist, warm weather conditions without significant wind. Pre-seeding fertiliser shall be applied to manufacturer's recommendations. Seed shall be sown on even, prepared ground (as detailed above), at a rate of 35g/m² or as specified, in two transverse operations. Lightly roll seed bed after sowing. Water as necessary to avoid shrinkage and achieve satisfactory establishment. Undertake good horticultural practice to ensure establishment of a healthy grass sward.

Wildflower Grassland Seeding
Areas of wildflower grassland shall be seeded with a wildflower grassland mix suitable for the soil type as specified, during the period March to May or September to October, during periods of suitable warm and moist weather conditions. Seed shall be sown on prepared ground (as detailed above), at a rate of 5g/m² or as specified. Lightly roll seed bed after sowing. Water as necessary to avoid shrinkage and achieve satisfactory establishment. Undertake good horticultural practice to ensure establishment of a healthy wildflower grass sward.

AFTERCARE PERIOD

Regular Visits
During the specified Aftercare Period maintenance visits shall be carried out, at least monthly from April to September and twice during the dormant season to carry out the following operations to establish healthy growing plants / grass in weed free areas: watering, firming-up, removal of litter, pest and disease control, general pruning, checking guards, ties and stakes, weed control, grass cutting and autumn tidying. All arisings shall be carted away and the site shall be left clean and tidy at all times.

Watering
All planting and grass areas shall not be allowed to dry out and shall be kept well watered during the growing season, ensuring the soil is kept moist at all times but avoiding waterlogging.

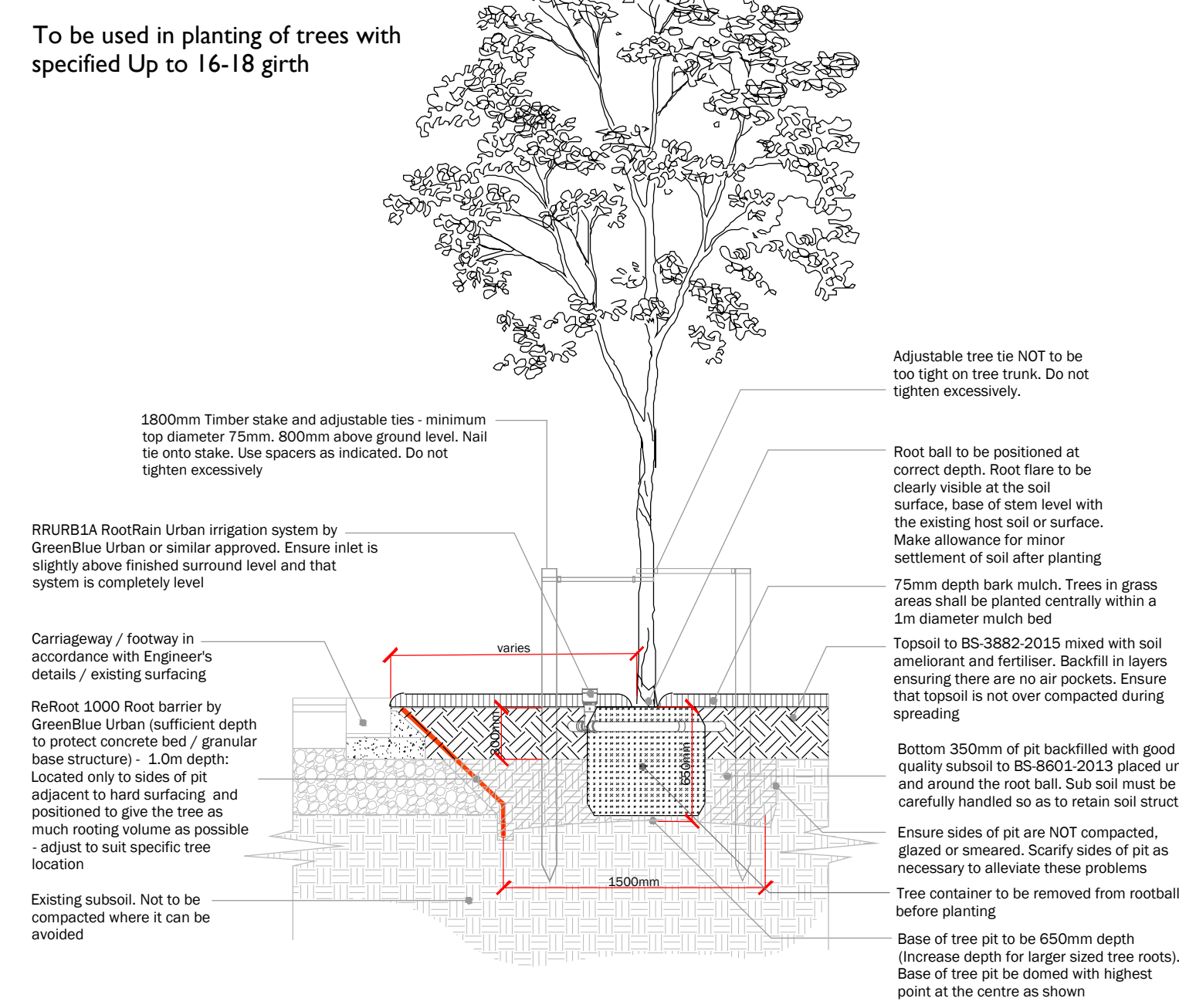
Replacement Planting
During each August within the Aftercare Period an inspection shall be made and all plants that have died, are missing, damaged or have failed to thrive, shall be noted and replaced in the following planting season.

Grass Cutting
During the first and subsequent growing seasons amenity grass shall be kept at a height of 25mm to 50mm. Any bare patches are to be resown. Selective weed control shall be undertaken as necessary once the sward is sufficiently established.

Wildflower Grassland Cutting
During the first growing season cut wildflower grassland every 2 months to a height of 50mm and in subsequent growing seasons cut to 50mm height during late March and late August / early September or as specified. All arisings shall be collected and removed from the site to avoid smothering the sward and to reduce nutrient levels. Spot treat perennial weeds with Glyphosate at the manufacturer's recommended dose rate / or hand pull.

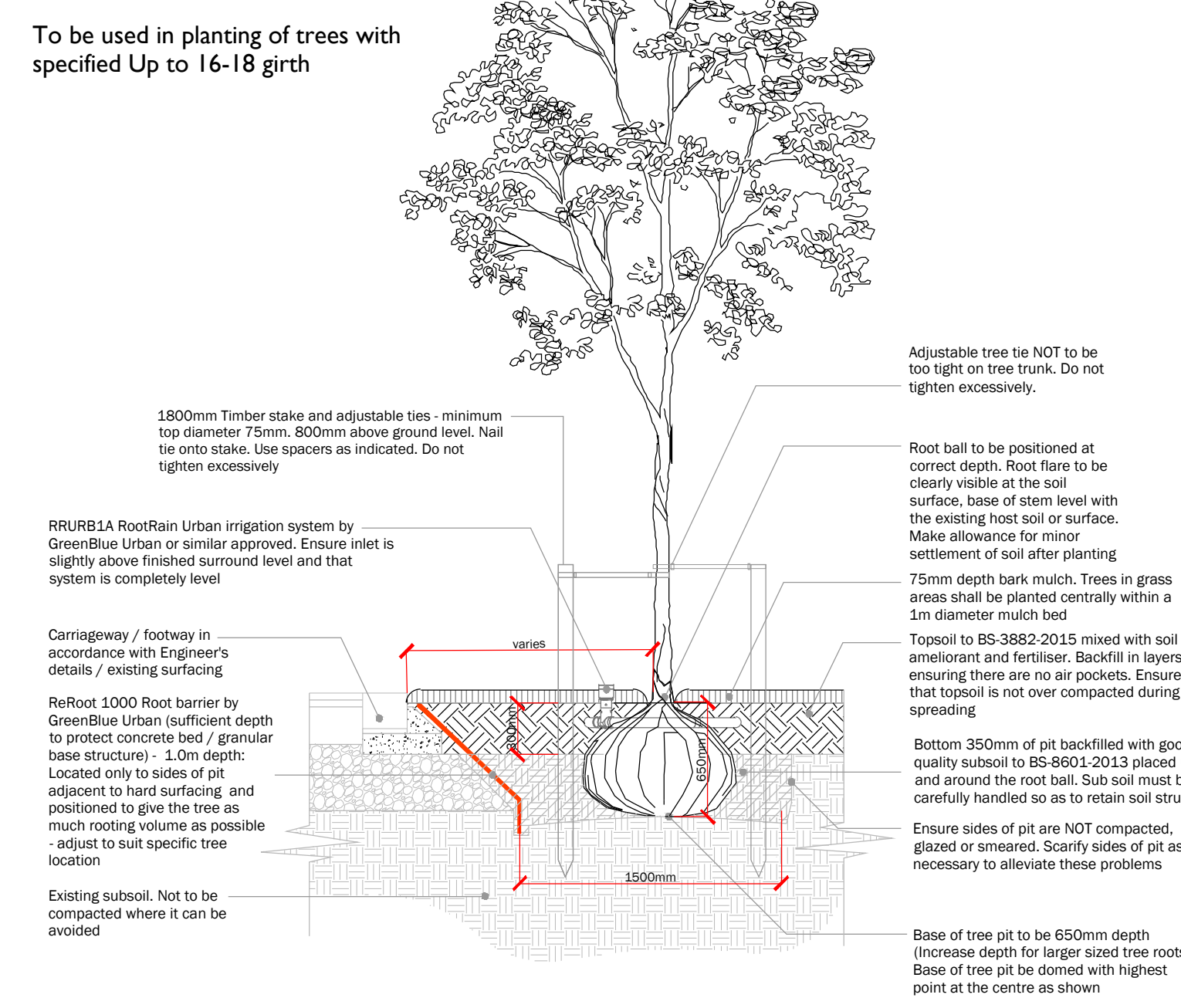
TYPICAL TREE PLANTING DETAIL- Container grown tree. Double stake fixing in soft landscape adjacent to Carriageway/footway- Not to scale

To be used in planting of trees with specified Up to 16-18 girth



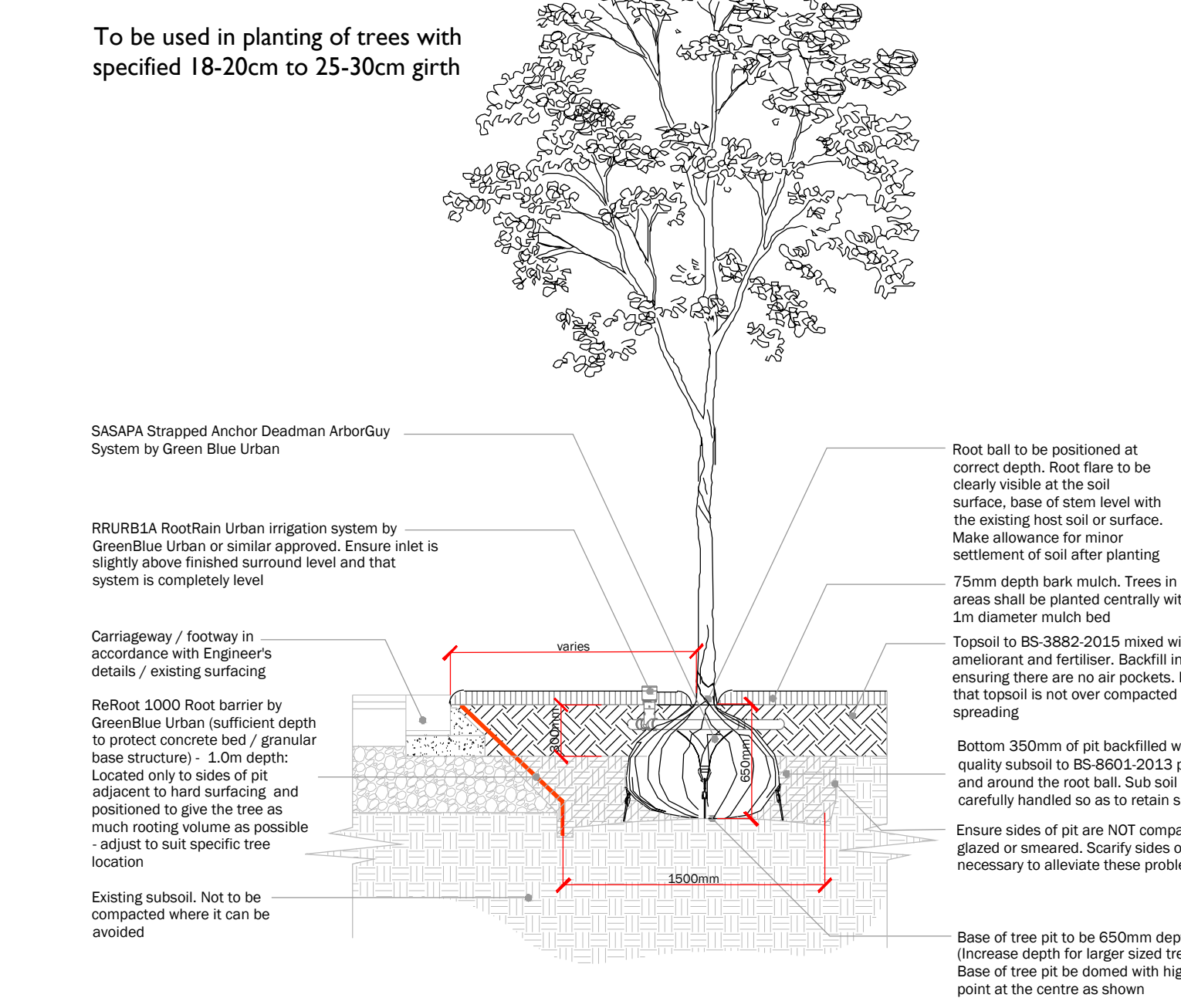
TYPICAL TREE PLANTING DETAIL- Root balled tree. Double stake fixing in soft landscape adjacent to Carriageway/footway- Not to scale

To be used in planting of trees with specified Up to 16-18 girth

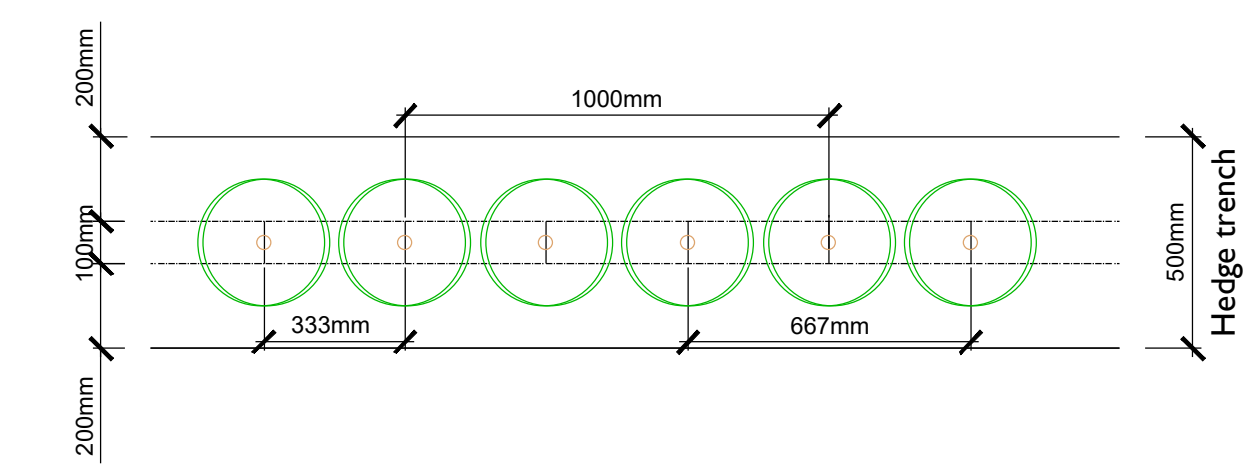


TYPICAL TREE PLANTING DETAIL- Root balled tree. Underground Guying System in soft landscape adjacent to Carriageway/footway- Not to scale

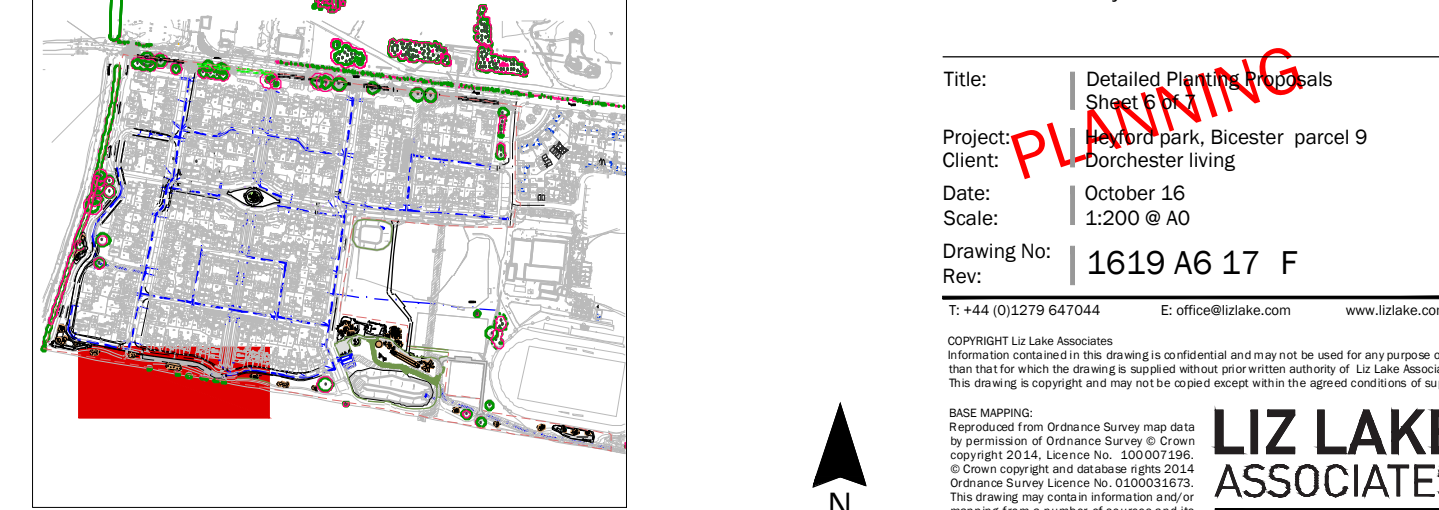
To be used in planting of trees with specified 18-20cm to 25-30cm girth



HEDGE PLANTING DETAIL - 3/m (NTS)



LOCATION MAP: NTS



Rev	Date	Description
A	11.11.16	Tree No. reduced following comments/ Tree specification updated
B	15.01.18	Planting amendments following architectural layout amendments
C	30.04.18	Pixt number amendments
D	07.09.18	Planting amendments following architectural layout amendments. Hedge detail revised
E	15.04.19	Site layout altered, proposals adjusted to coordinate
F	10.12.20	Adjustments to base

Title: [Redacted]
Client: [Redacted]
Date: [Redacted]
Scale: 1:5000 6 A0
Drawing No: 1619 A6 17 F

FOR CONTINUATION REFER LLA DWG 1619 A6 16

- LEGEND**
- Existing Vegetation to be retained
 - Proposed tree planting
 - Proposed hedge
 - Proposed shrub/herbaceous planting
 - Native hedgerow
 - Grass: Meadow (EMS) - Basic general purpose meadow mixture by Ervongate seeds or similar approved
 - Grass:Mown
 - Grass: Wetland (EGS) - Meadow grass mixture for wetlands by Ervongate seeds or similar approved
 - Adoptable & Private Drainage

GENERAL NOTES

This drawing is to be used for planting information only, and is subject to alteration through changes to the site layout or until approved by the area designer.

Any species substitution by the contractor must be verified with the Landscape Architect through the Job Architect.

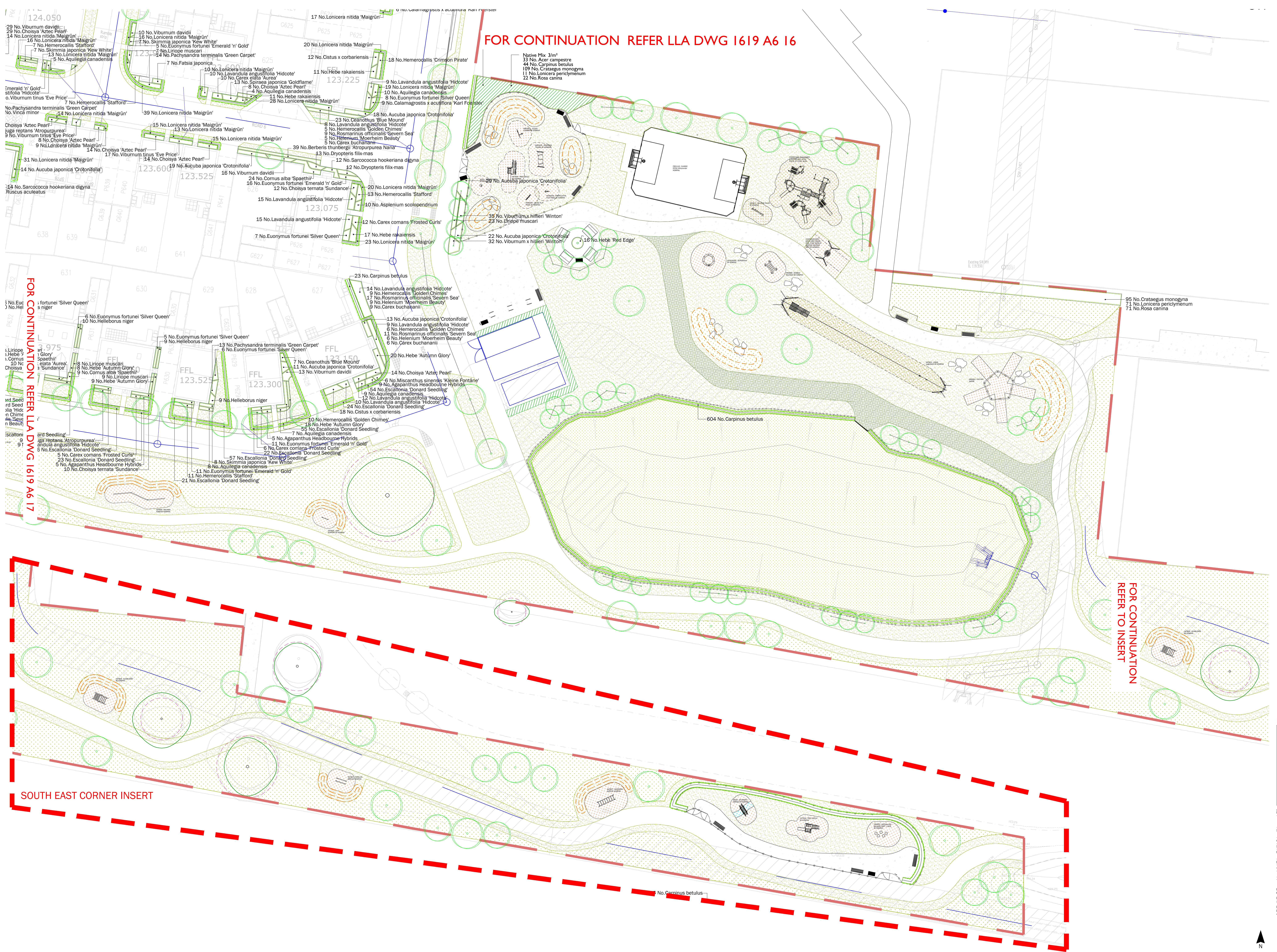
This layout must be checked in accordance with NHBC Standards 2013 (Chapter 4.2 - Building Near Trees & Chapter 9.2 - Drives, Paths and Landscaping) by the Regional Engineer prior to implementation.

Excavations: Contractors must ensure that they have full information relating to service and drainage positions before undertaking any excavations.

Root barriers to be used in association with tree planting adjacent to kerbs / services / footpaths etc. (Greenleaf ReRoot products or similar applications, in accordance with manufacturer's instructions).

NOTES:
Please note all planting mixes should be planted as follows:
Shrubs/Grasses to be planted in groups of 3-5 to the rear of the mix area. Site herbaceous to be planted in groups of 3 randomly throughout mix area.

For Landscape Specification refer to drawing 1619 A6 17
For Rain Gardens refer to drawing 1619 A6 04
For Tree Specification refer to drawing 1619 A6 03



FOR CONTINUATION REFER LLA DWG 1619 A6 17

FOR CONTINUATION REFER TO INSERT

SOUTH EAST CORNER INSERT

LOCATION MAP: NTS



Rev	Date	Description
A	11.11.16	Tree No. reduced following comments/ Tree specification updated
B	15.01.18	Planting arrangements following architectural layout amendments
C	20.04.18	Plot number amendments
D	07.08.18	Arrangements & Planting Adjustments
E	15.04.19	Site layout altered, proposals adjusted to coordinate
F	31.07.19	Adjustments due to easements
G	28.08.19	Maintenance Access Adjustment
H	20.12.20	Adjustments to base

Title: Detailed Planting
Project: South East Living
Client: [Redacted]
Scale: 1:2000 @ A0
Drawing No: 1619 A6 18 H

Stansted:
Unit 1, The Exchange,
9 Station Road,
Stansted, CM24 8BE

t +44 (0)1279 647044
e office@lizlake.com
www.lizlake.com

Bristol:
1 Host Street,
Bristol, BS1 5BU

t +44 (0)117 927 1786
e office@lizlake.com
www.lizlake.com

Nottingham:
3 Newcastle Chambers
Angel Row
Nottingham
NG1 6HL
t +44 (0)115 784 3566
e office@lizlake.com
www.lizlake.com

LIZ LAKE
ASSOCIATES
LANDSCAPE ARCHITECTS

- Landscape Design
- Urban Design
- Residential
- Public Realm
- Masterplanning
- Landscape Planning
- Heritage Landscapes
- Gardens and Estates
- Restoration and Conversion
- Places of Worship
- Expert Witness
- Hospitality
- Education
- Retail / Office
- Community
- Ecology
- Arboriculture
- 3D / Graphic Design