

# HEYFORD PARK, PHASE 9, BICESTER

## LANDSCAPE AND ECOLOGICAL MANAGEMENT PLAN

### DRAWINGS

January 2021

---

1619 A6 03 Rev J	Detailed Tree Planting Proposal
1619 A6 04 Rev E	Rain Gardens Detailed Planting Proposal
1619 A6 05 Rev I	Eastern POS Proposal
1619 A6 06 Rev F	Trim Trail Detailed Landscape Proposal
1619 A6 07 Rev E	South Eastern LAP Proposal
1619 A6 08 Rev E	South Western LEAP 2 Proposal
1619 A6 09 Rev D	Western LAP 2 Proposal
1619 A6 11 Rev E	Central LAP Proposal
1619 A6 12 Rev F	Detailed Planting Proposal 1 of 7
1619 A6 13 Rev D	Detailed Planting Proposal 2 of 7
1619 A6 14 Rev G	Detailed Planting Proposal 3 of 7
1619 A6 15 Rev H	Detailed Planting Proposal 4 of 7
1619 A6 16 Rev G	Detailed Planting Proposal 5 of 7
1619 A6 17 Rev F	Detailed Planting Proposal 6 of 7
1619 A6 18 Rev H	Detailed Planting Proposal 7 of 7

**LEGEND**

- Existing Vegetation to be retained
- Proposed Trees
- Adoptable & Private Drainage

**GENERAL NOTES**

This drawing is to be used for planting information only, and is subject to alteration through changes to the site layout or until approved by the area designer.

Any species substitution by the contractor must be verified with the Landscape Architect through the Job Architect.

This layout must be checked in accordance with NHC Standards 2013 (Chapter 4.2 - Building Near Trees & Chapter 9.2 Drives, Paths and Landscaping) by the Regional Engineer prior to implementation.

Excavations: Contractors must ensure that they have full information relating to service and drainage positions before undertaking any excavations.

Root barriers to be used in association with tree planting adjacent to kerbs / services / footpaths etc. (Greenleaf ReRoot products or similar application, in accordance with manufacturer's instructions).

For Landscape Specification refer to drawing 1619 A6 17



**TREES**

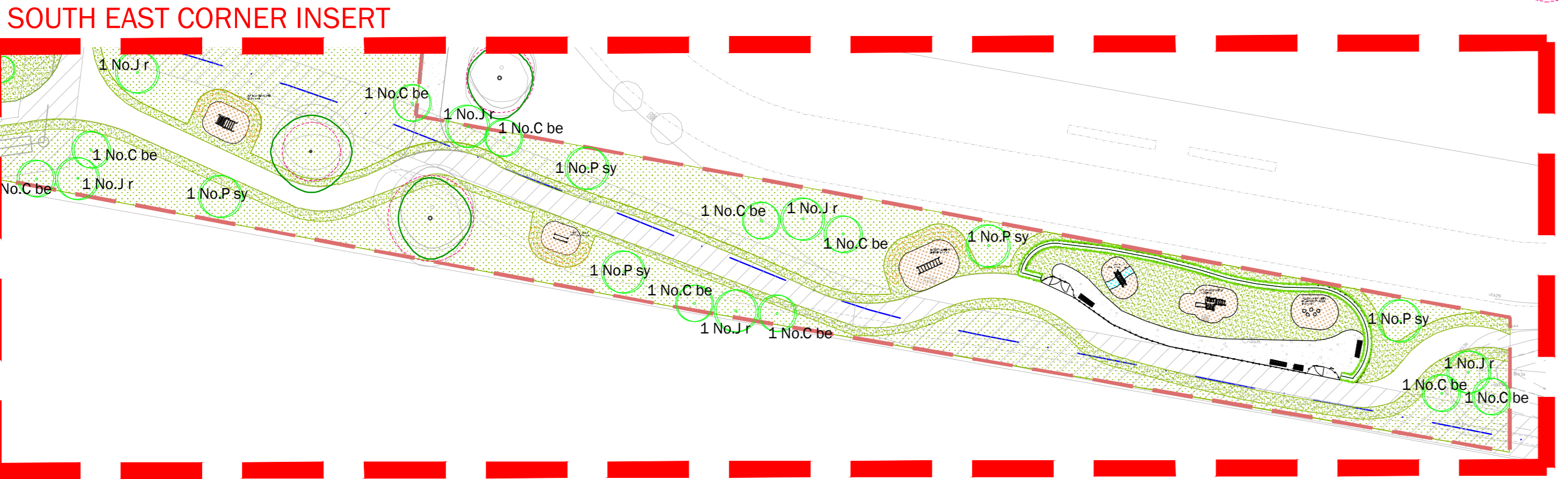
Number	Abbreviation	Plant Name	Height	Girth	Specification
9-	A ca	Acer campestre	500-550cm	20-25cm	Semi-Mature: 3x; RB: Clear Stem min. 200cm
36-	A ca 'S'	Acer campestre 'Sorewellia'	400-450cm	18-20cm	Extra Heavy Standard: 3x; RB: Clear Stem min. 200cm
12-	A psi	Acer pseudoplatanus	550-600cm	25-30cm	Semi-Mature: 4x; RB: Clear Stem min. 200cm
9-	A col	Alnus cordata	400-450cm	14-16cm	Extra Heavy Standard: C; Clear Stem min. 200cm
6-	A gl	Alnus glutinosa	400-450cm	14-16cm	Large Feathered: 7 brks; 3x; RB
9-	A g T	Alnus glutinosa 'Imperiali'	400-450cm	14-16cm	Extra Heavy Standard: 3x; RB: Clear Stem min. 200cm
55-	A x g R H	Amelanchier x grandiflora 'Robin Hill'	450-475cm	14-16cm	Extra Heavy Standard: 3x; RB: Clear Stem min. 200cm
25-	B ni	Betula nigra	450-500cm	18-20cm	Extra Heavy Standard: 3x; RB: Clear Stem min. 200cm
38-	C be	Carpinus betulus	350-425cm	20-25cm	4x; Large Feathered: RB
22-	C be 'F'	Carpinus betulus 'Trans Fontaine'	450-500cm	18-20cm	Extra Heavy Standard: 3x; RB: Clear Stem min. 200cm
5-	C be 'F'	Carpinus betulus 'Trans Fontaine'	450-600cm	25-30cm	Semi-Mature: 4x; RB: Clear Stem min. 200cm
23-	J r	Juglans regia	600-650cm	30-35cm	Semi-Mature: 4x; RB: Clear Stem min. 200cm
60-	T co 'G'	Tilia cordata 'Greenspire'	550-600cm	25-30cm	Semi-Mature: 4x; RB: Clear Stem min. 200cm
1-	T co 'G'	Tilia cordata 'Greenspire'	600-650cm	30-35cm	Semi-Mature: 4x; RB: Clear Stem min. 200cm

Total: 310

**CONFERS**

Number	Plant Name	Height	Specification	Density	Abbreviated Text
16-	Pinus sylvestris	300-350cm	Leader with Laterals: 5x; RB: Clear Stem min. 200cm	Counted	P sy

Total: 16

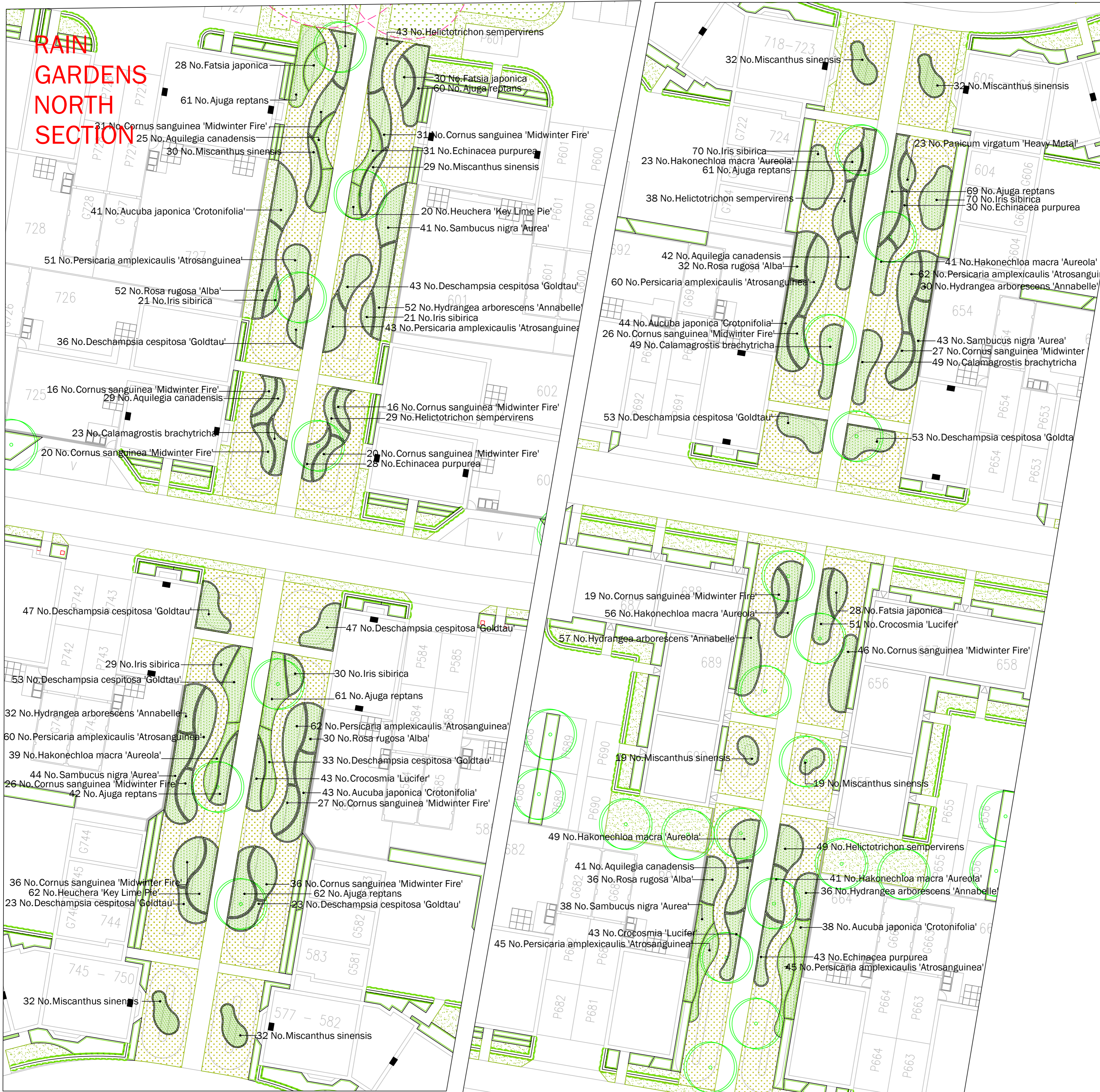


FOR CONTINUATION REFER TO INSERT

Rev	Date	Description
A	11.11.16	Tree No. reduced following comments
B	23.01.18	Tree planting amendments following updated layout.
C	09.02.18	Tree planting amendments following tree removal
D	01.03.18	Tree planting amendments following layout amendments
E	30.04.18	Plot number amendments
F	07.09.18	Road, Attenuation & Planning adjustments
G	15.04.19	Site layout altered, proposals adjusted to site conditions
H	31.07.19	Adjustments due to easements
I	26.11.20	Adjustments to basin & trees
J	27.11.20	Adjustments Planning around basin

Title: Detailed Tree Planting Proposal  
 Project: [Redacted]  
 Client: [Redacted]  
 Date: 15.04.19  
 Scale: 1:500 @ A0  
 Drawing No: 1619 A6 03 J  
 Rev: [Redacted]

# RAIN GARDENS NORTH SECTION



**LEGEND**

- Existing Vegetation to be retained
- Proposed Trees
- Native Hedgerow
- Hedging
- Shrub/herbaceous planting
- Aquatic/marginal planting
- Grass: Meadow (EM1 - Basic general purpose meadow mixture by Emorsgate seeds or similar approved)
- Grass:Mown
- Grass: Wetland (EG8 - Meadow grass mixture for wetlands by Emorsgate seeds or similar approved)

**GENERAL NOTES**

This drawing is to be used for planting information only, and is subject to alteration through changes to the site layout or until approved by the area designer.

Any species substitution by the contractor must be verified with the Landscape Architect through the Job Architect.

This layout must be checked in accordance with NHBC Standards 2013 (Chapter 4.2 - Building Near Trees & Chapter 9.2 Drives, Paths and Landscaping) by the Regional Engineer prior to implementation.

Excavations: Contractors must ensure that they have full information relating to service and drainage positions before undertaking any excavations.

Root barriers to be used in association with tree planting adjacent to kerbs / services / footpaths etc. (Greenleaf ReRoot products or similar application, in accordance with manufacturer's instructions).

**NOTES:**  
Please note all planting mixes should be planted as follows:  
Shrubs/Grasses to be planted in groups of 3-5 with herbaceous to be planted randomly throughout mix area.

For Landscape Specification refer to drawing 1619 A6 17

For Tree Specification refer to drawing 1619 A6 03

## RAIN GARDEN PLANTING SCHEDULE

### SHRUBS

Number	Plant Name	Height	Container	Specification	Density
190 No.	<i>Aucuba japonica</i> 'Crotonifolia'	40-60cm	5L	Bushy: 3 brks: C	4/m <sup>2</sup>
556 No.	<i>Cornus sanguinea</i> 'Midwinter Fire'	60-80cm	5L	Branched: 4 brks: C	4/m <sup>2</sup>
163 No.	<i>Fatsia japonica</i>	30-40cm	3L	Leader: C	5/m <sup>2</sup>
207 No.	<i>Hydrangea arborescens</i> 'Annabelle'	40-60cm	3L	Branched: 3 brks: C	5/m <sup>2</sup>
217 No.	<i>Rosa rugosa</i> 'Alba'	40-60cm	3L	Branched: 3 brks: C	5/m <sup>2</sup>
128 No.	<i>Sambucus nigra</i> 'Aurea'	40-60cm	3L	Branched: 3 brks: C	4/m <sup>2</sup>

Total: 1461 No.

### HERBACEOUS

Number	Plant Name	Container	Specification	Density
294 No.	<i>Ajuga reptans</i>	2L	Full Pot: C	6/m <sup>2</sup>
112 No.	<i>Aquilegia canadensis</i>	2L	Full Pot: C	6/m <sup>2</sup>
146 No.	<i>Echinacea purpurea</i>	2L	Full Pot: C	6/m <sup>2</sup>
102 No.	<i>Heuchera</i> 'Key Lime Pie'	2L	Full Pot: C	6/m <sup>2</sup>
567 No.	<i>Iris sibirica</i>	2L	Full Pot: C	6/m <sup>2</sup>
432 No.	<i>Persicaria amplexicaulis</i> 'Atrounguea'	2L	Full Pot: C	6/m <sup>2</sup>
23 No.	<i>Rudbeckia subtomentosa</i> 'Henry Eilers'	2L	Full pot: C	6/m <sup>2</sup>

Total: 1676 No.

### BULBS

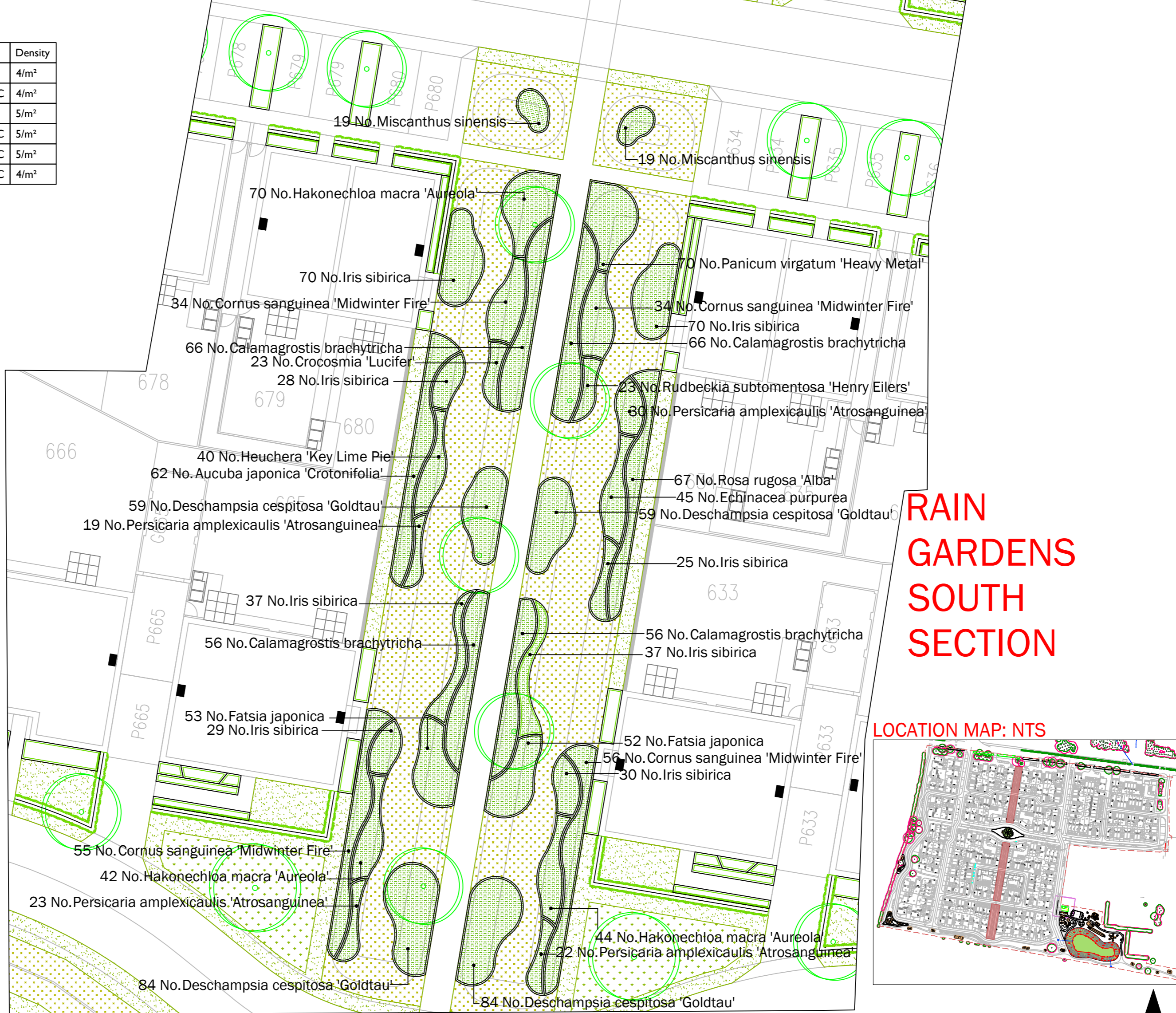
Number	Plant Name	Pot Size	Specification	Density
160 No.	<i>Crocsmia</i> 'Lucifer'	1.5-2L	Full Pot: C	6/m <sup>2</sup>

Total: 160 No.

### GRASSES

Number	Plant Name	Container	Specification	Density
365 No.	<i>Calamagrostis brachytricha</i>	2L	Full Pot: C	5/m <sup>2</sup>
611 No.	<i>Deschampsia cespitosa</i> 'Goldtau'	2L	Full Pot: C	5/m <sup>2</sup>
366 No.	<i>Hakonechloa macro</i> 'Aureola'	2L	Full Pot: C	6/m <sup>2</sup>
159 No.	<i>Helictotrichon sempervirens</i>	2L	Full Pot: C	6/m <sup>2</sup>
225 No.	<i>Miscanthus sinensis</i>	2L	Full Pot: C	5/m <sup>2</sup>
136 No.	<i>Panicum virgatum</i> 'Heavy Metal'	2L	Full Pot: C	6/m <sup>2</sup>

Total: 1862 No.



# RAIN GARDENS SOUTH SECTION

## LOCATION MAP: NTS



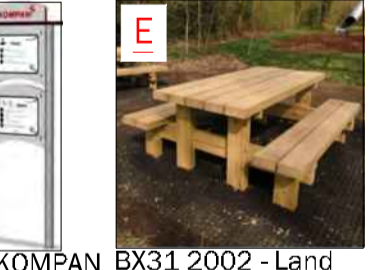
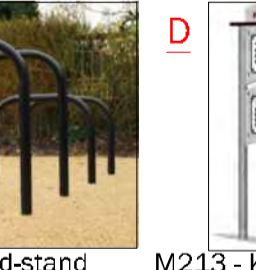
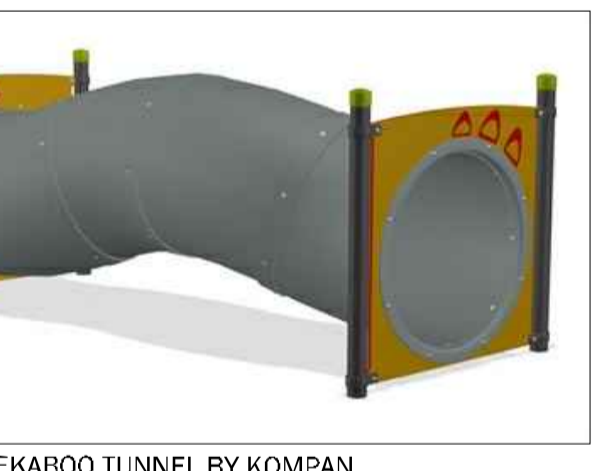
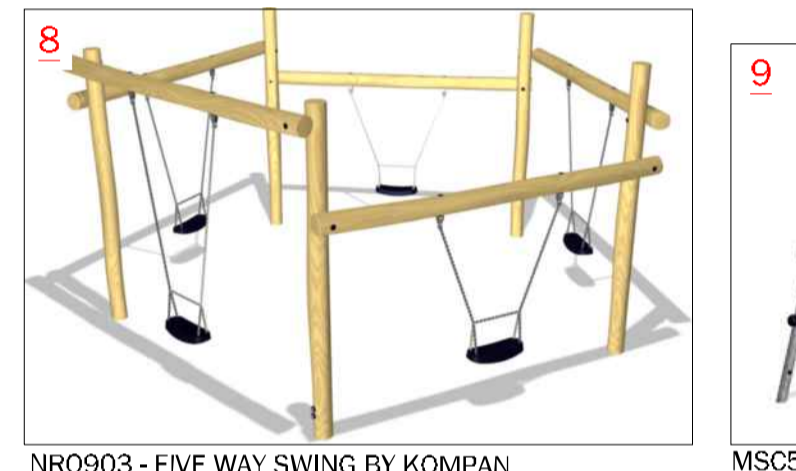
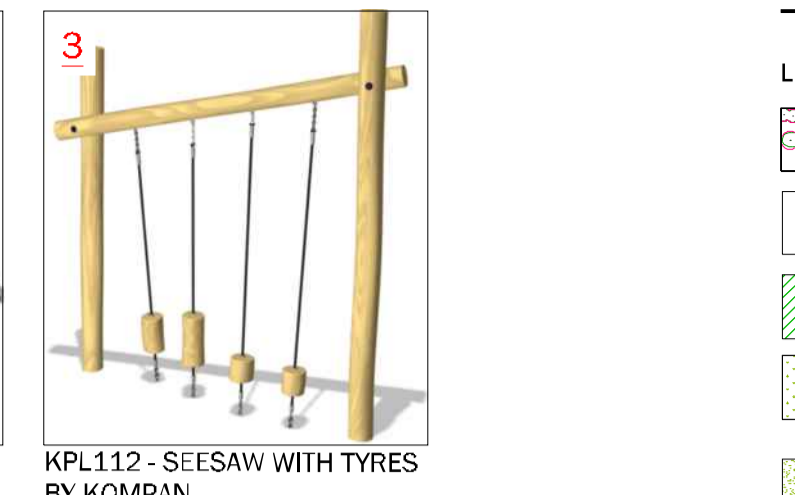
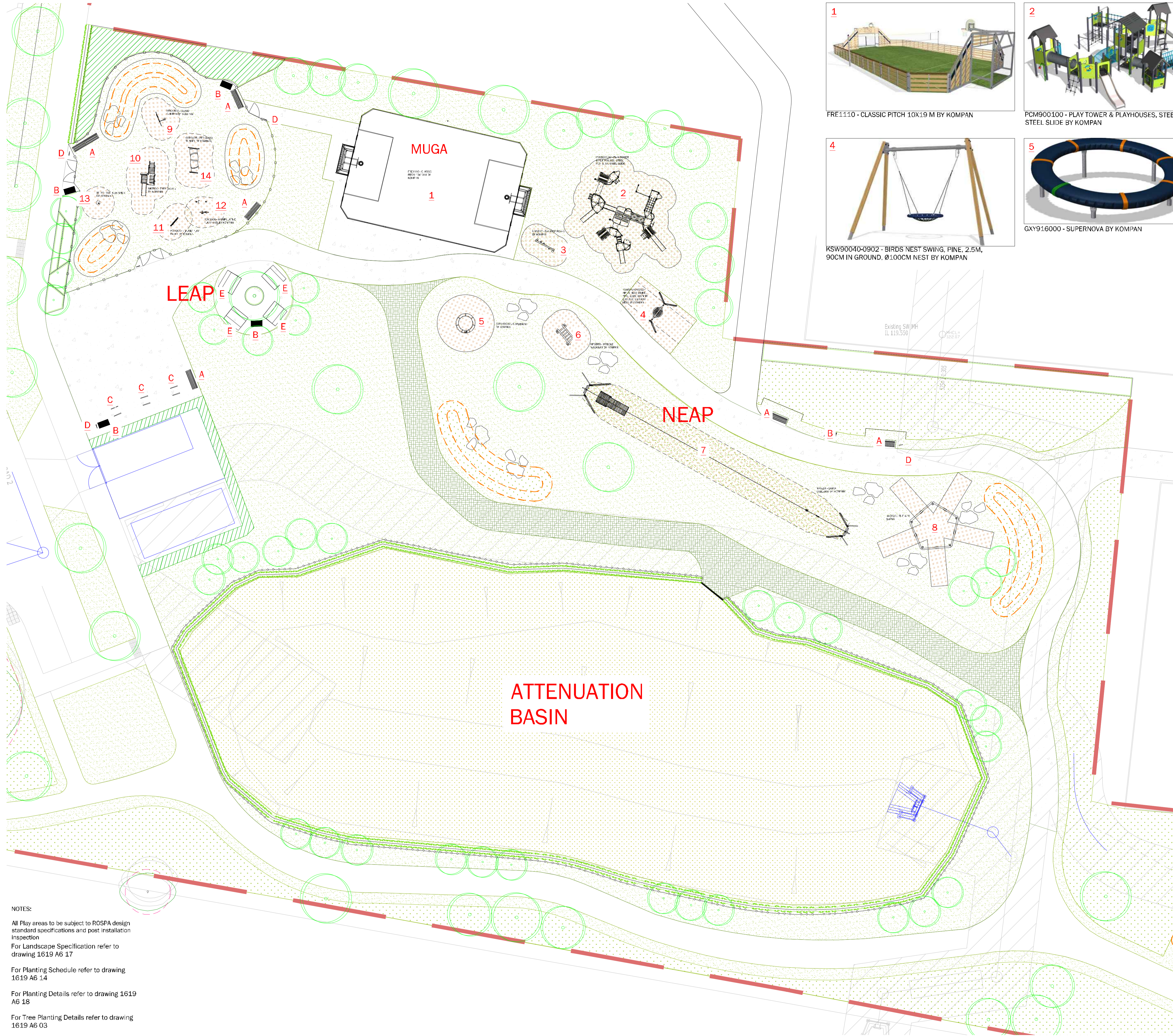
Rev	Date	Description
A	11.11.16	Tree No. reduced following comments
B	23.01.18	Tree No. reduced following comments
C	30.04.18	Plot number amendments
D	07.09.18	Planting Adjustments
E	15.04.19	Site layout altered, proposals adjusted to coordinate

Title: Rain Gardens North Section Proposal  
 Project: Park Park, Bicester - Phase 9  
 Client: Bicester Living  
 Date: October 16  
 Scale: 1:200 @ A1  
 Drawing No: 1619 A6 04 E  
 Rev: 1

T: +44 (0)1295 647044 E: office@lize.co.uk www.lize.co.uk

**LIZ LAKE ASSOCIATES**  
 LANDSCAPE ARCHITECTS

Copyright © Liz Lake Associates  
 Information contained in this drawing is confidential and may not be used for any purpose other than that for which the drawing is supplied without prior written authority of Liz Lake Associates.  
 This drawing is copyright and may not be copied, stored, or reproduced in any form without the prior written consent of Liz Lake Associates.  
 BEST PRACTICE: Information contained in this drawing is based on the information provided to Liz Lake Associates by the client. Liz Lake Associates does not accept liability for any errors or omissions in the drawing or for any consequences arising from the use of the drawing.



- LEGEND**
- Existing Vegetation to be retained
  - Proposed Trees
  - Native Hedgerow
  - Grass: Meadow (EM1 - Basic general purpose meadow mixture by Emorsgate seeds or similar approved)
  - Grass:Mown
  - BodPave 40 - Interlocking Permeable Paving Grid
  - Grass: Wetland (EG8 - Meadow grass mixture for wetlands by Emorsgate seeds or similar approved)
  - Rubber Eco Mulch surfacing in various colours
  - Hoggin footpath
  - Low Mounding
  - Natural play boulders
  - Bowtop fencing and self closing gate
  - Timber knee rail and access gate
  - Adoptable & Private Drainage

**NOTES:**

All Play areas to be subject to ROSPA design standard specifications and post installation inspection

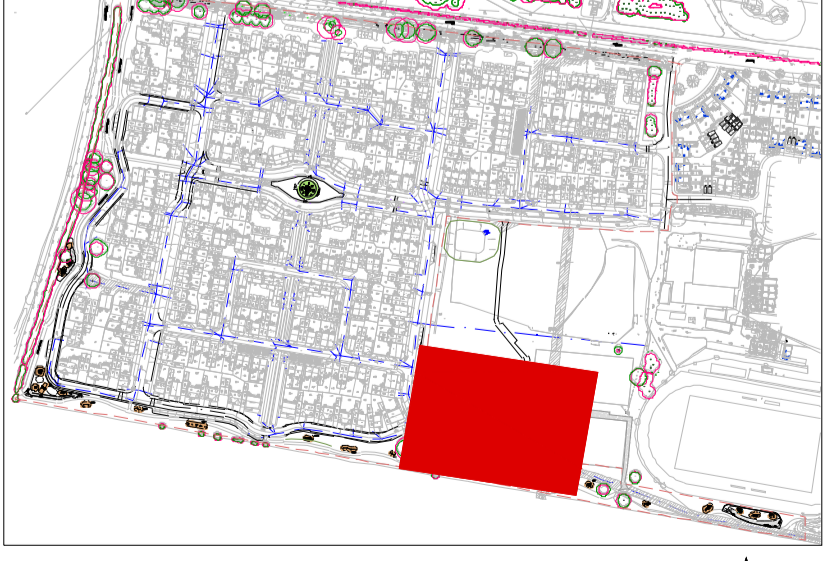
For Landscape Specification refer to drawing 1619 A6 17

For Planting Schedule refer to drawing 1619 A6 14

For Planting Details refer to drawing 1619 A6 18

For Tree Planting Details refer to drawing 1619 A6 03

**LOCATION MAP: NTS**



Rev	Date	Description
C	07.09.18	Footpath, Attenuation & Planting Adjustments
D	15.04.19	Site layout altered, proposals adjusted to coordinate
E	31.07.19	Adjustments due to easements
F	28.08.19	Maintenance Access Adjustment
G	12.11.19	Adjustments to Boundary Footpath
H	26.11.20	Adjustments to Basin
I	27.11.20	Adjustments Planting around basin

Title: Eastern POS Detailed Proposal

Project: HAYFIELD COLLEGE - Phase 9

Client: HAYFIELD COLLEGE

Date: 16/11/20

Scale: 1:200 @ A1

Drawing No: 1619 A6 05 I

Rev: 1

**LIZ LAKE ASSOCIATES**  
LANDSCAPE ARCHITECTS