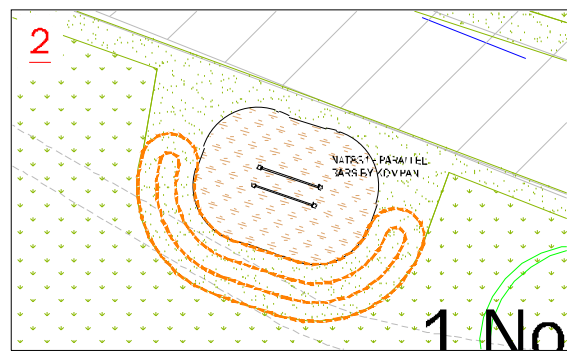
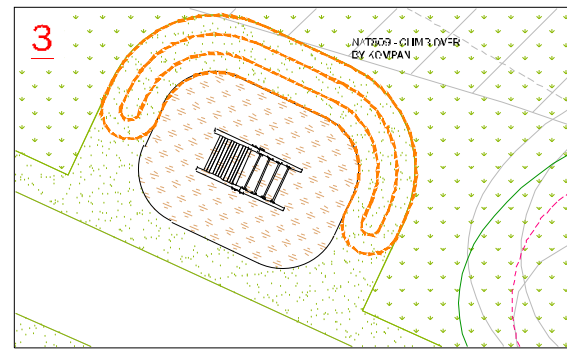


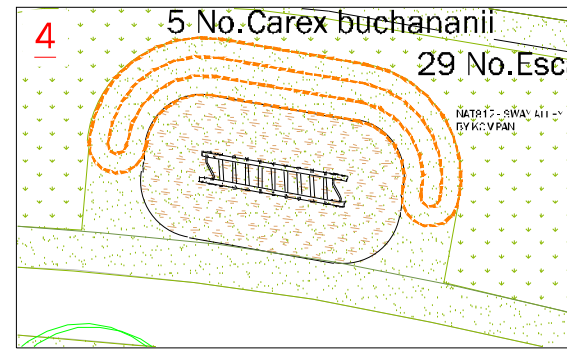
NAT807 - OVERHEAD BARS BY KOMPAN



NAT831 - PARALLEL BARS BY KOMPAN



NAT809 - CLIMB OVER BY KOMPAN



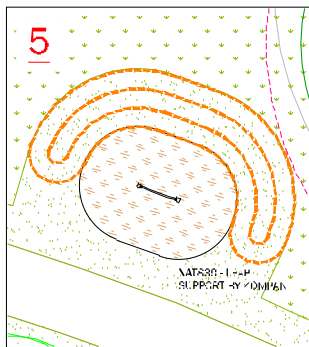
NAT812 - SWAY ALLEY BY KOMPAN

LEGEND

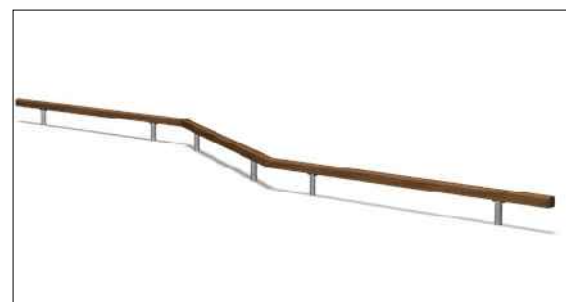
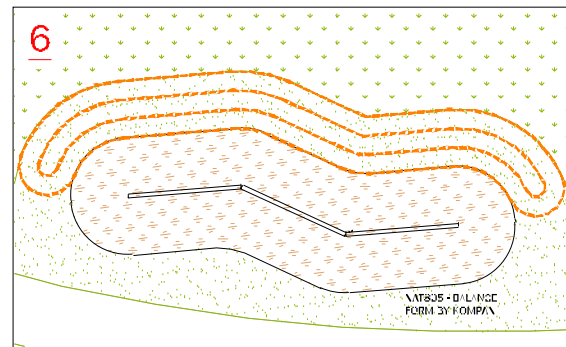
- Proposed Trees
- Grass: Meadow (EM1 – Basic general purpose meadow mixture by Emorsgate seeds or similar approved)
- Grass:Mown
- Rubber Eco Mulch surfacing in various colours
- Low Mounding

NOTES:

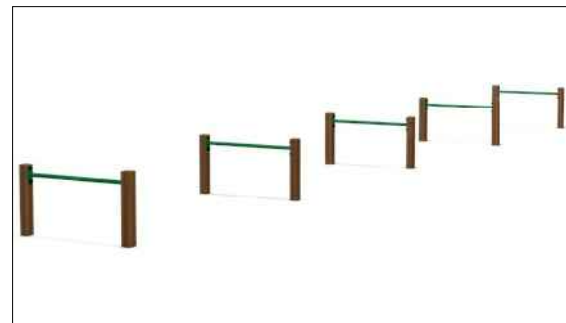
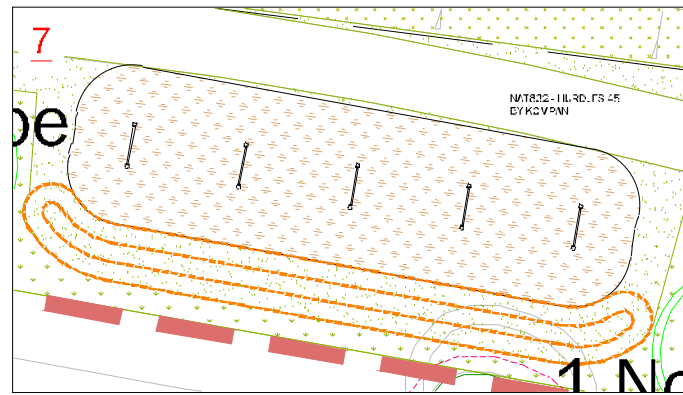
All Play areas to be subject to ROSPA design standard specifications and post installation inspection



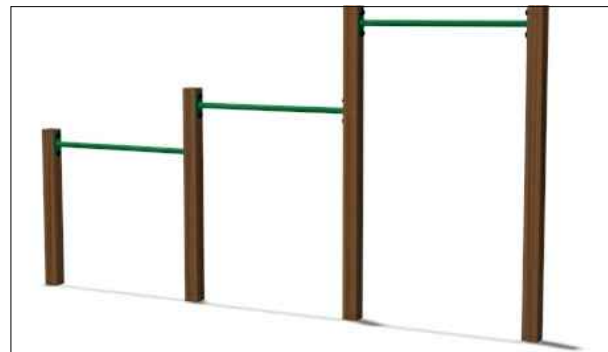
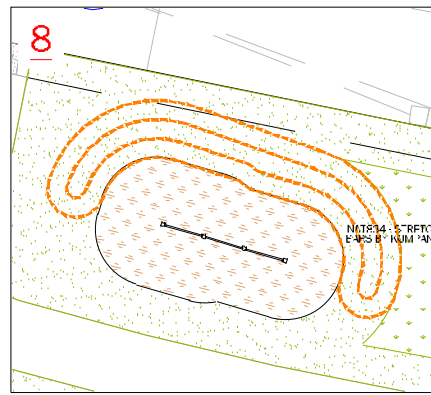
NAT839 - LEAP SUPPORT BY KOMPAN



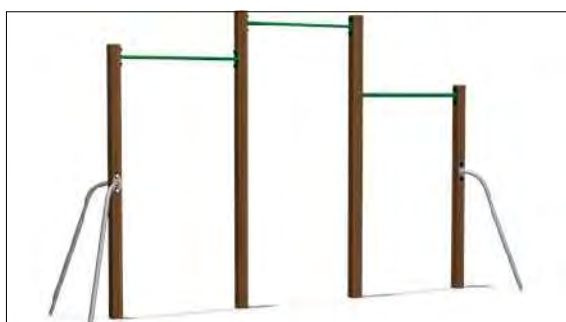
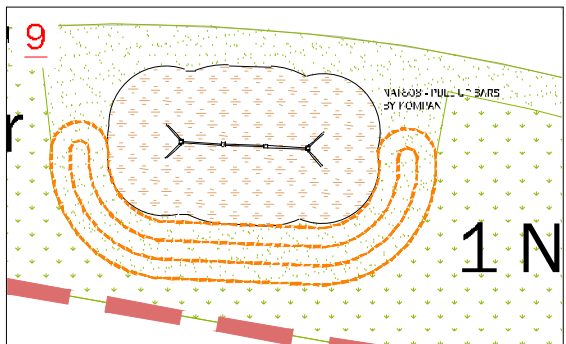
NAT805 - BALANCE FORM BY KOMPAN



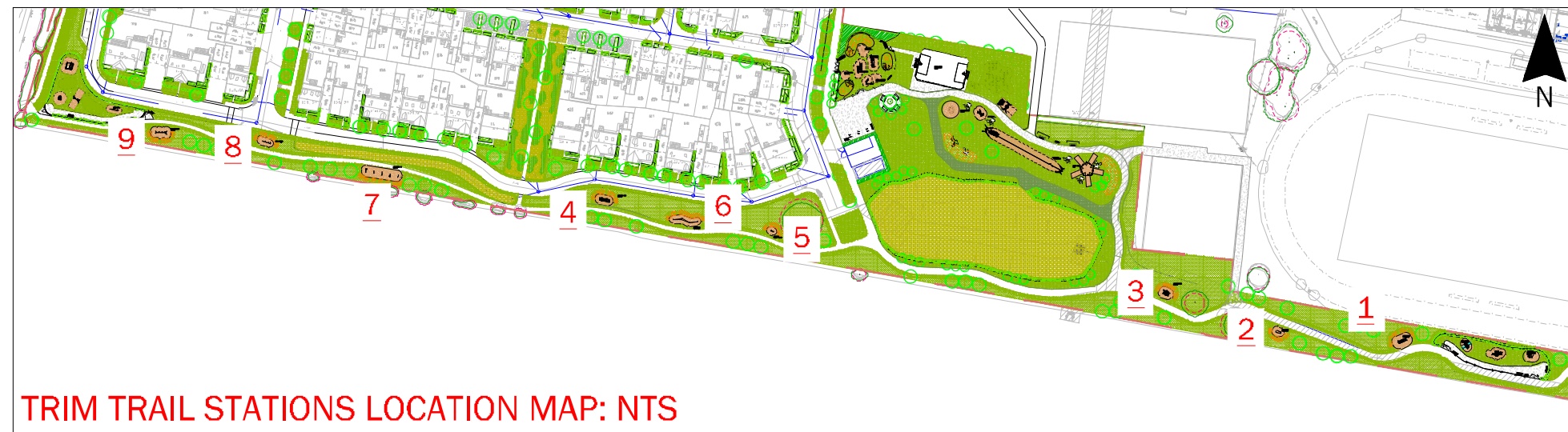
NAT832 - HURDLES 45 BY KOMPAN



NAT834 - STRETCHING BARS BY KOMPAN



NAT808 - PULL UP BARS BY KOMPAN



TRIM TRAIL STATIONS LOCATION MAP: NTS

Rev	Date	Description
A	11.11.16	Tree No. reduced following comments
B	15.01.18	Layout alterations following architectural layout amendments
C	07.09.18	Layout alterations following architectural layout amendments
D	15.04.19	Site layout altered, proposals adjusted to coordinate
E	31.07.19	Adjustments due to easement
F	27.11.20	Relocation of Item 4

Title: Trim Trail Proposal
 Project: Heyford Park, Bicester parcel 9
 Client: Donchester Living
 Date: October 16
 Scale: 1:200@ A3
 Drawing No: 1619 A6 06 F
 Rev:


T: +44 (0)1279 647044 E: office@lizlake.com www.lizlake.com

COPYRIGHT Liz Lake Associates
 If further consulted in this drawing is confidential and may not be used for any purpose other than that for which the drawing is prepared without the prior written consent of Liz Lake Associates. This drawing is copyright and is not to be copied or reproduced without the prior written consent of Liz Lake Associates.

BASF MAPPING:
 Reproduced from Ordnance Survey map data by permission of Ordnance Survey © Crown copyright 2014. Licence No. 1000227196.
 © Crown copyright and database right 2014. Ordnance Survey Licence No. 0100021873.
 This drawing may contain information and/or mapping from a number of sources and its accuracy should be verified on site.

LIZ LAKE ASSOCIATES
 LANDSCAPE ARCHITECTS

LEGEND

-  Proposed Trees
-  Hedging
-  Grass: Meadow (EM1 - Basic general purpose meadow mixture by Emorsgate seeds or similar approved)
-  Grass:Mown
-  Hoggin footpath
-  Rubber Eco Mulch surfacing in various colours
-  Bowtop fencing and self closing gate

NOTES:

- All Play areas to be subject to ROSPA design standard specifications and post installation inspection
- For Landscape Specification refer to drawing 1619 A6 17
- For Planting Schedule refer to drawing 1619 A6 14
- For Planting Details refer to drawing 1619 A6 18
- For Tree Planting Details refer to drawing 1619 A6 03



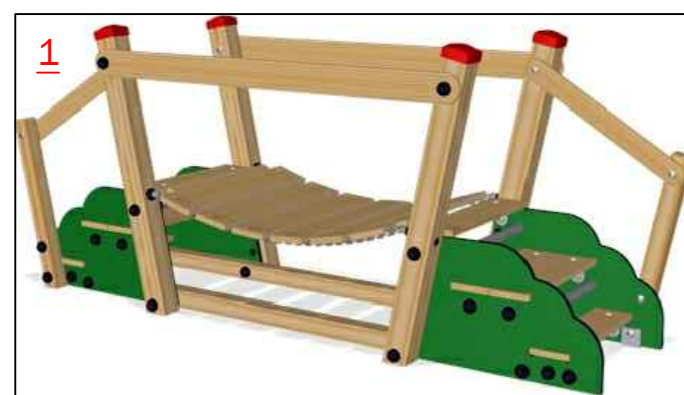
FalcoRelax Seating



BX45 2552-DD-RC - Derby Double Wheelie Bin



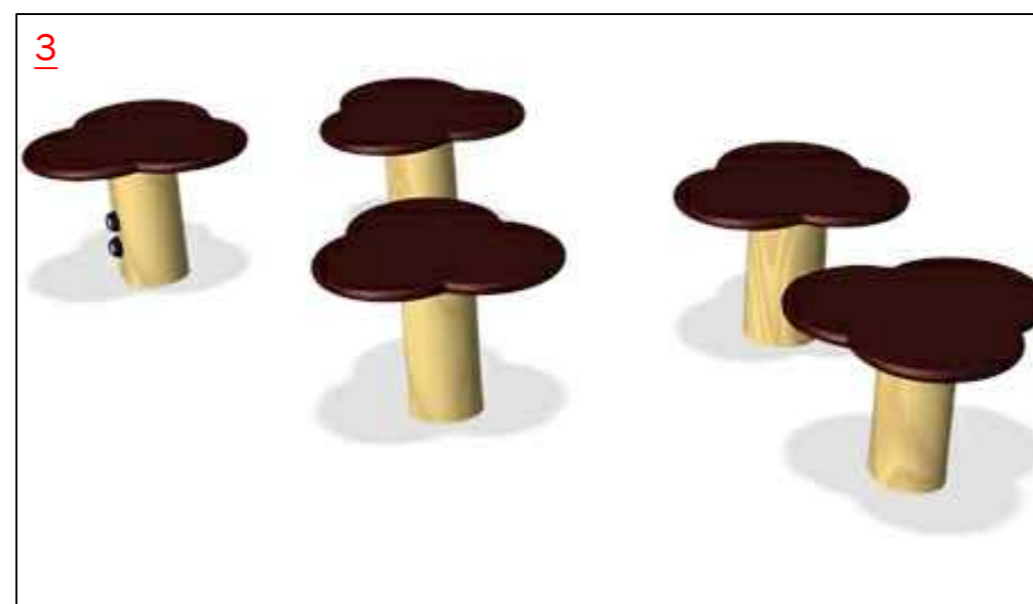
M213 - KOMPAN Sign for 3 descriptions



M633 - XPLORER'S BRIDGE BY KOMPAN



NT506 - TREE CASTLE BY KOMPAN



NR0820 - WATERLILIES BALANCE POST - 5 PCS BY KOMPAN

LOCATION MAP: NTS

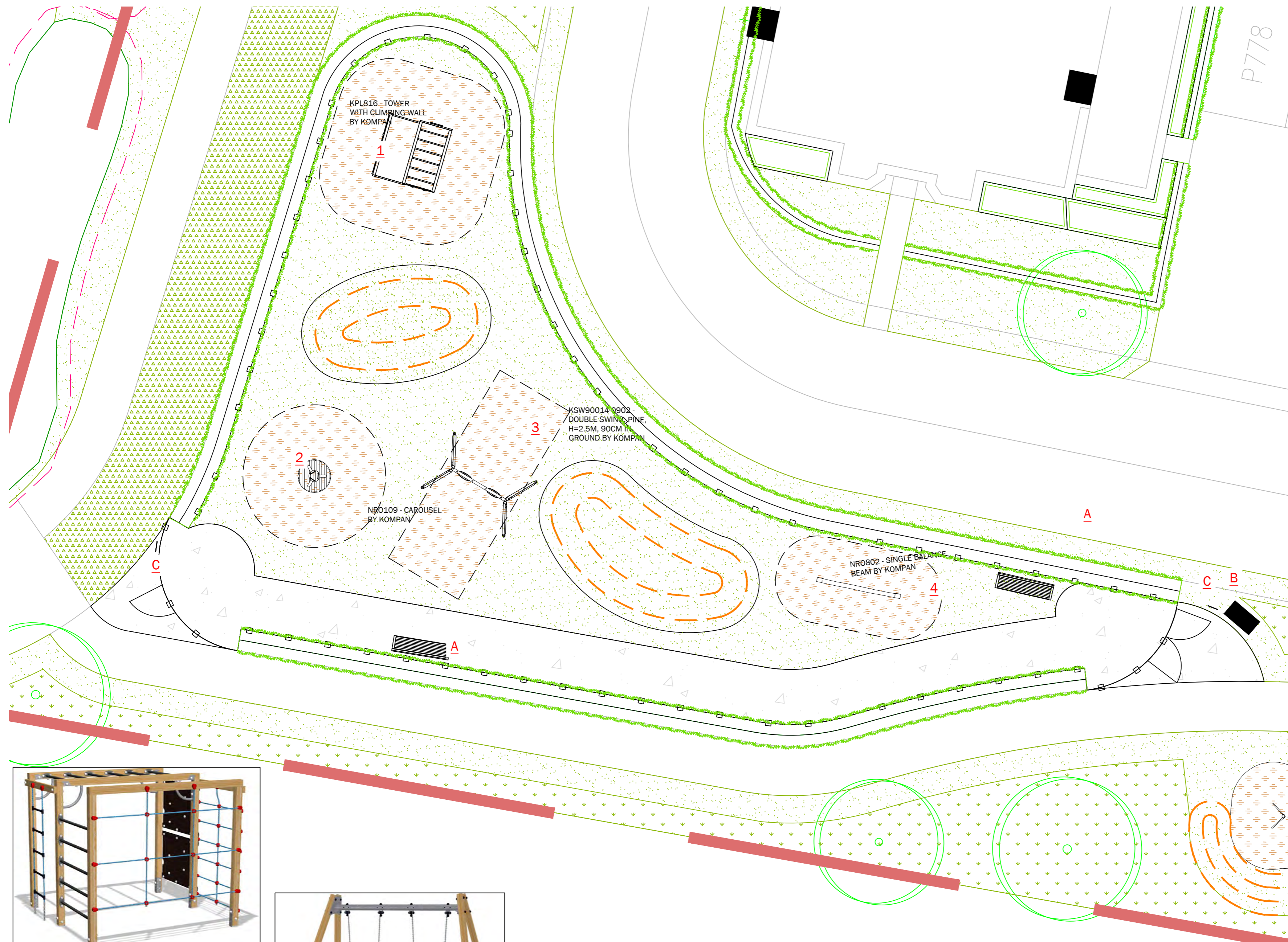


Rev	Date	Description
A	11.11.16	Tree No. reduced following comments
B	15.01.18	Layout alterations following architectural layout amendments
C	07.09.18	Arrangement adjustment
D	15.04.19	Site layout altered, proposals adjusted to coordinate
E	31.07.19	Adjustment due to easements

Title: South Eastern LAP Proposal
 Project: Heald Park, Chester - Phase 9
 Client: Chester Living
 Date: October 16
 Scale: 1:100@ A2
 Drawing No: 1619 A6 07 E
 Rev:

T: +44 (0)1279 647044 E: office@lizlake.com www.lizlake.com
 COPYRIGHT Liz Lake Associates
 Information contained in this drawing is confidential and may not be used for any purpose other than that for which the drawing is supplied without prior written authority of Liz Lake Associates. This drawing is copyright and may not be copied except within the agreed conditions of supply.
 BASE MAPPING: Reproduced from Ordnance Survey map data by permission of Ordnance Survey © Crown copyright 2014. Licence No. 100007196. © Crown copyright and database rights 2014. Ordnance Survey Licence No. 0100031673. This drawing may contain information and/or mapping from a number of sources and its accuracy should be verified on site.
LIZ LAKE ASSOCIATES
 LANDSCAPE ARCHITECTS





LEGEND

- Existing Vegetation to be retained
- Proposed Trees
- Hedging
- Grass: Meadow (EM1 - Basic general purpose meadow mixture by Emorsgate seeds or similar approved)
- Grass:Mown
- Grass: Wetland (EG8 - Meadow grass mixture for wetlands by Emorsgate seeds or similar approved)
- Grass Mounding
- Hoggin Footpath
- 1.5m Bowtop fencing and self closing gate

NOTES:

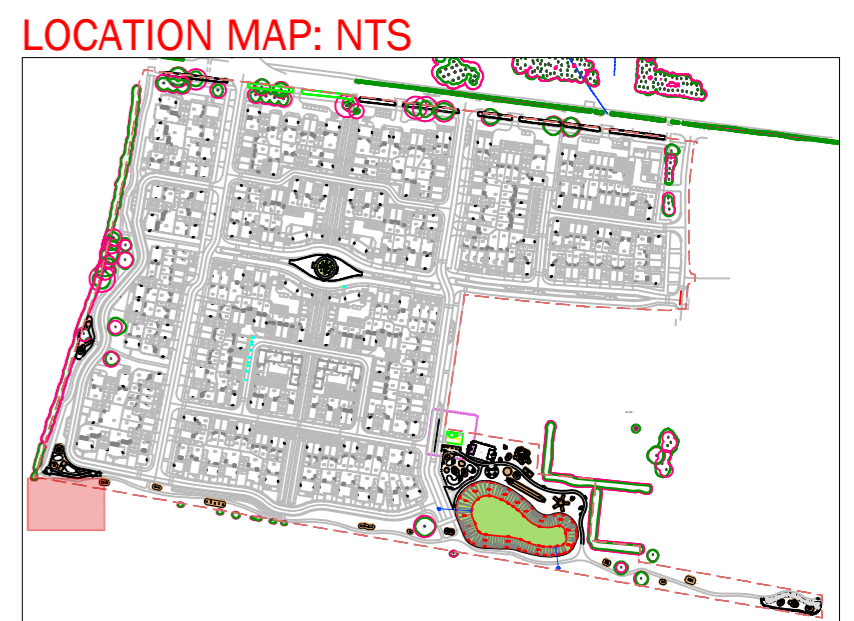
All Play areas to be subject to ROSPA design standard specifications and post installation inspection

For Landscape Specification refer to drawing 1619 A6 17

For Planting Schedule refer to drawing 1619 A6 14

For Planting Details refer to drawing 1619 A6 15

For Tree Planting Details refer to drawing 1619 A6 03



Rev	Date	Description
A	11.11.16	Tree No. reduced following comments
B	15.01.18	Layout alterations following architectural layout amendments
C	30.04.18	Plot number amendments
D	07.09.18	Gate & material adjustments
E	15.04.19	Site layout altered, proposals adjusted to coordinate

Title: South Western LEAP Proposal

Project: Heyford Park, Leicester - Phase 9

Client: Quinchester Living

Date: October 16

Scale: 1:100@ A2

Drawing No: 1619 A6 08 E

Rev:

T: +44 (0)1279 647044 E: office@lizlake.com www.lizlake.com

Copyright Liz Lake Associates
Information contained in this drawing is confidential and may not be used for any purpose other than that for which the drawing is supplied without prior written authority of Liz Lake Associates. This drawing is copyright and may not be copied except within the agreed conditions of supply.

BASE MAPPING:
Reproduced from Ordnance Survey map data by permission of Ordnance Survey © Crown copyright 2014. Licence No. 100007196.
© Crown copyright and database rights 2014 Ordnance Survey Licence No. 0100031673.
This drawing may contain information and/or mapping from a number of sources and its accuracy should be verified on site.

LIZ LAKE ASSOCIATES
LANDSCAPE ARCHITECTS



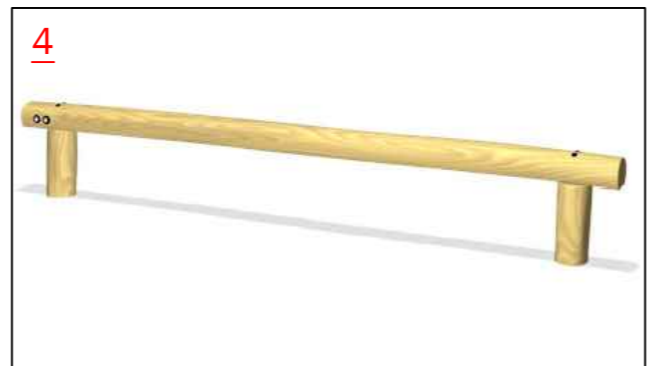
KPL816 - TOWER WITH CLIMBING WALL BY KOMPAN



NRO109 - CAROUSEL BY KOMPAN



KSW90014-0902 - DOUBLE SWING, PINE, H=2.5M, 90CM IN GROUND BY KOMPAN



NRO802 - SINGLE BALANCE BEAM BY KOMPAN



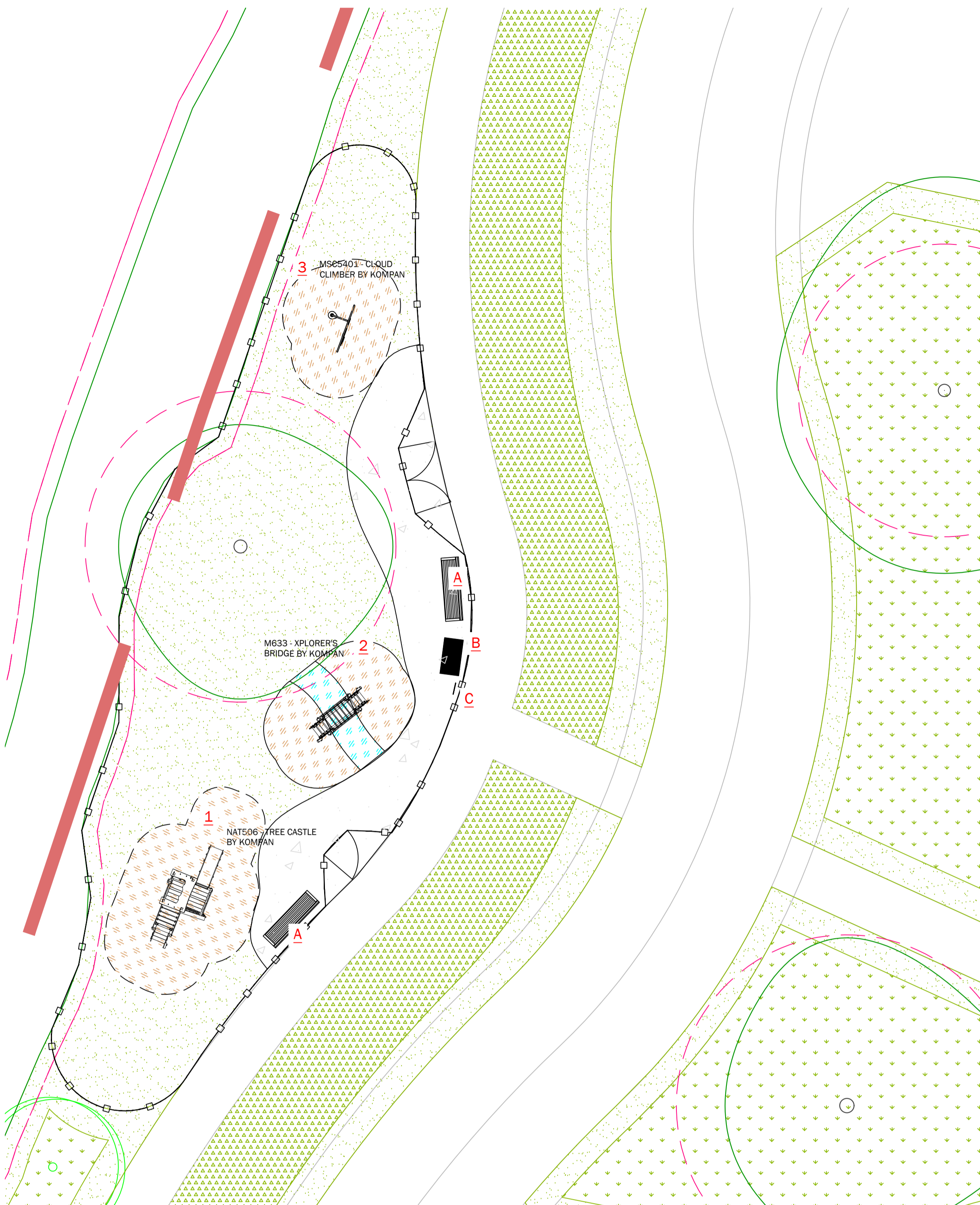
BX14 4015 - Willenhall seat



BX45 2552-DD-RC - Derby Double Wheelie Bin



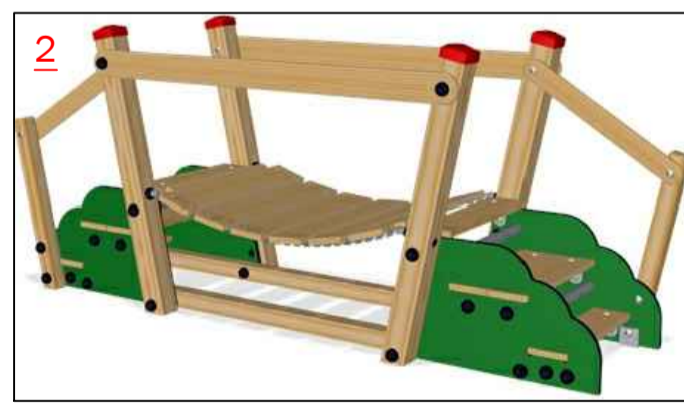
M213 - KOMPAN Sign for 3 descriptions



- LEGEND**
- Existing Vegetation to be retained
 - Proposed Trees
 - Grass: Meadow (EM1 - Basic general purpose meadow mixture by Emorsgate seeds or similar approved)
 - Grass:Mown
 - Hoggin Footpath
 - Rubber Eco Mulch surfacing in various colours
 - Bowtop fencing and self closing gate
- NOTES:**
- ✓ All Play areas to be subject to ROSPA design standard specifications and post installation inspection
 - ✓ For Landscape Specification refer to drawing 1619 A6 17
 - ✓ For Planting Schedule refer to drawing 1619 A6 14
 - ✓ For Planting Details refer to drawing 1619 A6 15



NAT506 - TREE CASTLE BY KOMPAN



GSP0005 - PEEKABOO TUNNEL BY KOMPAN



MSC5401 - CLOUD CLIMBER BY KOMPAN



BX14 4015 - Willenhall seat



BX45 2552-DD-RC - Derby Double Wheelie Bin



M213 - KOMPAN Sign for 3 descriptions

LOCATION MAP: NTS



Rev	Date	Description
A	11.11.16	Tree No. reduced following comments
B	15.01.18	Layout alterations following architectural layout amendments
C	07.09.18	Arrangement Adjustments
D	15.04.19	Site layout altered, proposals adjusted to coordinate

Title: Western LAP 2 Proposal

Project: Hovord Lane, Brcester - Phase 9

Client: Northcote Living

Date: October 16

Scale: 1:100@ A2

Drawing No: 1619 A6 09 D

Rev:

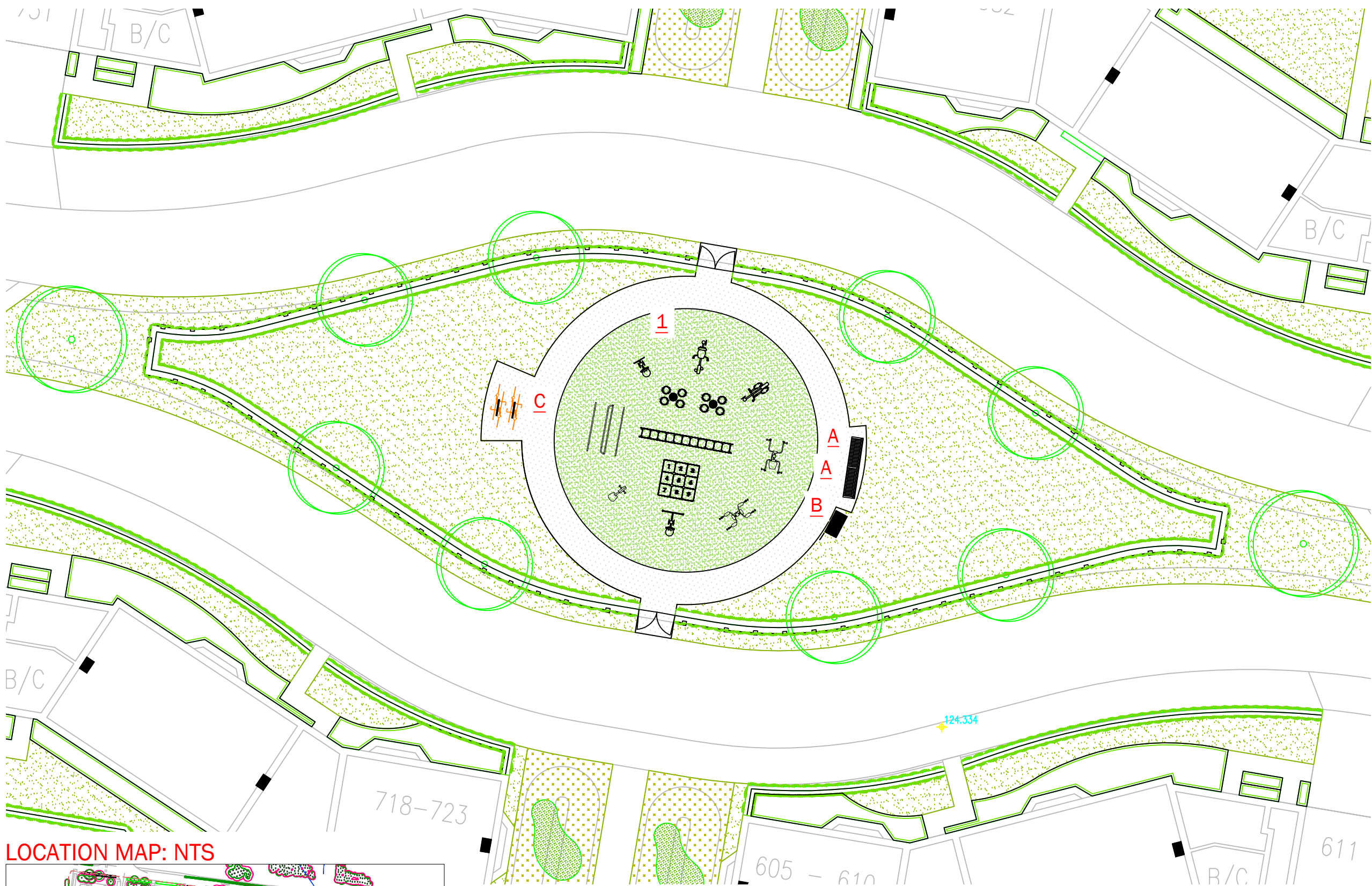
T: +44 (0)1279 647044 E: office@lizlake.com www.lizlake.com

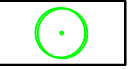
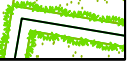






COPYRIGHT Liz Lake Associates
Information contained in this drawing is confidential and may not be used for any purpose other than that for which the drawing is supplied without prior written authority of Liz Lake Associates. This drawing is copyright and may not be copied except within the agreed conditions of supply.

BASE MAPPING:
Reproduced from Ordnance Survey map data by permission of Ordnance Survey © Crown copyright 2014. Licence No. 100007196.
© Crown copyright and database right 2014
Ordnance Survey Licence No. 0100031673.
This drawing may contain information and/or mapping from a number of sources and its accuracy should be verified on site.

LIZ LAKE ASSOCIATES
LANDSCAPE ARCHITECTS





- LEGEND**
-  Proposed Trees
 -  Hedging
 -  Grass: Meadow (EM1 - Basic general purpose meadow mixture by Emorsgate seeds or similar approved)
 -  Grass: Mown
 -  Grass: Wetland (EG8 - Meadow grass mixture for wetlands by Emorsgate seeds or similar approved)
 -  Macadam surface
 -  Wet Pour Safety Surfacing
 -  Bowtop fencing and self closing gate

For Landscape Specification refer to drawing 1619 A6 17

For Planting Schedule refer to drawing 1619 A6 14

For Planting Details refer to drawing 1619 A6 12

For Tree Planting Details refer to drawing 1619 A6 03

Rev	Date	Description
A	11.11.16	Tree No. reduced following comments
B	15.01.18	Layout alterations following architectural layout amendments
C	30.04.18	Plot number amendments
D	07.09.18	Gate & Bench adjustments
E	15.04.19	Site layout altered, proposals adjusted to coordinate

Title: Central LAP Proposal

Project: Heyford Park, Bicester - Phase 9

Client: Dorchester Living

Date: October 16

Scale: 1:200@ A3

Drawing No: 1619 A6 11 E

Rev:

T: +44 (0)1279 647044 E: office@lizlake.com www.lizlake.com

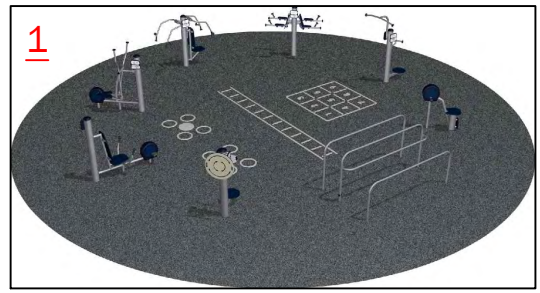
PLANNING

COPYRIGHT Liz Lake Associates
Information contained in this drawing is confidential and may not be used for any purpose other than that for which the drawing is supplied without prior written authority of Liz Lake Associates. This drawing is copyright and may not be copied except within the agreed conditions of supply.

BASE MAPPING:
Reproduced from Ordnance Survey map data by permission of Ordnance Survey © Crown copyright 2014. Licence No. 100007196.
© Crown copyright and database rights 2014
Ordnance Survey Licence No. 0100031673.
This drawing may contain information and/or mapping from a number of sources and its accuracy should be verified on site.

LIZ LAKE ASSOCIATES
LANDSCAPE ARCHITECTS

LOCATION MAP: NTS



1
FSP40200 - Circuit Training
127M² By Kompan



A
BX14 4015 - Willenhall seat

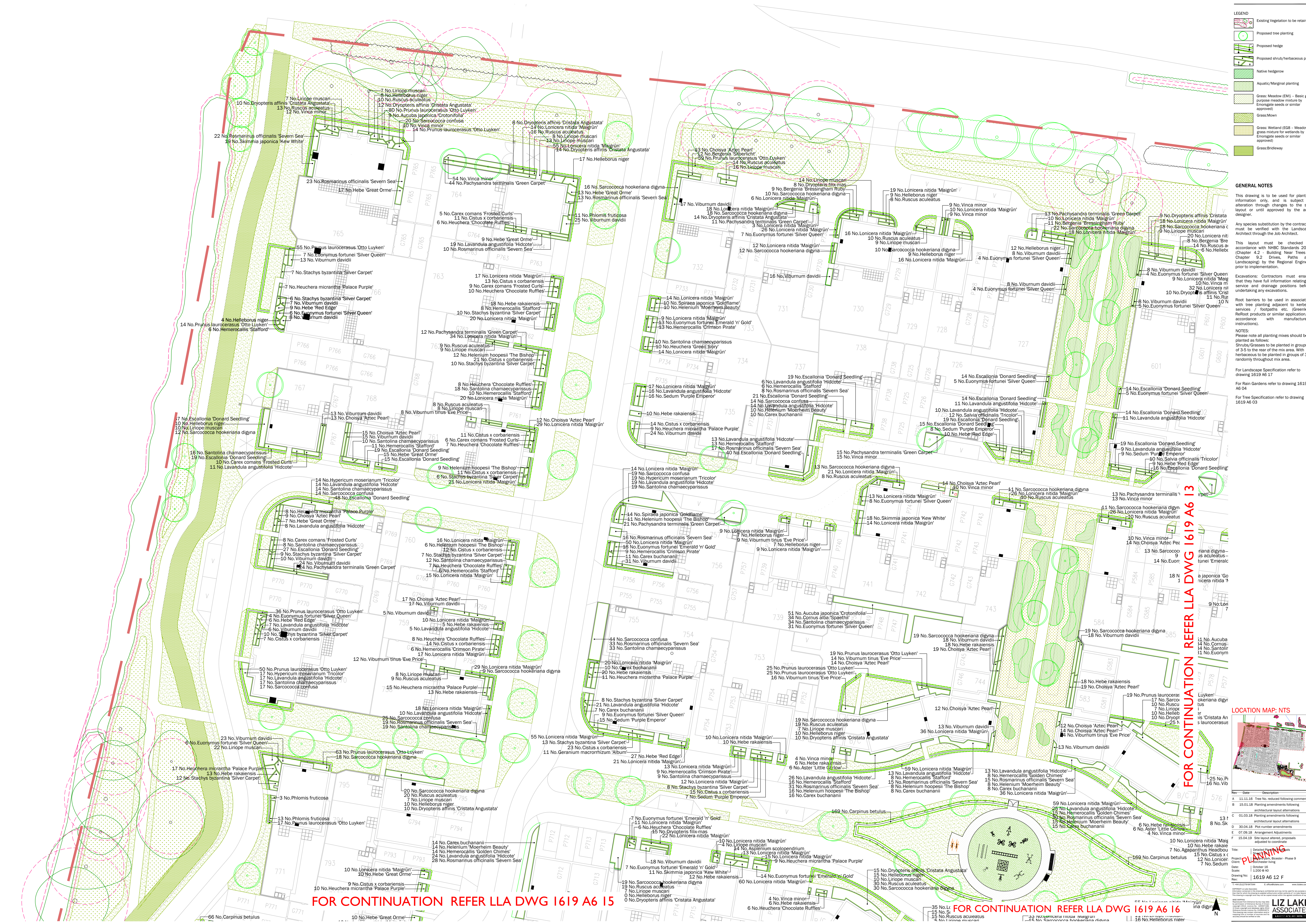


B
BX45 2552-DD-RC - Derby Double Wheelie Bin



BXMW/GS/Sheffield-stand - Sheffield Cycle Stand





LEGEND

- Existing Vegetation to be retained
- Proposed tree planting
- Proposed hedge
- Proposed shrub/herbaceous planting
- Native hedgerow
- Aquatic/Marginal planting
- Grass: Meadow (EM1 - Basic general purpose meadow mixture by Erongate seeds or similar approved)
- Grass:Mown
- Grass: Wetland (EG8 - Meadow grass mixture for wetlands by Erongate seeds or similar approved)
- Grass: Bridgeway

GENERAL NOTES

This drawing is to be used for planting information only, and is subject to alteration through changes to the site layout or until approved by the area designer.

Any species substitution by the contractor must be verified with the Landscape Architect through the Job Architect.

This layout must be checked in accordance with NHC Standards 2013 (Chapter 4.2 - Building Near Trees & Chapter 9.2 Drives, Paths and Landscaping) by the Regional Engineer prior to implementation.

Excavations: Contractors must ensure that they have full information relating to service and drainage positions before undertaking any excavations.

Root barriers to be used in association with tree planting adjacent to kerbs / services / footpaths etc. (Greenleaf ReRoot products or similar application, in accordance with manufacturer's instructions).

NOTES:
Please note all planting mixes should be planted as follows:
Shrubs/Graasses to be planted in groups of 3-5 to the rear of the mix area. With herbaceous to be planted in groups of 3 randomly throughout mix area.

For Landscape Specification refer to drawing 1619 A6 17
For Rain Gardens refer to drawing 1619 A6 04
For Tree Specification refer to drawing 1619 A6 03

FOR CONTINUATION REFER LLA DWG 1619 A6 15

FOR CONTINUATION REFER LLA DWG 1619 A6 16

FOR CONTINUATION REFER LLA DWG 1619 A6 13

LOCATION MAP: NTS



Rev	Date	Description
A	11.11.16	Tree No. reduced following comments
B	15.01.18	Planting amendments following architectural layout alterations
C	01.03.18	Planting amendments following architectural layout alterations
D	30.04.18	Plot number amendments
E	07.09.18	Arrangement Adjustments
F	15.04.19	Site layout amended: proposals adjusted to coordinate

LIZ LAKE ASSOCIATES

Project: [illegible]
Client: [illegible]
Scale: 1:200 @ A0
Drawing No: 1619 A6 12 F

FOR CONTINUATION REFER LLA DWG 1619 A6 12

FOR CONTINUATION REFER LLA DWG 1619 A6 12

FOR CONTINUATION REFER LLA DWG 1619 A6 16

FOR CONTINUATION REFER LLA DWG 1619 A6 16

FOR CONTINUATION REFER LLA DWG 1619 A6 14

LEGEND

- Existing Vegetation to be retained
- Proposed tree planting
- Proposed hedge
- Proposed shrub/herbaceous planting
- Native hedgerow
- Aquatic/Marginal planting
- Grass: Meadow (EM1 - Basic general purpose meadow mixture by Emergent seeds or similar approved)
- Grass:Mown
- Grass:Wetland (EG8 - Meadow grass mixture for wetlands by Emergent seeds or similar approved)

GENERAL NOTES

This drawing is to be used for planting information only, and is subject to alteration through changes to the site layout or until approved by the area designer.

Any species substitution by the contractor must be verified with the Landscape Architect through the Job Architect.

This layout must be checked in accordance with WHC Standards 2013 (Chapter 4.2 - Building Near Trees & Chapter 9.2 Drives, Paths and Landscaping) by the Regional Engineer prior to implementation.

Excavations: Contractors must ensure that they have full information relating to service and drainage positions before undertaking any excavations.

Root barriers to be used in association with tree planting adjacent to kerbs / services / footpaths etc. (Greenleaf ReRoot products or similar application, in accordance with manufacturers instructions).

NOTES:
Please note all planting mixes should be planted as follows:
Shrubs/Grasses to be planted in groups of 3 to 5 to the rear of the mix area. With herbaceous to be planted in groups of 3 randomly throughout mix area.

For Landscape Specification refer to drawing 1619 A6 17
For Rain Gardens refer to drawing 1619 A6 04
For Tree Specifications refer to drawing 1619 A6 03

LOCATION MAP: NTS

Rev	Date	Description
A	11.11.16	Tree No. reduced following comments
B	30.11.16	Plot number amendments
C	07.09.18	Arrangement Adjustments
D	15.04.19	Site layout amend. proposals adjusted to coordinate

Title: Detailed Planting Schedule - Phase 9
 Project: [Redacted]
 Client: [Redacted]
 Designer: [Redacted]
 Scale: 1:200 @ A0
 Drawing No: 1619 A6 13 D
 Rev: 1

LIZ LAKE ASSOCIATES