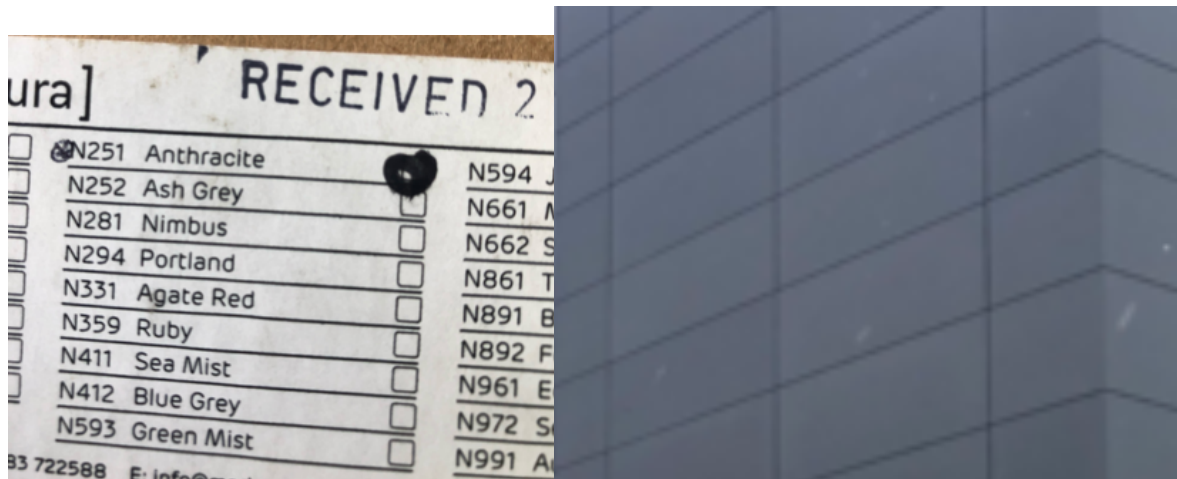


Schedule of Façade materials: Buildings 1 & 3 Oxford Technology Park

Building One

Equitone Rainscreen – Colour ‘Anthracite’



(As used on plot 2, the hotel at Oxford Technology Park)

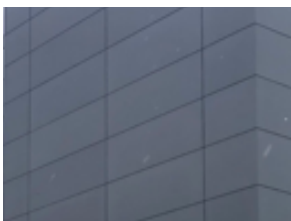
Kingspan Spectrum Panels – Colours;

1. Basalt – RAL 7012 (See page 21 of the appended brochure)
2. Adventura – RAL 7000 (See page 21 of the appended brochure)
3. Silver – RAL 9006 (See page 21 of the appended brochure)

Building Three

Equitone Rainscreen – colours

1. Natura Anthracite (N251) -



2. Natura Pale Mist (N161) –



3. Natura Classic Grey (N211) –



Kingspan Spectrum Panels in Basalt – RAL 7012 (See page 21 of the appended brochure)

All Equitone colour samples can be viewed onsite at site office at Oxford Technology Park, or at [Equitone.com/en-gb/materials/natura/](https://www.equitone.com/en-gb/materials/natura/)