



KEY

- Existing:
- Existing highway drainage surface water pipe to be retained. Information taken from greenhatch group drawing number 11711_UG rev 4.
 - Existing highway gully and connection to be retained.
 - Existing drainage ditch to be retained.
 - Existing gully to be abandoned. Existing gully tail may be required for re-use otherwise pot and tail to be treated in accordance with SHW CL. 506.3. Refer to site clearance drawing no. D-0105.
 - Existing Thames Water surface water sewer route. Existing line and level to be verified prior to construction. Refer to drawing number D-0195 for more details.

- Private:
- Diverted private drainage ditch.

- S278 adoptable:
- New highway surface water brick built manhole. Manhole ring size to be in accordance with Sewers for Adoption 6th ED. Refer to detail shown on drawing number D-0155.
 - New highway surface water pipe UPVC (HDPE) to BS EN 1401-1:2009. Refer to drawing number D-0155 for bedding details.
 - New highway surface water concrete 450Ø pipe. Refer to drawing number D-0155 for bedding details.
 - New highway surface water manhole. Manhole ring size to be in accordance with Sewers for Adoption 6th ED. Refer to detail shown on drawing number D-0155.
 - New highway surface water Oil Separator.
 - New highway gully and 150mmØ connection. 450mm x 900mm internal dimension. Refer to detail shown on drawing number D-0155.
 - New headwall. See headwall schedule on drawing number D0155.
 - New ACO kerb drain. Half batter profile. HBxxx indicates size of base. Arrow indicates direction of flow. Refer to ACO kerb drain standard details.
 - New ACO kerb drain gully. Half batter profile. Use top and shallow base assembly KDH610. 160mmØ outfall pipe. Refer to ACO kerb drain standard details.
 - New ACO kerb access unit. Half batter profile. Refer to ACO kerb drain standard details.
 - Erosion matting located at diverted ditch outfall. Refer to detail shown on drawing number D-0155.

- Notes:
- Topographical survey background taken from Green Hatch Group drawing number 17711 OGL rev 3.
 - Drawing to be read in conjunction with the drawings:
 - D-0152: Balancing pond x-section.
 - D-0153: Drainage long sections.
 - D-0154: Manhole Schedule.
 - D-0155: Drainage construction details.
 - All works to be carried out to local authority standards for adoptable roads.
 - The location and status of any utility apparatus to be determined prior to the commencement of any works.
 - All materials to be laid in accordance with manufacturer's instructions subject to approval of Oxfordshire County Council.
 - Contractor must comply with the NRSWA 1991 for traffic management and for any road works within the highway. Oxfordshire County Council streetworks department should be consulted for details of restricted working times/periods, this may be in addition to any restrictions stated in planning condition.
 - The planning, design and construction of sewers shall be in accordance with Sewers for Adoption 6th Edition, a design and construction guide for developers, the Civil Engineering Specification for the Water Industry 7th Edition.
 - All adoptable highway drains within adoptable highway with less than 1.2m cover to have reinforced concrete slab protection. All Adoptable sewers within grassed areas with cover less than 0.9m to have reinforced concrete slab protection. All areas with greater cover than the minimum required to have type S bed and surround.
 - Proposed adoptable highway drains are only permitted to have other drains/gully connections and other services laid at an angle of between 45° and 90° across the line with a vertical clearance in excess of 300mm.

SAFETY, HEALTH AND ENVIRONMENTAL INFORMATION

This list is not an exhaustive register of all hazards or risks present. It identifies only the significant risks remaining following the internal risk assessment undertaken by the project designers. It should be considered alongside the typical risks and hazards that a competent and experienced contractor would expect to be present during such construction related activity.

CONSTRUCTION
The Contractor's attention is drawn to the following Health and Safety risk.

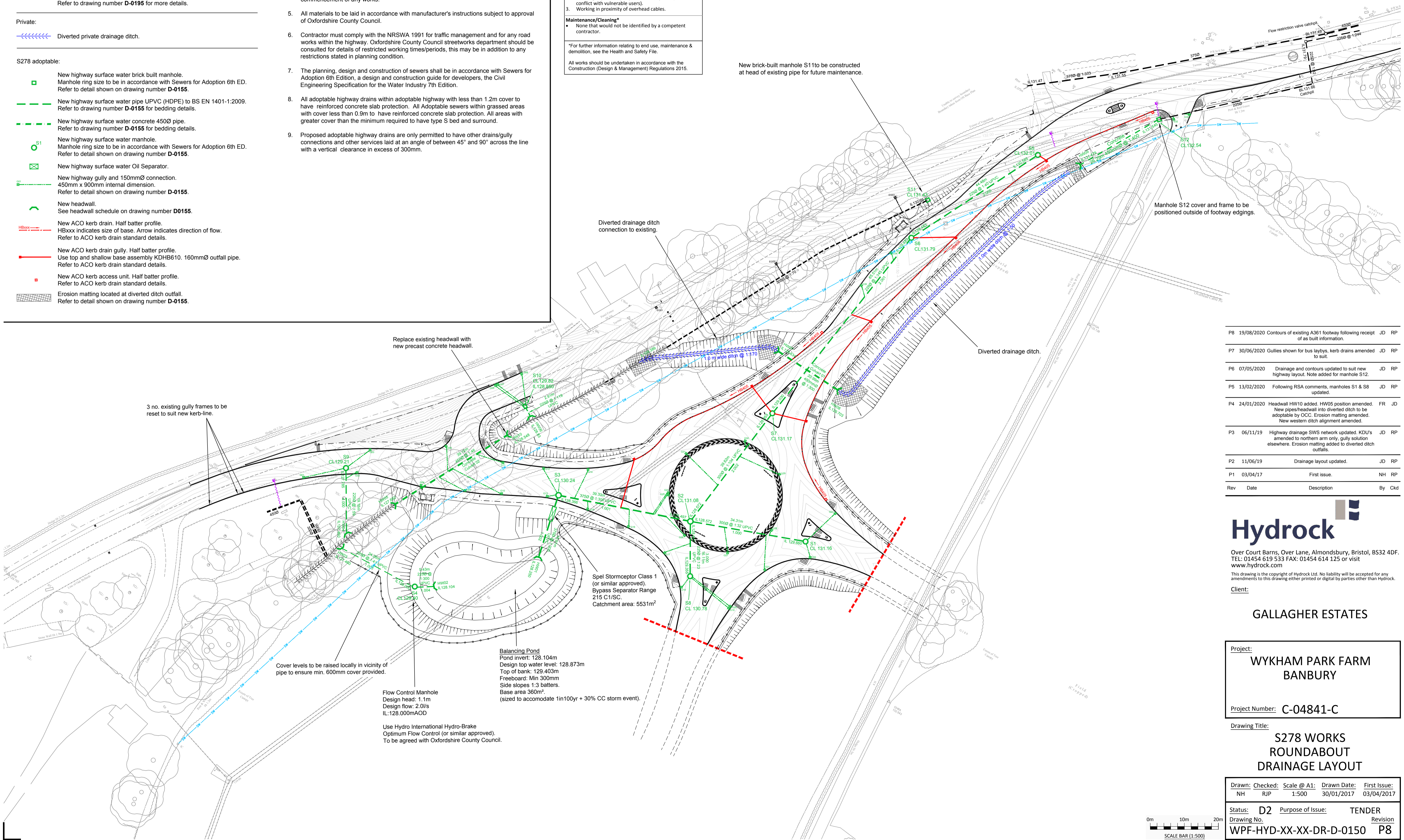
- Working adjacent to live carriageway (risk of conflict with vehicles).
- Working in proximity of pedestrians/cyclists (risk of conflict with vulnerable users).
- Working in proximity of overhead cables.

Maintenance/Cleaning*

- None that would not be identified by a competent contractor.

*For further information relating to end use, maintenance & demolition, see the Health and Safety File.

All works should be undertaken in accordance with the Construction (Design & Management) Regulations 2015.



Rev	Date	Description	By	Ckd
P8	19/08/2020	Contours of existing A361 footway following receipt of as built information.	JD	RP
P7	30/06/2020	Gullies shown for bus laybys, kerb drains amended to suit.	JD	RP
P6	07/05/2020	Drainage and contours updated to suit new highway layout. Note added for manhole S12.	JD	RP
P5	13/02/2020	Following RSA comments, manholes S1 & S8 updated.	JD	RP
P4	24/01/2020	Headwall HW10 added. HW05 position amended. New pipes/headwall into diverted ditch to be adoptable by OCC. Erosion matting amended. New western ditch alignment amended.	FR	JD
P3	06/11/19	Highway drainage SWS network updated. KDU's amended to northern arm only, gully solution elsewhere. Erosion matting added to diverted ditch outfalls.	JD	RP
P2	11/06/19	Drainage layout updated.	JD	RP
P1	03/04/17	First issue.	NH	RP

Hydrock

Over Court Barns, Over Lane, Almondsbury, Bristol, BS32 4DF.
 TEL: 01454 619 533 FAX: 01454 614 125 or visit www.hydrock.com

This drawing is the copyright of Hydrock Ltd. No liability will be accepted for any amendments to this drawing either printed or digital by parties other than Hydrock.

Client: **GALLAGHER ESTATES**

Project: **WYKHAM PARK FARM BANBURY**

Project Number: **C-04841-C**

Drawing Title: **S278 WORKS ROUNDABOUT DRAINAGE LAYOUT**

Drawn: NH	Checked: RJP	Scale @ A1: 1:500	Drawn Date: 30/01/2017	First Issue: 03/04/2017
Status: D2	Purpose of Issue: TENDER		Revision: P8	
Drawing No. WPF-HYD-XX-XX-DR-D-0150				

