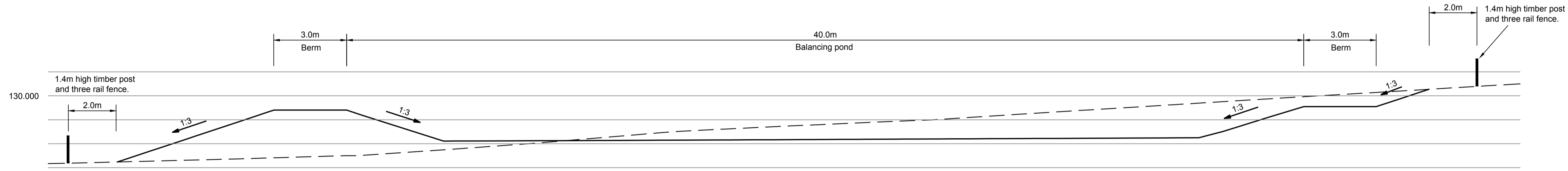
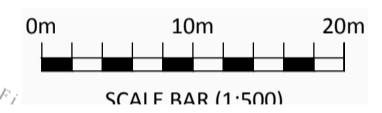
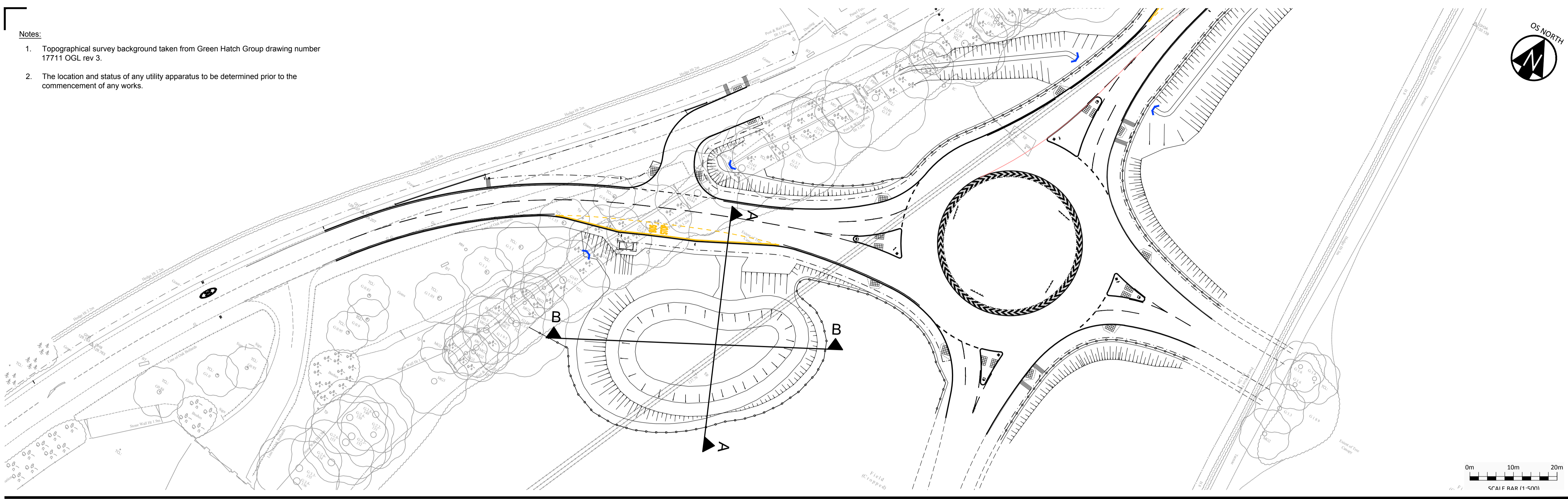


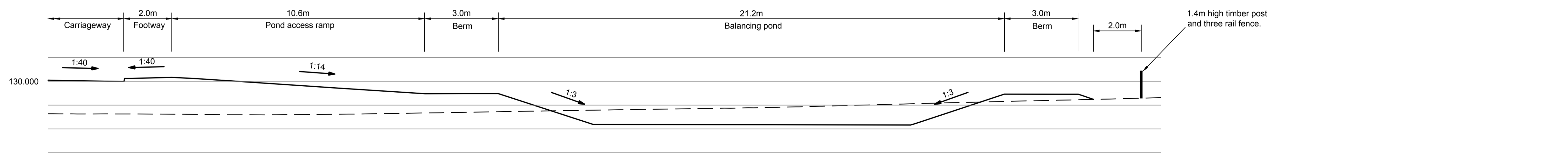
Notes:

1. Topographical survey background taken from Green Hatch Group drawing number 17711 OGL rev 3.
2. The location and status of any utility apparatus to be determined prior to the commencement of any works.



CHAINAGE	0.000	2.895	5.000	10.000	15.000	20.000	25.000	30.000	35.000	40.000	45.000	50.000	55.000	57.770	60.000	61.584
EXISTING LEVEL	127.169		127.290	127.428	127.641	127.894	128.407	128.694	128.916	129.190	129.499	129.809	130.108		130.407	130.500
PROPOSED_WITH_BATTERS		127.238	127.932	129.406	128.598	128.123	128.143	128.164	128.188	128.211	128.234	128.774	129.549	130.273		

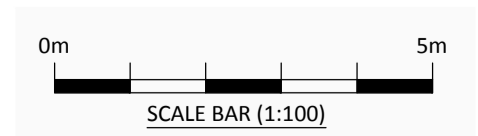
SECTION B-B



CHAINAGE	0.000	5.000	10.000	15.000	20.000	25.000	30.000	35.000	40.000	43.740	45.000	46.556
EXISTING LEVEL	128.637	128.620	128.595	128.657	128.741	128.820	128.888	129.024	129.153		129.269	129.313
PROPOSED LEVEL	130.046	130.158	129.856	129.527	129.103	128.183	128.174	128.165	129.455	129.239		

SECTION A-A

KEY	
	New profile.
	Existing ground profile.



Rev	Date	Description	By	Ckd
P4	07/05/20	Highway layout updated.	JD	RP
P3	24/01/20	Highway layout updated.	FR	RP
P2	06/11/19	Pond sections updated.	JD	RP
P1	26/05/17	First issue.	NH	RP

Hydrock

Over Court Barns, Over Lane, Almondsbury, Bristol, BS32 4DF.
 TEL: 01454 619 533 FAX: 01454 614 125 or visit www.hydrock.com

This drawing is the copyright of Hydrock Ltd. No liability will be accepted for any amendments to this drawing either printed or digital by parties other than Hydrock.

Client: **GALLAGHER ESTATES**

Project: **WYKHAM PARK FARM BANBURY**

Project Number: **C-04841-C**

Drawing Title: **S278 WORKS ROUNDABOUT BALANCING POND X-SECTION**

Drawn: NH	Checked: RJP	Scale @ A1: As indicated	Drawn Date: 12/05/2017	First Issue: 26/05/2017
Status: D2	Purpose of Issue: TENDER		Revision	
Drawing No. WPF-HYD-XX-XX-DR-D-0152	Revision P4			