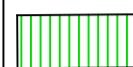
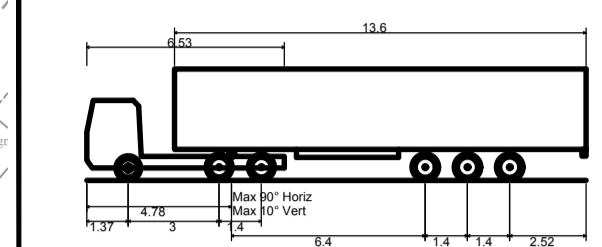




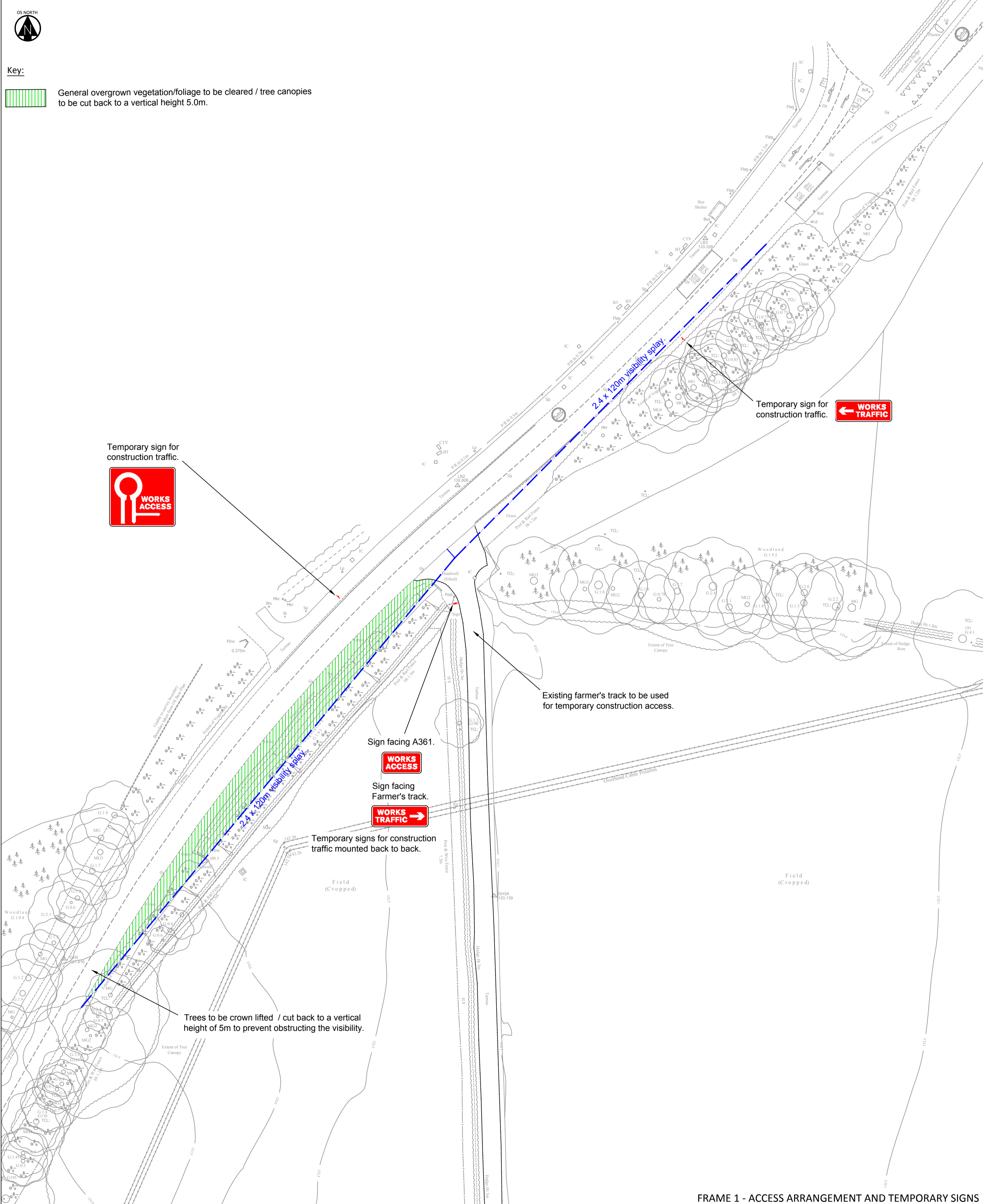
Key:

 General overgrown vegetation/foliage to be cleared / tree canopies to be cut back to a vertical height 5.0m.

Design Vehicle:



Max Legal Length (UK) Articulated Vehicle (16.5m)	16.500m
Overall Length	2.550m
Overall Width	3.681m
Min Body Ground Clearance	0.411m
Max Track Width	2.500m
Lock to lock time	6.008
Kerb to Kerb Turning Radius	6.530m



FRAME 1 - ACCESS ARRANGEMENT AND TEMPORARY SIGNS



FRAME 2 - HGV TURNING LEFT INTO DEVELOPMENT



FRAME 3 - HGV TURNING RIGHT OUT OF DEVELOPMENT

NOTES  
1. Topographical survey background taken from Green Hatch Group drawing number 17711 OGL rev 3.

REVISIONS (CONTINUED)

REVISIONS

**Hydrock**

OVER COURT BARN  
OVER LANE  
ALMONDSBURY  
BRISTOL  
BS32 4DF  
t: +44 (0) 1454 619533  
e: bristol@hydrock.com

TITLE  
TEMPORARY CONSTRUCTION ACCESS PLAN