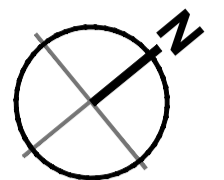
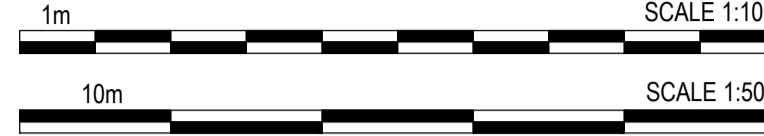
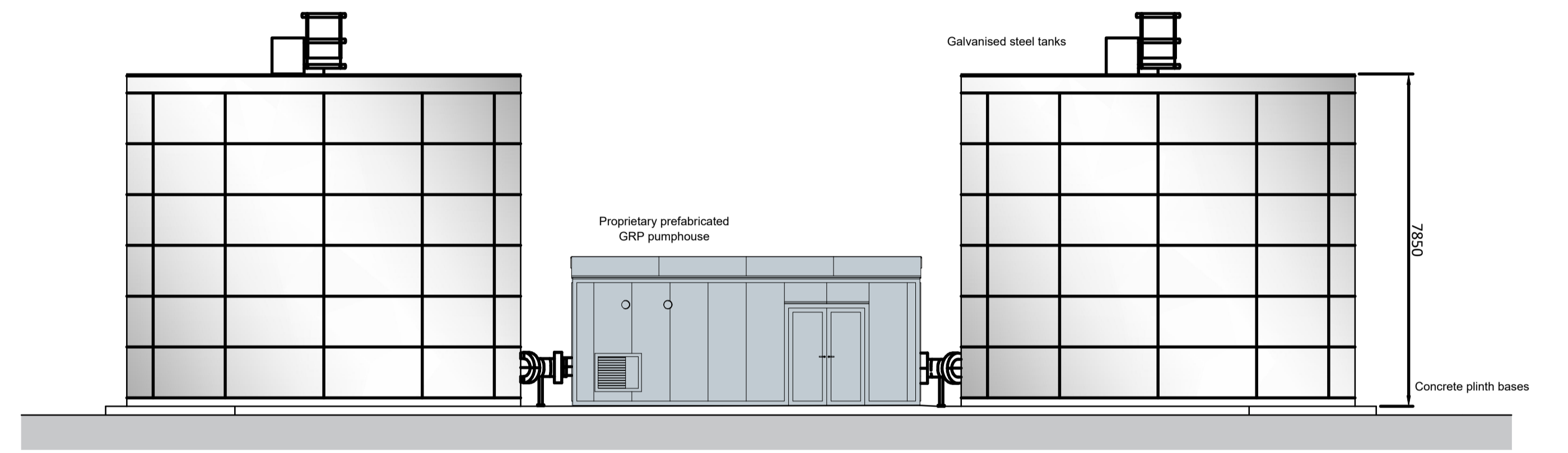


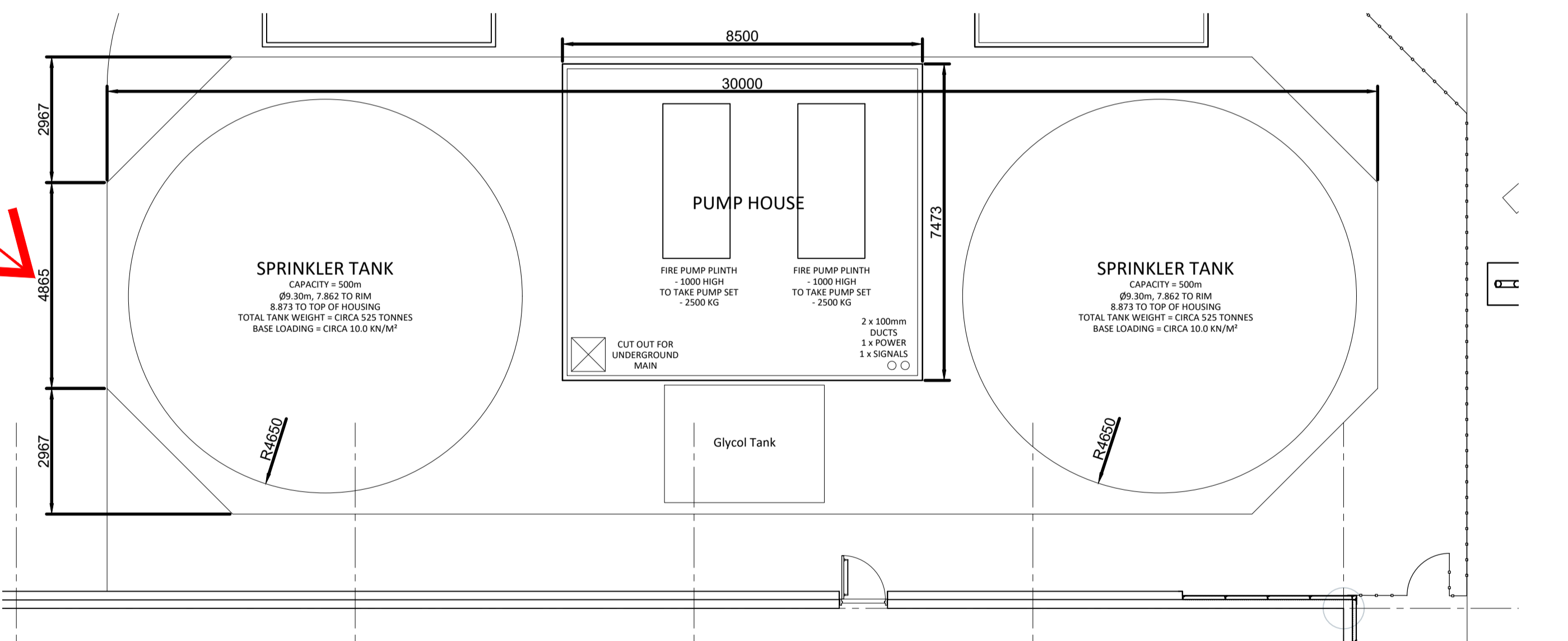
Unit B - Proposed Sprinkler Tank and Pump House
Scale: 1:500



KEY
 Indicates the location of Sprinkler Tanks and Pump House



Unit B - Proposed Sprinkler Tanks and Pump House Elevation
Scale: 1:100



Unit B - Proposed Sprinkler Tanks and Pump House Layout
Scale: 1:100

P6: Updated following Ocado comments received on 19.11.20 20.11.20 MU
 P5: Updated following meeting comments on 13.11.20 and to suit Ocado 18.11.20 MU
 amended requirements of 16.11.20
 P4: Updated to Ocado Rev 2020 Planning Requirements 12.11.20 sh
 P3: minor amendments 02.10.19 sh
 P2: minor amendments 25.09.19 sh
 P1: only Planning issue 24.09.19 sh
 A: UMC initial issue 09.09.19



php architects

The Old Rectory Rectory Lane Milton Malzor
 NORTHAMPTON NN7 3AQ
 t: +44 (0)1604 858916 f: +44 (0)1604 859123
 www.peter-haddon.com

PLANNING

Issue Purpose:
 Drawn by: SPH Checked by: RM
 Scale @ A1: AS NOTED Date: NOVEMBER 2020
 CAD ref: Dwg no.: 4036-B10-112A Rev:
4036-B10-112 P6

PROPOSED SPRINKLER TANKS / PUMP HOUSE

Copyright reserved. Dimensions to be checked on site. Discrepancies to be reported before proceeding