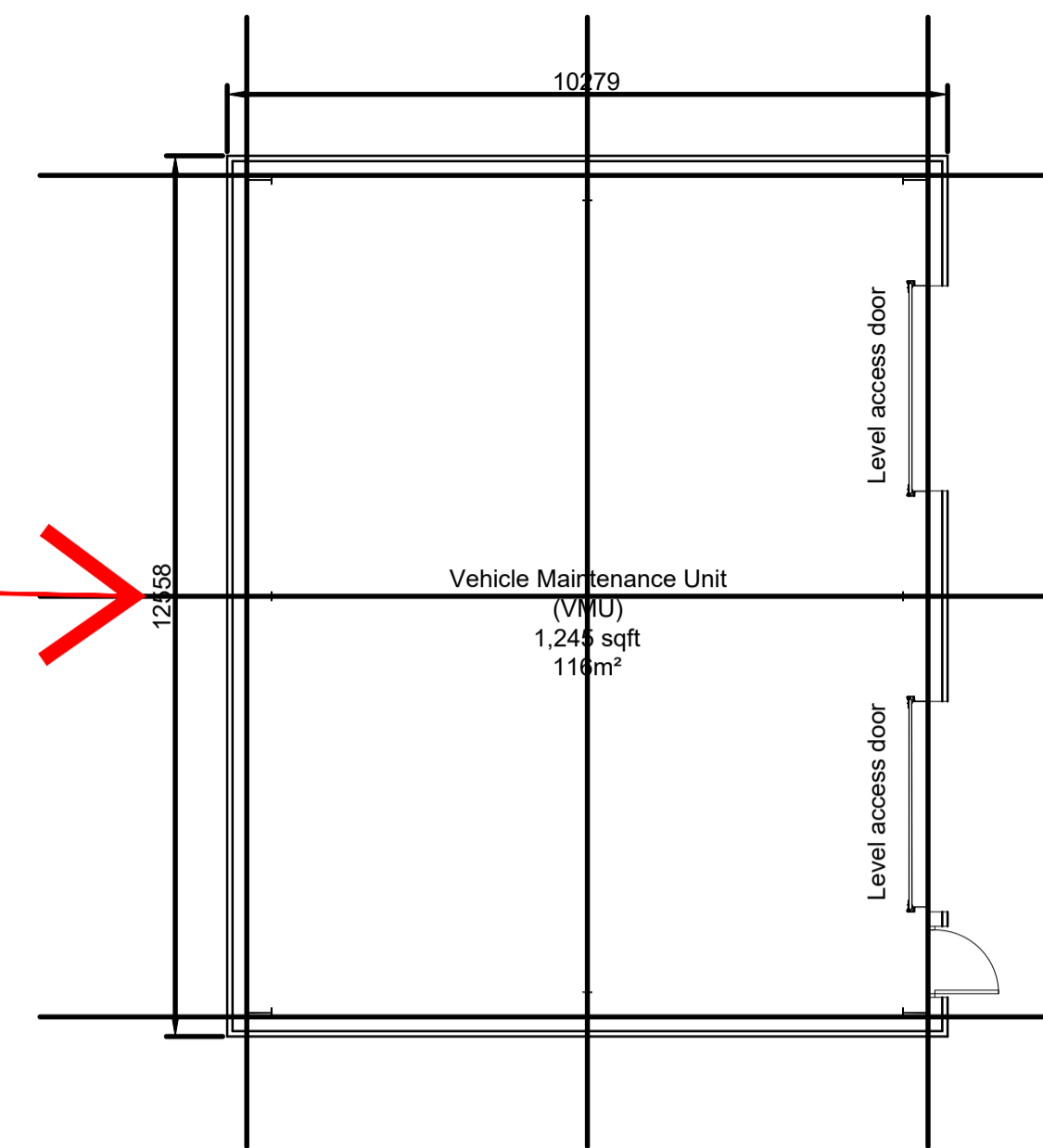



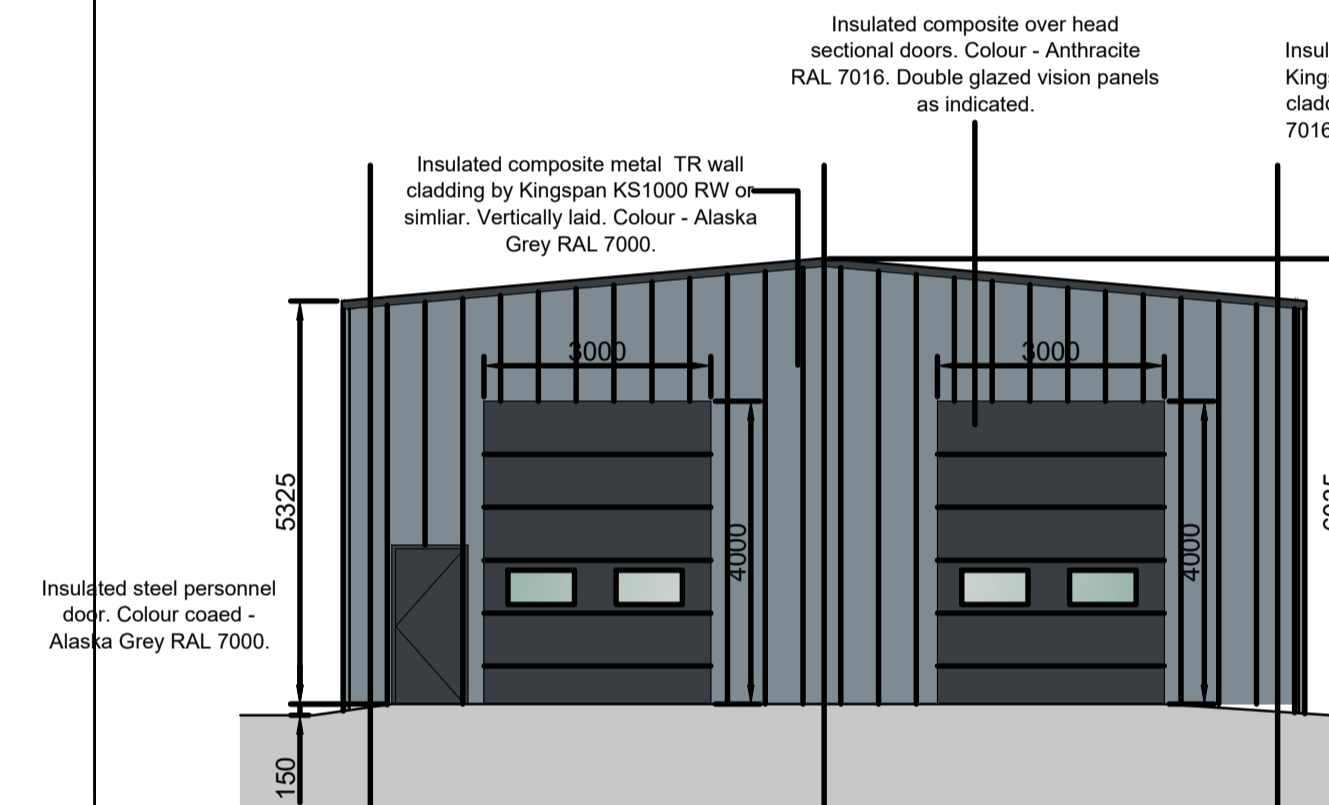
Unit B - Proposed VMU
Scale: 1:500



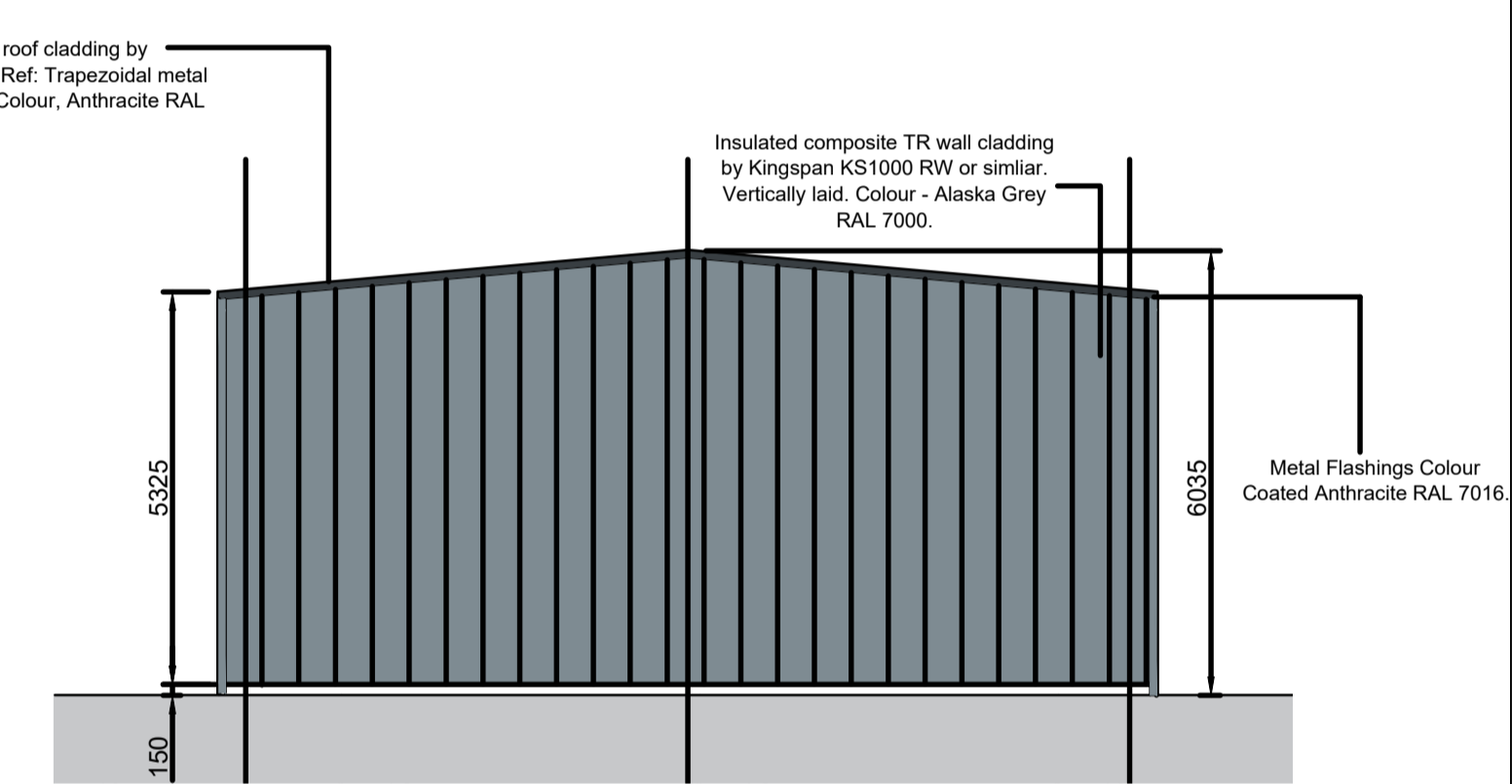
VMU Layout
Scale: 1:100



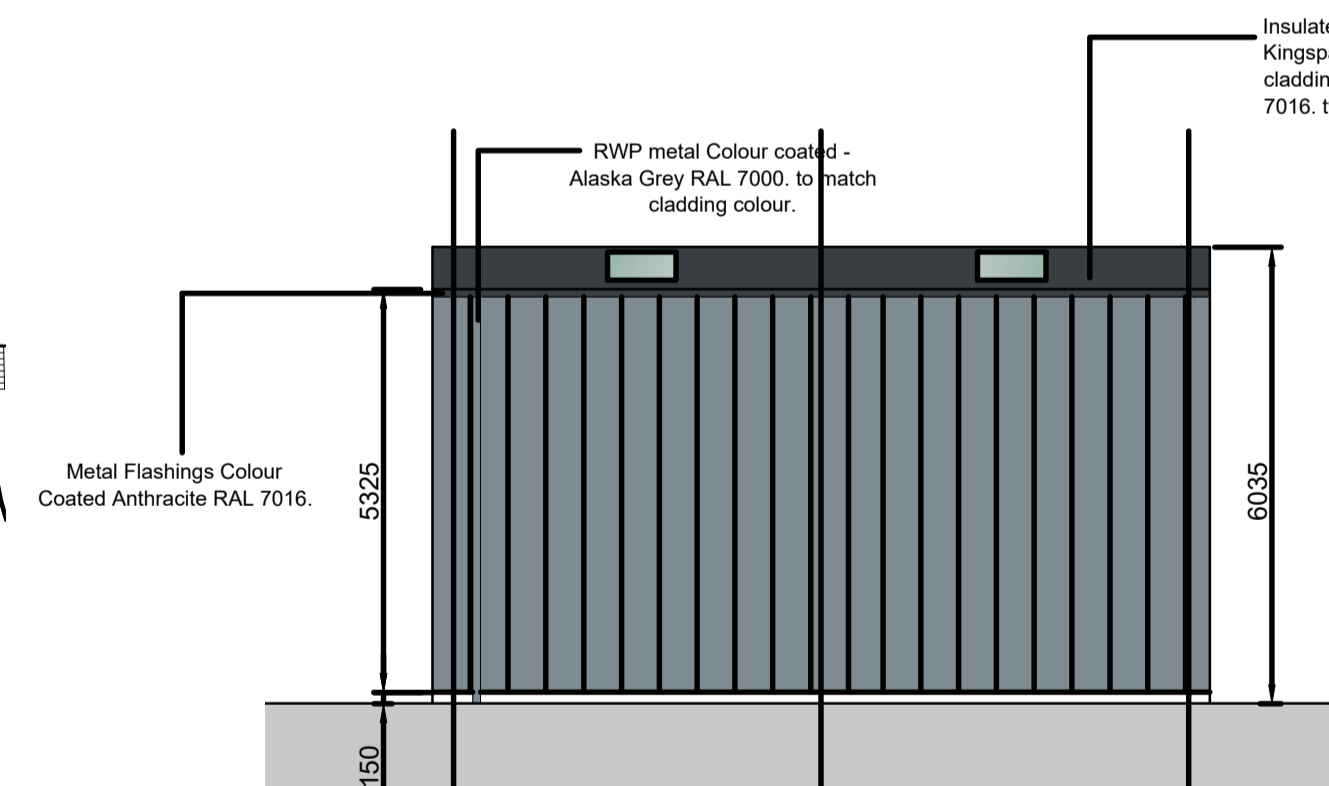
KEY
 Indicates the location of the VMU Vehicle Maintenance Unit



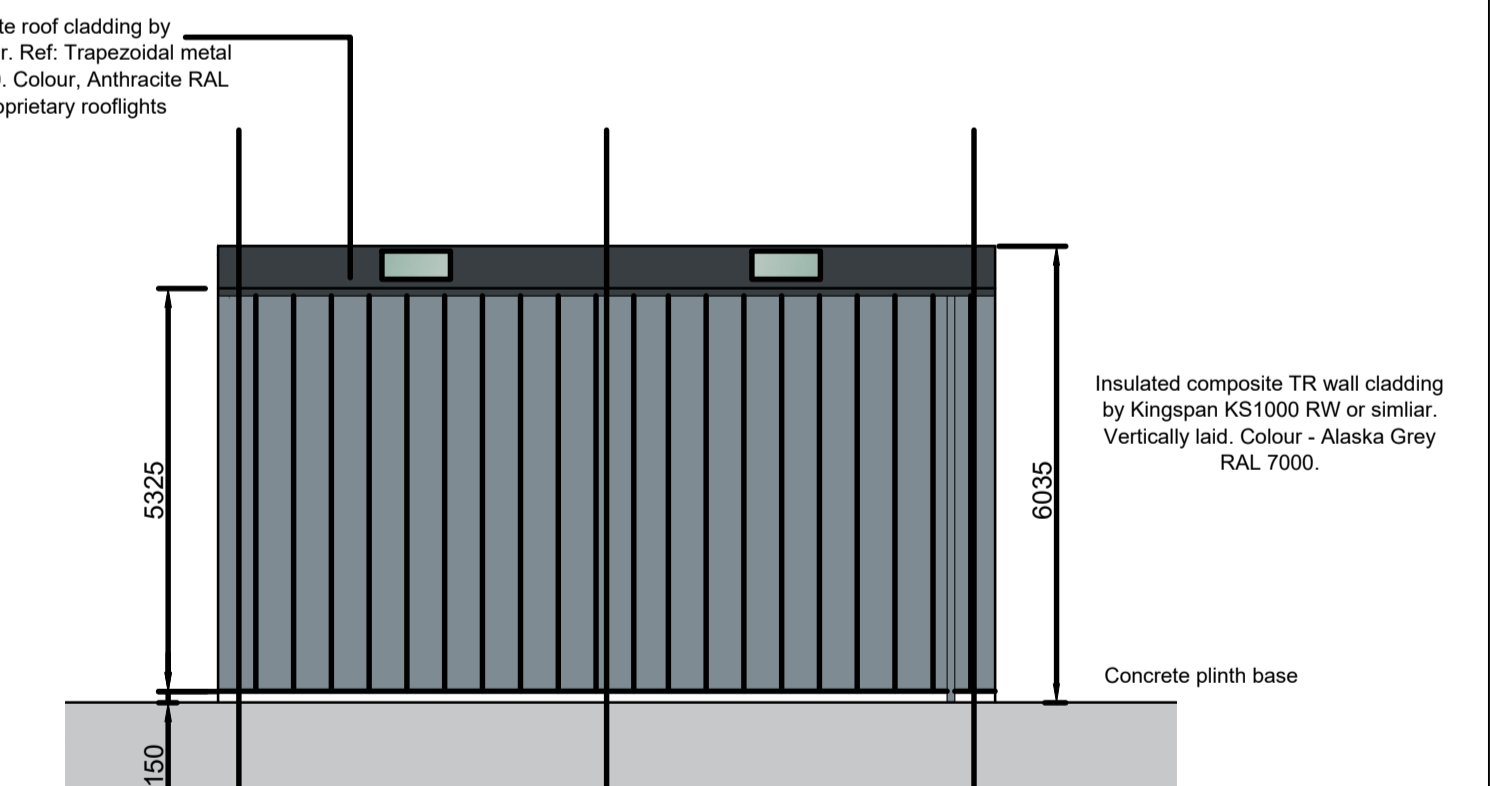
VMU North East Elevation - Scale: 1:100



VMU South West Elevation - Scale: 1:100



VMU North West Elevation - Scale: 1:100



VMU South East Elevation - Scale: 1:100

P6: Updated following Ocado comments received on 19.11.20	20.11.20 MU
P5: Updated following meeting comments on 13.11.20 and to suit Ocado amended requirements of 16.11.20	18.11.20 MU
P4: Updated to Ocado Rev 2020 Planning Requirements	12.11.20 sh
P3: parking & canopies updated	02.10.19 sh
P2: minor amendments	25.09.19 sh
P1: only Planning issue	24.09.19 sh
A: UMC initial issue	09.09.19
Rev	Date/Checked



pHp architects

The Old Rectory Rectory Lane Milton Malzor
 NORTHAMPTON NN7 3AQ
 t: +44 (0)1604 858916 f: +44 (0)1604 859123
 www.peter-haddon.com

Issue Purpose: PLANNING	
Drawn by: SPH	Checked by: RM
Scale @ A1: AS NOTED	Date: NOVEMBER 2020
CAD ref: 4036-BC-108A	Dwg no.: 4036-B10-108 P6
Copyright reserved. Dimensions to be checked on site. Discrepancies to be reported before proceeding	