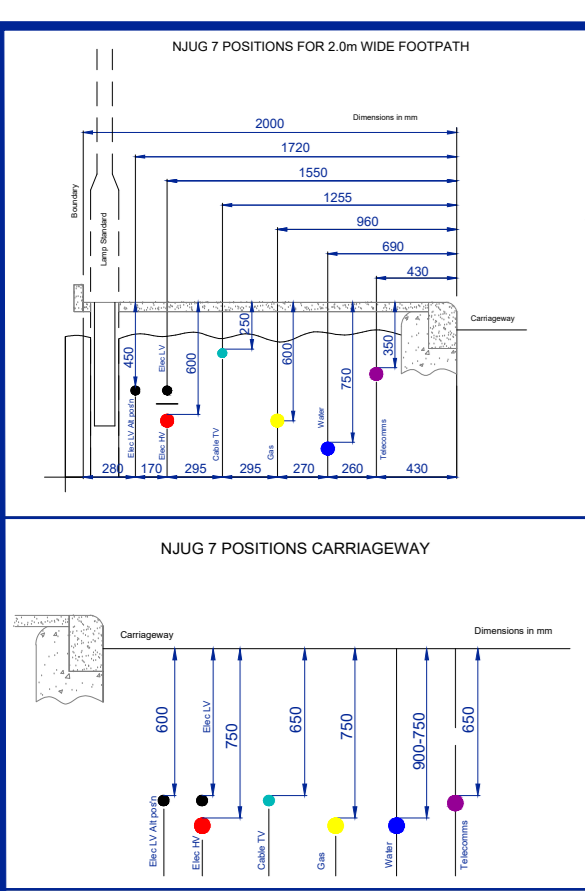


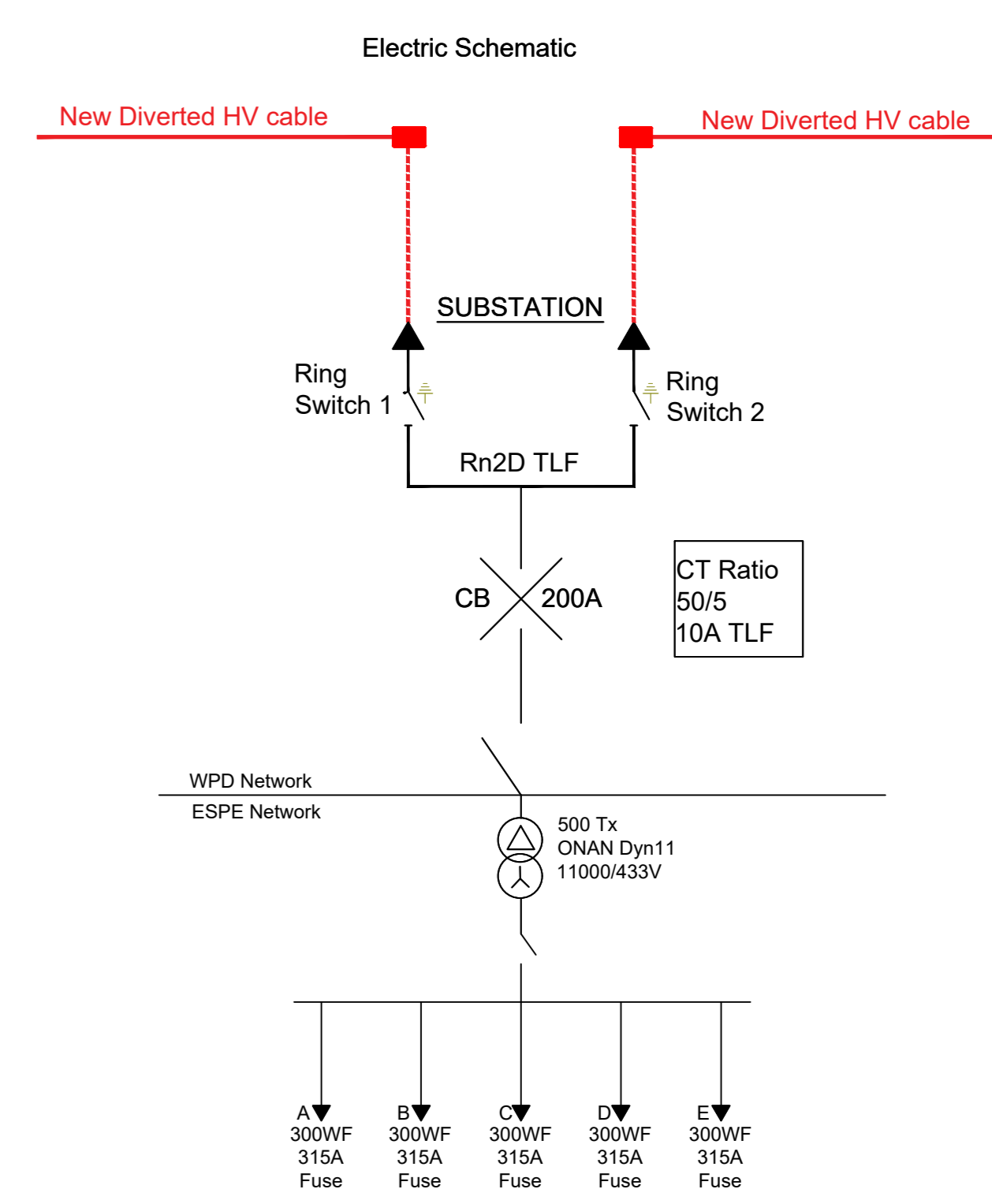
Principal Lengths

SS - POC A	437m
SS - POC B	334m
POC C - POC D	295m

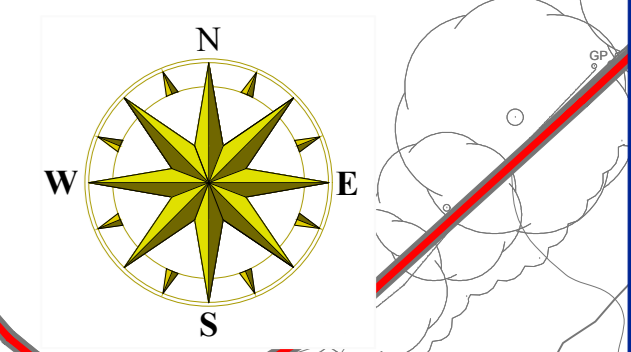
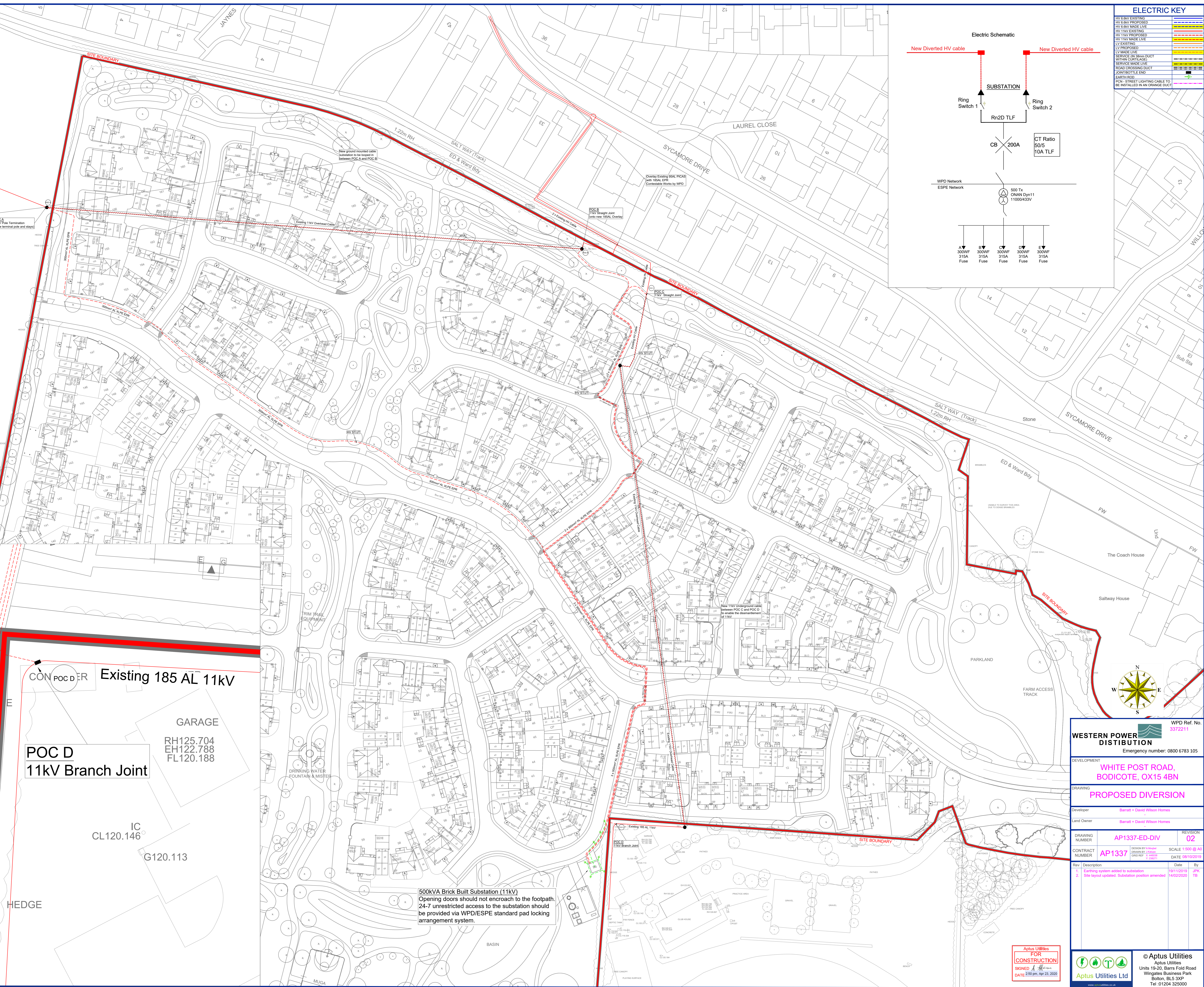
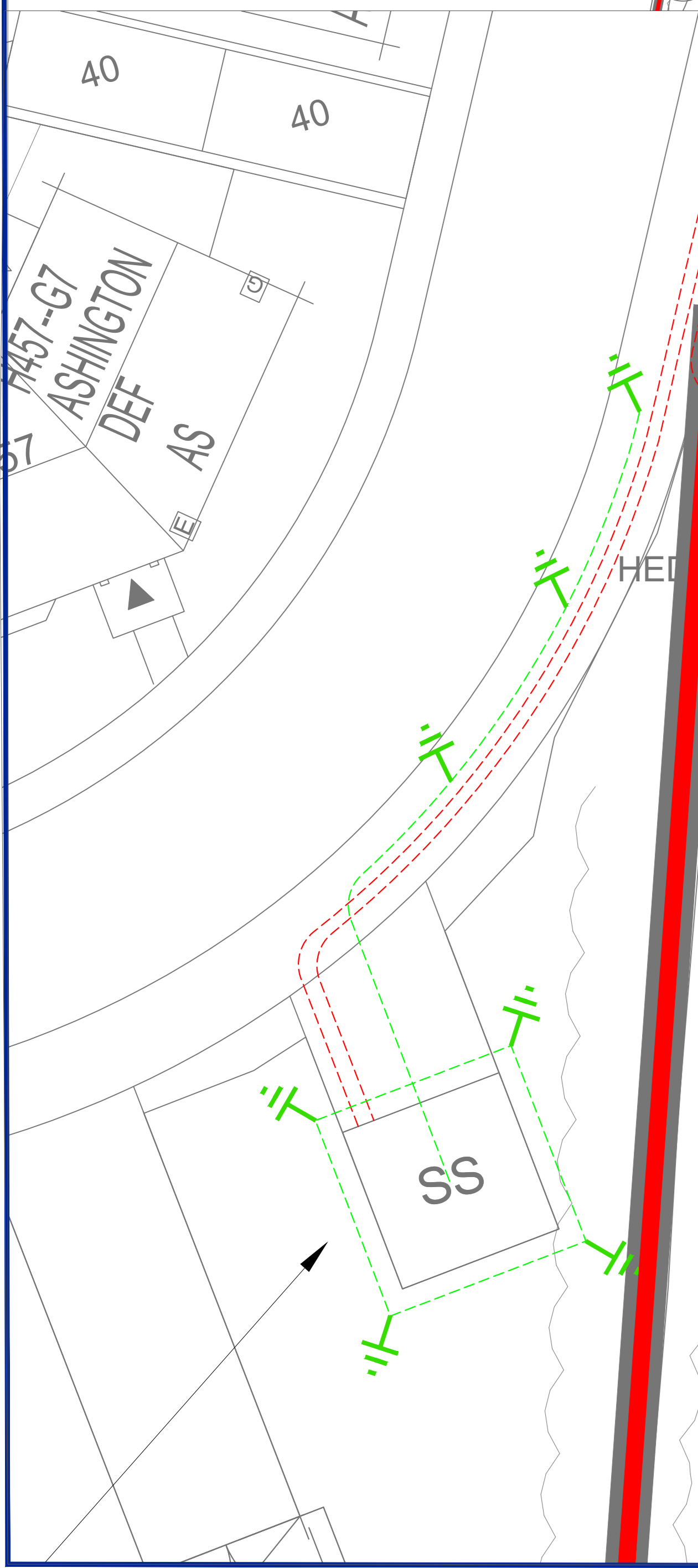


ELECTRIC KEY

LV EXISTING	---
LV 6.6KV PROPOSED	---
LV 6.6KV MADE LIVE	---
LV 11KV EXISTING	---
LV 11KV PROPOSED	---
LV 11KV MADE LIVE	---
LV EXISTING	---
LV PROPOSED	---
LV MADE LIVE	---
TERMINAL BOXES DUCT WITHIN CURB/LAGE	---
TERMINAL BOXES DUCT ROAD CROSSING DUCT JOINT/BOTTLE END	---
EARTH ROD	---
PCN - STREET LIGHTING CABLE TO BE INSTALLED IN AN ORANGE DUCT	---



BELOW: DETAIL OF POC D
SCALE 1:100



WPD Ref. No. 3372211

WESTERN POWER DISTRIBUTION
Emergency number: 0800 6783 105

DEVELOPMENT: **WHITE POST ROAD, BODICOTE, OX15 4BN**

DRAWING: **PROPOSED DIVERSION**

Developer: Barratt + David Wilson Homes

Land Owner: Barratt + David Wilson Homes

DRAWING NUMBER	AP1337-ED-DIV	REVISION	02
CONTRACT NUMBER	AP1337	SCALE	1:500 @ A3
		DATE	08/10/2019

Rev	Description	Date	By
1	Earthing system added to substation	19/11/2019	JPK
2	Site layout updated; Substation position amended	14/02/2020	TB

Aptus Utilities FOR CONSTRUCTION SIGNED DATE 20/04/2020

Aptus Utilities Ltd

© Aptus Utilities
Aptus Utilities
Units 19-20, Barrs Fold Road
Wingfield Business Park
Bolton, BL5 3XP
Tel 01204 325000