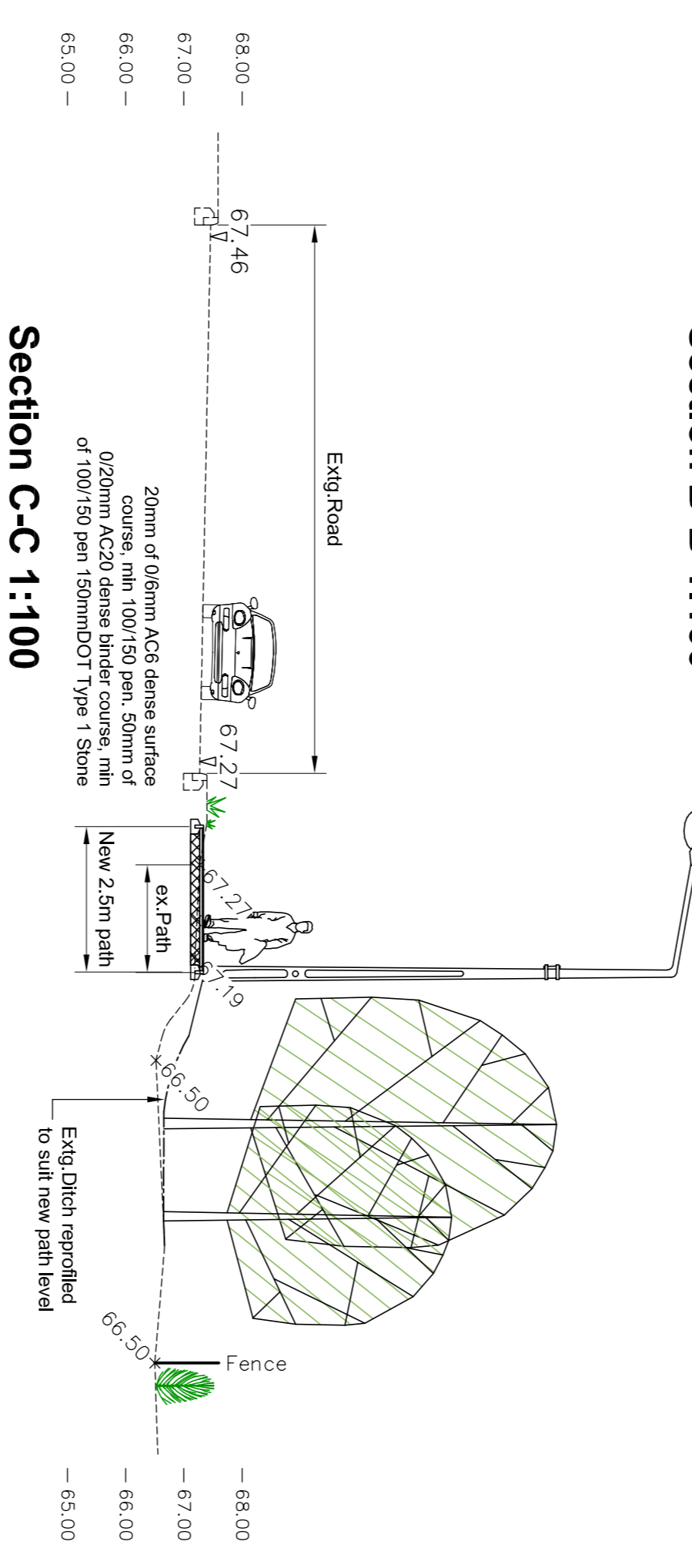
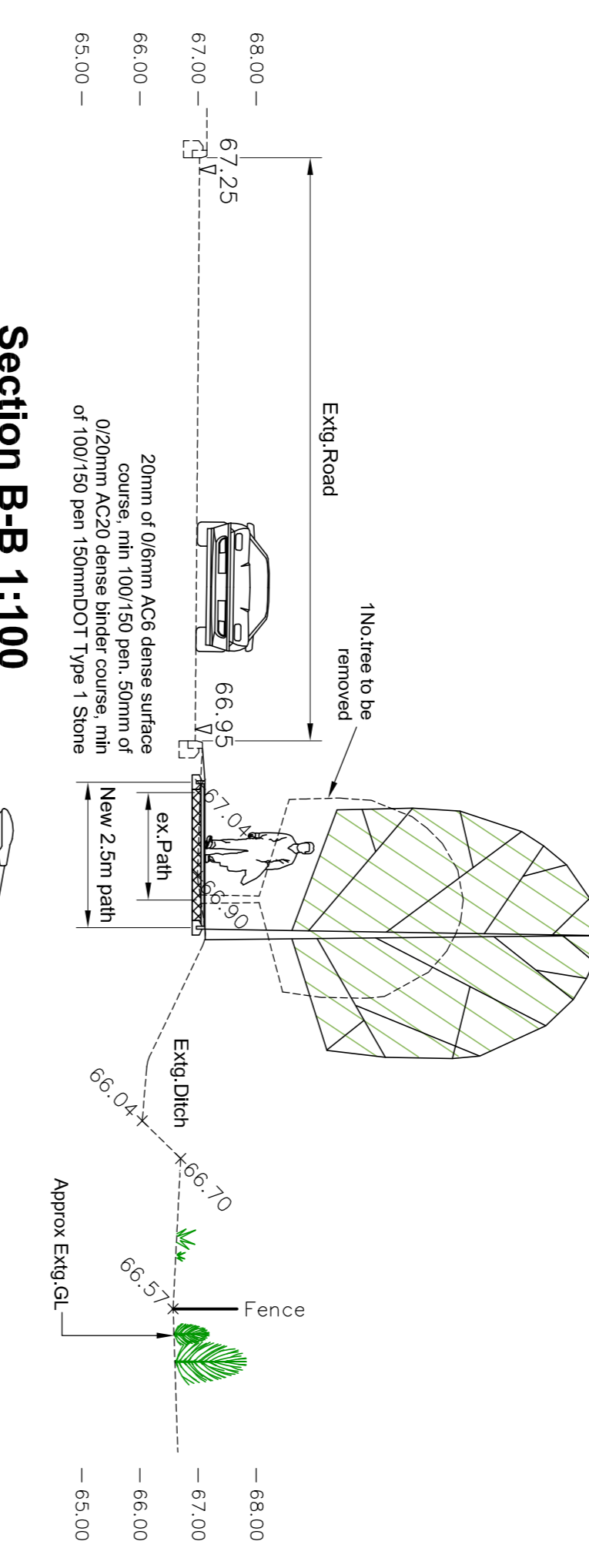
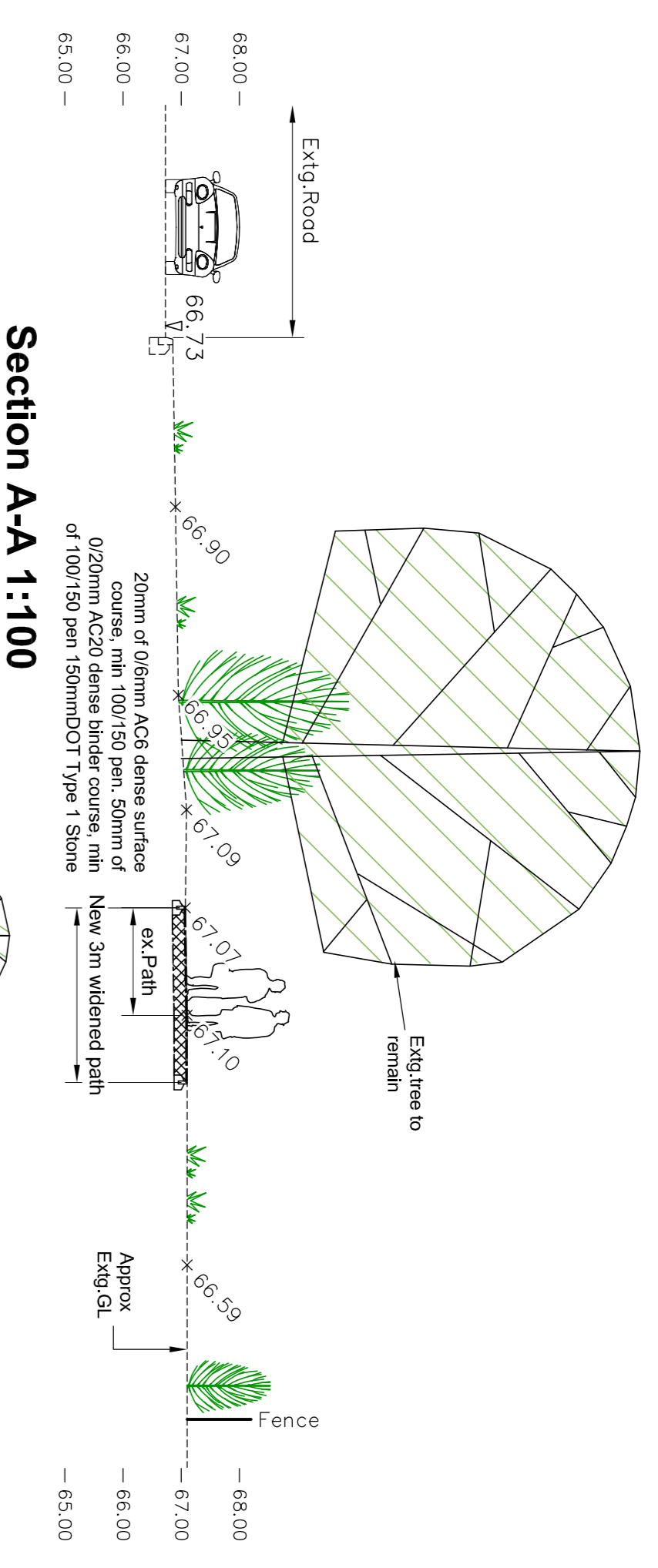
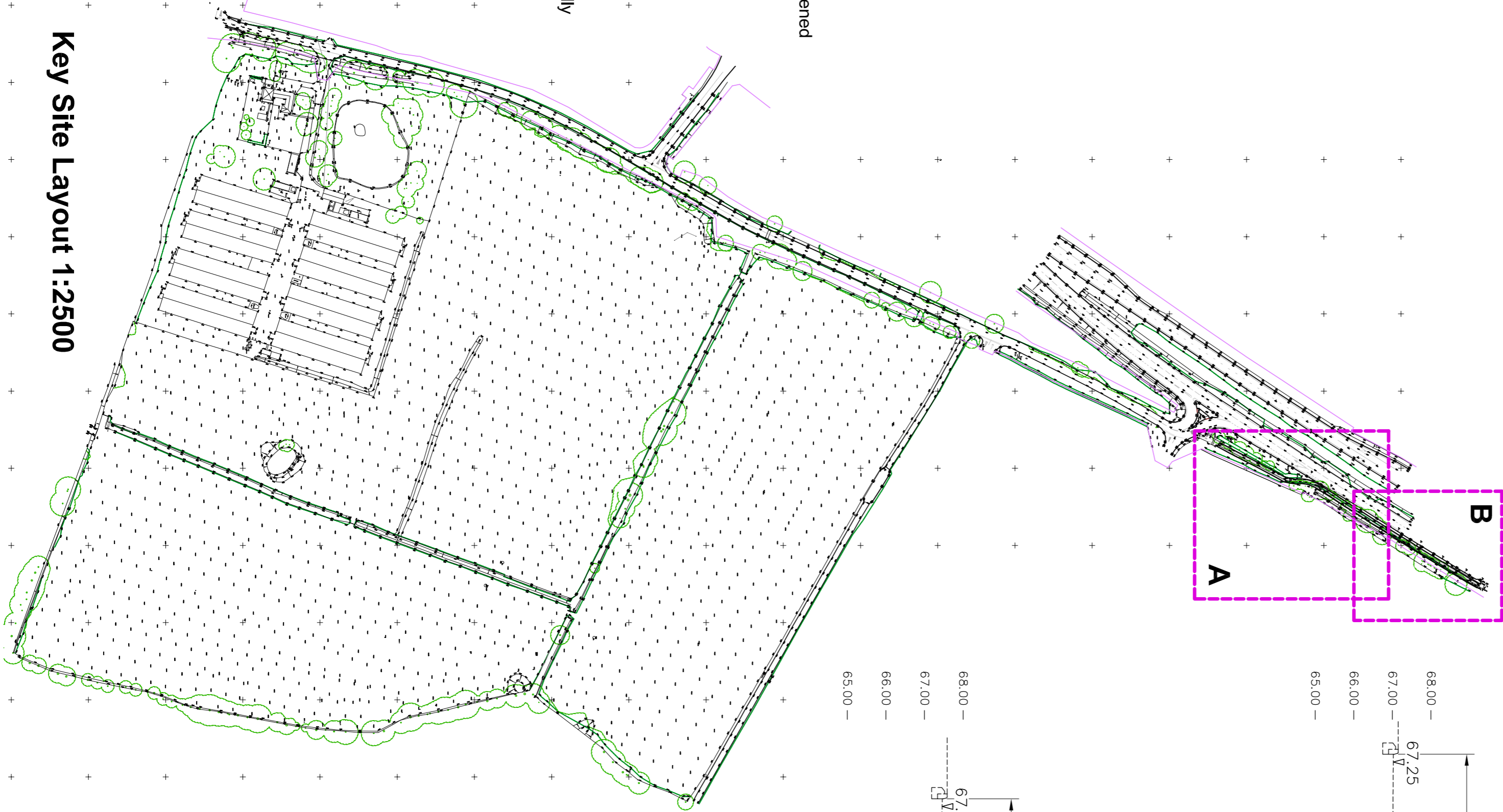
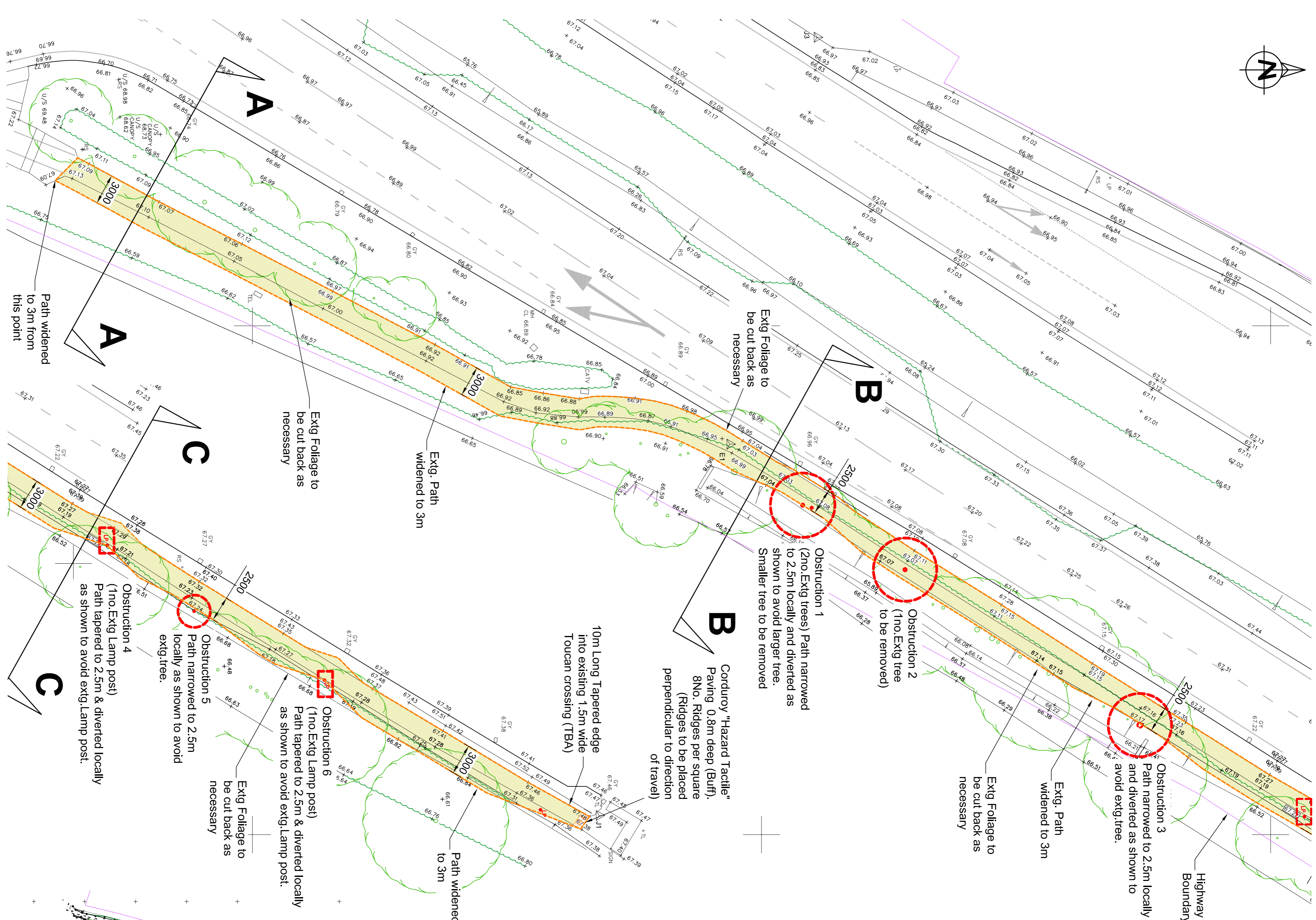


Part Plan A (1:250)

Part Plan B (1:250)

Key Site Layout 1:2500

**NOTE:**  
New cycleway 3m wide generally narrowed to 2.5m(min) as necessary to avoid extg street furniture / obstructions



**S278 AGREEMENT**

Rev	Date	Description
D	24.11.20	TECHNICAL AUDIT RESPONSE
C	22.10.20	RSA STAGE 2 RESPONSE
B	21.08.20	TECHNICAL SUBMISSION
A	07.07.20	ISSUED FOR S278 APPROVAL

Revision Schedule

Catalyst Bicester  
Wendlebury Road

Client:  
**Albion Land Plc.**

SECTION 278 WORKS  
A41 PATH WIDENING WORKS

**BAILEY JOHNSON HAYES**  
Consulting Engineers

STABINS Site 4, Phoenix House, 83 Campfield Rd, STABINS, Hens All 5PL  
MANCHESTER, Greater Manchester, M20 9RW  
MANCHESTER, Greater Manchester, M20 9RW

Scale 1:250, 1:100@A1  
Date 02.04.20  
Drawn DJC  
**S1358-S278-20D**