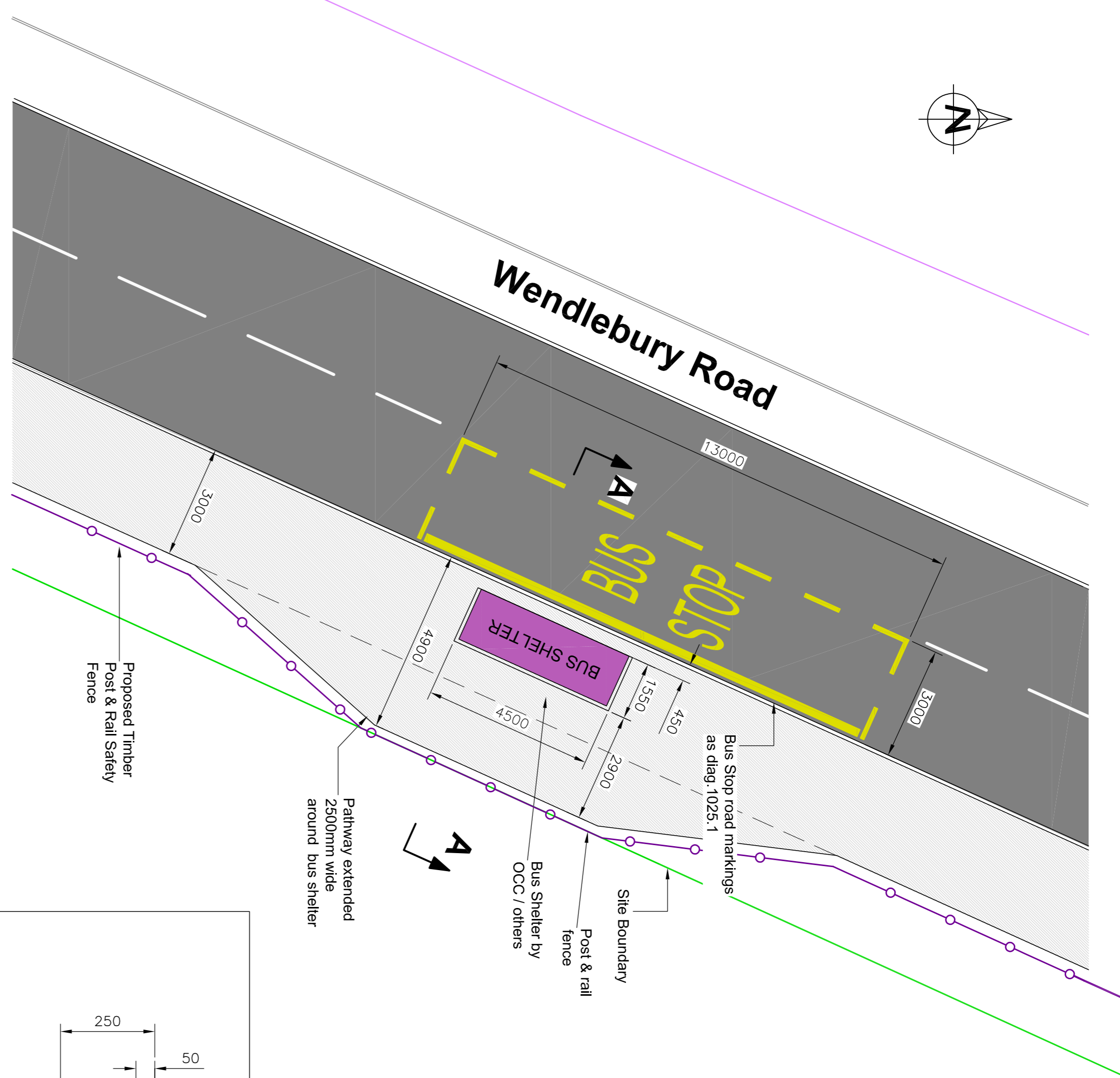
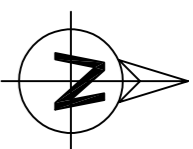
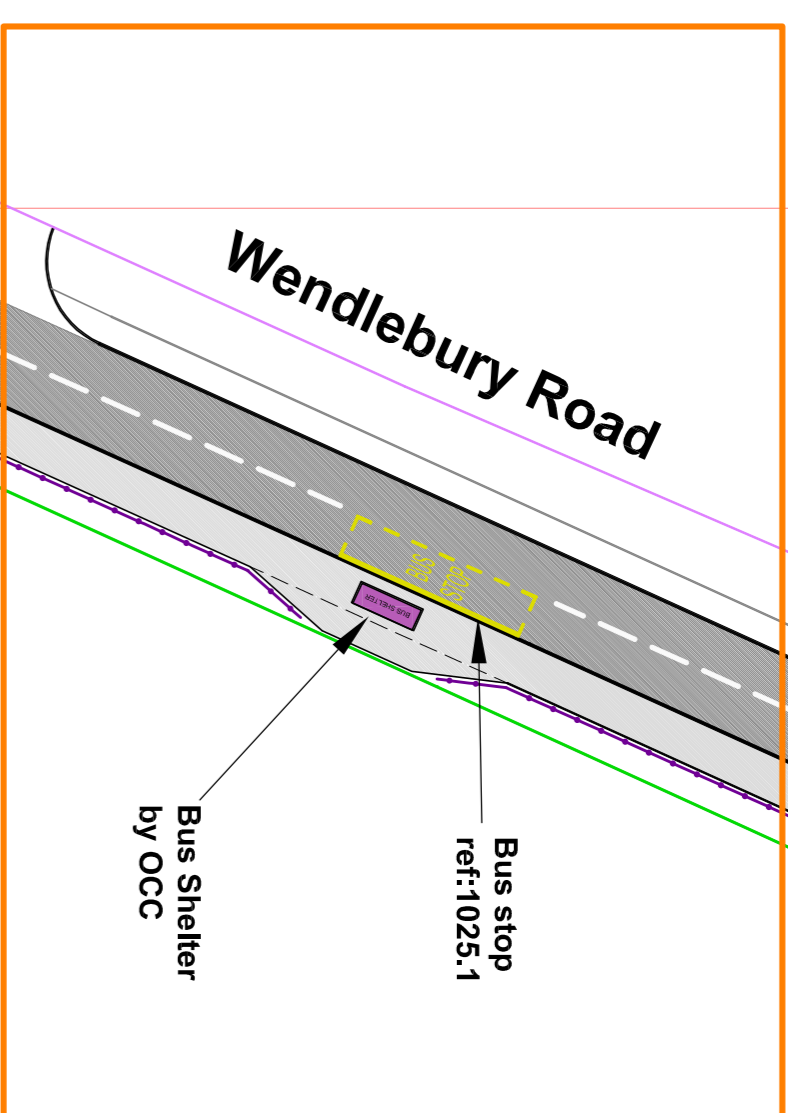


Key Road Layout 1:500



Proposed New Bus Stop on Wendlebury Road 1:100

- BUS STOP NOTES
1. ALL DIMENSIONS IN MILLIMETRES.
 2. MINIMUM 200mm GAP BETWEEN BUS STOPS ON OPPOSITE SIDES OF CARRIAGEWAY. BUS STOP MUST BE MARKED IN COLOUR (DEEP CREAM)
 - 3.

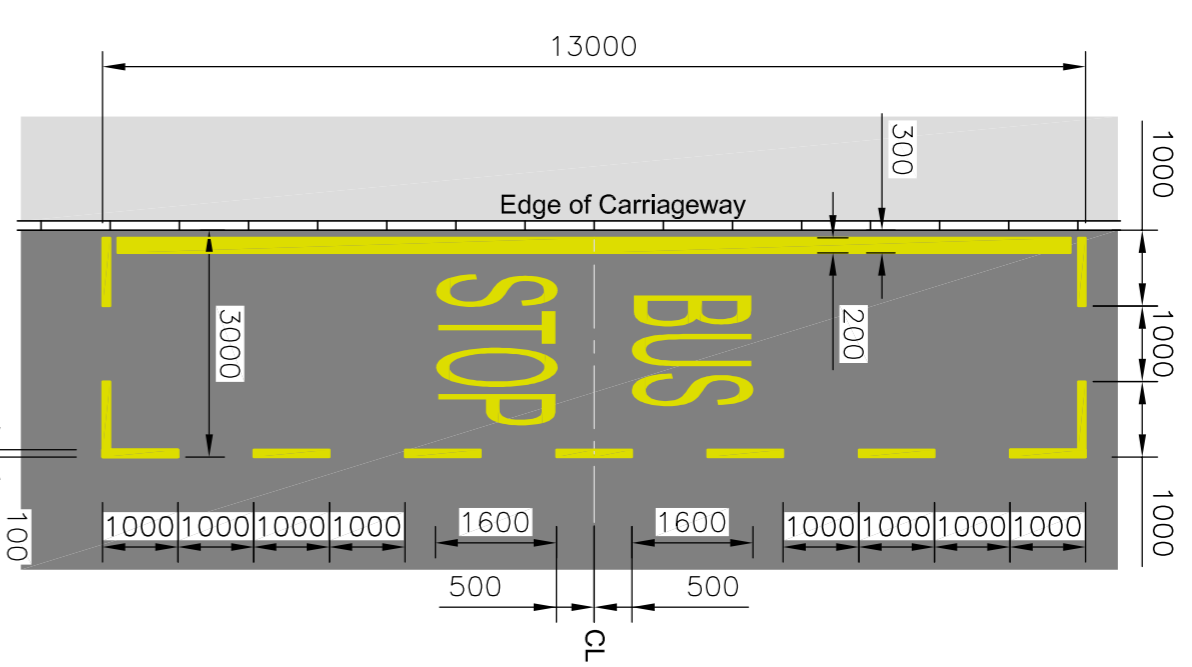
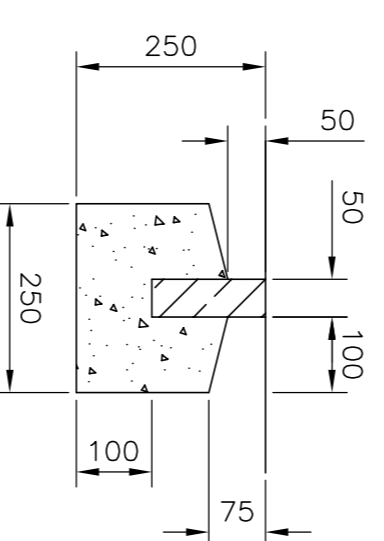
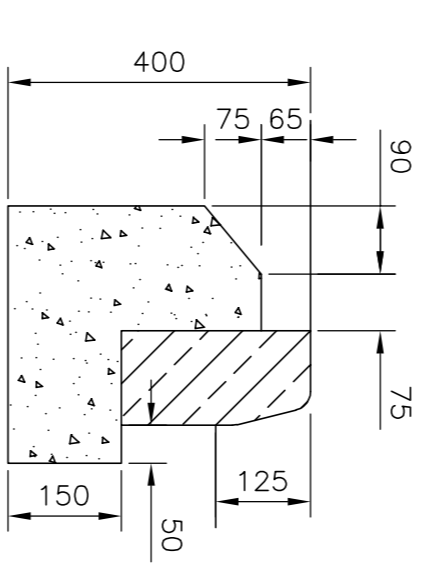


Diagram 1025.1 Bus Stop markings



EDGING KERB (FLUSH)
 precast concrete kerb to be set 1340
 50x150mm type EF square top kerb laid
 flush, haunching in ST14 concrete



HALF BATTERED KERB
 precast concrete kerb to be set 1340
 125x255mm type HB2 with 125mm
 upstand haunching in ST14 concrete

S278 AGREEMENT

E	11.12.20	Bus Stop lining updated + shelter facing away from carriageway
D	24.11.20	TECHNICAL AUDIT RESPONSE
C	22.10.20	RSA STAGE 2 RESPONSE
B	21.09.20	TECHNICAL SUBMISSION
A	07.07.20	ISSUED FOR S278 APPROVAL

Revision Schedule

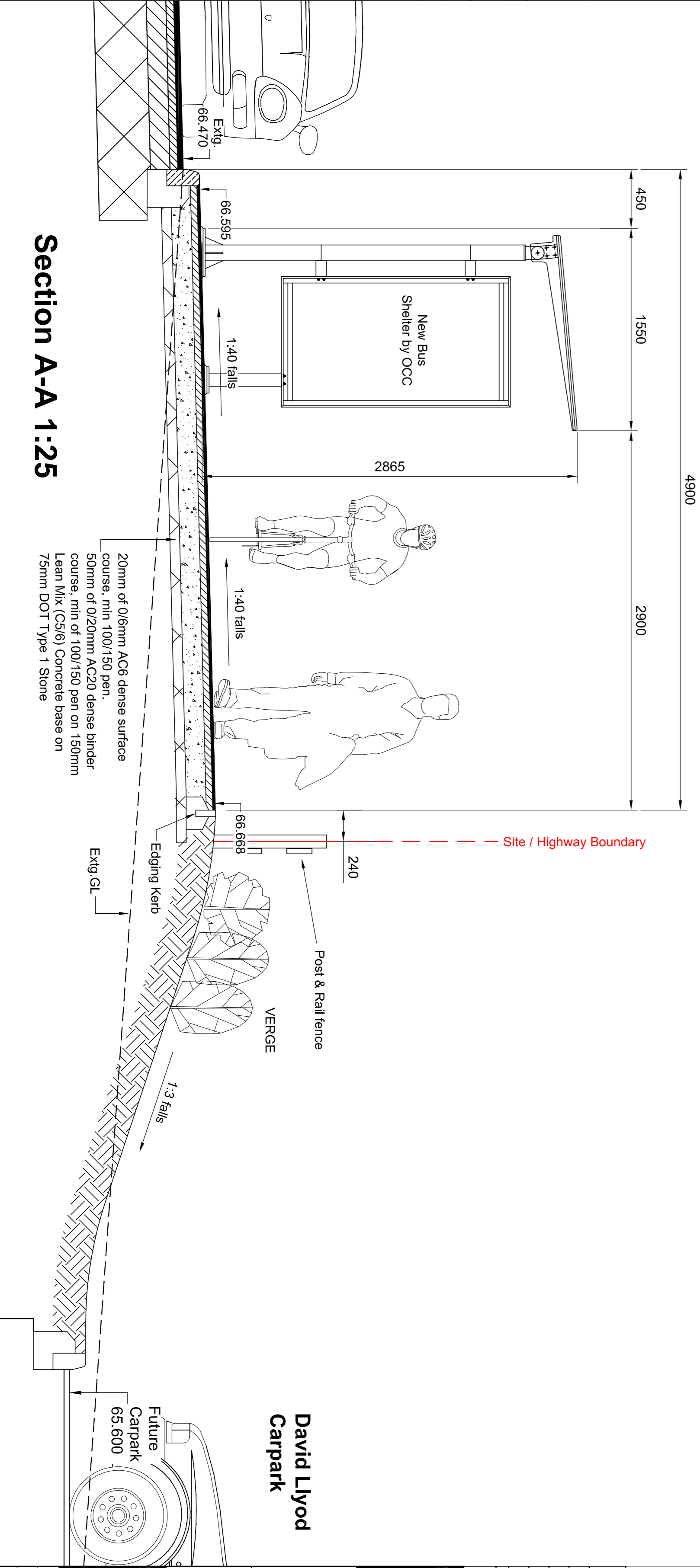
Catalyst Bicester
 Wendlebury Road

Albion Land Plc.

SECTION 278 WORKS
 BUS STOP DETAILS

BAILEY JOHNSON HAYES
 Consulting Engineers

STABINS Site 4 Phoenix House, 83 Campfield Rd, STABINS, Here AL1 5FL
 MANCHESTER: Garage House, John Dalton Street, MANCHESTER, M2 6FW
 Scale 1:100 @A1
 Date 24.03.20
 Drawn DJC
S1358-S278-12E



Section A-A 1:25

David Llyod
 Carpark

Future
 Carpark
 65.600