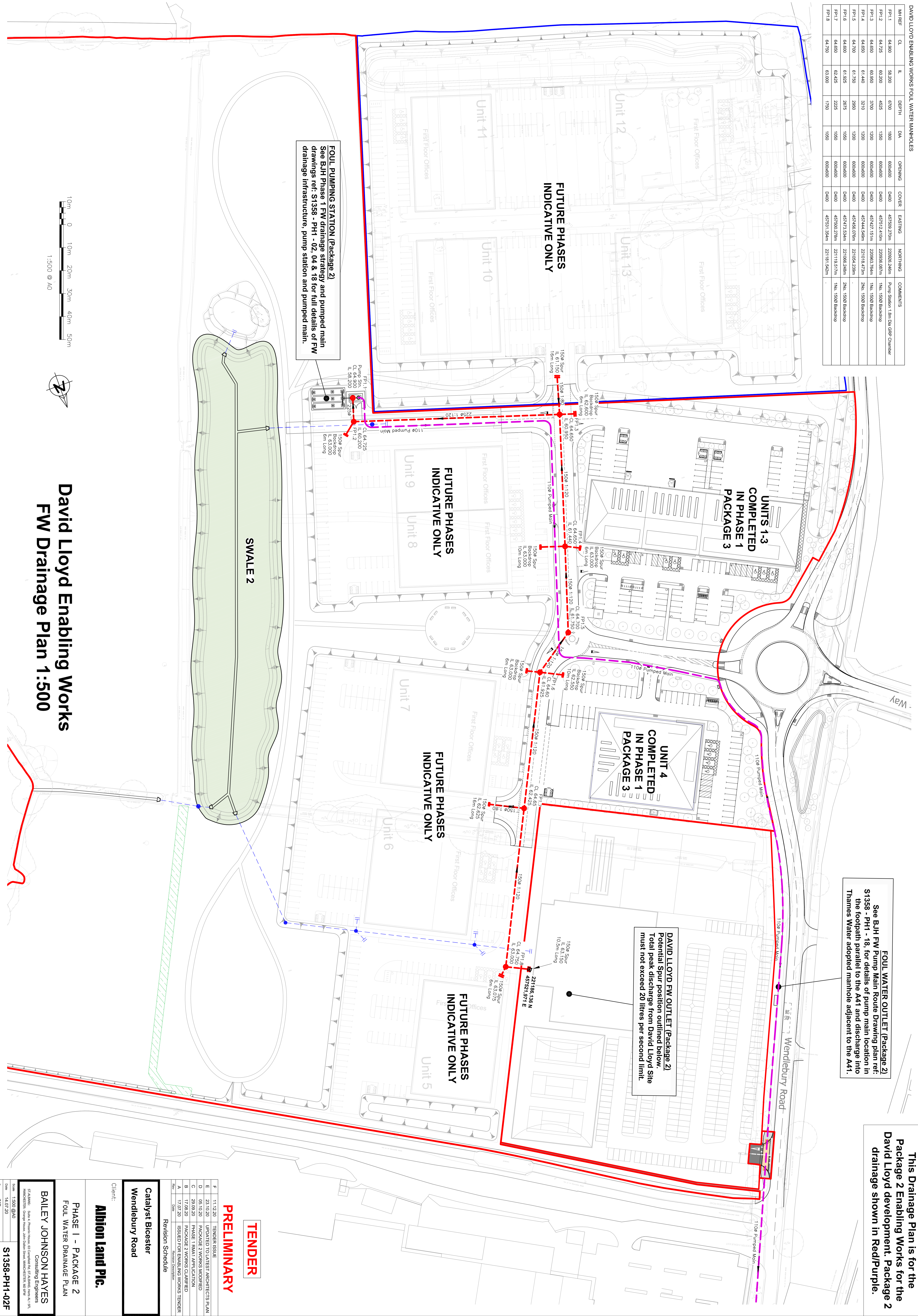


MANHOLE	CL.	LL	DEPTH	Ø/IN	COVER	EASTING	NORTHING	COMMENTS
PH1.1	64.900	58.200	6700	1800	D400	497500.270m	220262.246m	Pump Station 1.8m Dia GPP Chamber
PH1.2	64.725	60.200	4525	1350	D400	457472.410m	220262.087m	1No. 1500 Backdrop
PH1.3	64.650	60.950	3700	1200	D400	457427.151m	220263.794m	1No. 1500 Backdrop
PH1.4	64.650	61.440	3210	1200	D400	457444.549m	221118.472m	2No. 1500 Backdrop
PH1.5	64.700	61.750	2590	1200	D400	457456.076m	221154.239m	2No. 1500 Backdrop
PH1.6	64.600	61.925	2675	1050	D400	457473.534m	221106.248m	2No. 1500 Backdrop
PH1.7	64.650	62.425	2225	1050	D400	457500.270m	221118.517m	1No. 1500 Backdrop
PH1.8	64.750	63.000	1750	1050	D400	457531.354m	221181.542m	1No. 1500 Backdrop



This Drainage Plan is for the Package 2 Enabling Works for the David Lloyd development. Package 2 drainage shown in Red/Purple.

**FOUL WATER OUTLET (Package 2)**  
See BJH FW Pump Main Route Drawing plan ref: S1358 - PH1 - 18, for details of pump main location in the footprint parallel to the A41 and discharge into Thames Water adopted manhole adjacent to the A41.

**DAVID LLOYD FW OUTLET (Package 2)**  
Potential spur position outlined below. Total peak discharge from David Lloyd Site must not exceed 20 litres per second limit.

**FOUL PUMPING STATION (Package 2)**  
See BJH Phase 1 FW drainage strategy and pumped main drawings ref: S1358 - PH1 - 02, 04 & 18 for full details of FW drainage infrastructure, pump station and pumped main.

# David Lloyd Enabling Works FW Drainage Plan 1:500

**TENDER**  
**PRELIMINARY**

**Catalyst Bicoaster**  
Wendlebury Road

**Client:**  
**Albion Land Plc.**

**PHASE 1 - PACKAGE 2**  
**FOUL WATER DRAINAGE PLAN**

**BAILEY JOHNSON HAYES**  
Consulting Engineers

57 ALDERSHOT ROAD, ALDERSHOT, HANTS, GU11 3LW  
HANTSHER: George Newell, John Doherty, Michael Lancaster, IAN FRY

Scale: 1:500 @ A0  
Date: 14.07.20  
Drawn: JNG

**S1358-PH1-02F**

NO.	DATE	REVISION
F	11.12.20	TENDER ISSUE
E	23.10.20	UPDATED TO LATEST ARCHITECTS PLAN
D	05.10.20	PACKAGE 2 WORKS MODIFIED
C	29.09.20	PACKAGE 1 RMA1 APPLICATION
B	17.08.20	PACKAGE 2 WORKS CLARIFIED
A	17.07.20	ISSUED FOR ENABLING WORKS TENDER

**Revision Schedule**