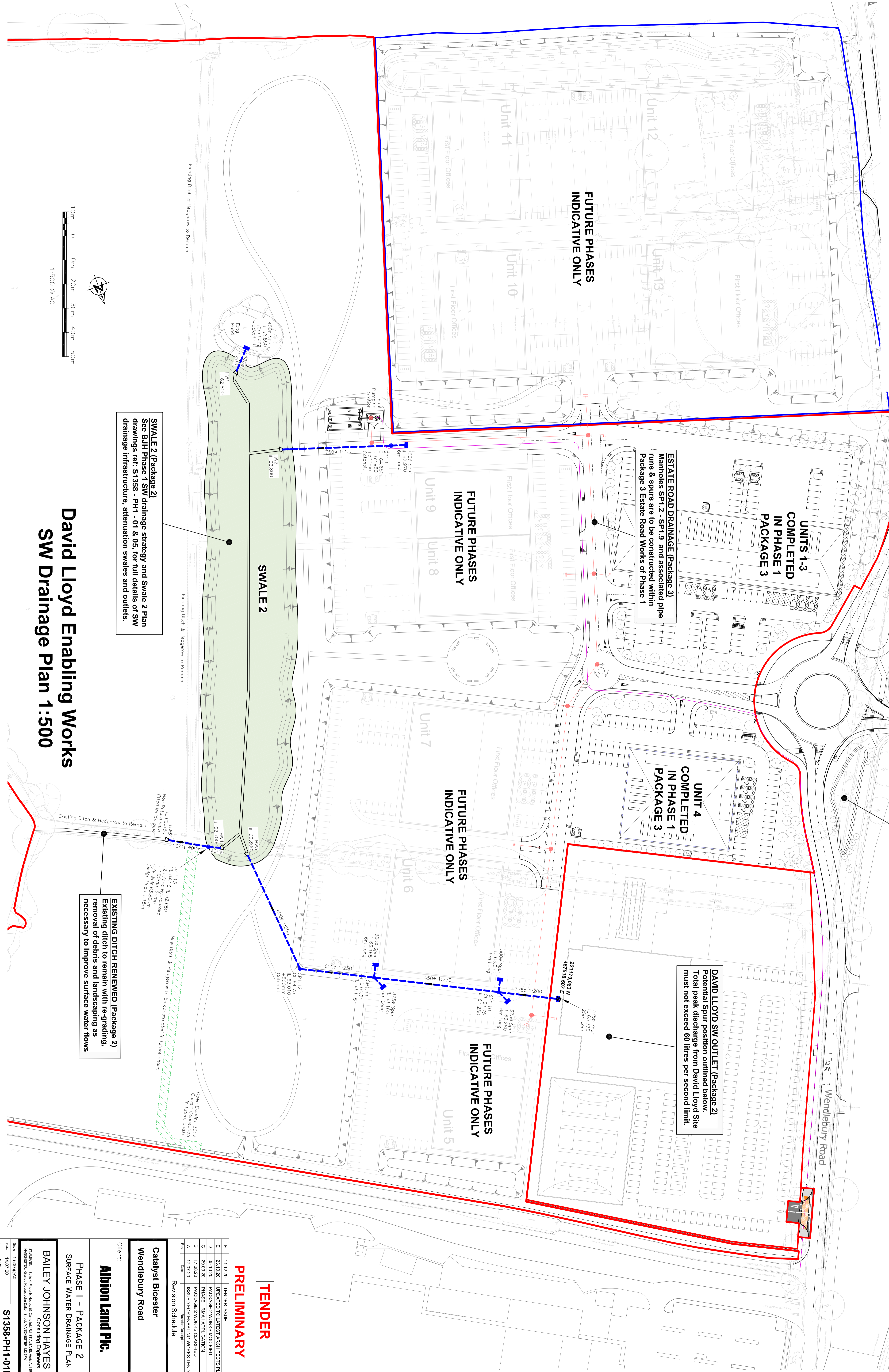


DAVID LLOYD ENABLING WORKS SURFACE WATER MANHOLES

MH REF	CL	IL	DEPTH	DIA	OPENING	COVER	EASTING	NORTHING	COMMENTS
SP1.1	64.680	62.480	2200	1500	600x600	D400	457925.268m	220961.956m	500mm Deep Catchpit Manhole
SP1.10	64.790	63.250	1500	1500	600x600	D400	457540.863m	221167.882m	
SP1.11	64.790	63.135	1615	1500	600x600	D400	457567.283m	221144.688m	
SP1.12	64.750	63.010	2240	1500	600x600	D400	457614.871m	221130.723m	500mm Deep Catchpit Manhole
SP1.13	64.750	62.500	2280	1800	600x600	D400	457833.189m	221070.219m	12 L/sec Hydrocraze filled to internal wall



**5278 DRAINAGE WORKS (Package 3)**  
For full details of the proposed drainage works within the 5278 Boundary refer to drawing ref: S1358-5278-05 Drainage Layout

**DAVID LLOYD SW OUTLET (Package 2)**  
Potential Spur position outlined below. Total peak discharge from David Lloyd Site must not exceed 60 litres per second limit.

This Drainage Plan is for the Package 2 Enabling Works for the David Lloyd development. Package 2 drainage shown in dark blue.

**SWALE 2 (Package 2)**  
See BUH Phase 1 SW drainage strategy and Swale 2 Plan drawings ref: S1358 - PH1 - 01 & 05, for full details of SW drainage infrastructure, attenuation swales and outlets.

**EXISTING DITCH RENEWED (Package 2)**  
Existing ditch to remain with re-grading, removal of debris and landscaping as necessary to improve surface water flows

# David Lloyd Enabling Works SW Drainage Plan 1:500

<b>TENDER</b>	
<b>PRELIMINARY</b>	
F	11.12.20 TENDER ISSUE
E	23.10.20 UPDATED TO LATEST ARCHITECTS PLAN
D	05.10.20 PACKAGE 2 WORKS MODIFIED
C	29.09.20 PHASE 1 RMAI APPLICATION
B	17.08.20 PACKAGE 2 WORKS CLARIFIED
A	17.07.20 ISSUED FOR ENABLING WORKS TENDER
Revision Schedule	
Catalyst Bicester	
Wendlebury Road	
Client: <b>Albion Land Plc.</b>	
PHASE 1 - PACKAGE 2	
SURFACE WATER DRAINAGE PLAN	
<b>BAILEY JOHNSON HAYES</b>	
Consulting Engineers	
57 ALBION ROAD, ALBION HOUSE, ALBION INDUSTRIAL PARK, ALBION	
MANCHESTER, GRANDE MEAD, JOHN DUNN STREET, MANCHESTER, M14 6JW	
Scale:	1:500 @ A0
Date:	14.07.20
Drawn:	JNG
Sheet:	<b>S1358-PH1-01F</b>