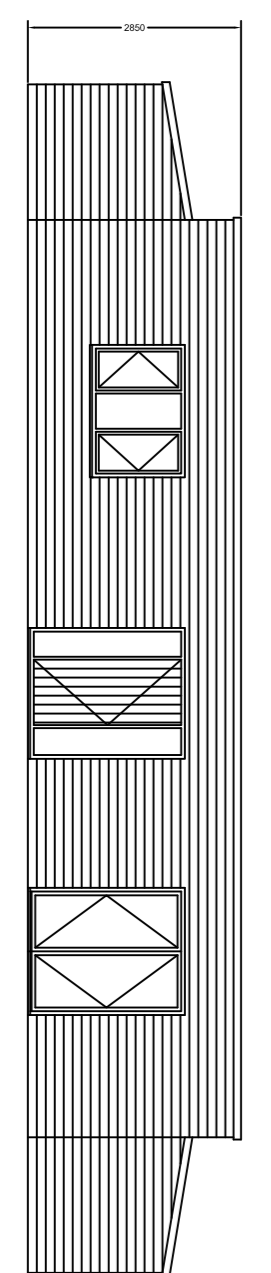
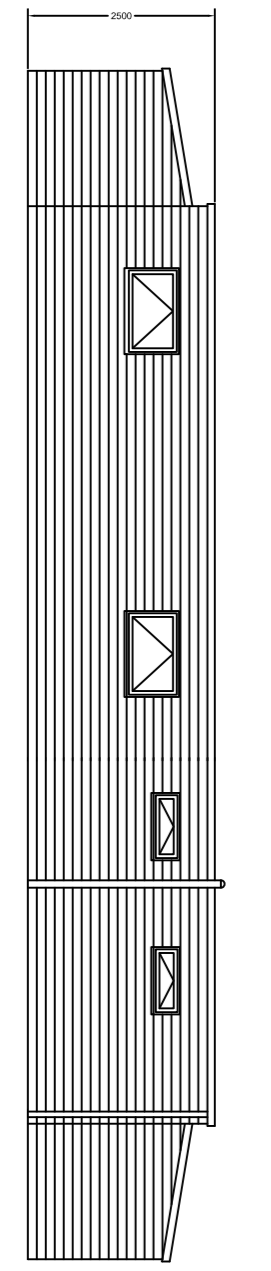


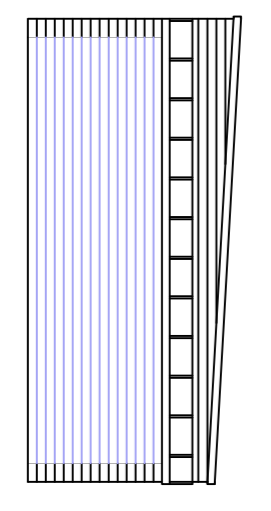
Side Elevation



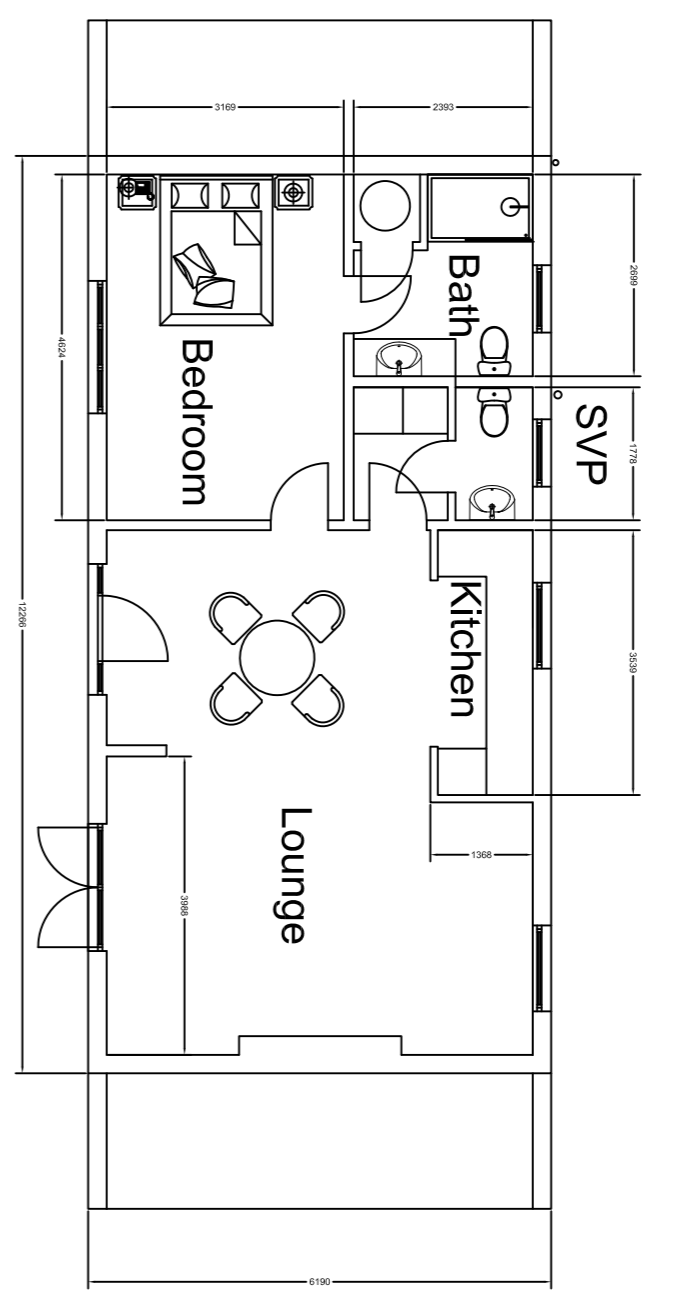
Front Elevation



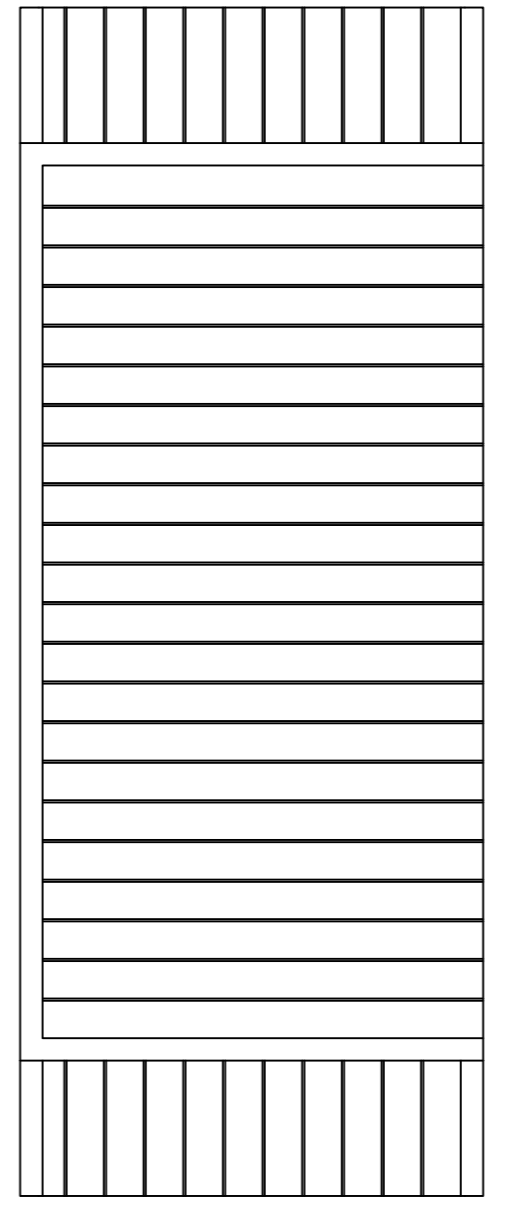
Rear Elevation



Side Elevation

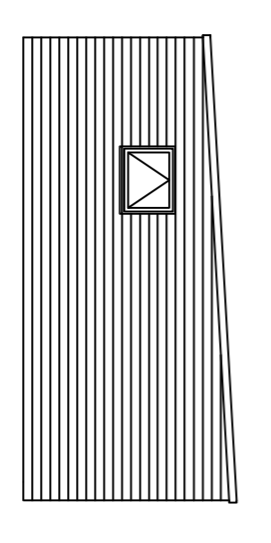


Ground Floor Plan

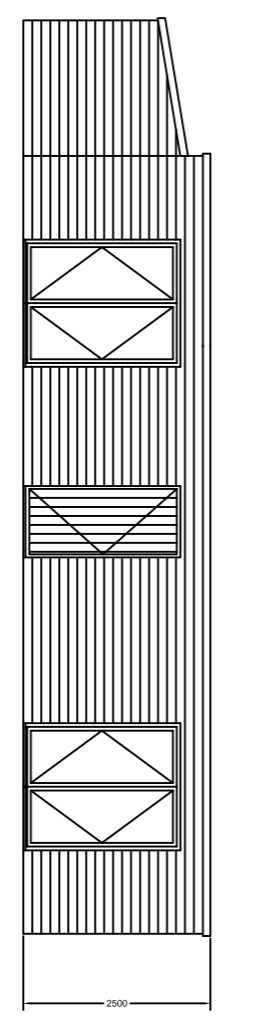


Roof Plan

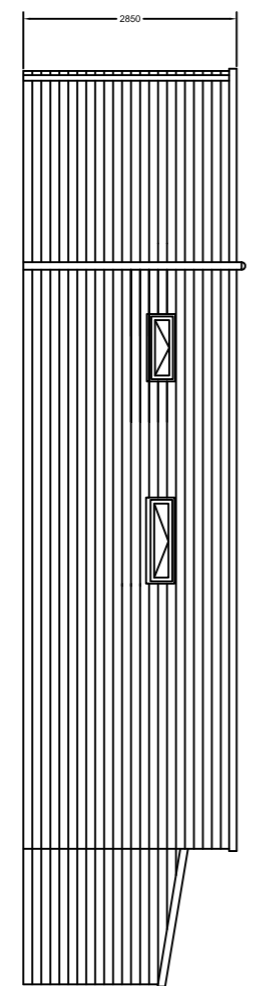
Cottage 1



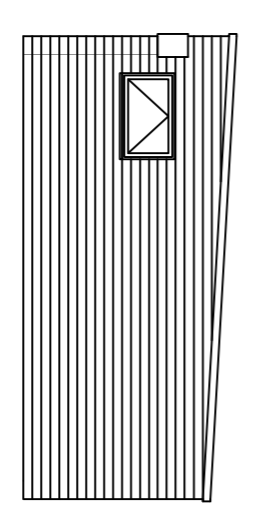
Side Elevation



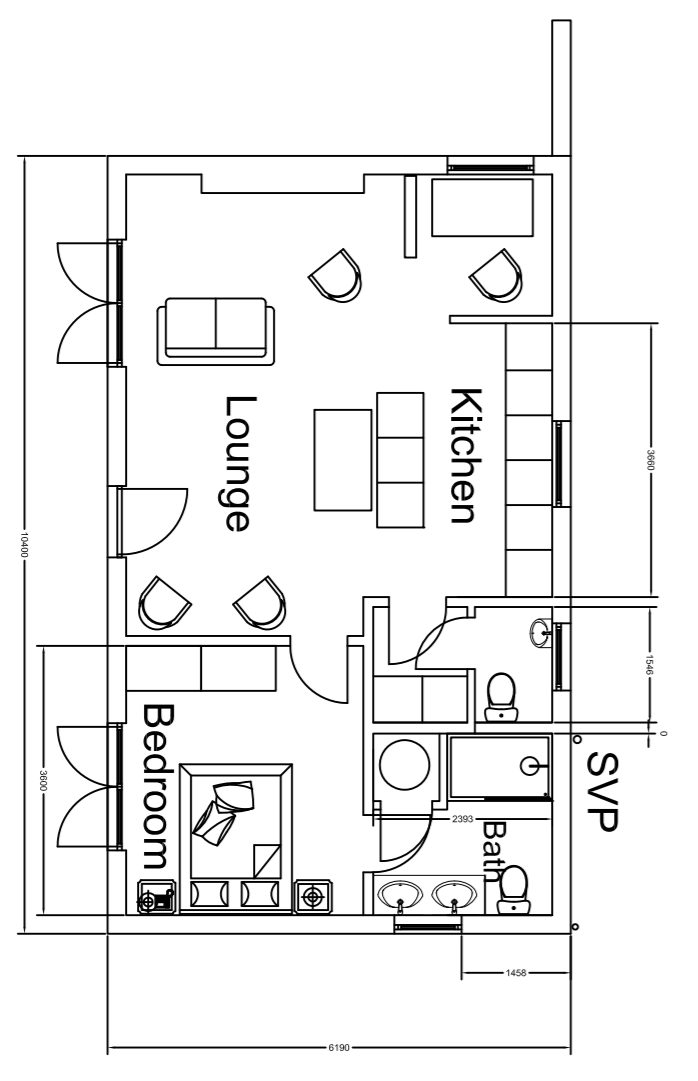
Front Elevation



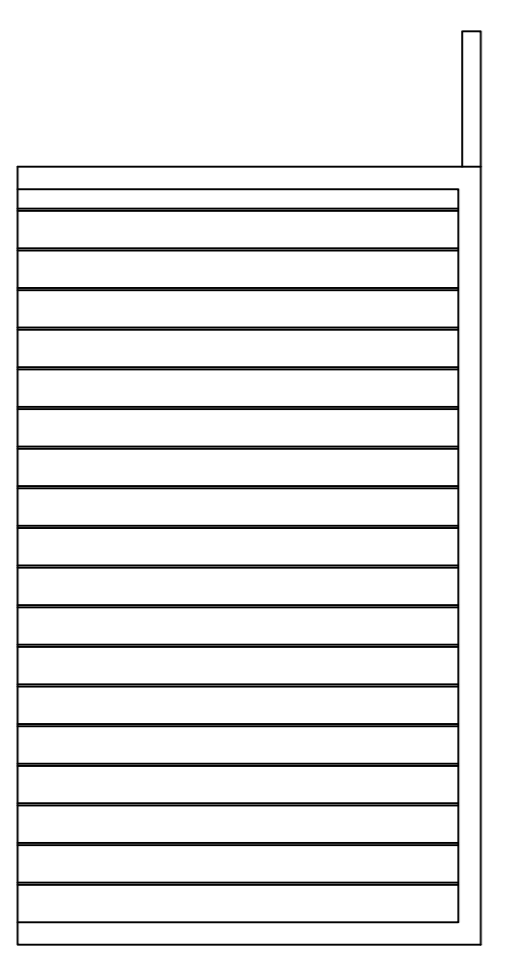
Rear Elevation



Side Elevation



Ground Floor Plan



Roof Plan

Cottage 2

Specification

The walls are built up of :-

- External 15mm shiplap pine boarding laid horizontally onto timber studs
- The existing steel frame is supplemented with 100 x 50mm timber studs with 100mm mineral wool insulation.
- 75mm cavity filled with mineral wool insulation
- 100mm internal block walls with dot and dab plaster finish

Windows

White PVCu double glazed windows and doors.

Roof

PVDF coil coated steel profiled sheeting onto the steel frame with mineral wool insulation
 Timber rafters with 12.5mm plaster ceiling boards

Floor

Concrete slab with damp proof membrane and slab insulation
 18mm chipboard flooring planks with 18mm engineered oak floor finish