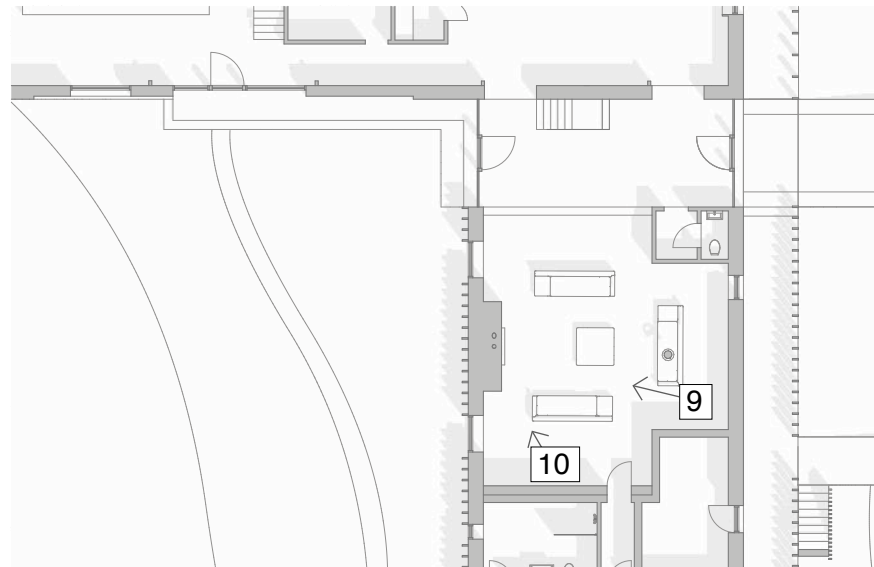




View 9 (left)
The Drawing Room is located off the double-height entrance, and looks out over the lake

View 10 (below)
This is the first view, through the window, of Virginia's wing projecting out over the water

location of views

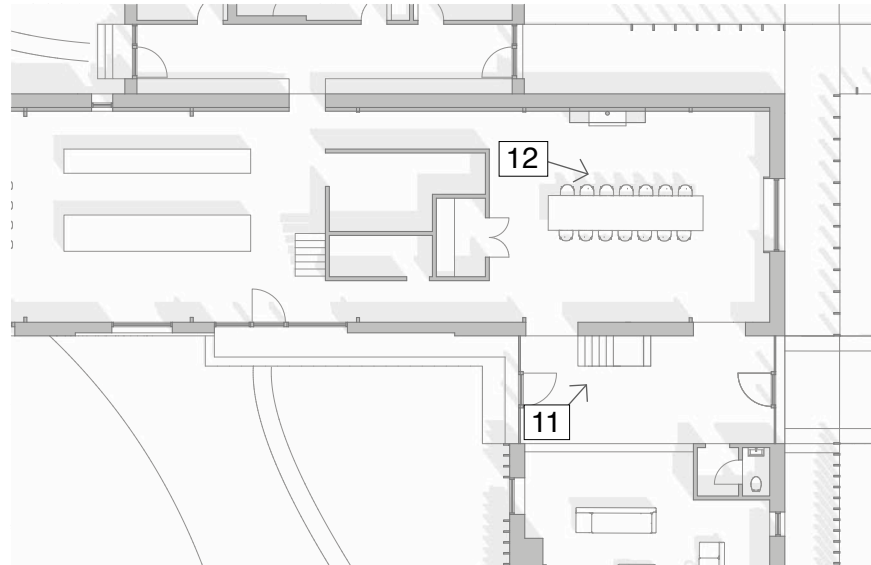


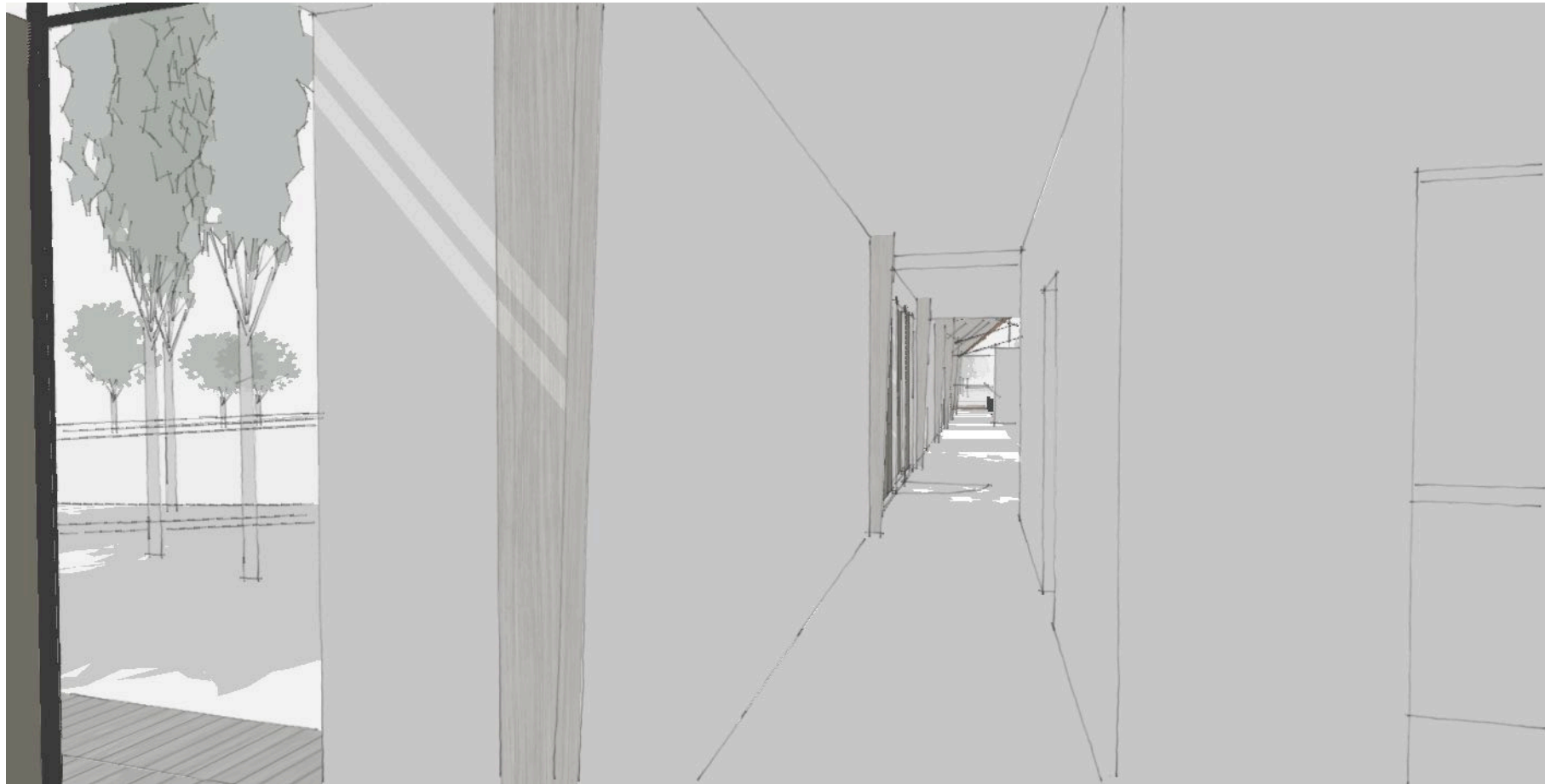


View 11 (left)
Looking back towards the entrance, the glazing frames a view of the large mature oak trees beyond

View 12 (below)
From the dining room, the oak trees are again framed with a picture window, and the space feels generous because of its connection back to the entrance hall and drawing room beyond

location of views

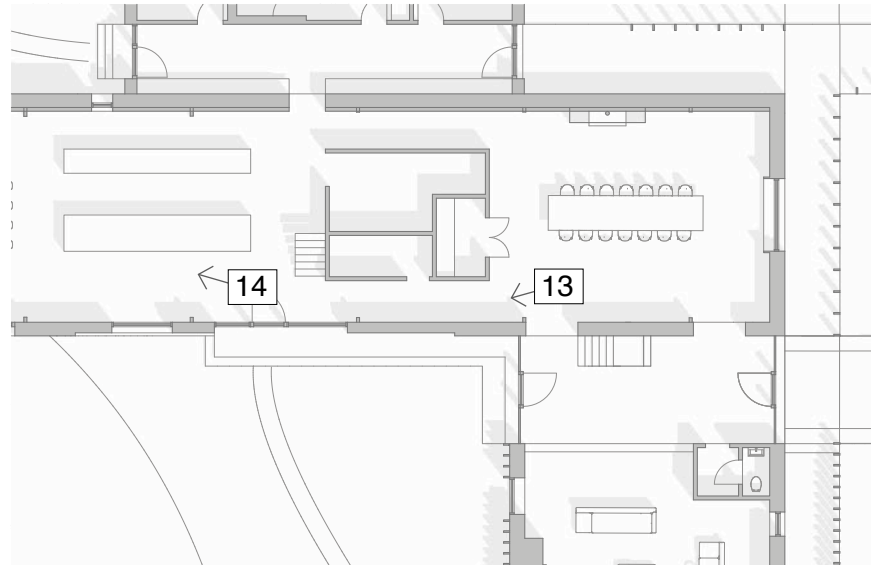




View 13 (left)
Looking away from the dining room, you get the first sense of the drama that is beginning to unfurl

View 14 (below)
You are drawn into the kitchen and begin to appreciate the dynamic space and the fact that it is surrounded by water

location of views

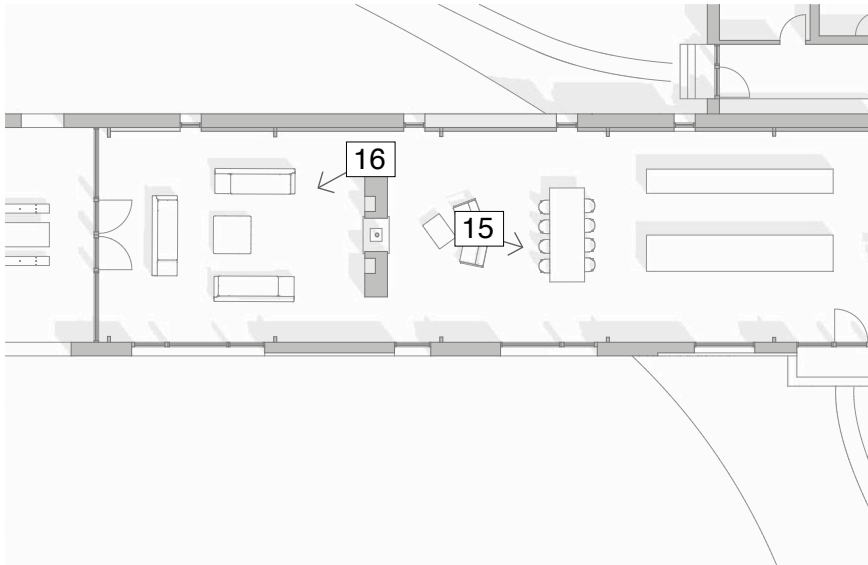


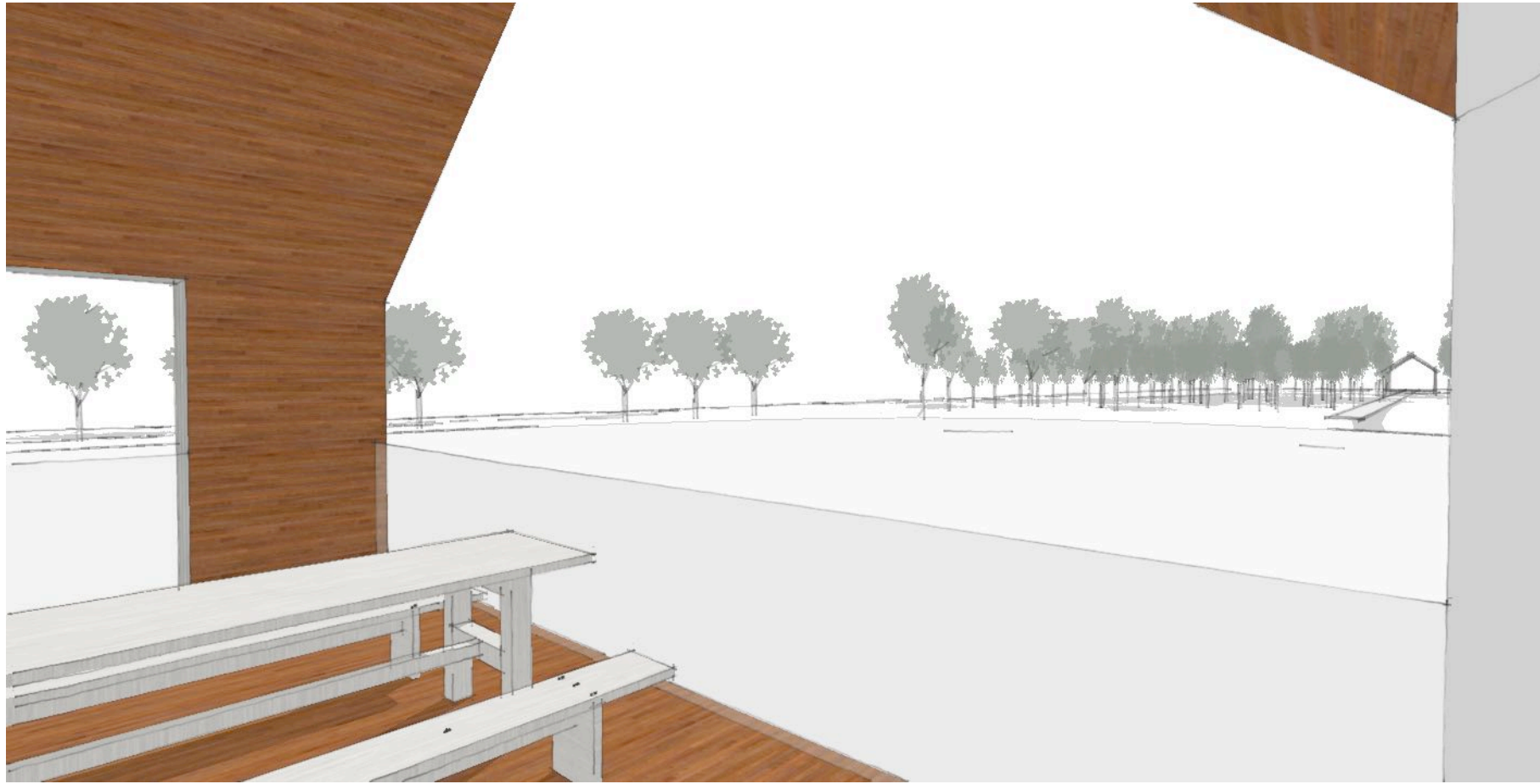


View 15 (left)
Looking back towards the kitchen, with its mezzanine study over

View 16 (below)
As you progress along, drawn towards the end of the dynamic sloping roof, you see a folly in the distance, and it becomes apparent that you are not just looking out at the water, but are actually floating over it.

location of views





View 17 (left)
An outside covered seating area at the end of the projecting wing enjoys total immersion in the setting of the lake and the landscape beyond

View 18 (below)
Looking back, the sitting room has an intimate feel, whilst still feeling part of the larger space, and indeed the landscape

location of views

