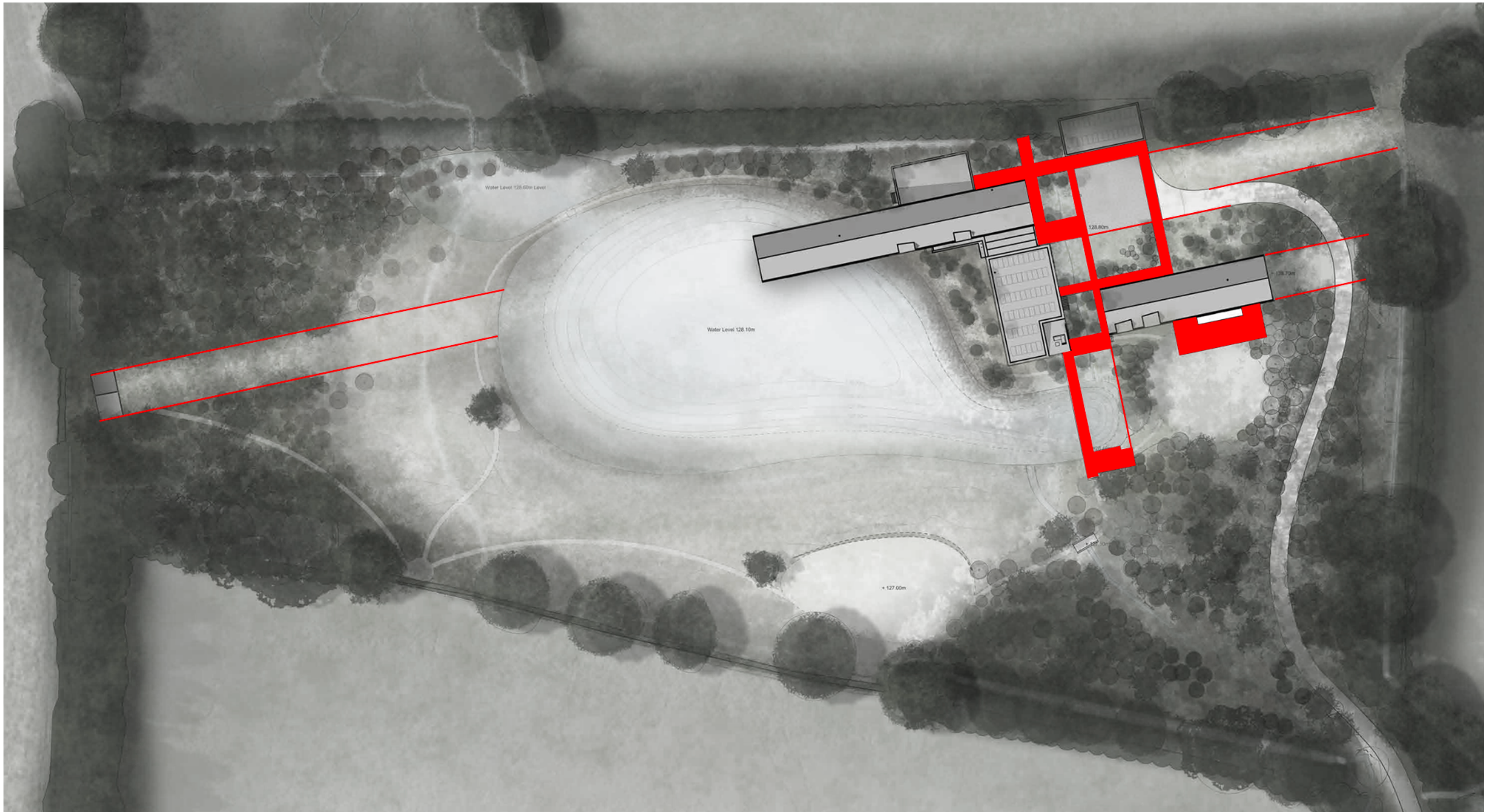
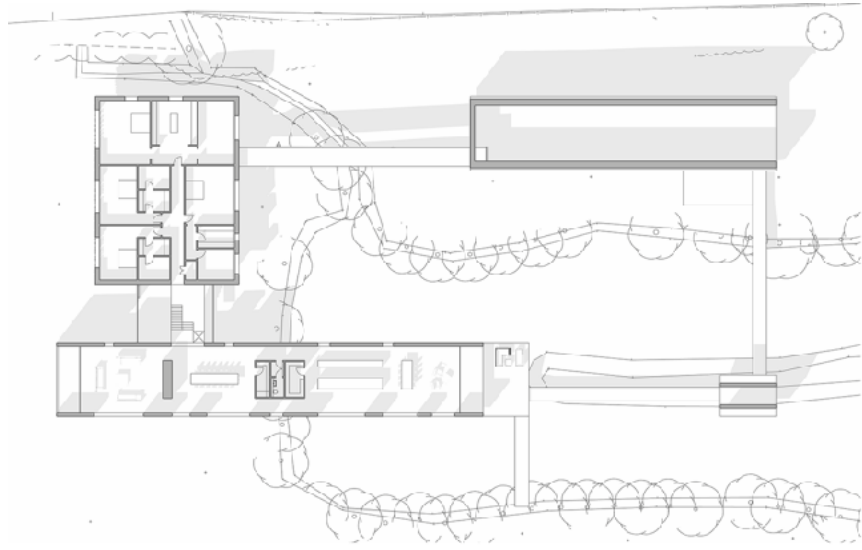


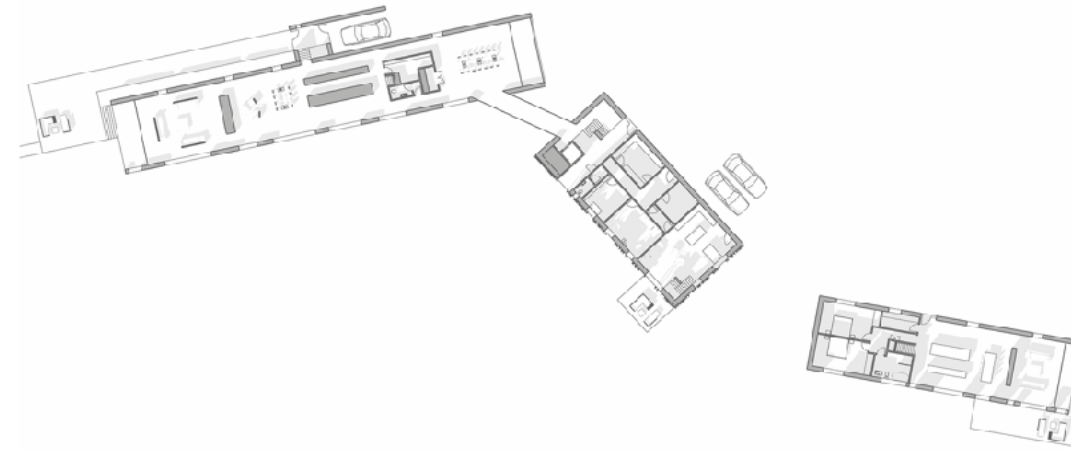


Going back to the walkways, they also create strong axes, which draw you out into and connect to the wider landscape

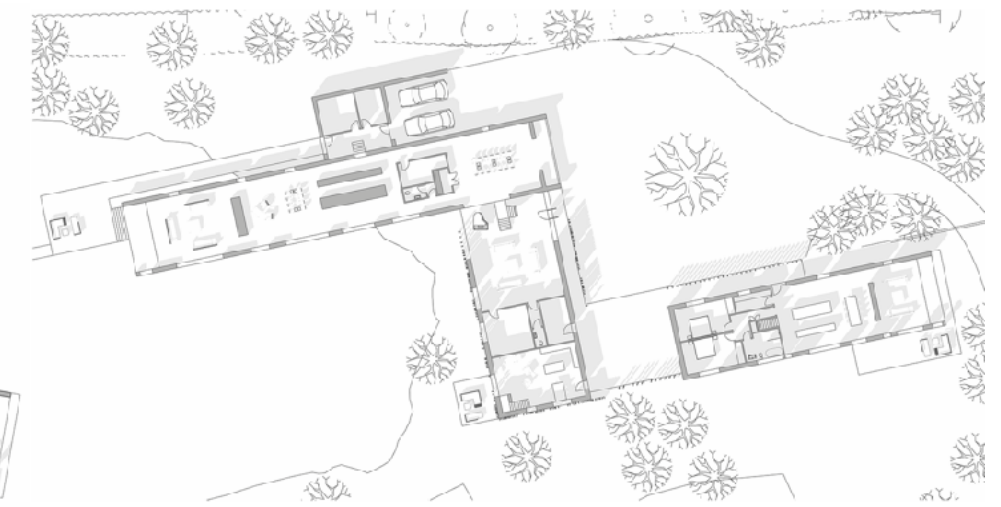




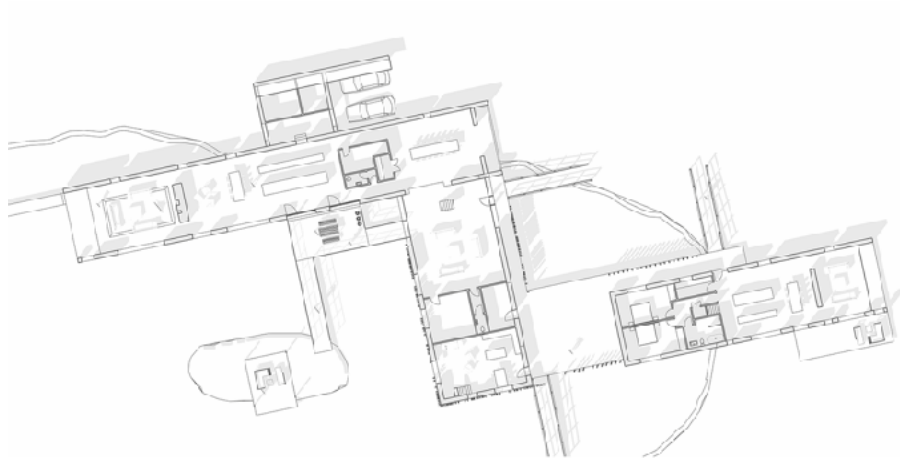
1 - The earliest iterations had the building to the north and east of the existing lake, and spanning over to the island



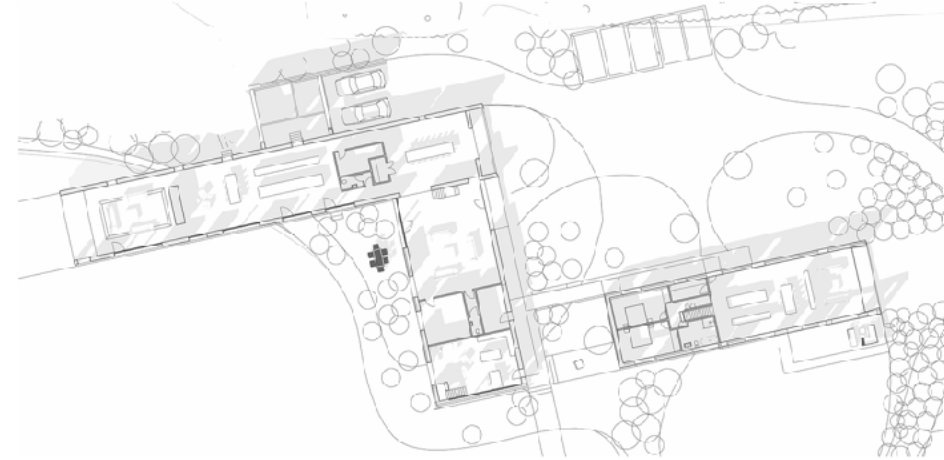
2 - Once it was concluded that the shape of the water could change, this was one of many iterations exploring how the different volumes might relate to each other and to the site



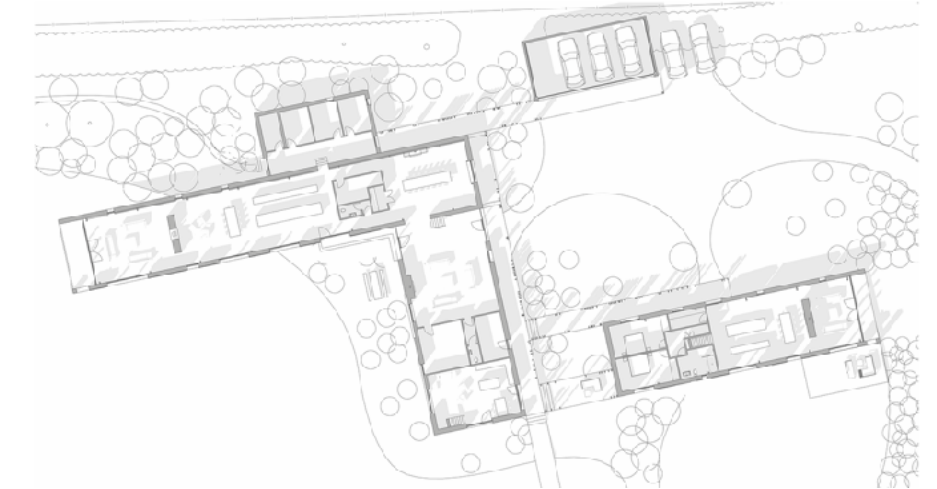
3 - It became apparent that the best option was to have the three parts more closely related to each other, creating one building rather than three.



4 - Various options for the shape of the water were tested - this one looking at most of the building spanning over it - but we concluded this would result in poor water quality and would be far too busy with all of the guarding required, and mean the spaces didn't feel connected enough to the outside.



5 - Almost the current version, with the water wrapping around the south side of the building and starting to work on the detail of how the inside and outside spaces related to each other.



6 - The version presented to the Nov '19 DRP, having worked more on the connecting walkways, parking arrangement and enlarged the utility area to the north.



PHOTOGRAPHS OF MODEL
Presented to first Design Review Panel
November 2019

The most significant change between this version and the next was the design of the central section, which as shown here had been conceived as a traditional barn form - the starting point for the more quirky forms of the wings.

Although the panel were broadly very supportive, they found the central part to be the least successful element of the design.

