



Oxpens, Wigginton
3d STUDIES

Drawing no. **117-V-01**

not to scale @ A3
Date: June 2020

Seymour-Smith Architects
www.seymoursmith.co.uk

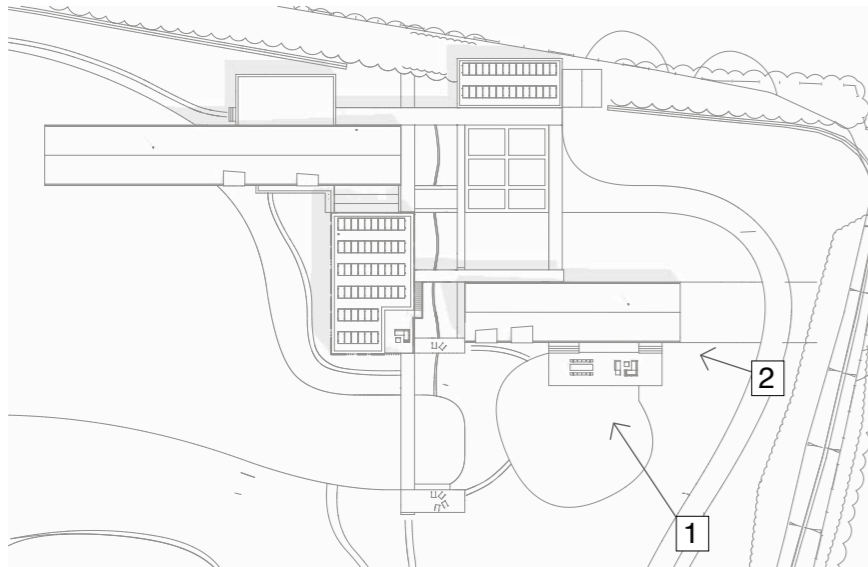
copyright Seymour-Smith Architects



View 1 (left)
As you approach along the driveway, the first glimpse of the house through the trees is of Emma's wing

View 2 (below)
Glancing to the left while passing through the clearing in the trees affords the view of Emma's gable end hovering above the ground - a striking motif of what's to come

location of views





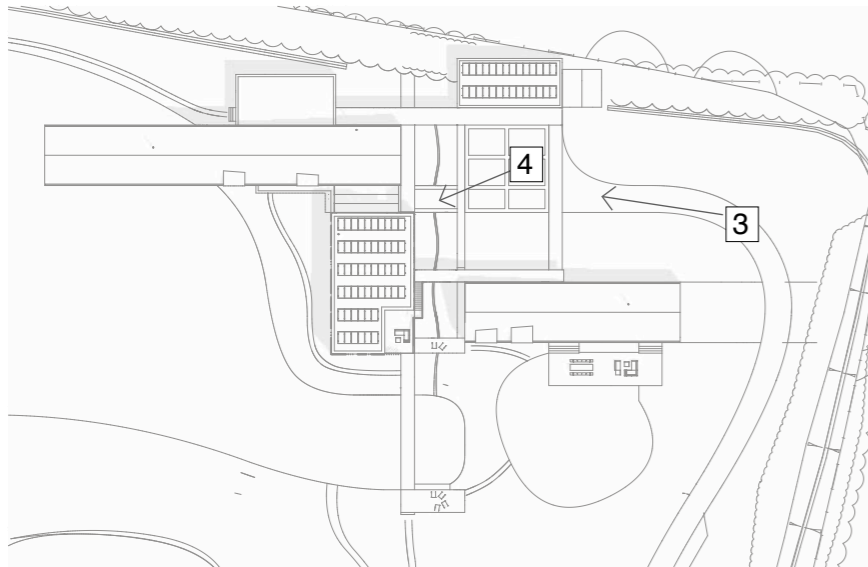
View 3 (left)

Following the driveway around, you enter the woodland courtyard, and for the first time appreciate the three main volumes as well as the cloister-like walkways and the garage to the right, enclosing the courtyard

View 4 (below)

Approaching the main entrance takes you over a bridge which crosses a rill, snaking down towards the lake

location of views





View 5 (left)

Following the line of the rill to the left, your eye is drawn through the birch grove to the lake beyond and the boardwalk crossing it into the distant landscape

View 6 (below)

It is only as you approach the front door that you glimpse for the first time the body of water beyond and the dramatic double-height space and cantilevered staircase

location of views





View 7 (left)

As you enter the glazed double-height central space, you are immediately drawn towards the water and trees beyond

View 8 (below)

Looking out, you begin to appreciate how expansive and dramatic the water is, as well as having glimpses of the wider landscape between gaps in the boundary trees

location of views

