

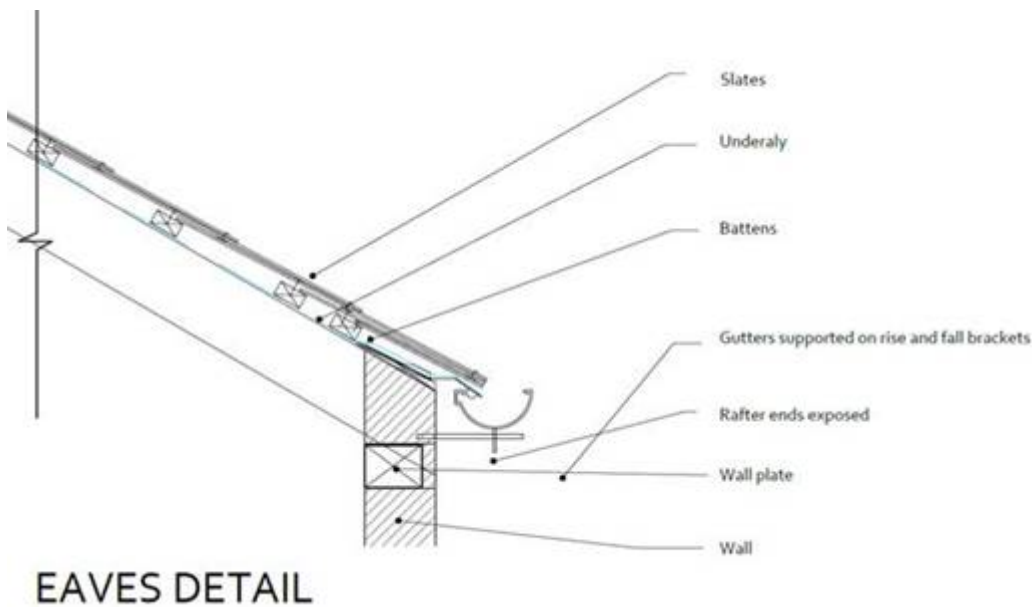
Lynne Baldwin

From: Gemma Magnuson
Sent: 05 November 2020 11:54
To: DC Support
Subject: FW: Applications: 20/00947/F & 20/00948/LB Temple Mill, Sibford Ferris

From: Joyce Christie <Joyce.Christie@Cherwell-DC.gov.uk>
Sent: 04 November 2020 11:41
To: Gemma Magnuson <Gemma.Magnuson@cherwell-dc.gov.uk>
Subject: RE: Applications: 20/00947/F & 20/00948/LB Temple Mill, Sibford Ferris

Hi Gemma

I have made the following comments:



Eaves detail:

Note says rafter ends exposed but the drawn detail shows a traditional eaves which is preferred. We need confirmation.

Not sure the wall plate position or height/slither of masonry is quite how it will be built.

Slate sample to match:

We need a sample/ and technical literature if new slate is being used.

Rainwater goods:

The application confirms these will be cast iron.

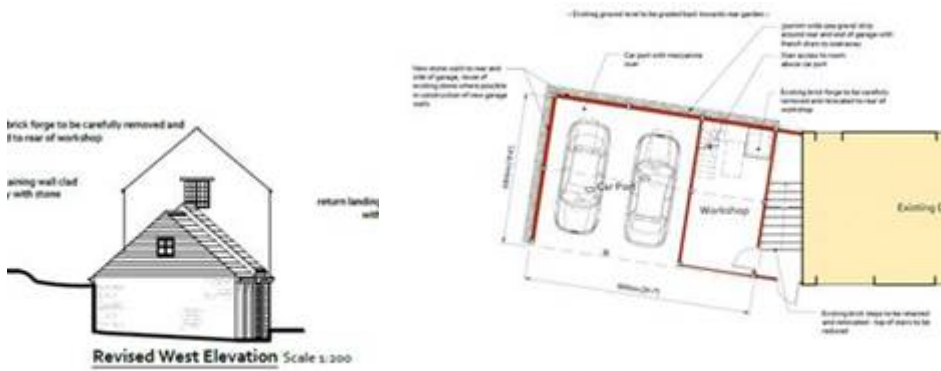


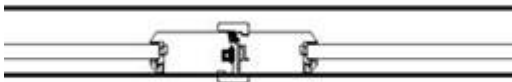
Photo 10: site proposal site plan showing the area of gravel drainage around the rear and side of the gara



Drainage to the retaining wall/run off the D+A Statement mentions a 300 wide pea gravel strip with French Drain.
 Q. How will the land be retained between the gable and the road the elevation suggests a wall but currently the land is graded down?

Joinery details:

I expect the joiner will introduce a drip to the cill of the window above the timber cladding/ensure a robust detail where the timber cladding protects the head of the door etc.



Non-traditional cover strip on the garage door is shown on plan but not on the elevation:
 The drawing note suggests it could be applied on the inside – this would be preferable to having it on the outside/for additional protection it may also be possible to lap the meeting stiles of the door (as would be done on a traditional timber window casement without a mullion).

Rooflights:

Q. Please check they are using a 'between the rafter' detail rather than 'on top of rafter' detail. Please check the size (I can't find the size in the catalogue) and confirm the rooflight reference number/and if it is hinged at the top.

Masonry panel:

We need a new masonry panel taking on board comments made on the first panel.

'The stone will be a solid wall backed with block, rather than a cavity wall, and this is more suited to the stone they will be reusing/making up with local stone from the original source.
 The stone is acceptable.
 The colour of the mortar in the top of the sample is acceptable but it is quite hard, I asked them to tighten the perpend and bed joints where possible given the nature of the stone, to have quite a full joint where the arris can just be seen (the bottom of the sample has a fuller joint) and to build a few courses on top of the existing sample in an NHL 3.5 mortar, I said the normal mix proportions are roughly 1 part lime to 3 parts sand (the sand could be 2 parts well-graded sharp sand and 1 part building sand), he said he an account with Nichols and could get a bag. I asked him to call me once it had been built.

The aggregate in the mortar can be exposed once the initial set has taken place – by tamping the mortar with a stiff churn brush, this will also remove any surface laitance.’ 18/00341/DISC



Recording Condition:

The forge and steps prior to rebuilding - the D+A Statement says to follow?

Best wishes

Joyce Christie

Conservation Officer

Planning Policy, Conservation and Design

Place and Growth Directorate

Cherwell District Council

Direct Dial 01295 221608

joyce.christie@cherwell-dc.gov.uk

www.cherwell.gov.uk

Follow us on Facebook www.facebook.com/cherwelldistrictcouncil

Follow us on Twitter @cherwellcouncil

Coronavirus (COVID-19): In response to the latest Government guidance and until further notice, the Planning Service has been set up to work remotely, from home. Customers are asked not to come to Bodicote House but instead to phone the Planning Policy, Conservation and Design Team on 01295 227985 or email design.conservation@cherwell-dc.gov.uk. For the latest information about how the Planning Service is impacted by COVID-19, please check the website: www.cherwell.gov.uk

This e-mail (including any attachments) may be confidential and may contain legally privileged information. You should not disclose its contents to any other person. If you are not the intended recipient, please notify the sender immediately.

Whilst the Council has taken every reasonable precaution to minimise the risk of computer software viruses, it cannot accept liability for any damage which you may sustain as a result of such viruses. You should carry out your own virus checks before opening the e-mail(and/or any attachments).

Unless expressly stated otherwise, the contents of this e-mail represent only the views of the sender and does not impose any legal obligation upon the Council or commit the Council to any course of action..