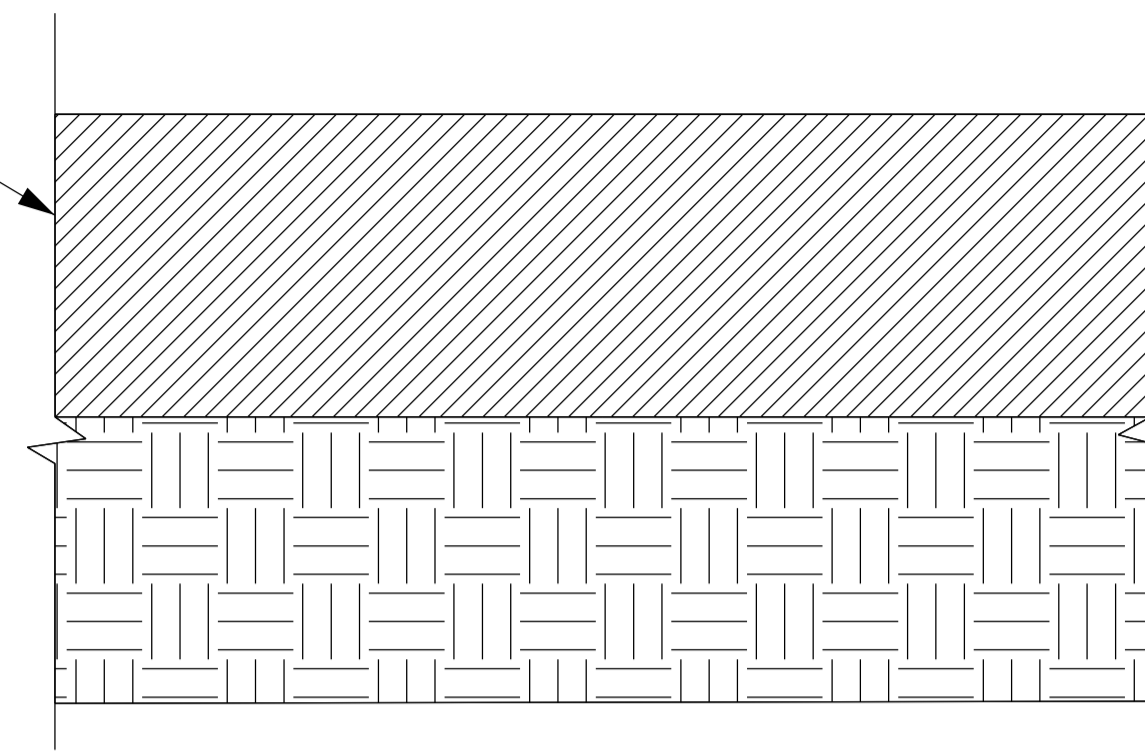


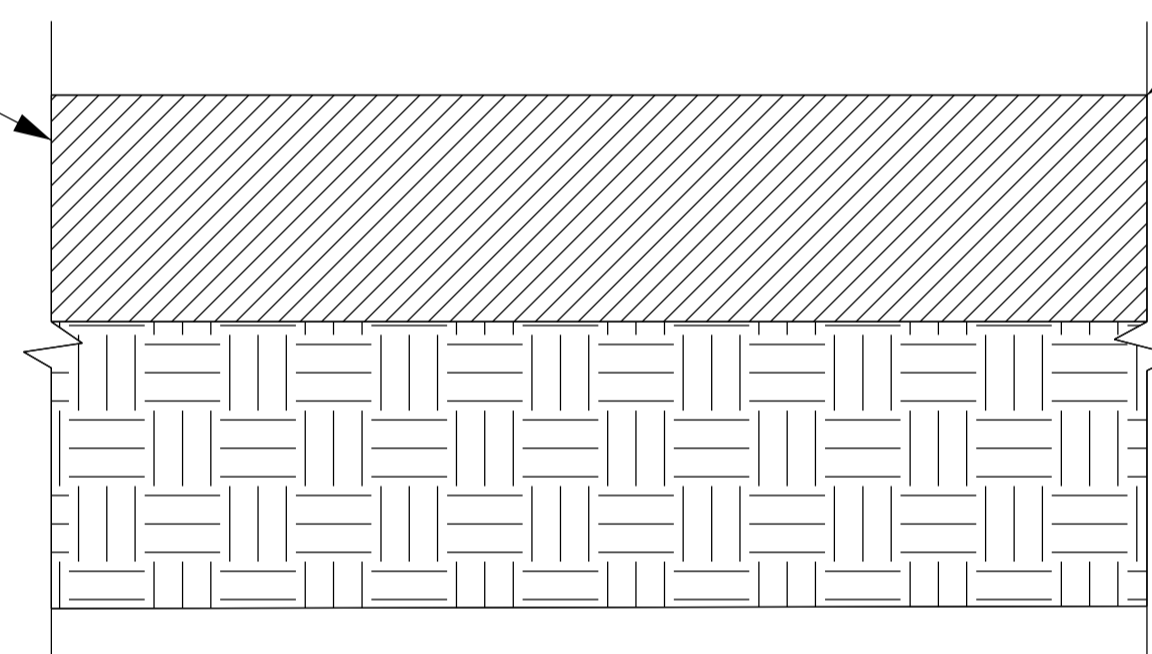
FOOTPATH SURFACE TO BE ROTAVATED TO A DEPTH OF 200mm



EXTINGUISHED FOOTPATH TO BE SEEDED WITH GENERAL GRASS SEED WHERE APPLICABLE

FOOTPATH TO BE EXTINGUISHED

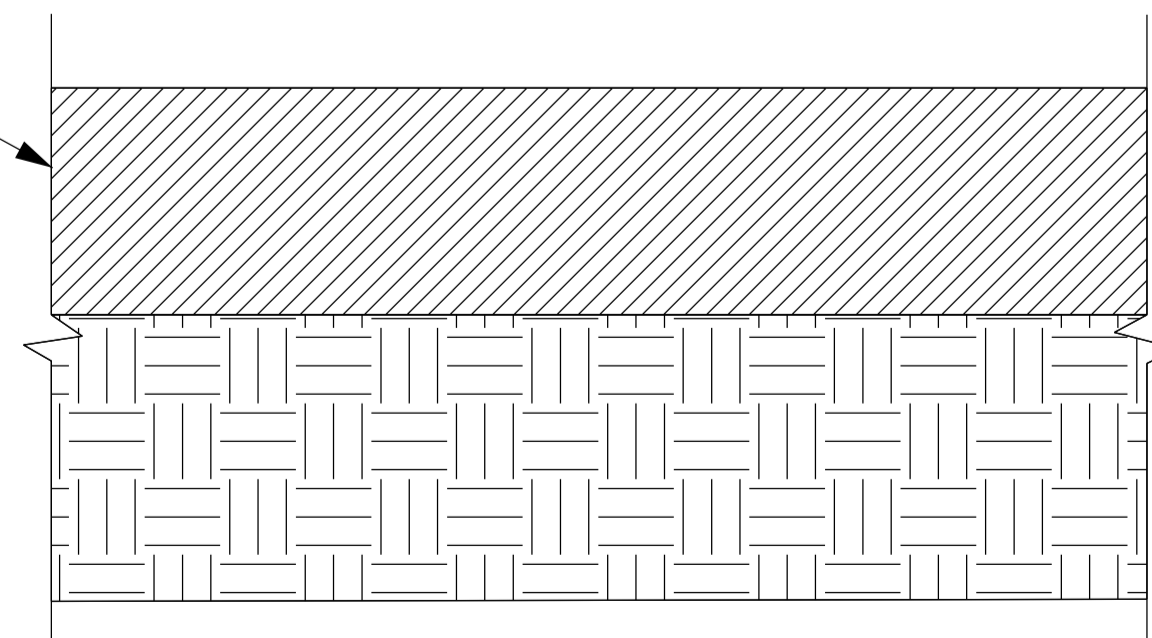
NEW FOOTPATH TO BE ROTAVATED TO A DEPT OF 150mm AND THEN COMPACTED WITH NO VIBRATIONS



FOOTPATH TO BE SEEDED WITH GENERAL GRASS SEED WHERE APPLICABLE

NEW UNSURFACED FOOTPATH

NEW FOOTPATH TO BE ROTAVATED TO A DEPT OF 150mm AND THEN COMPACTED



NEW FOOTPATH

NETWORK RAIL (EAST WEST  
RAIL WESTERN SECTION PHASE 2)

1. ALL DIMENSIONS ARE IN MILLIMETRES  
UNLESS STATED OTHERWISE.



Rev	Date	Description of Revisions	Dsnd	Chkd	Appr
B01	17/01/20		--	--	--
Status					Appr Suitability



Project  
East West Rail  
(Western Section)  
Phase 2

Drawing Title  
STANDARD CONSTRUCTION DETAIL  
PRoW FOOTWAY CONSTRUCTION

Designed	---	Signed	---	Date	---
Drawn	Tamsin Leaman-Hewitt	Signed	T. Leaman-Hewitt	Date	17/10/19
Checked	---	Signed	---	Date	---
Approved	---	Signed	---	Date	---

Scale(s)  
1:5

ELR - Project Chainage (Miles Yards)  
XX -

Design Package Risk Classification  
Normal

Sheet  
1 of 1

Alternative Reference

Revision  
P01

Drawing Number  
133735\_RW-EWR-XX-XX-DR-CH-000222